

Medical Office for Lease

13055/13065 W McDowell Road · Avondale, AZ 85392



ZDI
REALTY ADVISORS



Matthew Kostrivas

Associate

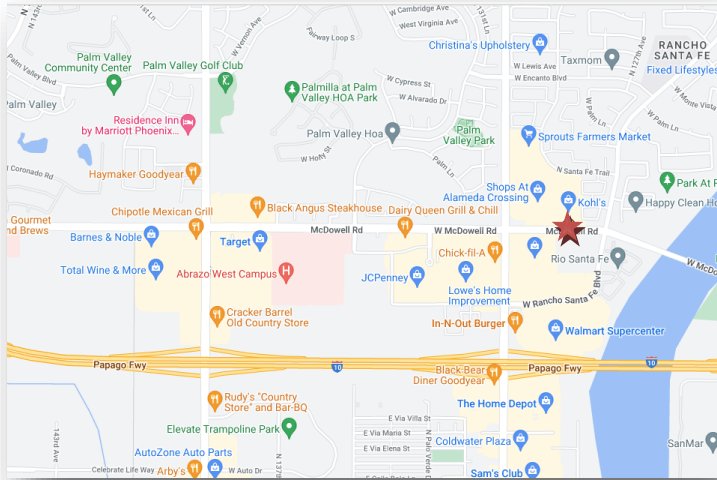
480-980-1869

matt@zrallc.net

7337 E. Doubletree Ranch Rd. Suite C 288 Scottsdale, AZ 85258
O. 480.248.8717 • F. 480.483.1792 • www.zdirealtyadvisors.com

Medical Office for Lease

13055/13065 W McDowell Road · Avondale, AZ 85392



±1,284 RSF

Suite E-103

·Shell Space

±3,313 RSF

Suite G-110/112

·Built-out Medical

·Conveniently located near I-10 and Abrazo West Campus



ZDI
REALTY ADVISORS



Matthew Kostrivas

Associate

480-980-1869

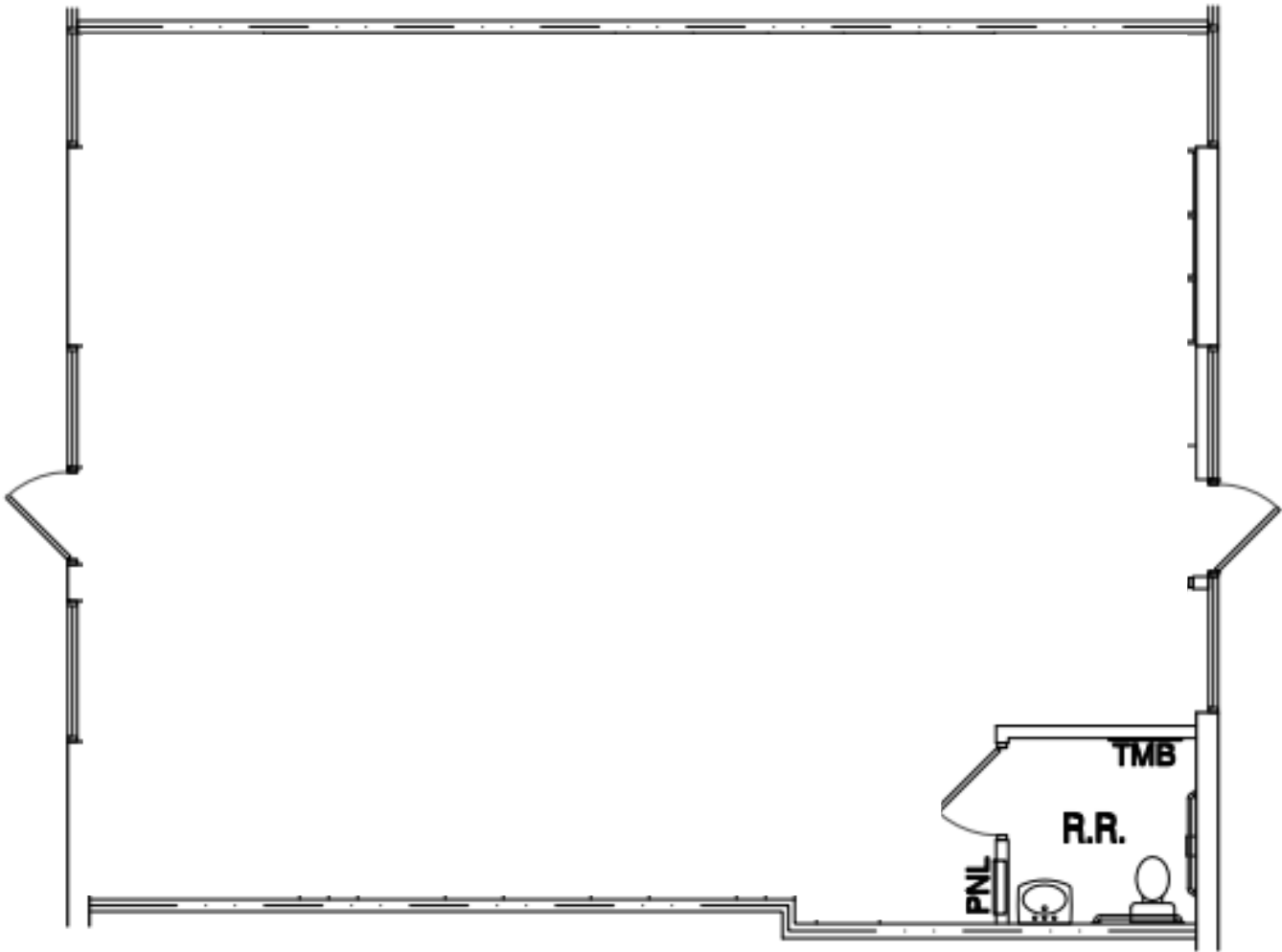
matt@zrallc.net

7337 E. Doubletree Ranch Rd. Suite C 288 Scottsdale, AZ 85258
O. 480.248.8717 • F. 480.483.1792 • www.zdirealtyadvisors.com

Medical Office for Lease

13055/13065 W McDowell Road · Avondale, AZ 85392

E-103



ZDI
REALTY ADVISORS



Matthew Kostrivas

Associate

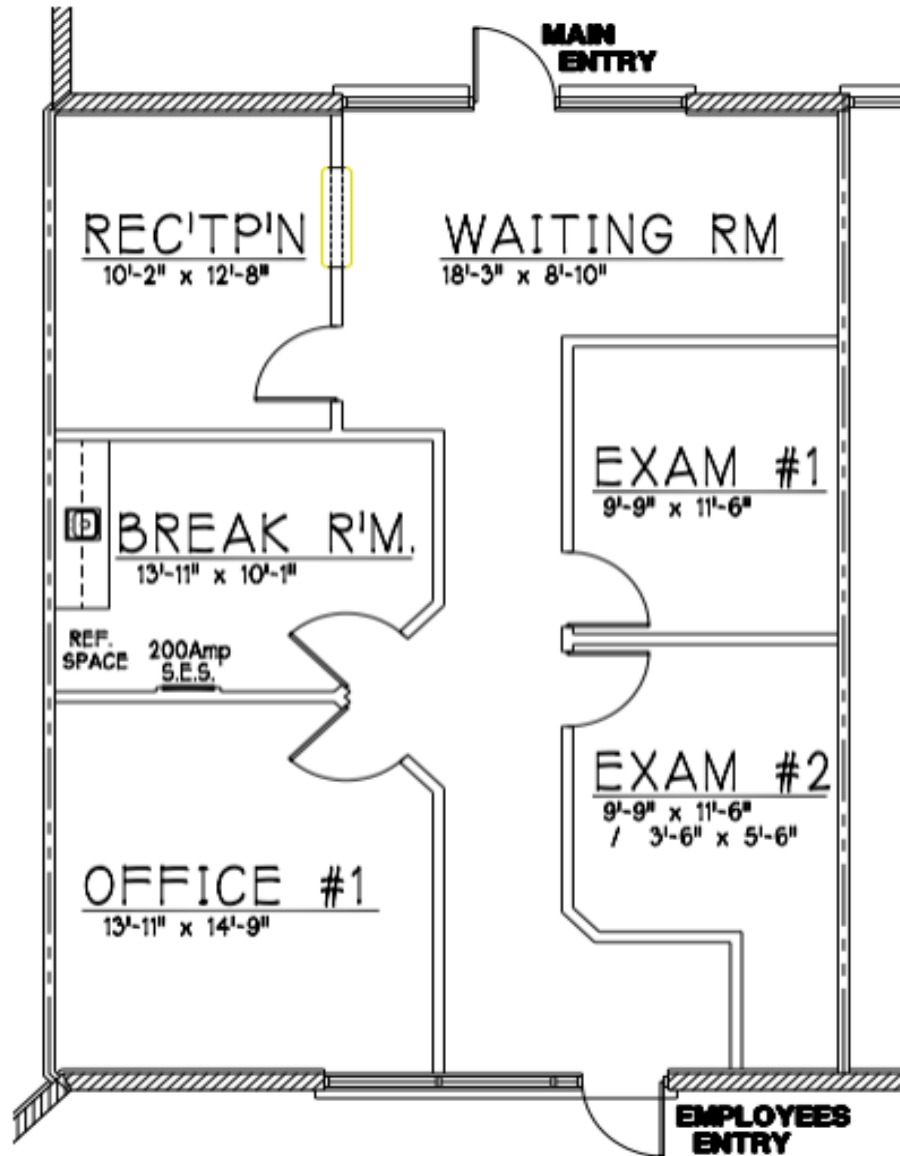
480-980-1869

matt@zrallc.net

7337 E. Doubletree Ranch Rd. Suite C 288 Scottsdale, AZ 85258
O. 480.248.8717 • F. 480.483.1792 • www.zdirealtyadvisors.com

Medical Office for Lease

13055/13065 W McDowell Road · Avondale, AZ 85392



ZDI
REALTY ADVISORS



Matthew Kostrivas

Associate

480-980-1869

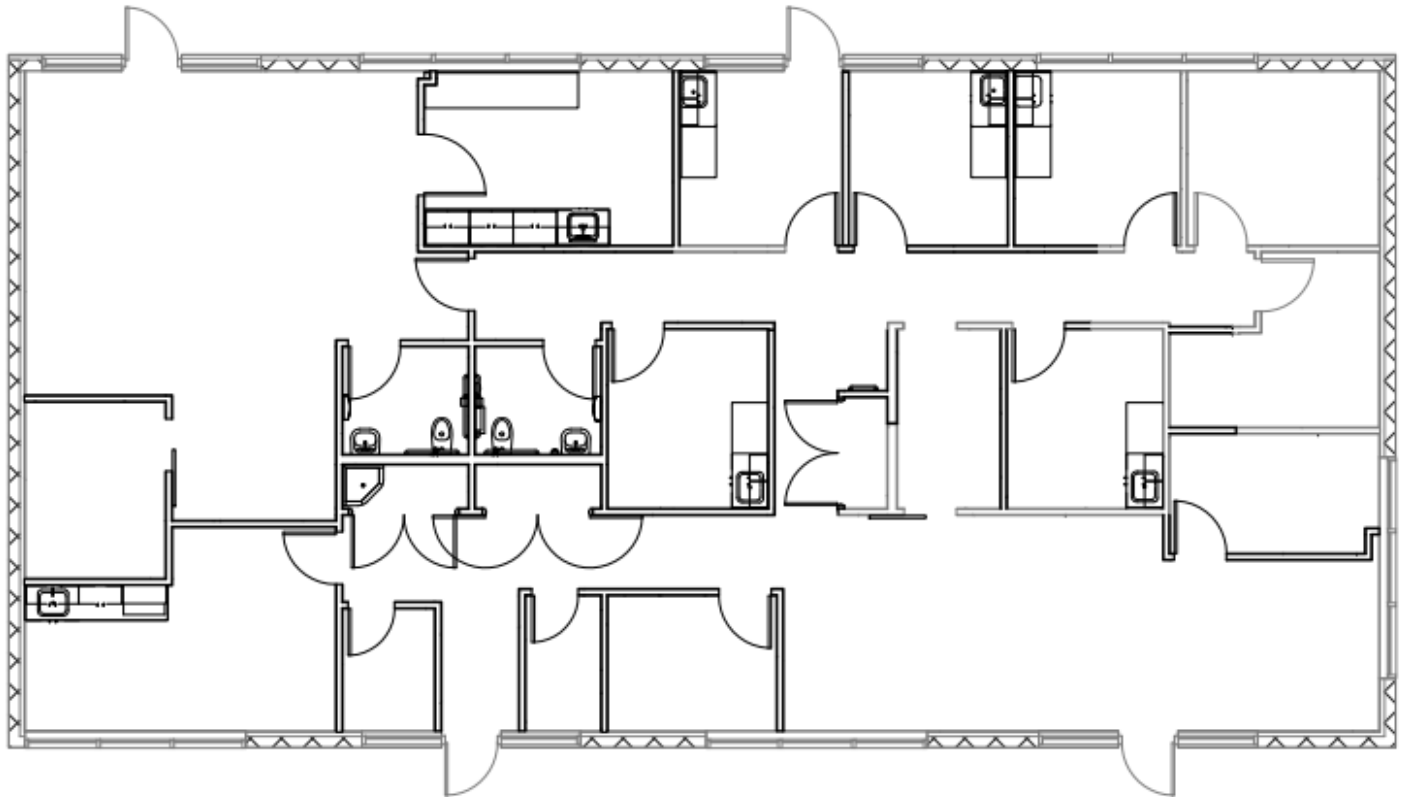
matt@zrallc.net

7337 E. Doubletree Ranch Rd. Suite C 288 Scottsdale, AZ 85258
O. 480.248.8717 • F. 480.483.1792 • www.zdirealtyadvisors.com

Medical Office for Lease

13055/13065 W McDowell Road · Avondale, AZ 85392

G-110/112



ZDI
REALTY ADVISORS



Matthew Kostrivas

Associate

480-980-1869

matt@zrallc.net

7337 E. Doubletree Ranch Rd. Suite C 288 Scottsdale, AZ 85258
O. 480.248.8717 • F. 480.483.1792 • www.zdirealtyadvisors.com