

AVAILABLE FOR LEASE

# SANDY COMMERCE PARK

9490 SOUTH 300 WEST  
SANDY, UTAH



AVAILABLE FOR LEASE

# SANDY COMMERCE PARK

9490 SOUTH 300 WEST  
SANDY, UTAH

- Asking Lease Rate: \$28.50 PSF
- Highly visible, prominent I-15 adjacent location
- Conveniently located between 2 major freeway exits (90th South and 106th South)
- Amenity-rich location near restaurants, hotels, and other services
- Fiber optic connectivity
- Spectacular mountain views
- Shower facilities
- Parking 5/1,000 SF

**ADDITIONAL SPACE AVAILABLE  
WITHIN THE BUILDING:**

**FLOOR 3:           25,000 RSF**  
**FLOOR 4:           25,000 RSF**  
**FLOOR 5:           25,000 RSF**

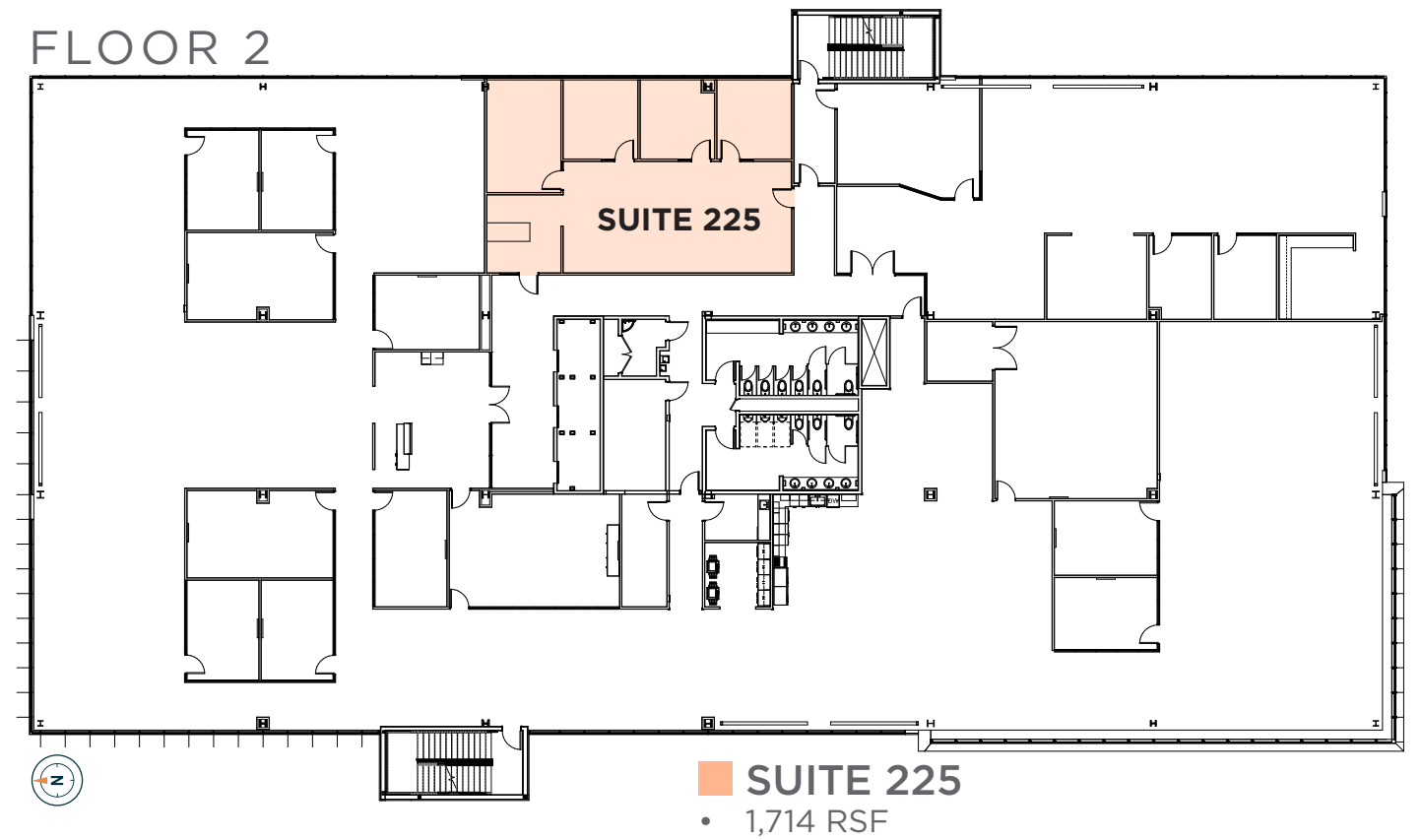
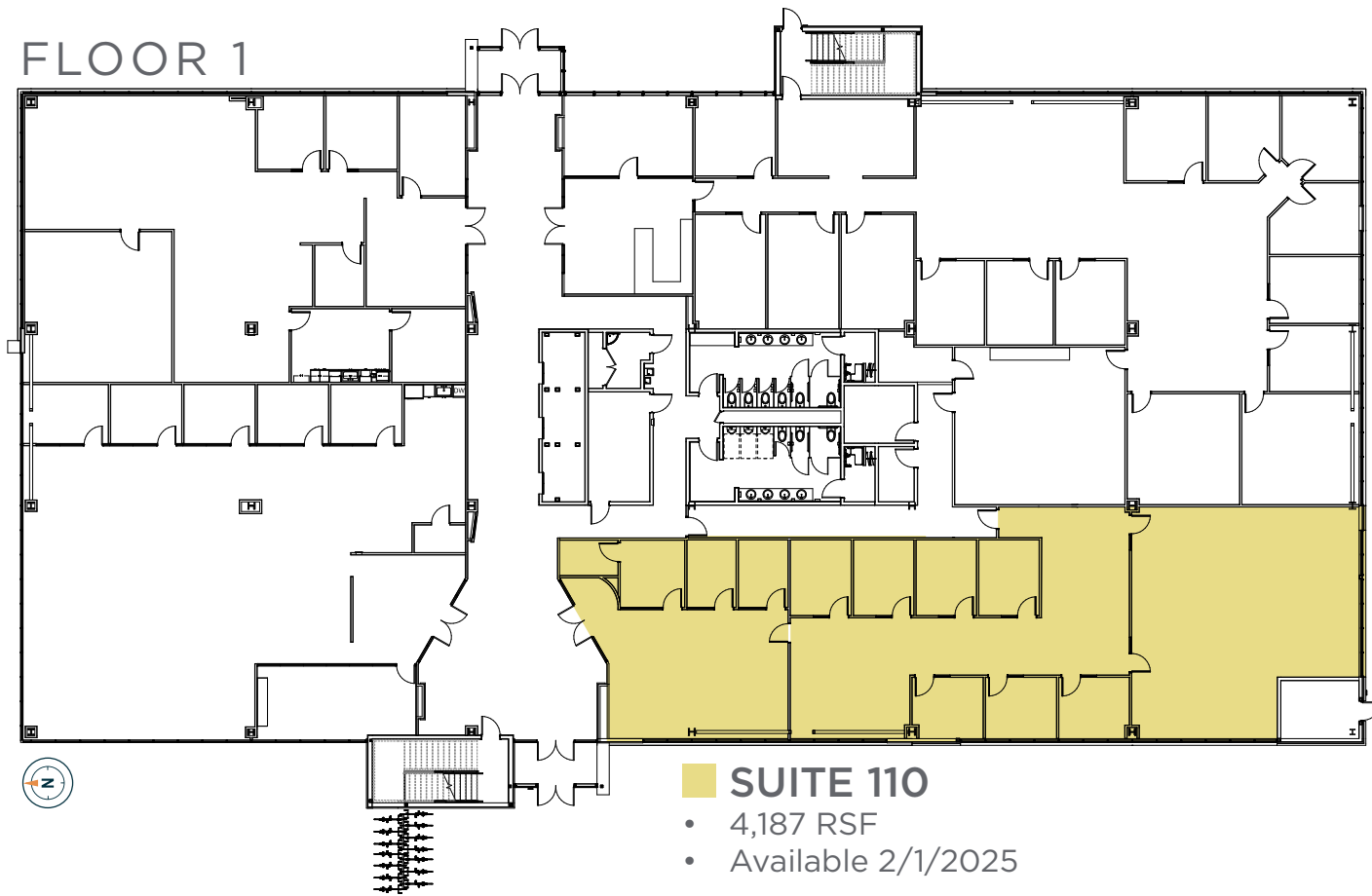
PLEASE CONTACT BROKER FOR DETAILS



# SANDY COMMERCE CENTER

9490 SOUTH 300 WEST / SANDY, UTAH

AVAILABLE FOR LEASE



## SUITE 100



## SUITE 225



# SANDY COMMERCE CENTER

9490 SOUTH 300 WEST / SANDY, UTAH

AVAILABLE FOR LEASE



**SITE**

- SHOPS AT SOUTH TOWN**
- American Eagle
  - Aeropostale
  - Buckle
  - Ethan Allen
  - Foot Locker
  - H&M
  - Hallmark
  - HomeGoods
  - JC Penney
  - Journeys
  - Lens Crafters
  - Morgan Jewelers
  - Pacsun
  - Round 1
  - Sephor
  - Vans
  - Zumiez

AVAILABLE FOR LEASE

# SANDY COMMERCE CENTER

FOR ADDITIONAL INFORMATION, CONTACT:

**Dana Baird, ccim**

Executive Managing Director  
+1 801 303 5526  
dana.baird@cushwake.com

**Mike Richmond**

Executive Managing Director  
+1 801 303 5434  
mike.richmond@cushwake.com



**CUSHMAN &  
WAKEFIELD**

170 South Main Street Suite 1600  
Salt Lake City, UT

+1 801 322 2000 [cushmanwakefield.com](http://cushmanwakefield.com)