

GLEMKA BUSINESS PARK

43264 BUSINESS PARK DRIVE, TEMECULA, CA 92590

PROFESSIONAL OFFICE
SPACE FOR LEASE



FOR MORE INFORMATION, PLEASE CONTACT:

CAREY PASTOR | Senior Vice President

(951) 297-7434 | cpastor@cbcsocalgroup.com

CalDRE License # 01403298



**COLDWELL BANKER
COMMERCIAL**
SC

GLEMKA BUSINESS PARK

43264 BUSINESS PARK DRIVE, TEMECULA, CA 92590

PROFESSIONAL OFFICE
SPACE FOR LEASE



PROJECT HIGHLIGHTS

- The Glemka Business Park is located on Business Park Drive in Temecula, CA
- Easy access to the I-15 freeway via Rancho California Rd.
- Ample parking
- +/- 1,700 - 2,575 SF available. Can be combined for up to +/- 4,275 SF
- Multiple office configurations available
- Immediate availability
- FiOS enabled

GLEMKA BUSINESS PARK

43264 BUSINESS PARK DRIVE, TEMECULA, CA 92590

PROFESSIONAL OFFICE
SPACE FOR LEASE

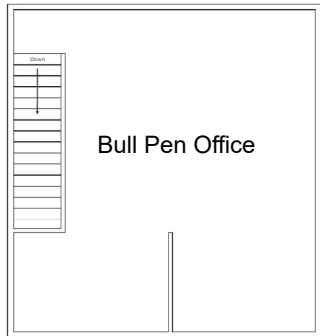
AVAILABILITY

43264 Business Park Drive

SUITE	SIZE	MONTHLY BASE RENT	EST. MONTHLY CAOAE	SPACE DESCRIPTION
105	±2,575 SF	\$3,065.00	\$541.00	1st floor: reception area, 2 private offices, 1 restroom, wetbar 2nd floor: 1 private office and 2 open bull-pen offices
106	±1,700 SF	\$2,023.00	\$357.00	1st floor: reception area, 2 private offices, 1 restroom, wetbar 2nd floor: open bull-pen office

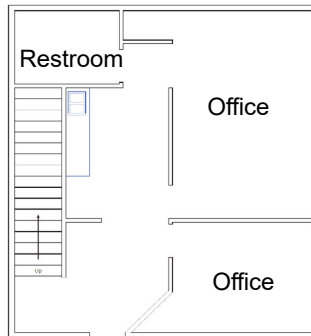
CAOE = Common Area Operating Expenses

**SUITE 106
2ND FLOOR**

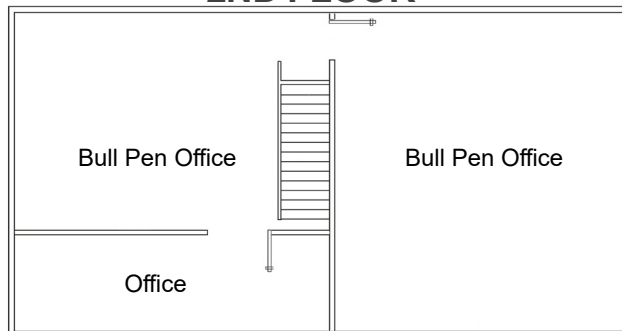


* Not to scale

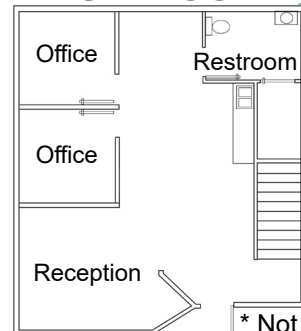
**SUITE 106
1ST FLOOR**



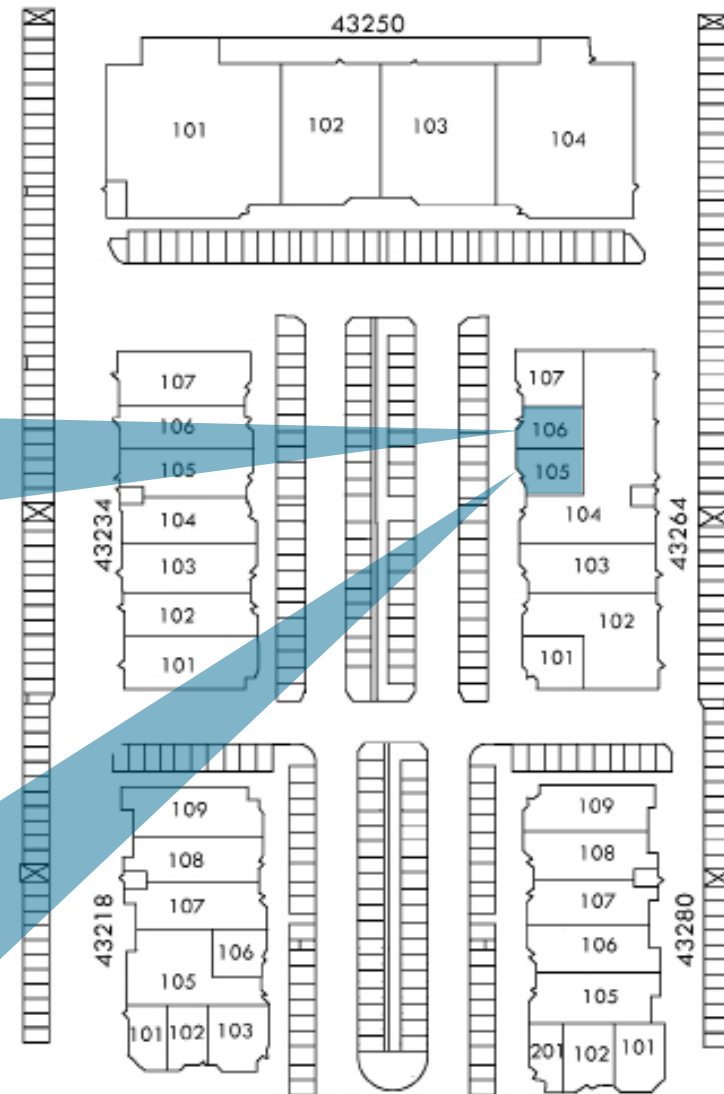
**SUITE 105
2ND FLOOR**



**SUITE 105
1ST FLOOR**



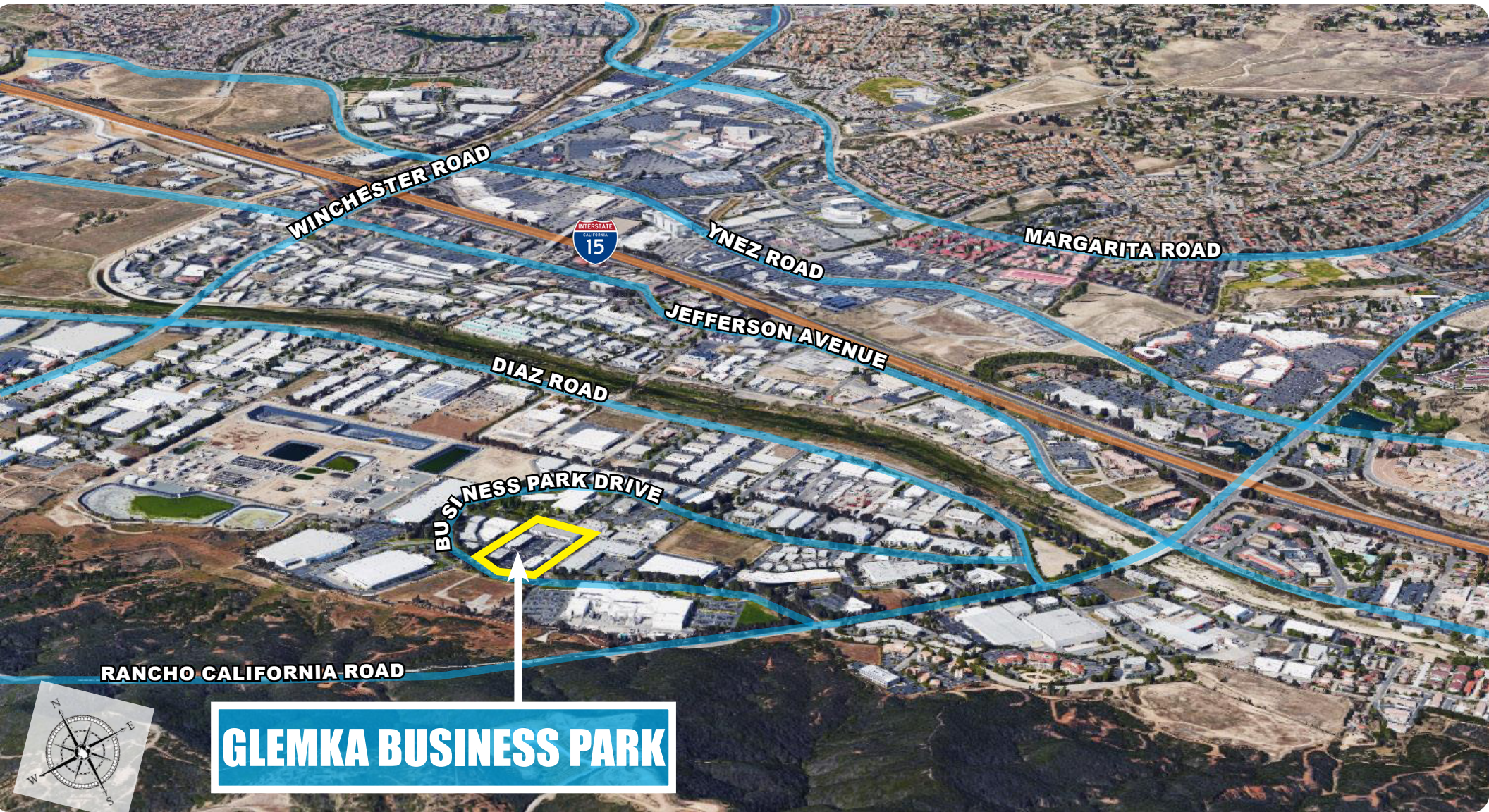
* Not to scale



GLEMKA BUSINESS PARK

43264 BUSINESS PARK DRIVE, TEMECULA, CA 92590

PROFESSIONAL OFFICE
SPACE FOR LEASE

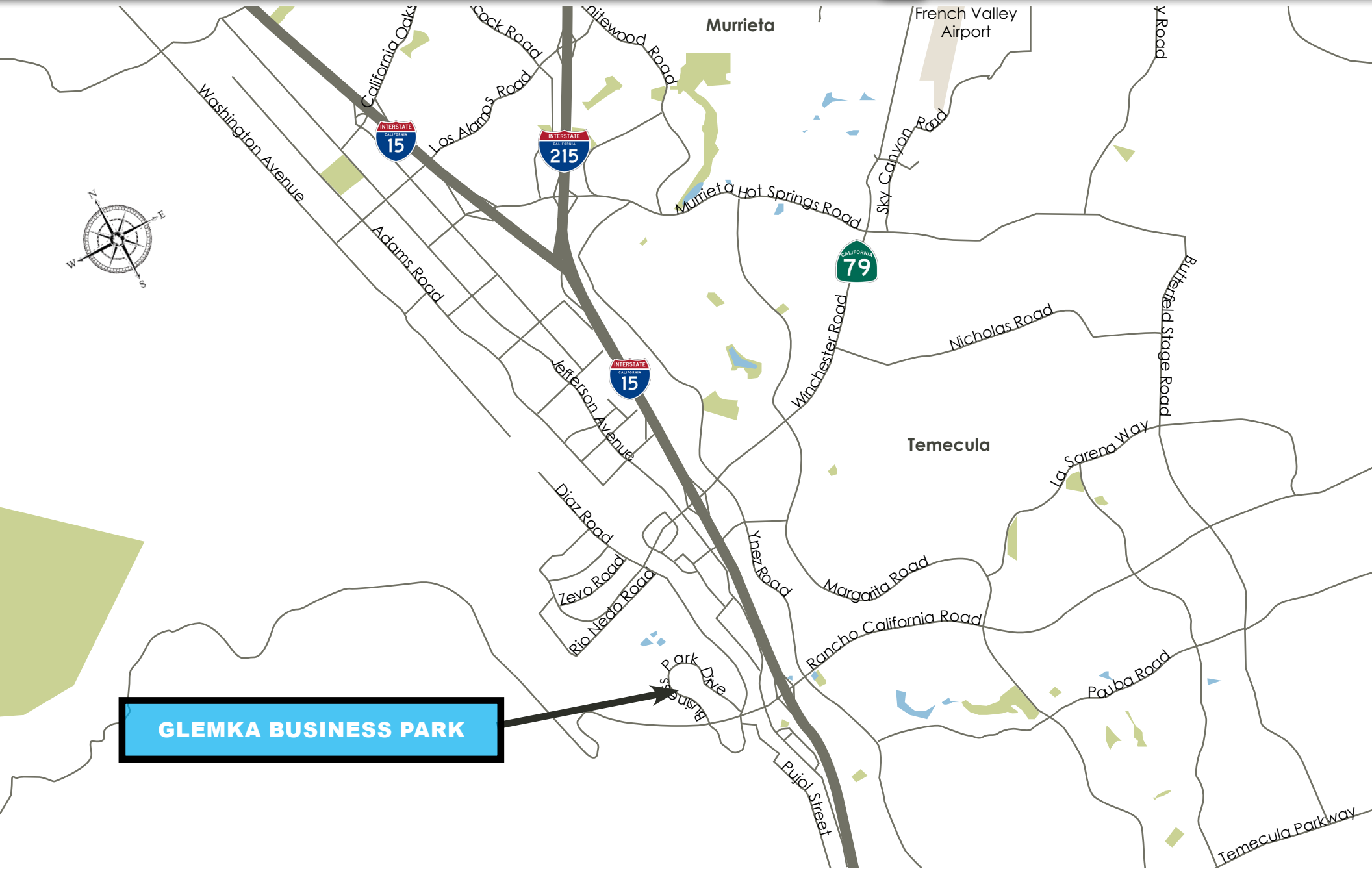


GLEMKA BUSINESS PARK

GLEMKA BUSINESS PARK

43264 BUSINESS PARK DRIVE, TEMECULA, CA 92590

PROFESSIONAL OFFICE
SPACE FOR LEASE



GLEMKA BUSINESS PARK

43264 BUSINESS PARK DRIVE, TEMECULA, CA 92590

PROFESSIONAL OFFICE
SPACE FOR LEASE



FOR MORE INFORMATION, PLEASE CONTACT:

CAREY PASTOR

Senior Vice President

951.297.7434

cpastor@cbsocalgroup.com

CalDRE # 01403298

27368 Via Industria | Suite 102

Temecula | California | 92590

t 951.200.7683 | f 951.239.3147

cbsocalgroup.com



**COLDWELL BANKER
COMMERCIAL**

SC