

4,100 SF CLASS A OFFICE/MEDICAL SUITE FOR LEASE

350 Goose Lane, Guilford, CT – Building A

Lease Rate: Available Upon Request



+ Suite Highlights:

- 4,100 square foot in stand-alone building
- High-end interior finishes
- Includes private greenhouse and adjacent outdoor patio area with picnic tables
- Beautifully designed post-and-beam timber construction
- Highly desirable suite in rarely available professional office & medical park

+ Location Highlights:

- Half a mile from I-95 (Exit 59) and YNHH Shoreline Medical Center
- Proximity to Route 1 and 1.5 miles from downtown Guilford

Contact: Matt Horton | mhorton@hortongroupllc.com | 203-815-2898



4,100 SF CLASS A OFFICE/MEDICAL SUITE FOR LEASE

350 Goose Lane, Guilford, CT – Building A

Lease Rate: Available Upon Request



+ Amenities:

- Employee amenities:
 - Spacious courtyard with picnic tables and benches
 - Viewing platform with pond views
 - Outdoor collaborative working areas
- Ample parking with 195 shared spaces (5 spaces per 1,000 SF)
- Exterior building signage availability with Goose Lane frontage
- Quick access to I-95 (Exit 59) and Route 1
- Annual on-site tenant appreciation party hosted by landlord
- Buildings operated to the highest standards in the market
- Local landlord with internal property and construction management

Contact: Matt Horton | mhorton@hortongroupllc.com | 203-815-2898

4,100 SF CLASS A OFFICE/MEDICAL SUITE FOR LEASE

350 Goose Lane, Guilford, CT – Building A

Lease Rate: Available Upon Request

Exterior/Interior Photographs



Contact: Matt Horton | mhorton@hortongroupllc.com | 203-815-2898



4,100 SF CLASS A OFFICE/MEDICAL SUITE FOR LEASE

350 Goose Lane, Guilford, CT – Building A

Lease Rate: Available Upon Request



Contact: Matt Horton | mhorton@hortongroupllc.com | 203-815-2898



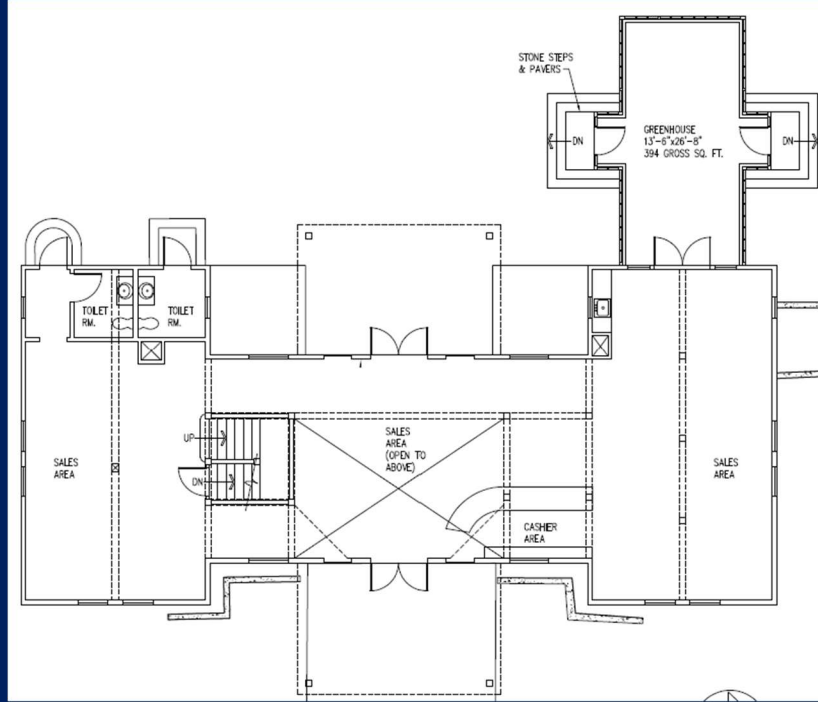
4,100 SF CLASS A OFFICE/MEDICAL SUITE FOR LEASE

350 Goose Lane, Guilford, CT – Building A

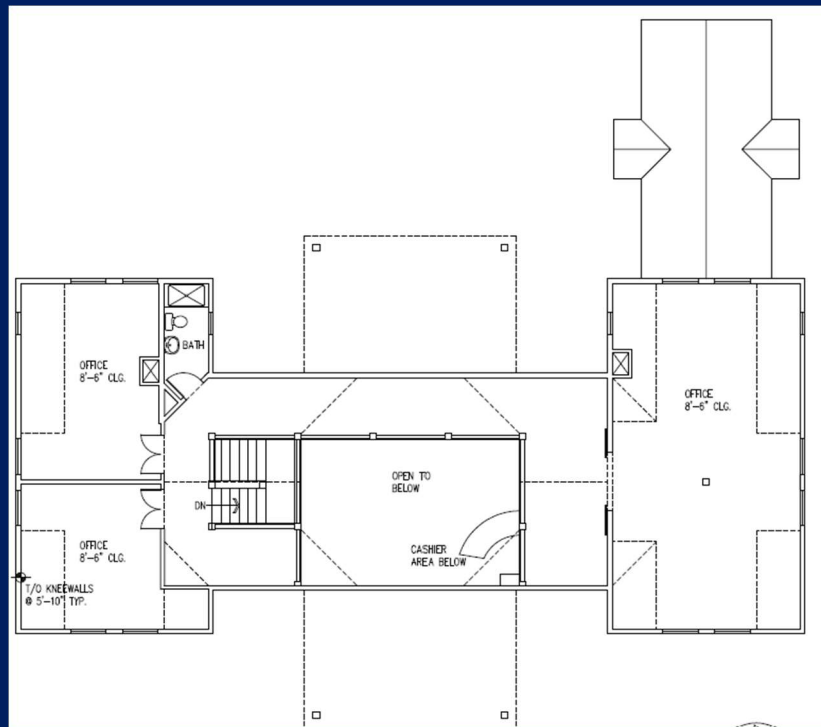
Lease Rate: Available Upon Request

Floor Plans

First Floor:



Second Floor:



*Note: Floor Plans above might not reflect current configuration of space.

Contact: Matt Horton | mhorton@hortongroupllc.com | 203-815-2898