

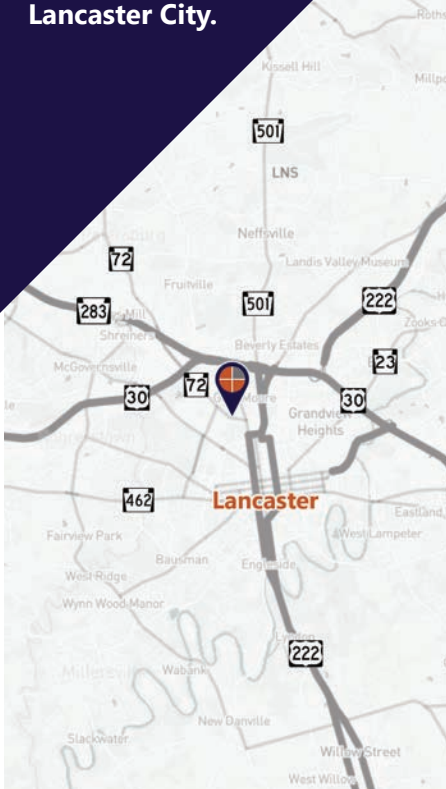
GREAT OFFICE / FLEX SPACE

Lancaster City | Lancaster County

1085 Manheim Pike Lancaster, PA 17601

FOR LEASE

Great office/flex spaces situated along high-volume corridor, Manheim Pike, and easily accessible from major highways and Lancaster City.



Marisa Benjamin
Cell: 717.615.1665
marisa@truecommercial.com



For More Information Call: 717.850.TRUE (8783) | 1018 N. Christian St. Lancaster, PA 17602 | www.TRUECommercial.com

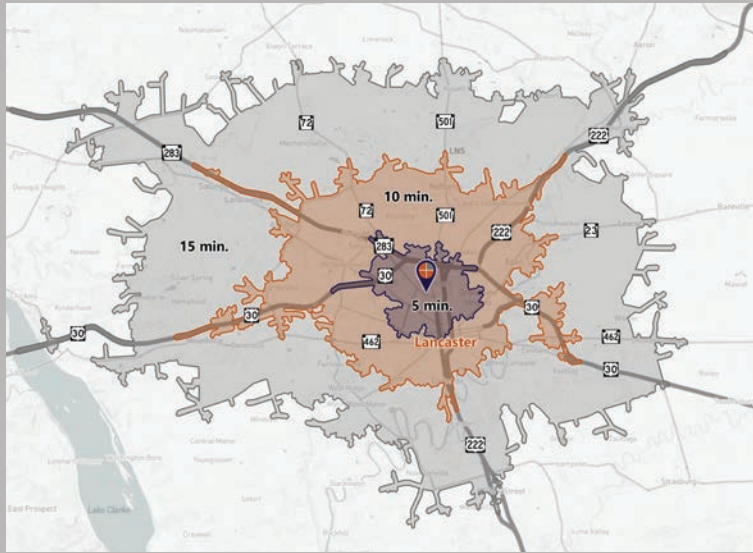


GREAT OFFICE / FLEX SPACE

DEMOGRAPHICS

Variable	1085 Manheim Pike Lancaster, PA 17601		
Travel Distance from Site	5 minutes	10 minutes	15 minutes
Total Population	20,005	120,740	223,198
Population Density (Pop per Sq. Mile)	3,493.0	3,323.8	1,722.7
Total Daytime Population	37,462	140,634	244,796
Total Households	8,167	47,144	87,814
Per Capita Income	\$31,972	\$31,595	\$34,575
Average Household Income	\$77,756	\$81,006	\$88,264
Average Disposable Income	\$59,744	\$62,146	\$67,441
Aggregate Disposable Income	\$487,925,332	\$2,929,806,436	\$5,922,306,649
Total (SIC01-99) Businesses	1,997	6,223	9,692
Total (SIC01-99) Employees	40,315	102,087	160,071
Total (SIC01-99) Sales (\$000)	\$4,985,239	\$16,253,512	\$31,281,843
Annual Budget Expenditures	\$550,280,523	\$3,283,266,493	\$6,627,210,939
Retail Goods	\$162,259,317	\$974,459,044	\$1,983,232,558

Travel Distance from Site



PROPERTY & MARKET OVERVIEW

Outstanding location on Manheim Pike / PA Route 72, situated along this high-volume corridor that offers easy access to US Route 30, Route 283 and is right outside of Lancaster City.

Unit B is a unique flex space with many great possibilities for a variety of potential businesses. There are two entrance options, one along the side of the building and another at the back that can be utilized for deliveries, handicap accessibility or as your main entry. This space contains a private office, two large open flex rooms, a bathroom, and a room with a commercial kitchen hood system and walk-in units. This a great space for a contractor, office professional, catering business, event space, the possibilities are endless.

PROPERTY DETAILS

- Total Building Size:..... 7,820 SF
- Lease Rate:.....Negotiable
- Lease Terms:.....Negotiable
- Zoning:..... Central Manufacturing (CM)
- Land/Lot Size:.....0.6 Acres
- Parking:..... Shared, On-Site
- Year Built:..... 1980
- Heating:..... Broiler
- Cooling:.....HVAC
- Water/Sewer:..... Public

SPACE AVAILABLE

- Unit B: 2,747 SF

TRAFFIC COUNTS

- Manheim Pike/Route 72:..... 11,020 VPD
- Fruitville Pike:..... 14,849 VPD

Brand New Construction
33,000 SF Home Improvement
Store & Donation Center
Directly Adjacent to Property



For More Information Call: 717.850.TRUE (8783) | www.TRUECommercial.com

ESTABLISHED REGIONAL AREA MAP

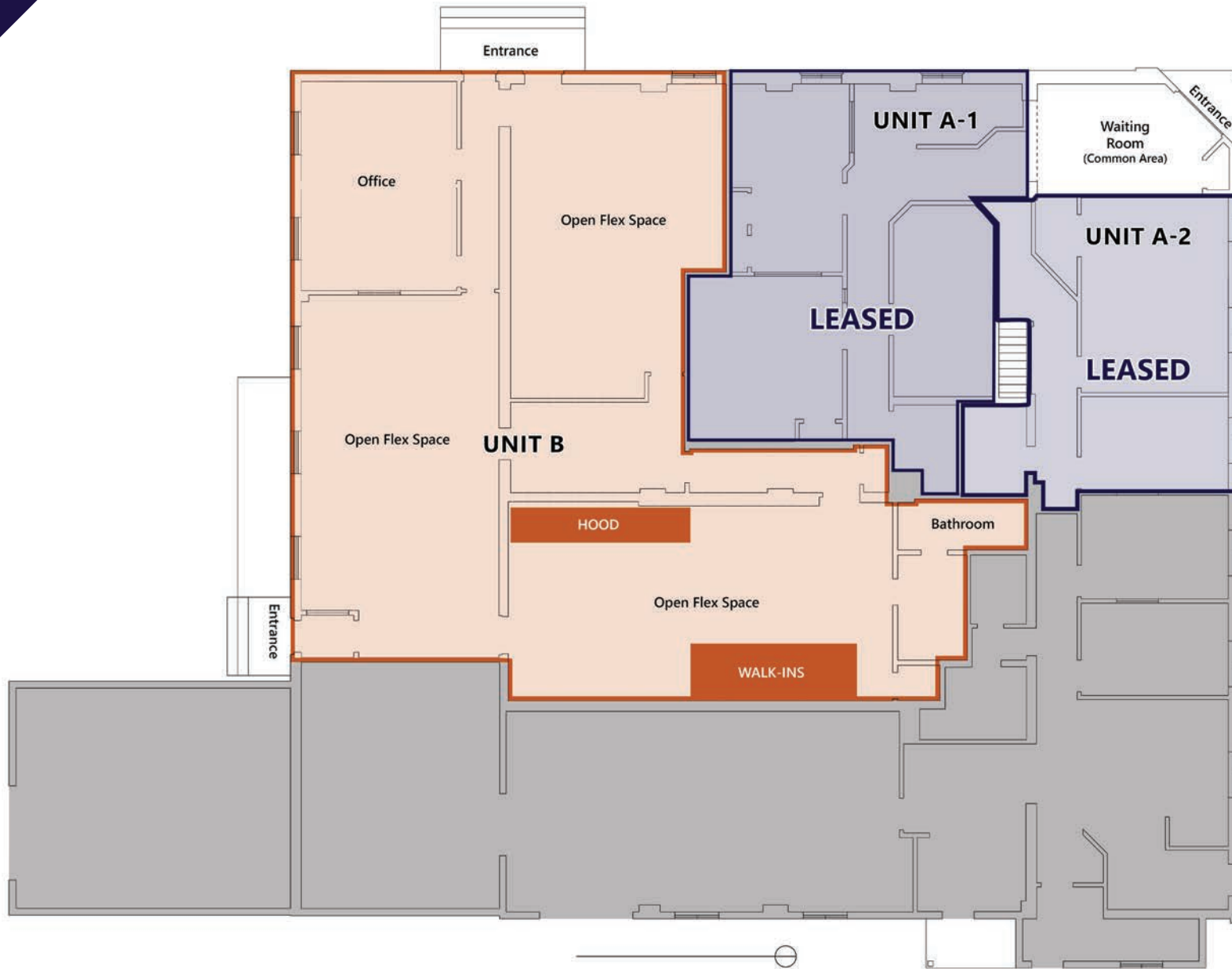


For More Information Call: 717.850.TRUE (8783) | www.TRUECommercial.com

The information has been secured from sources we believe to be reliable. TRUE Commercial Real Estate LLC makes no representations or warranties, express or implied, as to the accuracy of the information. References to square footage or age are approximate. Buyer must verify the information and bears all risk for any inaccuracies.

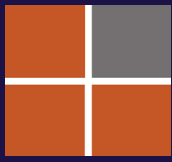


FLOOR PLAN | 1085 MANHEIM PIKE

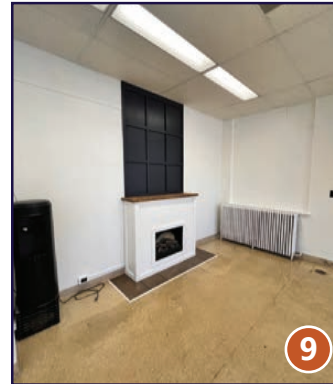
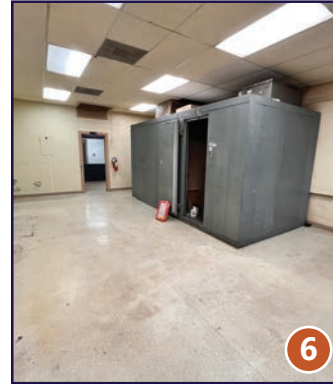
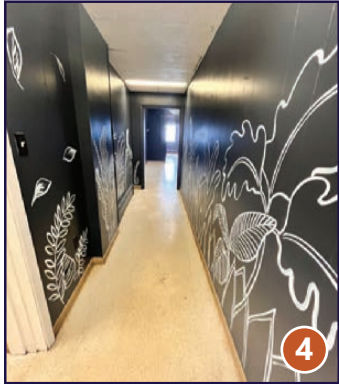
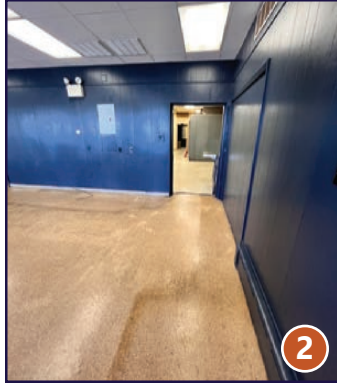


For More Information Call: 717.850.TRUE (8783) | www.TRUECommercial.com

The information has been secured from sources we believe to be reliable. TRUE Commercial Real Estate LLC makes no representations or warranties, express or implied, as to the accuracy of the information. References to square footage or age are approximate. Buyer must verify the information and bears all risk for any inaccuracies.

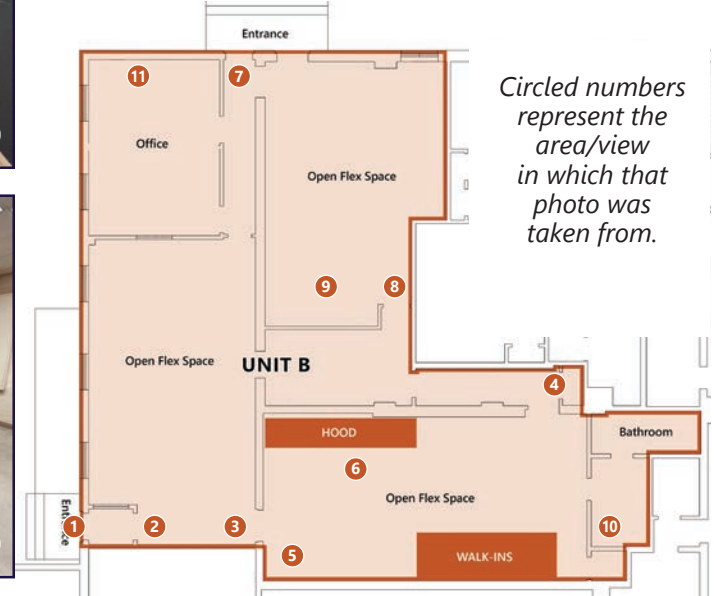


UNIT B | SPACE OVERVIEW & PHOTOS



SPACE OVERVIEW

- 2,747 SF - First Floor, Rear Space
- Two (2) Large Open Flex Spaces
- One (1) Bathroom and One (1) Private Office
- One (1) Room with Hood & Walk-Ins

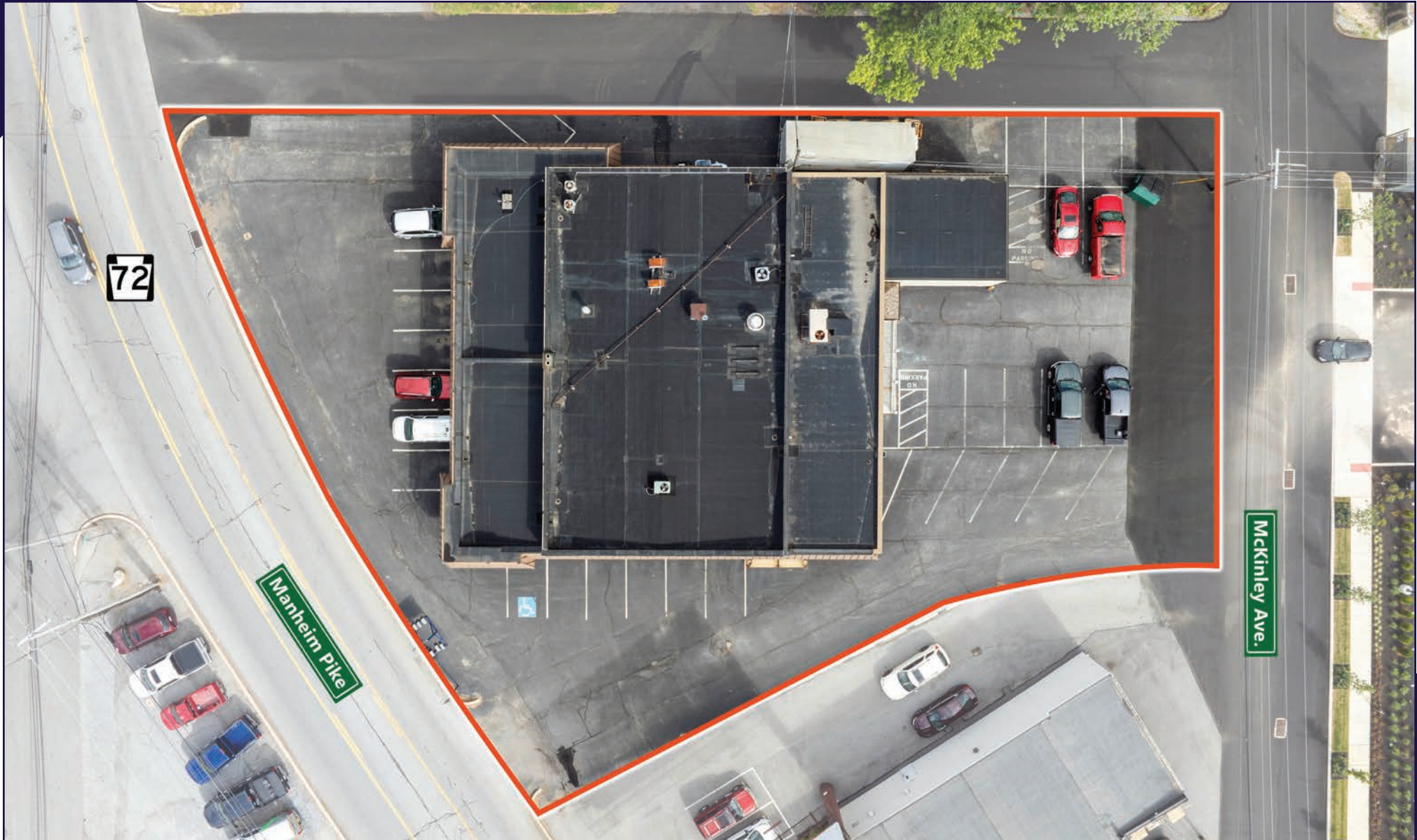


For More Information Call: 717.850.TRUE (8783) | www.TRUECommercial.com

The information has been secured from sources we believe to be reliable. TRUE Commercial Real Estate LLC makes no representations or warranties, express or implied, as to the accuracy of the information. References to square footage or age are approximate. Buyer must verify the information and bears all risk for any inaccuracies.



AERIAL DRONE PHOTO



For More Information Call: 717.850.TRUE (8783) | www.TRUECommercial.com

The information has been secured from sources we believe to be reliable. TRUE Commercial Real Estate LLC makes no representations or warranties, express or implied, as to the accuracy of the information. References to square footage or age are approximate. Buyer must verify the information and bears all risk for any inaccuracies.



AERIAL DRONE PHOTO



For More Information Call: 717.850.TRUE (8783) | www.TRUECommercial.com

The information has been secured from sources we believe to be reliable. TRUE Commercial Real Estate LLC makes no representations or warranties, express or implied, as to the accuracy of the information. References to square footage or age are approximate. Buyer must verify the information and bears all risk for any inaccuracies.



AERIAL DRONE PHOTO



For More Information Call: 717.850.TRUE (8783) | www.TRUECommercial.com

The information has been secured from sources we believe to be reliable. TRUE Commercial Real Estate LLC makes no representations or warranties, express or implied, as to the accuracy of the information. References to square footage or age are approximate. Buyer must verify the information and bears all risk for any inaccuracies.