

1960 Diamond Hill Rd,  
Suites B, C, D, E  
Chesapeake, VA 23324

# FOR LEASE HIGH-BAY INDUSTRIAL PORT OF VIRGINIA

**± 200,210 Sq. Ft.  
Available (Subdividable)**

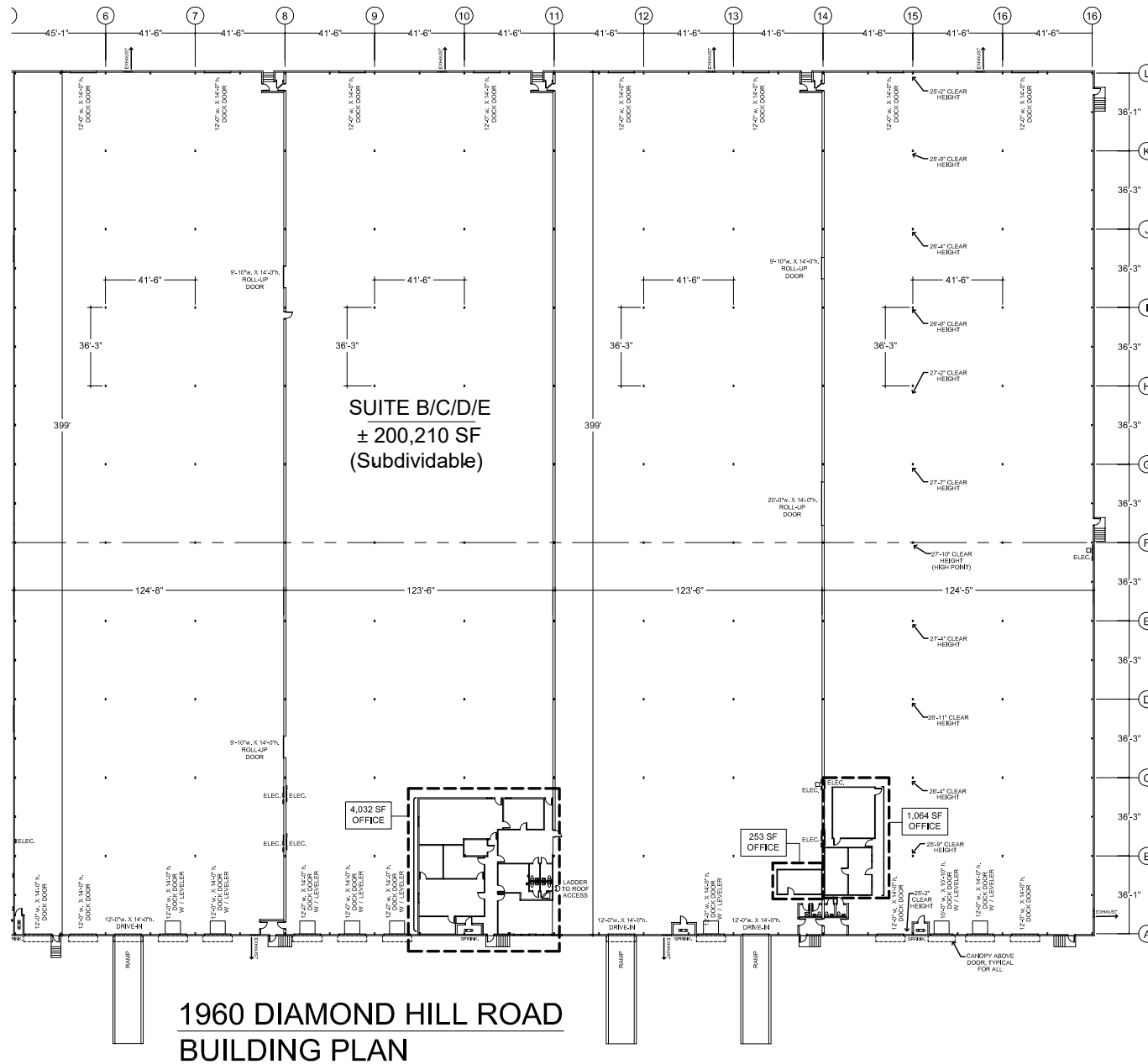
## **SPECIFICATIONS**

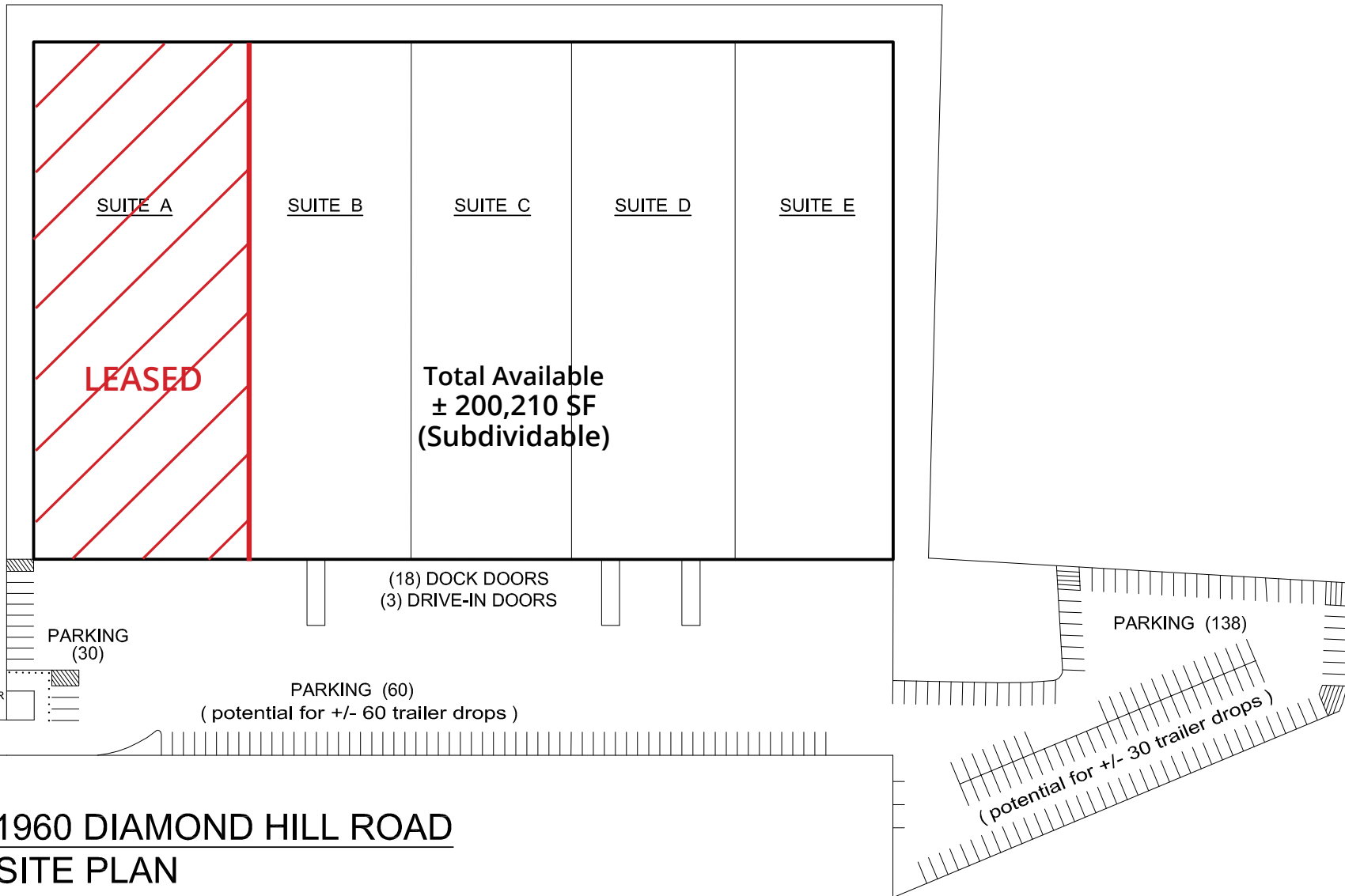
- ± 200,210 Sq. Ft.
- ± 5,349 Sq. Ft. of Office
- Rail Potential via private Norfolk Southern Spur
- ESFR Sprinkler System Available (currently Dry System)
- Twelve 12' x 14' Dock Doors
  - 8 with in-ground pit levelers
  - 4 with edge-of-dock levelers
- Three 12' x 14' Grade Level Loading Doors
- Eight 12' x 14' Rail Loading Doors
- Column Spacing: Typical ± 41'6" x ± 36'3"
- Ceiling Height: ± 27'
- 3-Phase Electrical Power
- M-2 Zoning (Heavy Industrial)
- Central Hampton Roads "Inside the Beltway" Location
- Amongst the lowest drayage rates in the region
- Immediate access to I-64, I-264, I-464, I-664, US-13, US-58, US-460
- Large shared paved trailer storage yard available
- Foreign Trade Zone and ICE Coffee Future eligibility
- Institutionally owned by Lovett Industrial

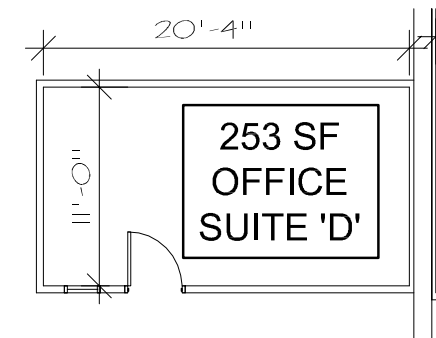
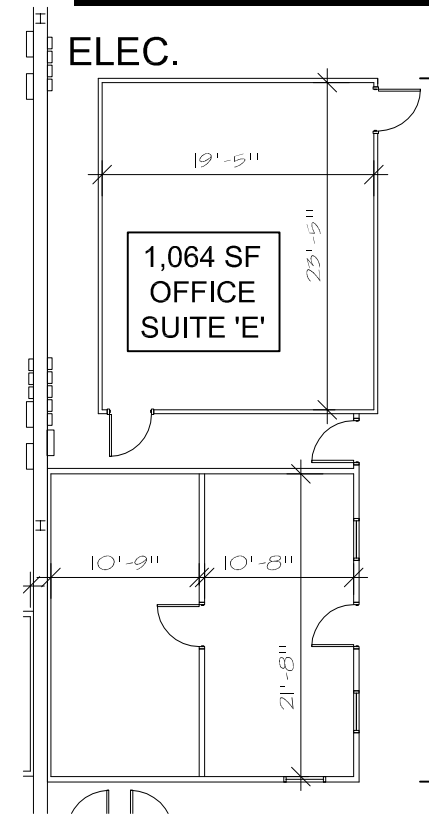
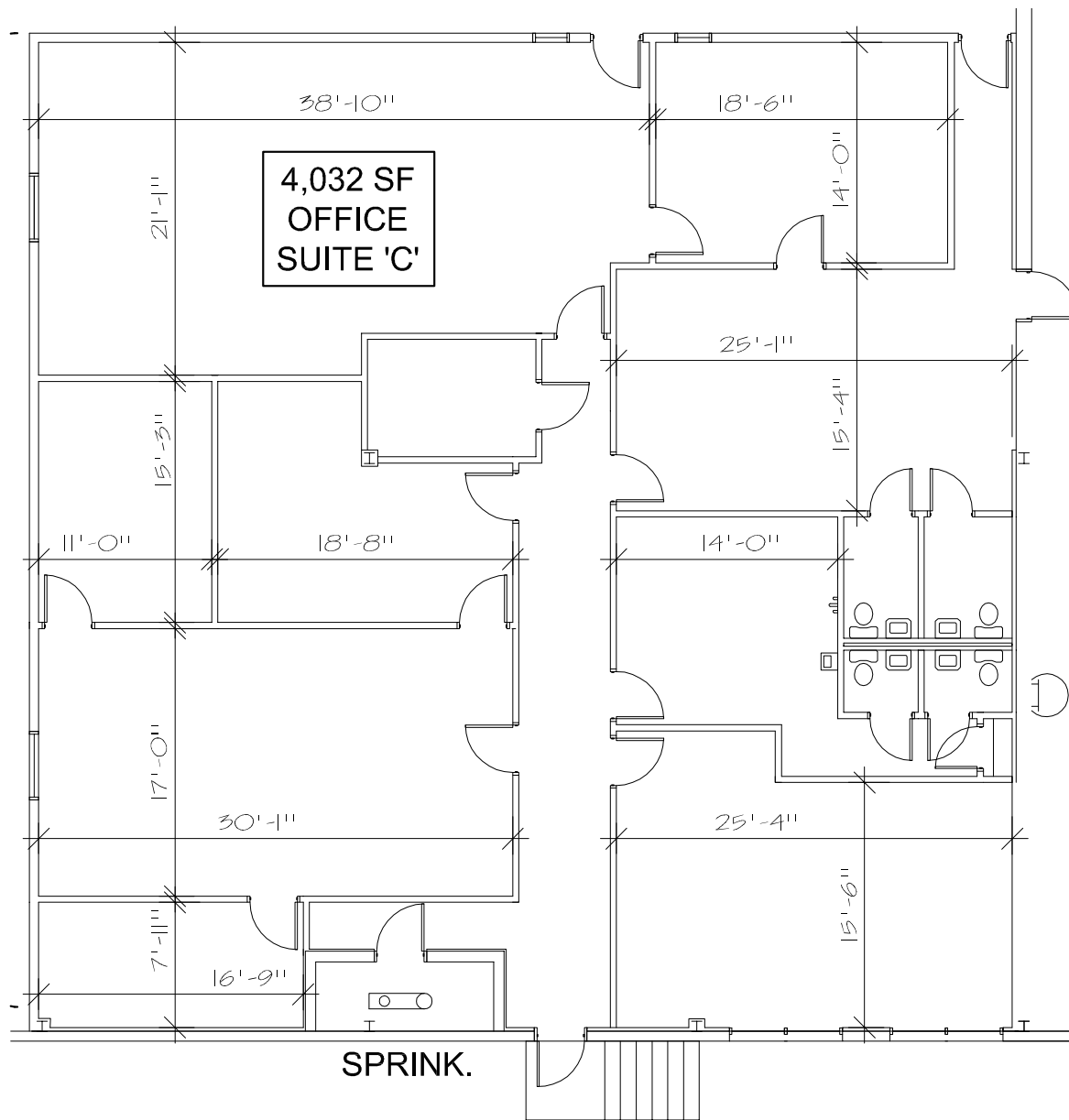


For more information:  
CHARLES L. DICKINSON, SIOR  
757.640.9468  
[CharlesDickinson@HarveyLindsay.com](mailto:CharlesDickinson@HarveyLindsay.com)

**HARVEY LINDSAY**  
COMMERCIAL REAL ESTATE

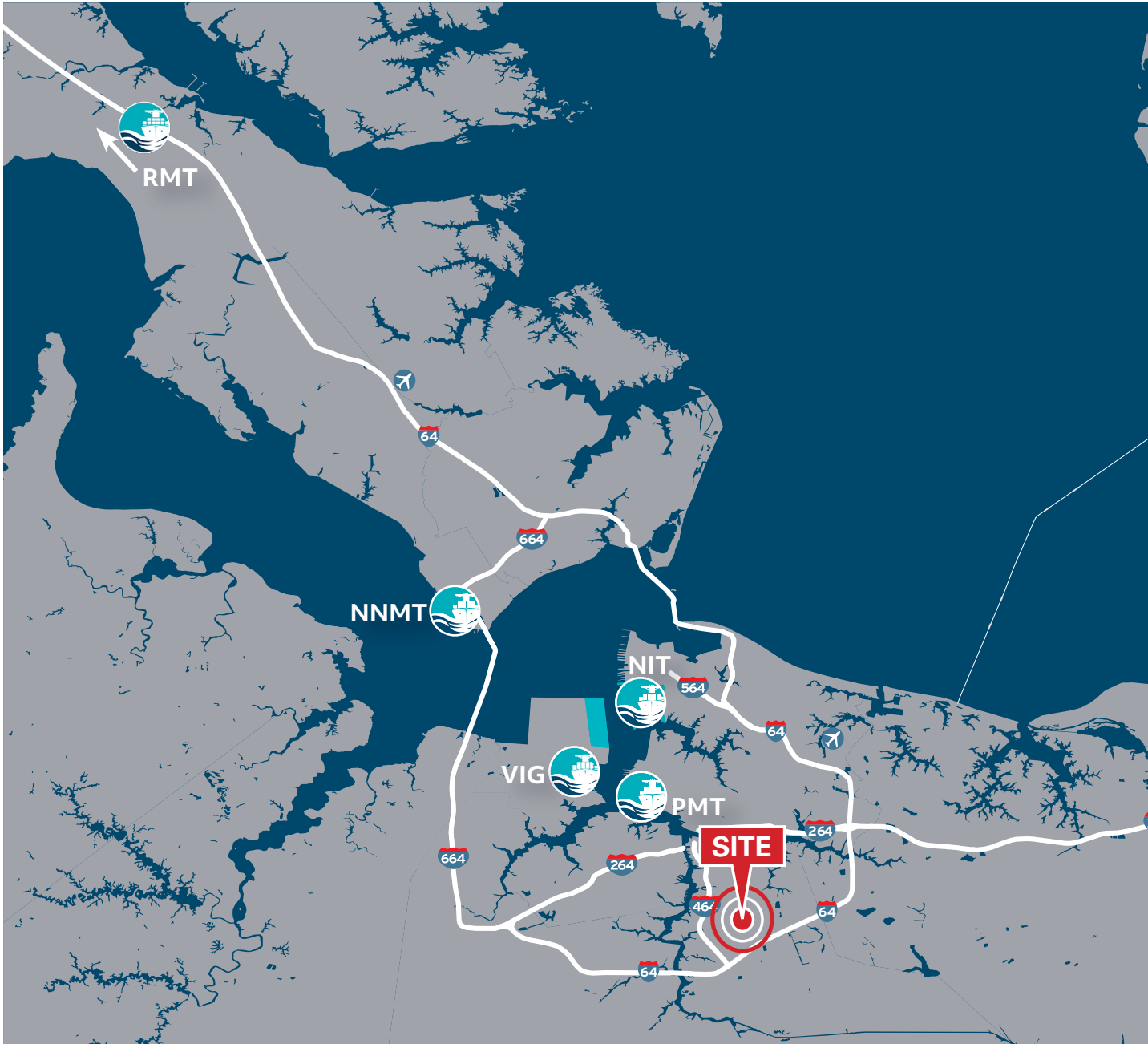






# FOR LEASE - 1960 Diamond Hill Rd, Chesapeake, VA

## LOCATION MAP & DRIVING DISTANCES



### APPROXIMATE DISTANCES

Virginia International Gateway	± 11 Miles
Norfolk International Terminal	± 12 Miles
Portsmouth Marine Terminal	± 10 Miles
Craney Island (Future)	± 12 Miles
Newport News Marine Terminal	± 25 Miles
I-64	± 1.9 Miles
I-464	± 1.3 Miles
US-58 / I-664	± 11 Miles
US-13	± 1.0 Miles
I-95	± 79 Miles
Norfolk Naval Shipyard	± 6 Miles
Norfolk International Airport	± 14 Miles
Little Creek - Joint Exp. Base	± 15 Miles
Norfolk Naval Base	± 15 Miles
Oceana Naval Air Station	± 19 Miles
NN Shipbuilding	± 25 Miles

For more information:  
 CHARLES L. DICKINSON, SIOR  
 757.640.9468  
[CharlesDickinson@HarveyLindsay.com](mailto:CharlesDickinson@HarveyLindsay.com)

**HARVEY LINDSAY**  
 COMMERCIAL REAL ESTATE