

FOR SALE

1,475 SF INDUSTRIAL FLEX CONDO

12960 Commerce Lakes Drive, Unit 4, Fort Myers, FL 33913

LEE & ASSOCIATES
COMMERCIAL REAL ESTATE SERVICES

DANIELS PRESERVE AT WORTHINGTON COMMERCE PARK



SALE PRICE: \$400,000

PROPERTY FEATURES

- Built in 2007
- One (1) 10' x 12' Overhead Door
- Concrete Tilt-Up Construction
- Hurricane Impact Glass
- 18' Warehouse Ceiling Height
- Professional Landscaping
- Abundant Parking
- Extensive Exterior Lighting
- Condo Fees: \$1,165 / Quarterly

LOCATION

- Central Location Off Daniels Parkway
- Minutes from I-75 & Southwest Florida International Airport (RSW)



For more information please contact:

Brock Rasmussen
Principal

Direct 239.209.0458

brasmussen@lee-associates.com

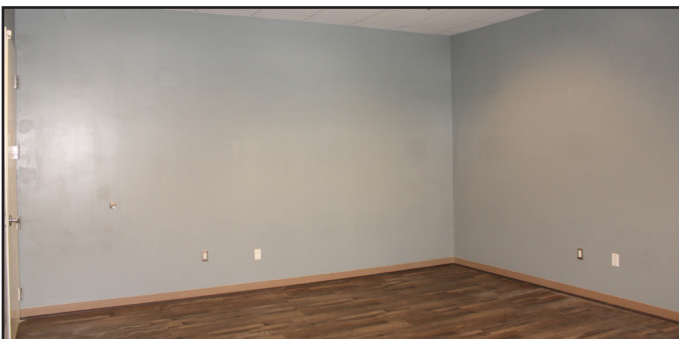
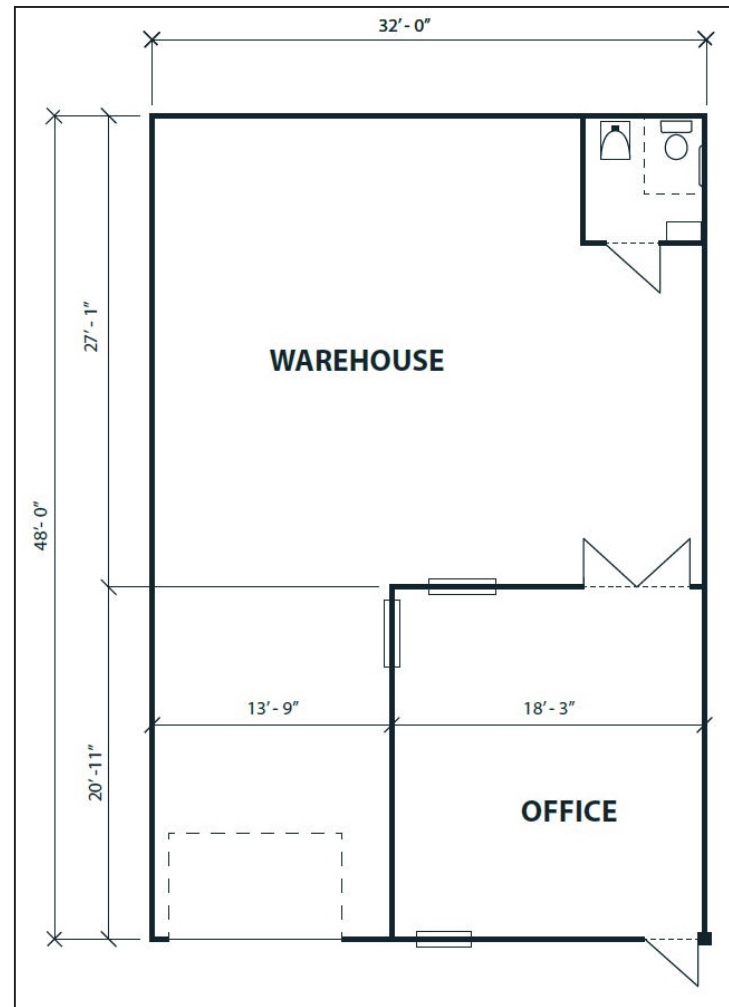
Lee & Associates | Naples-Ft. Myers
7400 Trail Boulevard, Suite 101
Naples, FL 34108
www.Lee-FL.com

YOUR LOCAL MARKET EXPERT

FOR SALE

1,475 SF INDUSTRIAL FLEX CONDO

12960 Commerce Lakes Drive, Unit 4, Fort Myers, FL 33913



LEE & ASSOCIATES
COMMERCIAL REAL ESTATE SERVICES

Lee & Associates | Naples-Ft. Myers,
7400 Trail Boulevard, Suite 101
Naples, FL 34108

The information contained herein was obtained from sources believed reliable, however, Lee & Associates makes no guarantees, warranties or representations as to the completeness or accuracy thereof. The presentation of this property is submitted subject to errors, omissions, change of price or conditions prior to sale or lease or withdrawal without notice.

YOUR LOCAL MARKET EXPERT

FOR SALE

1,475 SF INDUSTRIAL FLEX CONDO

12960 Commerce Lakes Drive, Unit 4, Fort Myers, FL 33913



LEE & ASSOCIATES
COMMERCIAL REAL ESTATE SERVICES

Lee & Associates | Naples-Ft. Myers,
7400 Trail Boulevard, Suite 101
Naples, FL 34108

The information contained herein was obtained from sources believed reliable, however, Lee & Associates makes no guarantees, warranties or representations as to the completeness or accuracy thereof. The presentation of this property is submitted subject to errors, omissions, change of price or conditions prior to sale or lease or withdrawal without notice.

YOUR LOCAL MARKET EXPERT