

111 GREAT NECK RD

GREAT NECK, NEW YORK



Office Space Available for Lease

Introducing "**The Towers**": Premier Class A Office Building.

Nestled in a prime location, "**The Towers**" presents an exemplary embodiment of sophisticated office environments. This distinguished office edifice, renowned for its architectural elegance, offers unparalleled amenities and strategic advantages for discerning professionals.

Elegant Modernity: Step into the realm of contemporary sophistication with "The Towers." A grandiose modern lobby greets visitors, setting the tone for an unparalleled professional experience. The meticulously designed interiors exude refinement and class, elevating the workplace ambiance to new heights of prestige.

Convenient Accessibility: Convenience is paramount at "The Towers." Situated in close proximity to the Long Island Rail Road (LIRR) station, a mere 20-minute commute to Manhattan, accessibility is unrivaled. With ample parking available on both ground and subterranean levels, commuting is streamlined for tenants and visitors alike.



ROZITA SOOMEKH

Licensed Real Estate Broker

Rozita.Soomekh@elliman.com

516.205.2279



AVAILABLE UNITS



Available :
Jan. 1, 2025

SUITE 204
Approx. 1132 RSF

+ \$3.75/Mo for UTS
\$ 3,680/Mo

Available : NOW

SUITE 300A
Approx. 921 RSF

+ 3.75/SF for UTS
\$ 3,070/Mo

Available : NOW

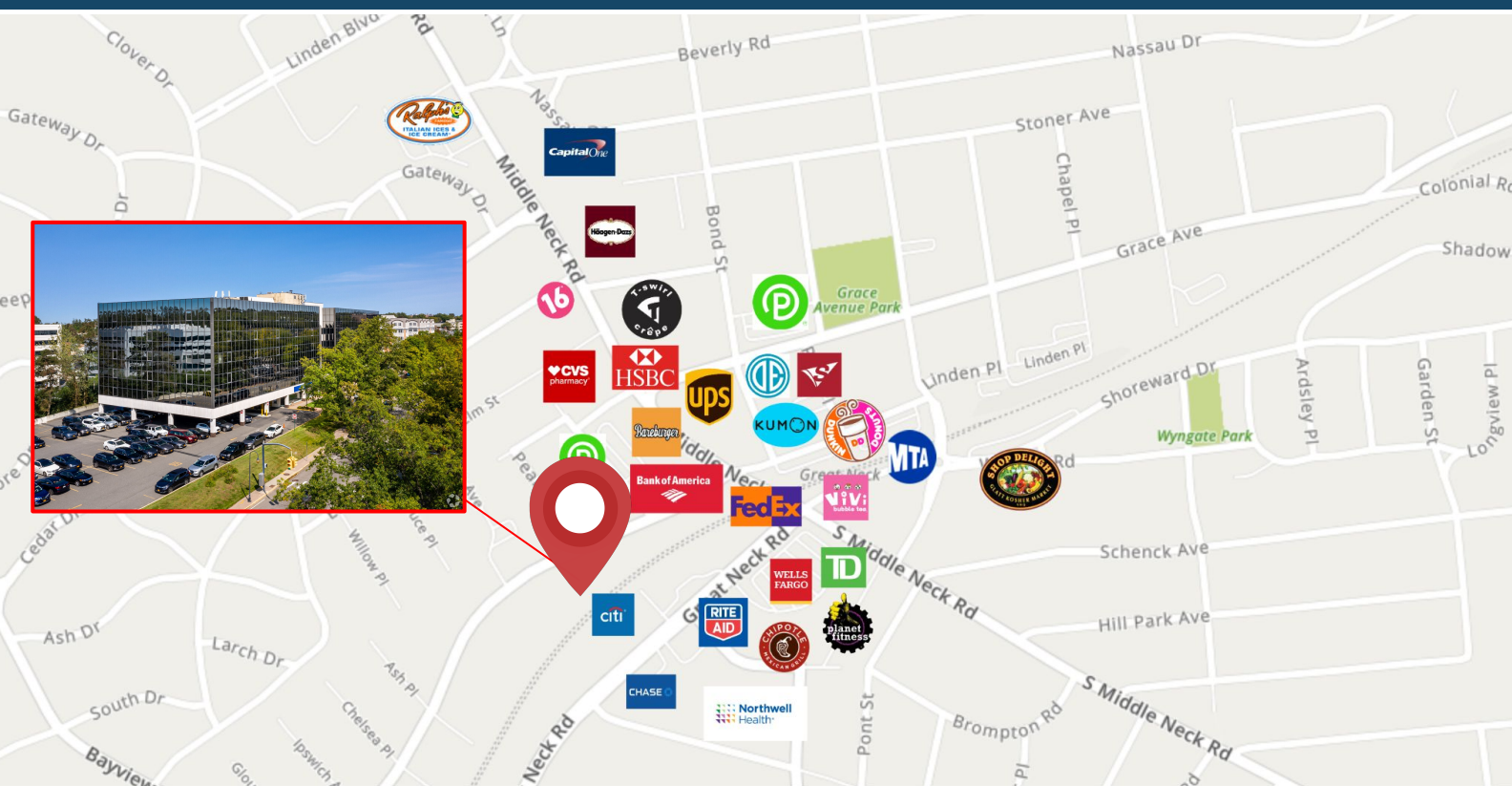
SUITE 303
Approx 1,448 RSF

+ 3.75/SF for UTS
\$ 4,766/Mo

Available :
Feb. 1, 2025

SUITE 413
Approx 880

+ 3.75/SF for UTS
\$ 2,933/Mo



OTHER NOTABLE BUSINESSES IN THE AREA



A Culinary Haven: Indulge in the culinary delights available within the confines of "The Towers." A chic cafe nestled within the premises ensures that tenants have access to gourmet refreshments and delectable treats without ever needing to venture far. Convenience meets epicurean satisfaction, creating an environment conducive to productivity and satisfaction.

Strategic Locale: Strategically positioned amidst a bustling commercial hub, "The Towers" provides proximity to a myriad of amenities. From eateries and cafes to banks and public transport options, every necessity is within arm's reach. This strategic locale not only enhances convenience but also fosters a vibrant and dynamic professional ecosystem.

Unmatched Accessibility: Empowering tenants with unparalleled flexibility, "The Towers" offers round-the-clock access to its facilities. Whether it's early morning meetings or late-night collaborations, tenants enjoy the freedom to operate on their schedules, enhancing productivity and accommodating diverse work styles.

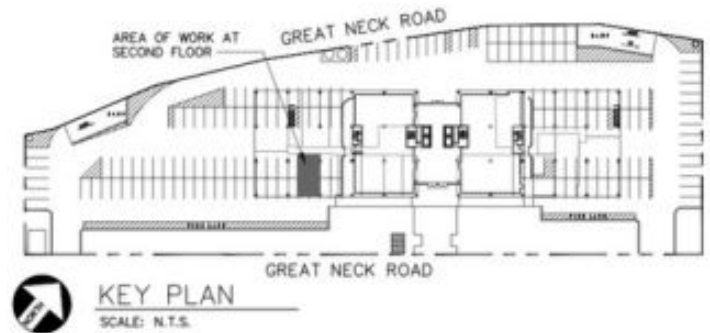
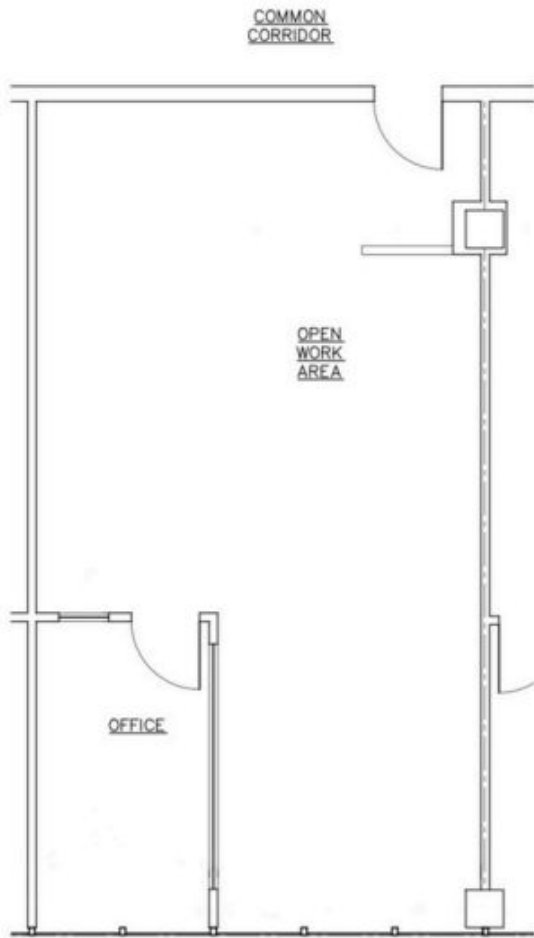
Exceeding Manhattan Standards: In a league of its own, "The Towers" sets a new benchmark for office spaces, rivaling even the most esteemed establishments in Manhattan. Its combination of opulent amenities, strategic location, and unmatched accessibility elevates it to the pinnacle of Class A office environments.

Experience the epitome of professional excellence at **"The Towers."** Elevate your business to new heights within this prestigious establishment, where every detail is meticulously crafted to cater to the needs of discerning professionals.

SUITE 204

\$ 39/SF + \$ 3.75 for UTS
Approx. 1,132 RSF

Available : Jan. 1 ,2025



 THE
ROZITA
SOOMEKH
TEAM at Douglas Elliman
Real Estate

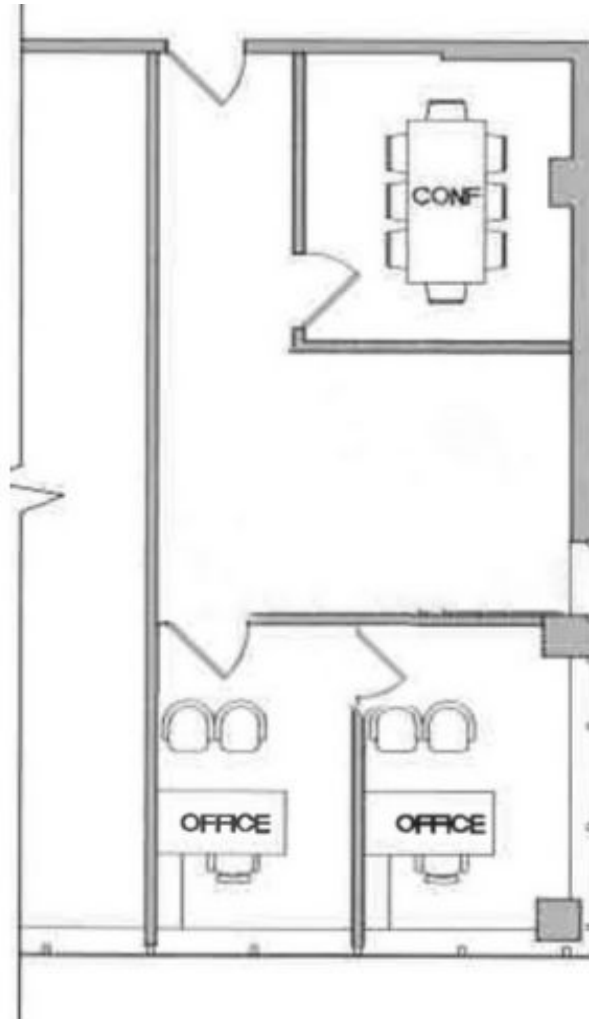
ROZITA SOOMEKH
Licensed Real Estate Broker
Rozita.Soomekh@elliman.com
516.205.2279



SUITE 300A

\$ 40/SF + 3.75/SF for UTS

Approx. 921 RSF



ROZITA SOOMEKH

Licensed Real Estate Broker

Rozita.Soomekh@elliman.com

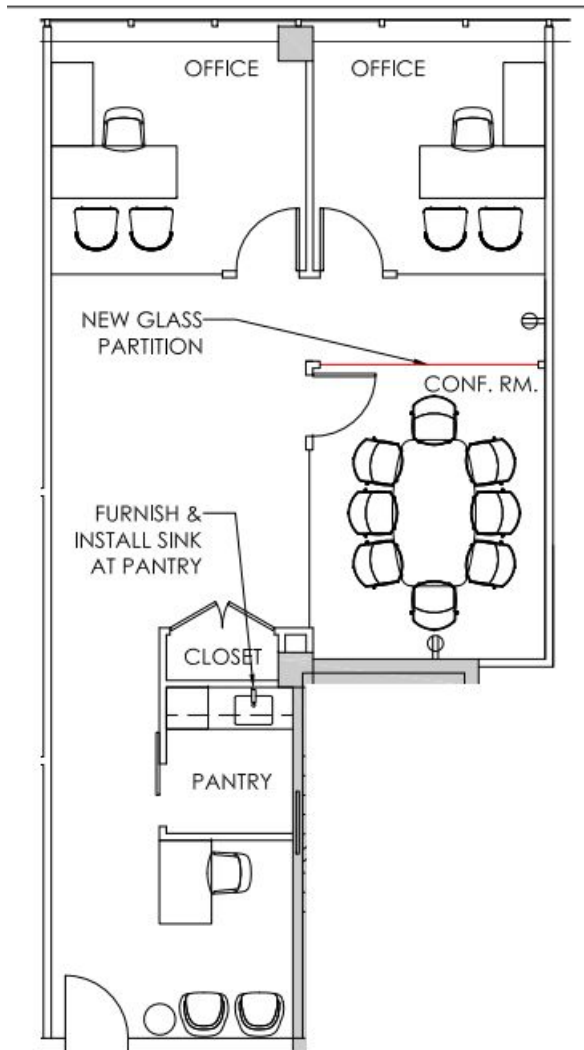
516.205.2279



SUITE 303

\$ 39.50/SF + 3.75/SF for UTS

Approx. 1,448 RSF



- Wet Pantry
- 2 Offices w/ Glass
- Conference Room w/ Glass Partition



ROZITA SOOMEKH

Licensed Real Estate Broker

Rozita.Soomekh@elliman.com

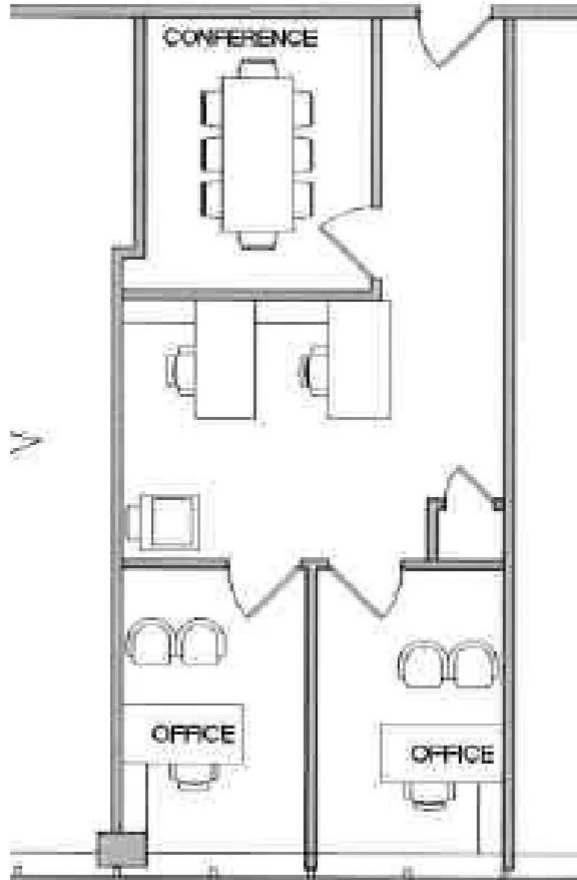
516.205.2279



SUITE 413

Available : Feb. 1 ,2025

\$ 40/SF + 3.75/SF for UTS
Approx. 880 RSF



- Conference Room
- 2 Offices
- Work Stations



ROZITA SOOMEKH
Licensed Real Estate Broker
Rozita.Soomekh@elliman.com
516.205.2279



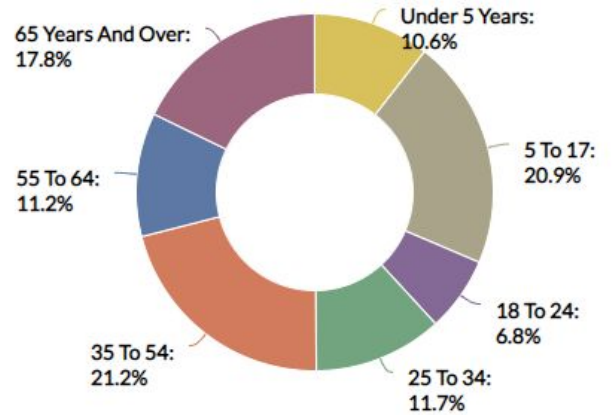
GREAT NECK

NEW YORK



Great Neck is a region on Long Island, New York, that covers a peninsula on the North Shore and includes 9 villages, such as the villages of Great Neck, Great Neck Estates, Great Neck Plaza, Kings Point, and Russell Gardens, and a number of unincorporated areas, as well as an area south of the peninsula near Lake Success and the border territory of Queens.

Age Demographic



TOTAL POPULATION

±11,000

MEDIAN HOUSEHOLD INCOME



SCAN TO VIEW
ALL OUR LISTINGS

