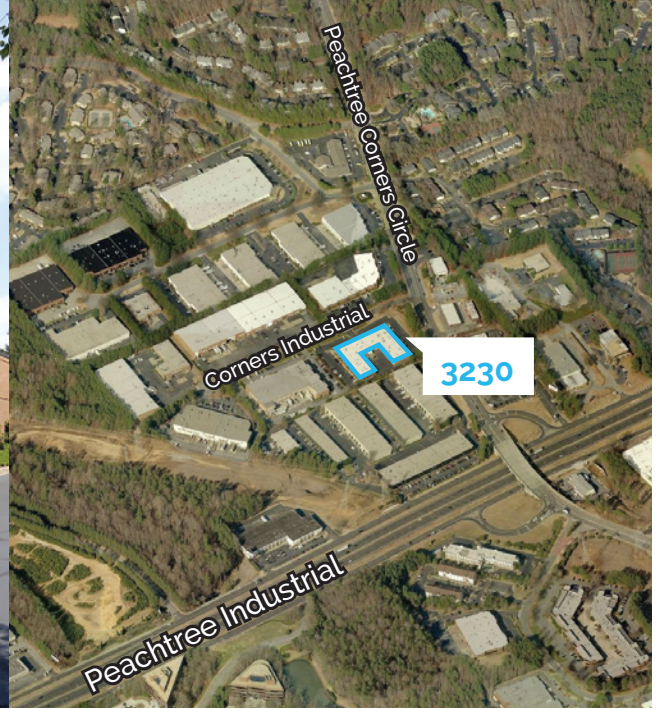


# 3230 PEACHTREE CORNERS CIRCLE

Norcross, GA 30092

## CORNERS WEST BUSINESS PARK



### BUILDING INFORMATION

Property Type:	Flex
Total Building Size:	39,413 SF
Available Size:	5,995 SF
Office Size:	5,048 SF
Loading Doors:	1 Grade-level
Clear Height:	14'
Sprinkler:	Wet System



**Tripp Ausband**  
770.825.3391  
tausband@seefriedproperties.com

**Joseph Kriss**  
678.904.1910  
josephk@seefriedproperties.com

**Doug Smith**  
678.904.1919  
dougs@seefriedproperties.com

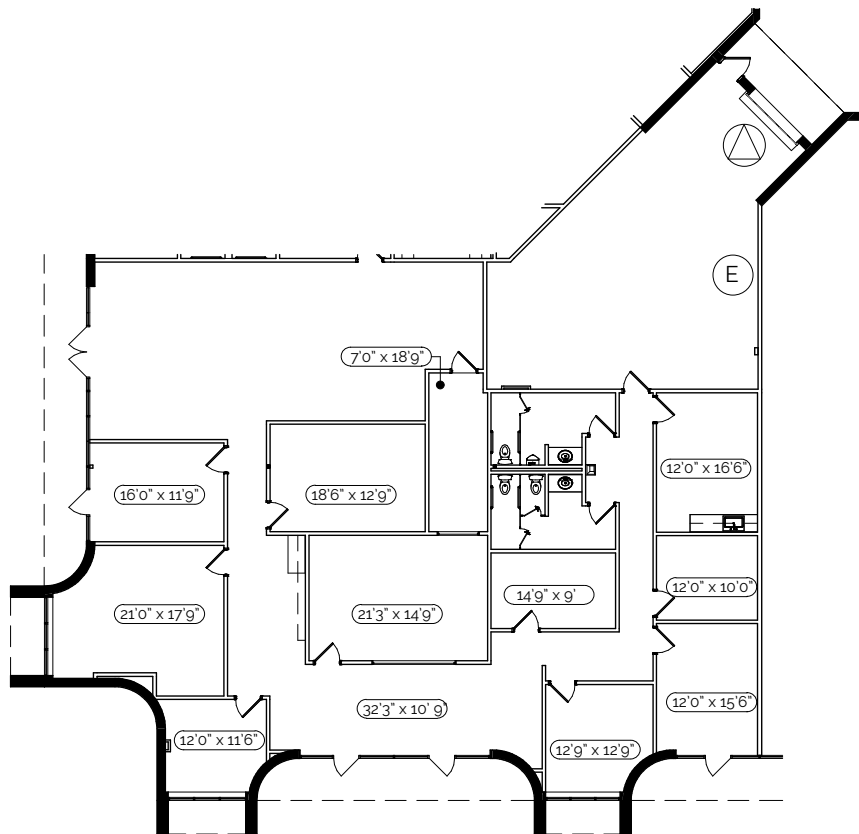
**Seefried Industrial Properties**  
3333 Riverwood Parkway, Suite 200 | Atlanta, GA 30339  
404.233.0204 | www.seefriedproperties.com

LEASED BY:  
 **SEEFRIED**  
INDUSTRIAL PROPERTIES

OWNED BY:  
 **GID**

No guarantee, warranty or representation, express or implied, is made as to the accuracy of the information contained herein, and same is submitted subject to errors, omissions, change of price, rental or other conditions, or withdrawal without notice.

# SUITE H – 5,995 SF



**Tripp Ausband**  
770.825.3391  
tausband@seefriedproperties.com

**Joseph Kriss**  
678.904.1910  
josephk@seefriedproperties.com

**Doug Smith**  
678.904.1919  
dougs@seefriedproperties.com

**Seefried Industrial Properties**  
3333 Riverwood Parkway, Suite 200 | Atlanta, GA 30339  
404.233.0204 | www.seefriedproperties.com

LEASED BY:  
 **SEEFRIED**  
INDUSTRIAL PROPERTIES

OWNED BY:  
 **GID**