



KINGSLAND CROSSING

Office Condos & Retail For Sale / 30625 Kingsland Blvd / Brookshire TX 77423



1,225 SF - 20,000 SF AVAILABLE!

Located in South Katy at the intersection of Jordan Ranch Blvd and Kingsland Blvd in Brookshire, TX, Kingsland Crossing is a brand-new Office and Retail Community currently under construction. This 18-acre development features 23 office buildings and 1 retail building.

Units start at approximately 1,225 SF of highly efficient space, with options to expand up to 20,000 SF. Buildings are arranged in plexes but can also be purchased individually.

Kingsland Crossing offers business owners the freedom of property ownership, allowing them to make their own design selections and construction decisions.

CONTACT

JESSICA HUANG

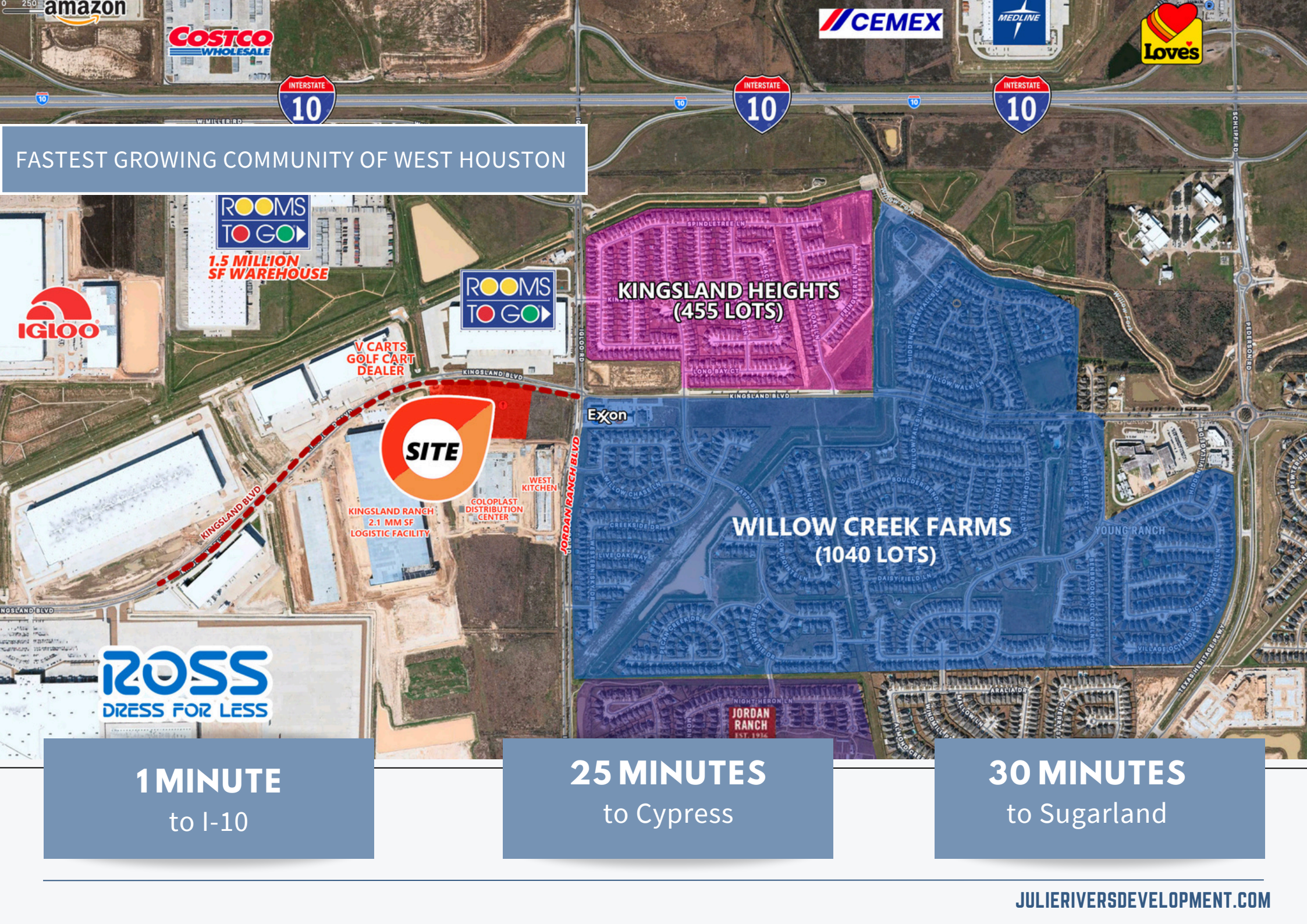
281.793.1832

jessicarealtyteam@gmail.com



HIGHLIGHTS





FASTEST GROWING COMMUNITY OF WEST HOUSTON

ROOMS TO GO
1.5 MILLION SF WAREHOUSE

IGLOO

V CARTS GOLF CART DEALER

ROOMS TO GO

KINGSLAND HEIGHTS (455 LOTS)

WILLOW CREEK FARMS (1040 LOTS)

KINGSLAND BLVD

KINGSLAND RANCH 2.1 MM SF LOGISTIC FACILITY

SITE

WEST KITCHEN

COLOPLAST DISTRIBUTION CENTER

JORDAN RANCH BLVD

ROSS
DRESS FOR LESS

1 MINUTE
to I-10

25 MINUTES
to Cypress

30 MINUTES
to Sugarland



**SURROUNDED BY
DENSE MASTER PLANNED
COMMUNITIES**

**MIGRATING TO WEST
HOUSTON**
ENERGY CLUSTERS,
INDUSTRIAL DISTRIBUTION
AND MANUFACTURING HUBS

SALE OPTIONS | 1,540 - 26,830 SF



AVAILABILITIES | RETAIL SPACE & PRICE

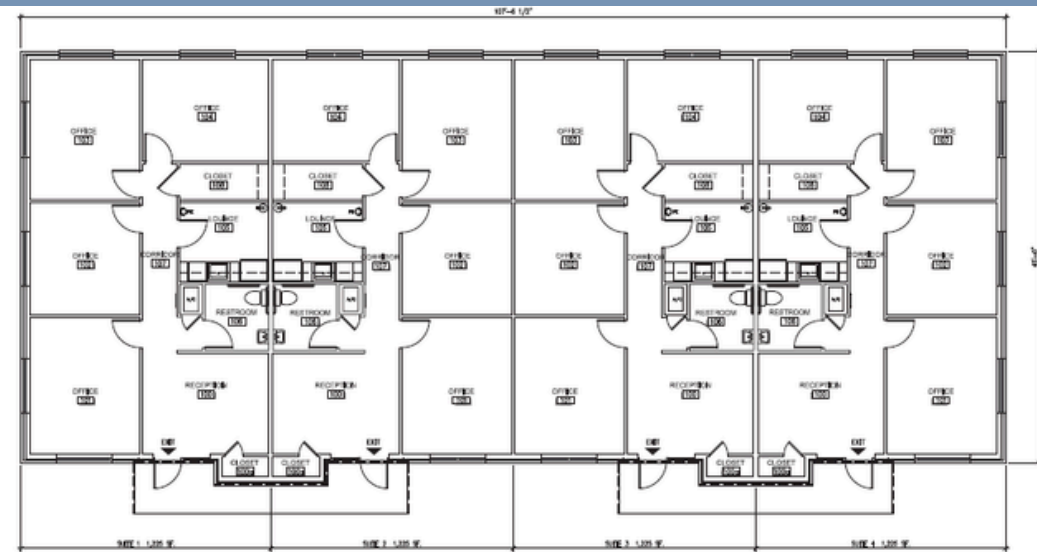
/ UNIT 100- 410 S TURNBERRY

\$955,000 - 3,372 SF

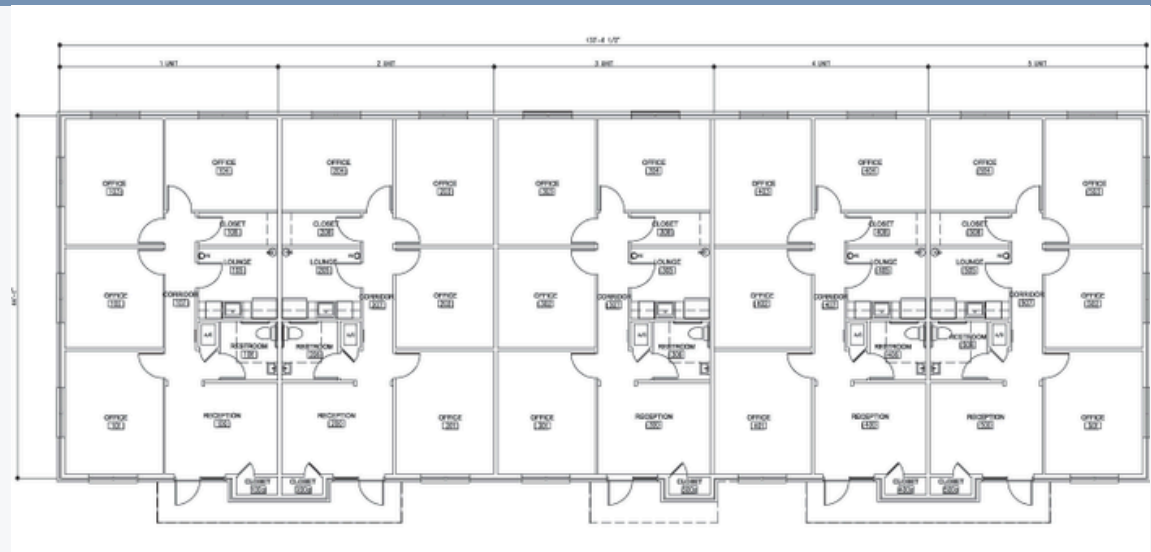
Property Tax: 2.764577%
POA Fee: \$3.8105 SF



AVAILABILITIES | OFFICE SPACE & PRICE



4 Unit BLDG- 4,900 SF



5 Unit BLDG- 6,121 SF

BUILDING 9

END UNIT

\$330,000 - 1,225 SF

MID UNIT

\$320,000 - 1,225 SF

Property Tax: 2.764577%
POA Fee: \$2,633 SF