



9 Joan Corwin Way

CHAPPAQUA NY 10514



HOULIHAN LAWRENCE
COMMERCIAL

9 Joan Corwin Way, aka 9 Hunts Lane, is a completely renovated office space in Downtown Chappaqua. The property is walking distance to the Metro North train station, as well as downtown shopping and dining. It also has convenient highway access to the Saw Mill River Parkway, the Taconic Parkway, and Route 120. Westchester County Airport is a mere 9-mile drive away.

The space offers modern and bright finishes. There is currently one suite available; Suite 150, which has 1,835 RSF. The unit is partially furnished and the tenant can decide whether they want use of the furniture or if they would like it removed. There is plenty of parking on-site.

Office Space For Lease

1,835
SQFT

\$28/SF MG
OFFERED AT



RICH APONTE
Associate Real Estate Broker

M 914.960.9148 O 914.798.4900
raponte@houlihanlawrence.com
richardaponte.houlihanlawrence.com



BARBARA R HUBER
Real Estate Salesperson

M 203.609.1401 O 914.798.4900
brhuber@houlihanlawrence.com
barbararhuber.houlihanlawrence.com



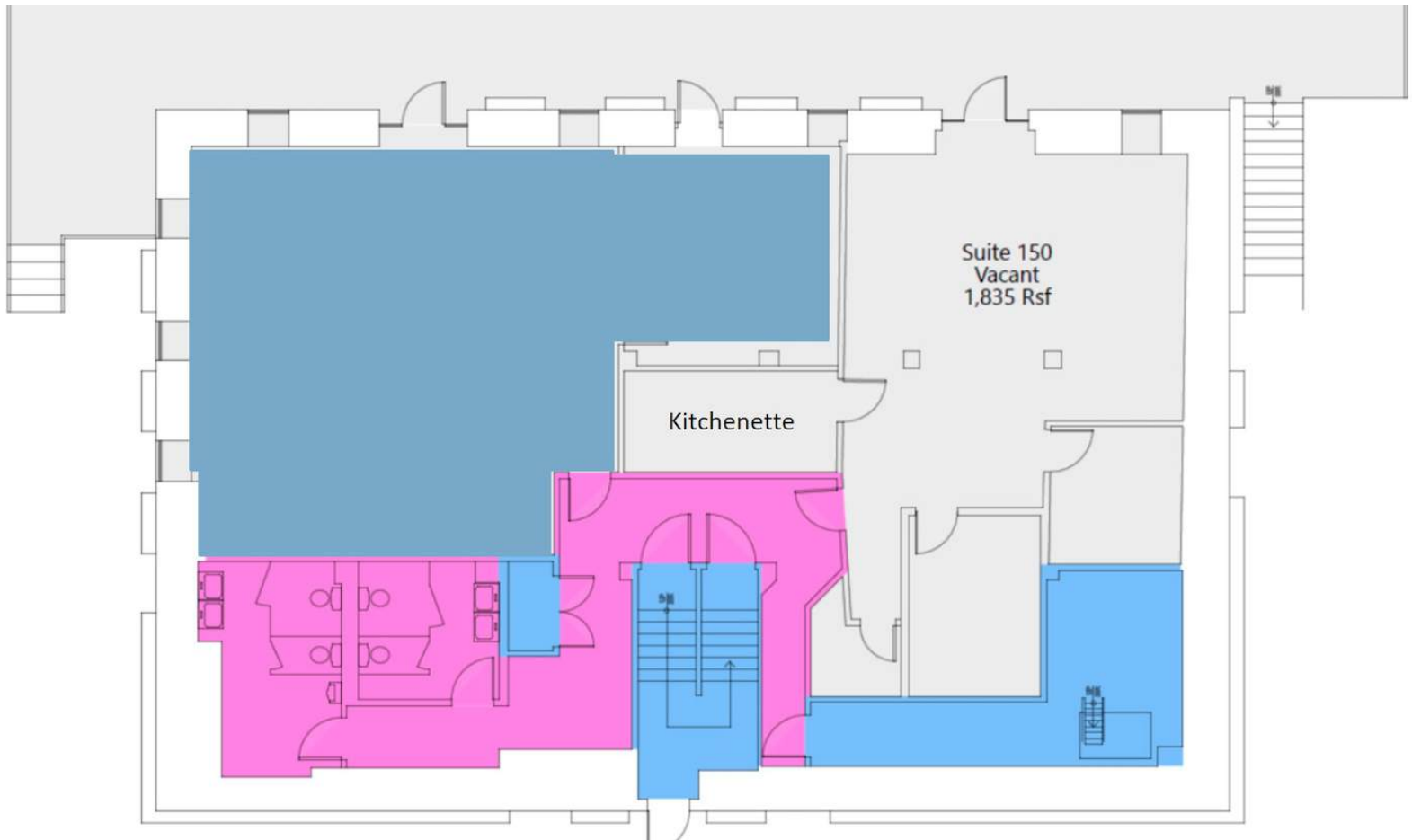
Highlights

- Office Space for Lease
- Asking \$28/SF MG
- One suite available: Suite 150 (1,835 RSF)
- Suite shall be delivered "AS IS"
- Minimum 2-year lease term on unaltered space
- Any alteration on space will require a minimum 5-year lease term
- Newly renovated office space
- Ample on-site parking
- Walking distance to train and downtown dining and shopping
- Less than 10 miles to nearby Westchester County Airport



HOULIHAN LAWRENCE
COMMERCIAL

Floor Plan



Discover Chappaqua



16,652
POPULATION

33
MILES TO NYC

18.7
SQUARE MILES



HAMLET OF CHAPPAQUA

Chappaqua is a Hamlet in the Town of New Castle, which also includes the Hamlet of Millwood. It is located 9 miles north of White Plains, and is 33 miles from mid-Manhattan.

A feeling of privacy is maintained in this well planned residential community. The beauty of natural lakes and rolling, wooded hills gives Chappaqua all the charm of a New England Village.

The comfortable Manhattan commute, the combination of sophistication and country flavor, and a lively schedule of cultural events and activities all make Chappaqua one of Westchester's most popular communities.

PARKS & RECREATION

The mission of the New Castle Recreation and Parks Department is to enhance the quality of life through sports, leisure, and other recreational experiences and to provide a safe environment that emphasizes fun and personal development through participation

and discovery at all ages. Enjoy 150 different recreation activities, a 550 acre park system and active community and art centers.

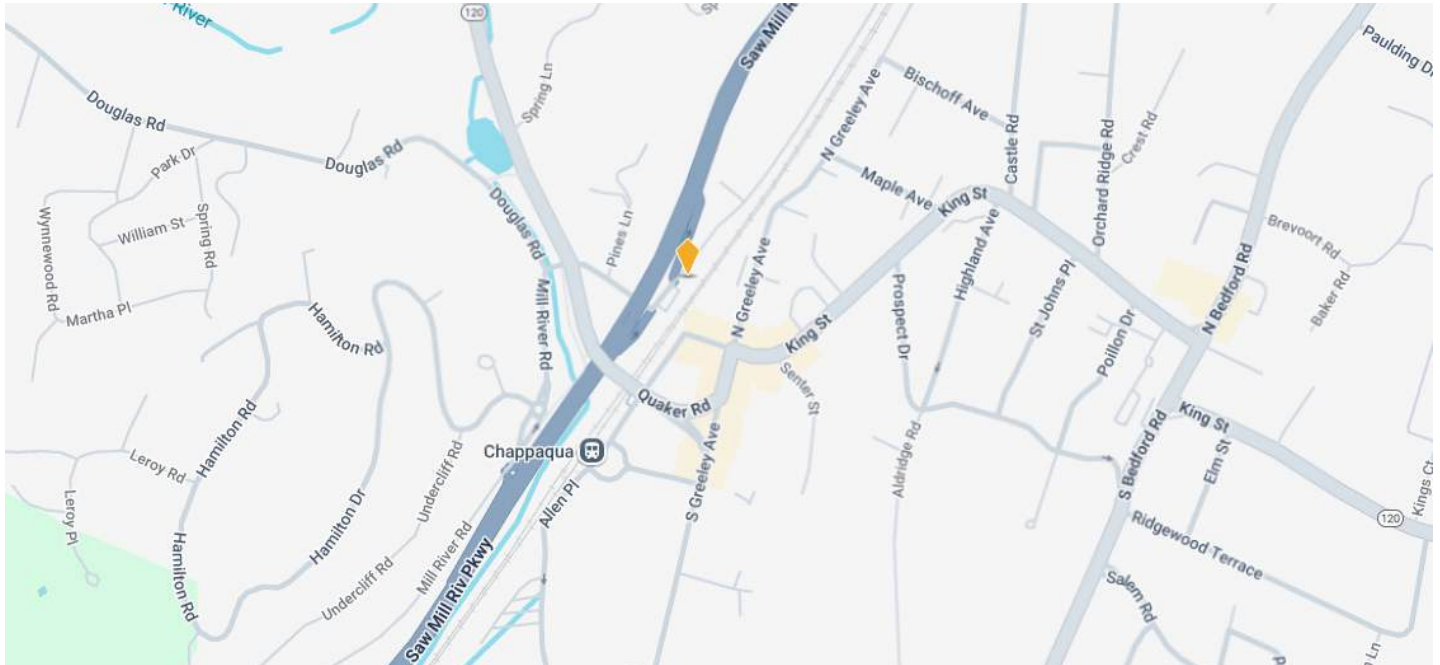
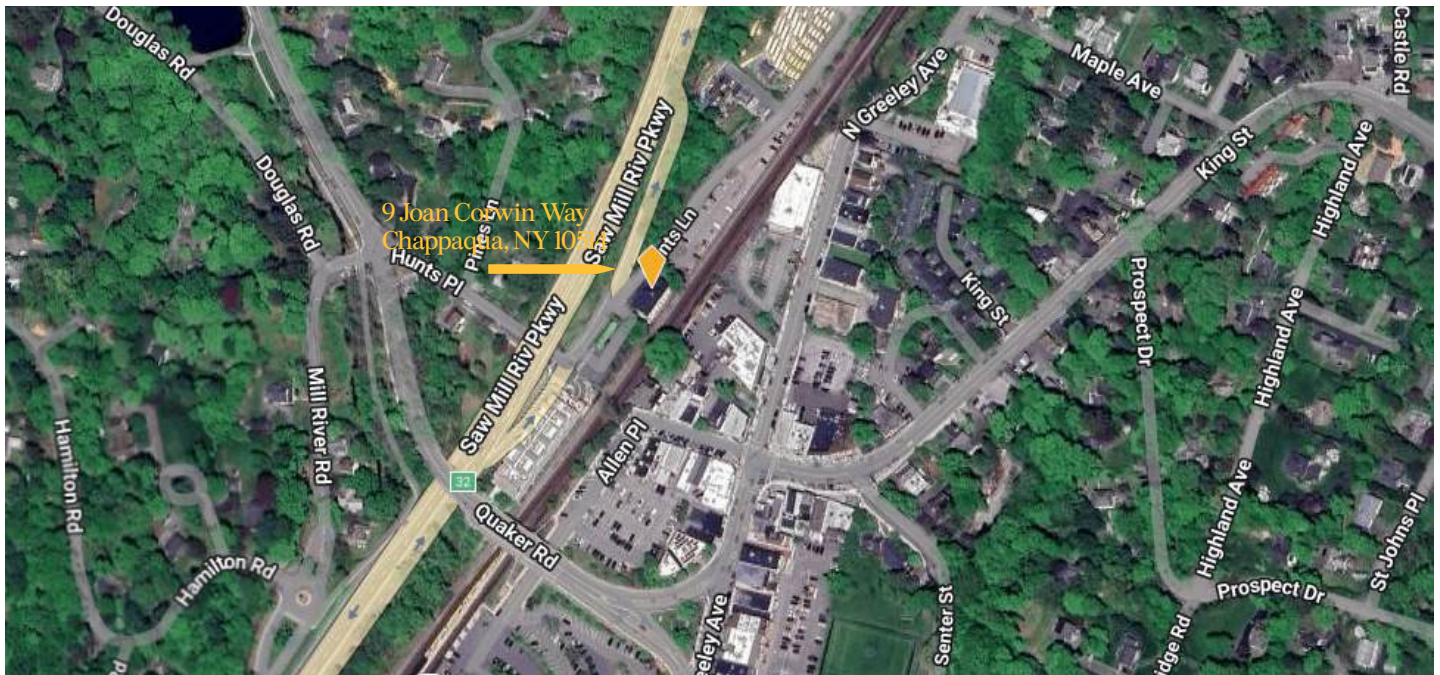
EDUCATION

The Chappaqua School District serves 5,437 households. It has three elementary schools, two middle schools and one high school. Education is one of the most important aspects of life in Chappaqua.

HOUSES OF WORSHIP

Include: Society of Friends (Quaker), St. Mary the Virgin (Episcopal), Community of the Reconciliation (Presbyterian), First Congregational Church of Christ, Lutheran Church of Our Redeemer, Church of Saint John and Saint Mary (Roman Catholic), Westchester Baptist Church, Temple Beth El (Reformed) and Bet Torah (Conservative).

Aerial View & Regional Map



The information contained in this Offering Memorandum is confidential, furnished solely for the purpose of review by a prospective purchaser of certain information relating to the property mentioned herein (the "Property"), and is not to be used for any other purpose or made available to any other person without the prior written consent of HLC. The material is subject to errors and omissions and based on part upon information supplied by sources deemed reliable.



HOULIHAN LAWRENCE
COMMERCIAL