

NEWMARK

107 N 1ST ST

BOUTIQUE FULL FLOOR OFFICE OPPORTUNITIES | ROOFTOP AVAILABLE



Availabilities Overview

- » Entire 2nd Floor: **3,500 RSF**
- » Entire 3rd Floor: **3,500 RSF**
- » Entire 4th Floor: **3,500 RSF**
– *must be leased with 5th floor/PH for 4,600 RSF total*
- » Entire 5th Floor/PH: **1,100 RSF** (+ 2,400 RSF private roof deck)
– *must be leased with 4th Floor for 4,600 RSF total*

Possession

Immediate

Term

Negotiable

Asking Rent

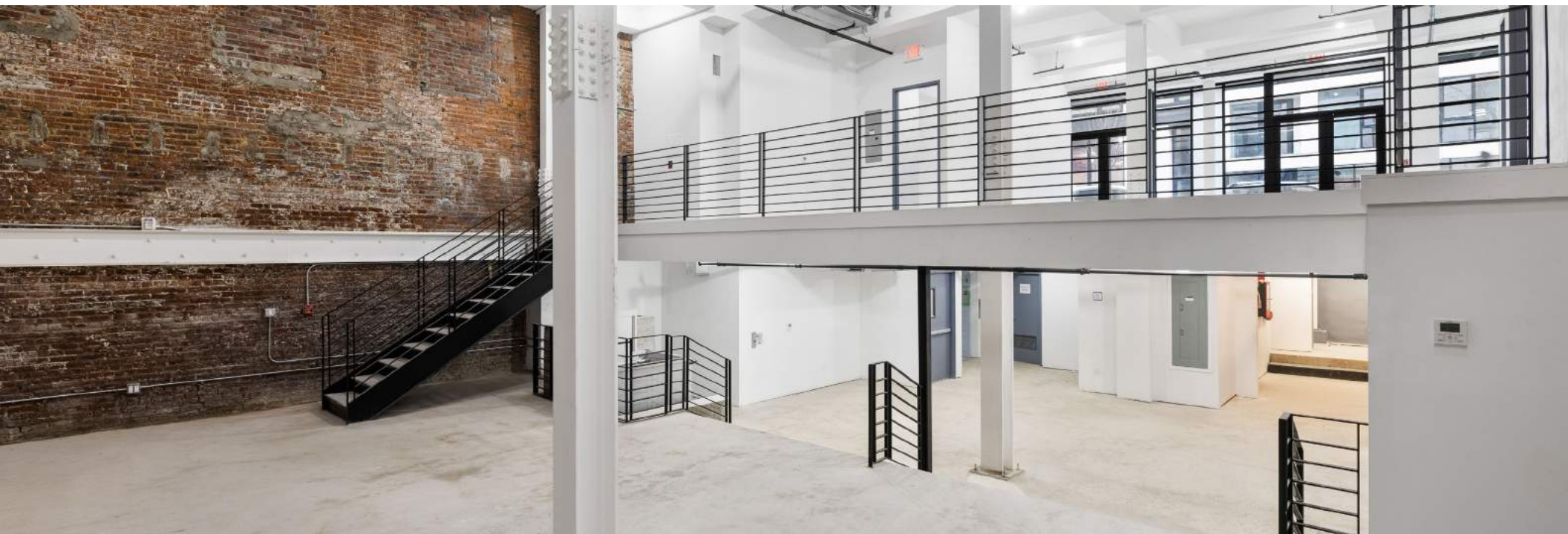
Inquire



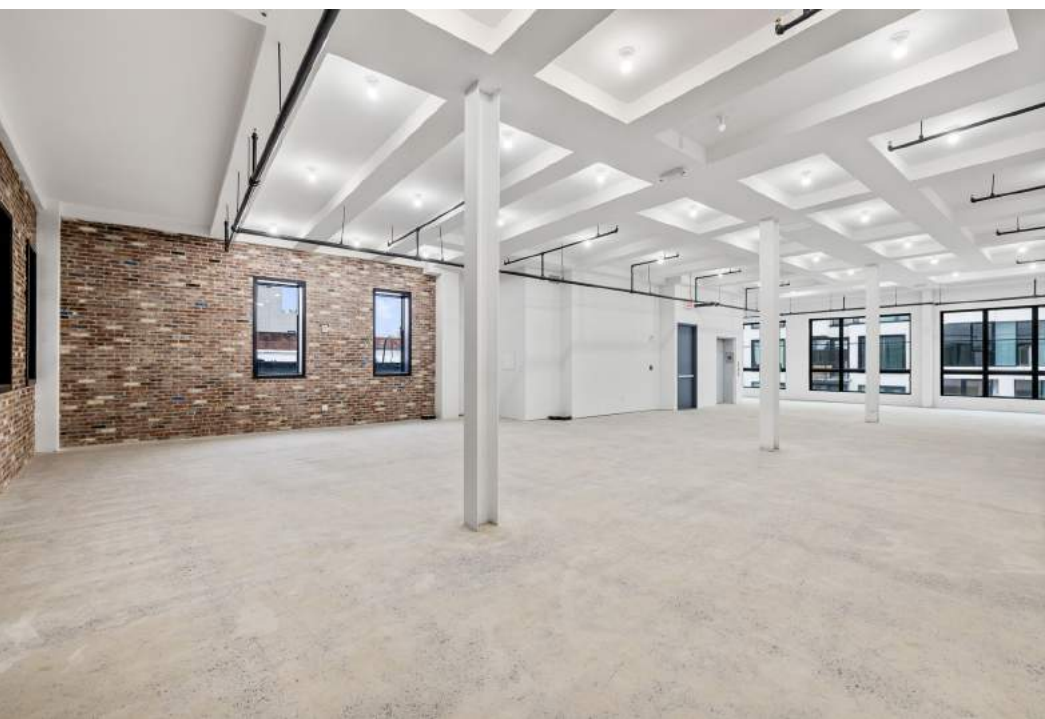
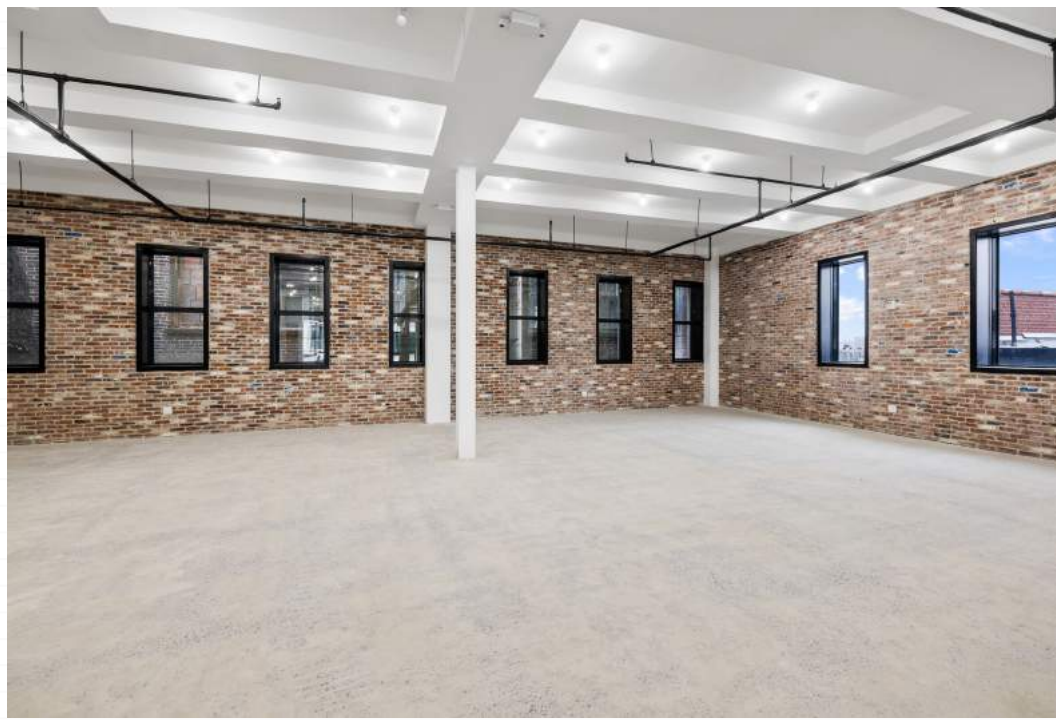
Highlights

- » New construction, boutique office project in Prime North Williamsburg
- » Full floor availabilities with good natural light and high ceilings
- » Unique 4,600 RSF Penthouse offering on the top two floors of the building with private landscaped/covered roof deck
- » Newly completed high-end, private restrooms on each floor
- » Office lobby with new elevator completed

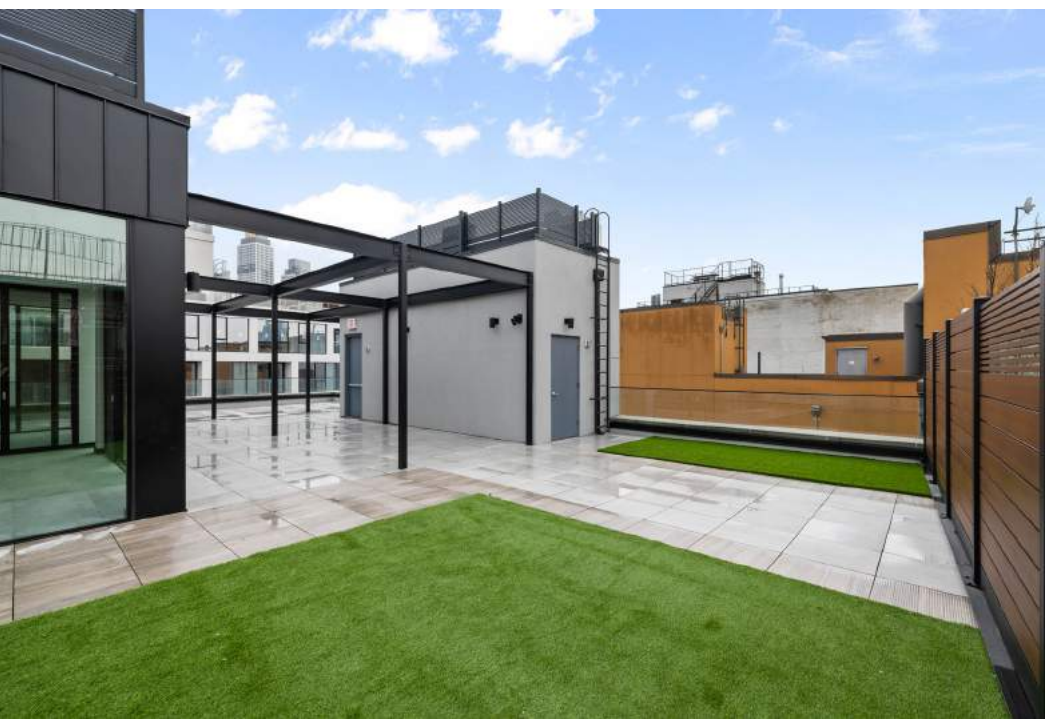
Duplex Retail Availability



Interior

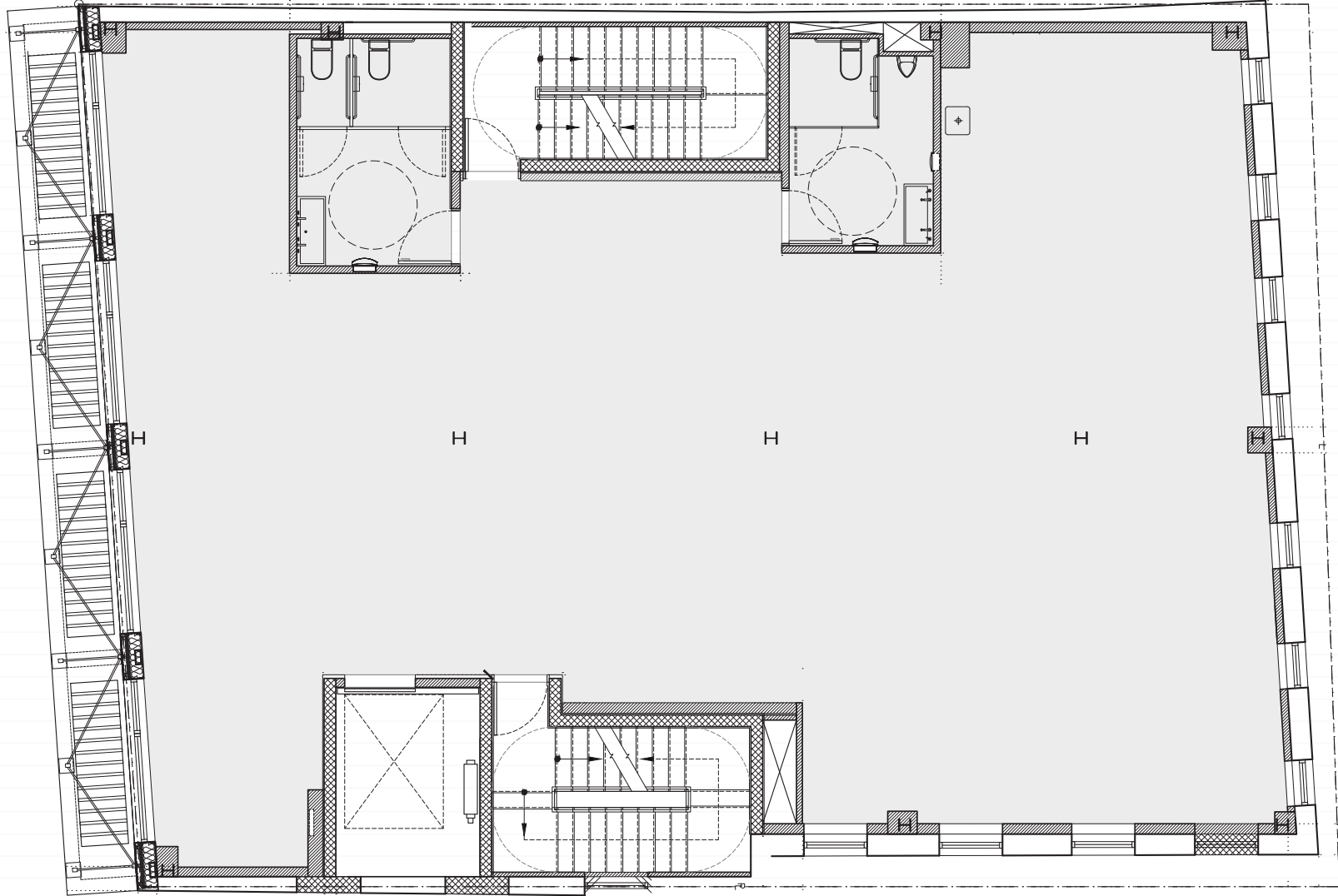


Rooftop Penthouse



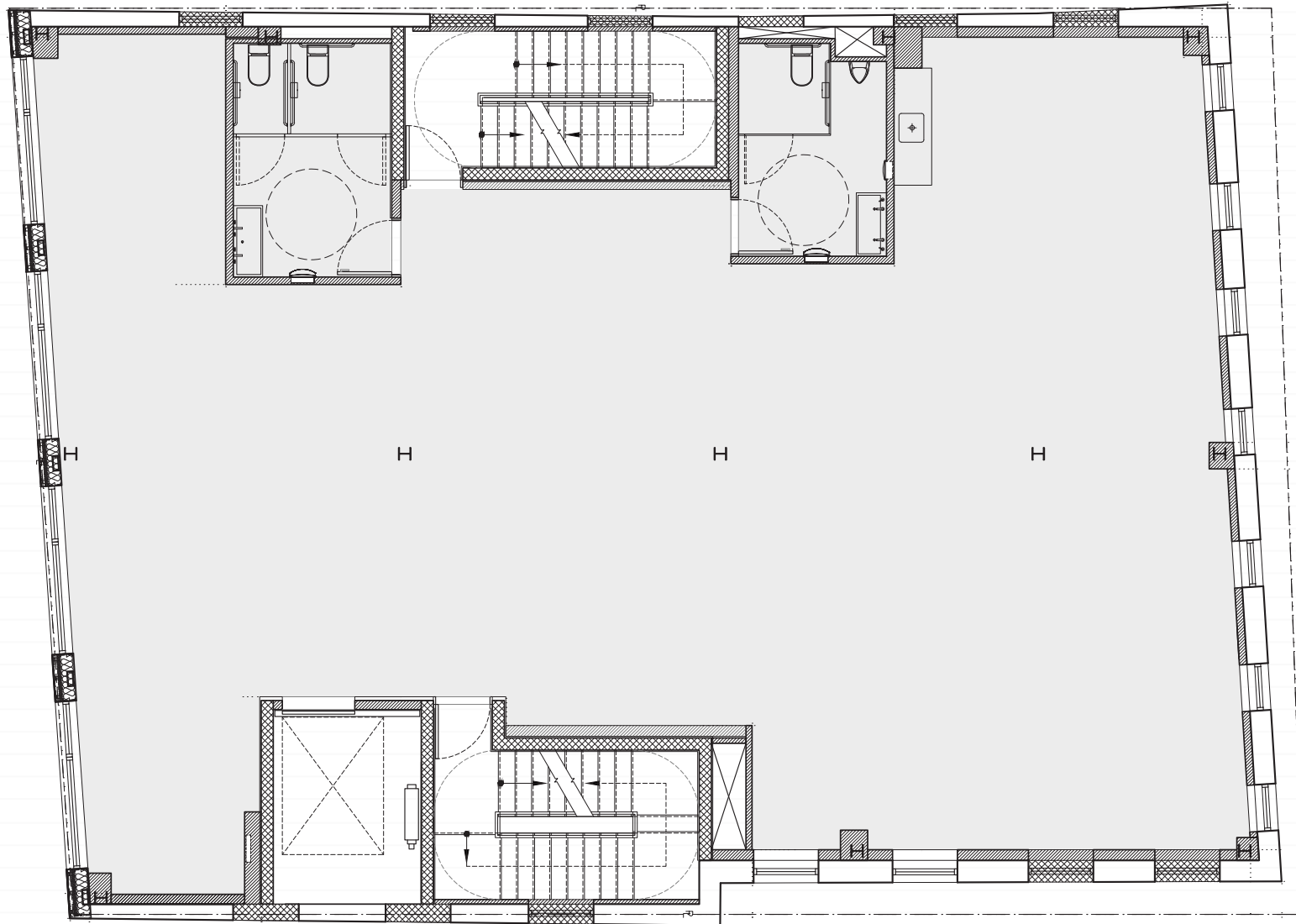
2nd Floor Core Plan

Entire 2nd Floor: **3,500 RSF**



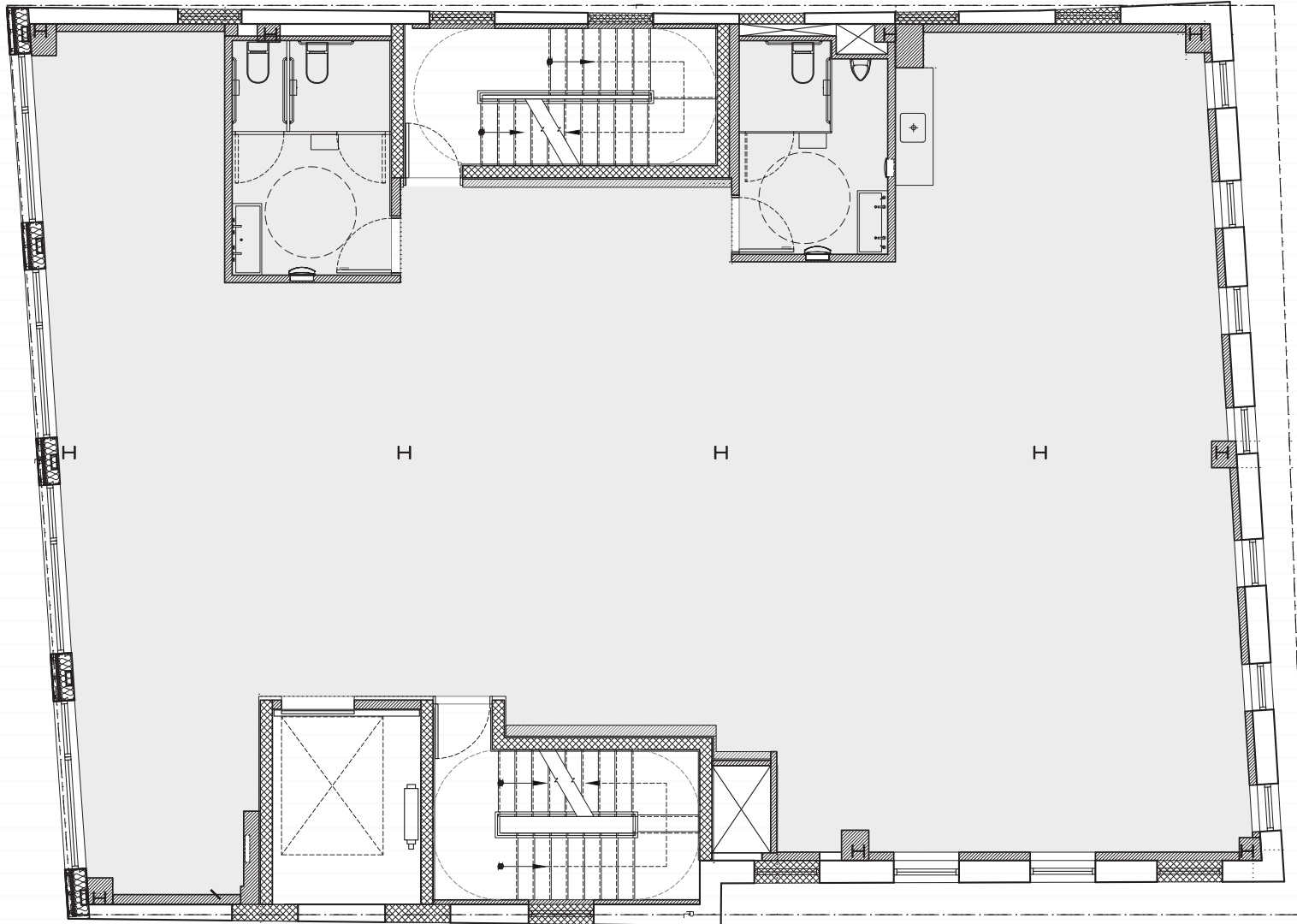
3rd Floor Core Plan

Entire 3rd Floor: **3,500 RSF**



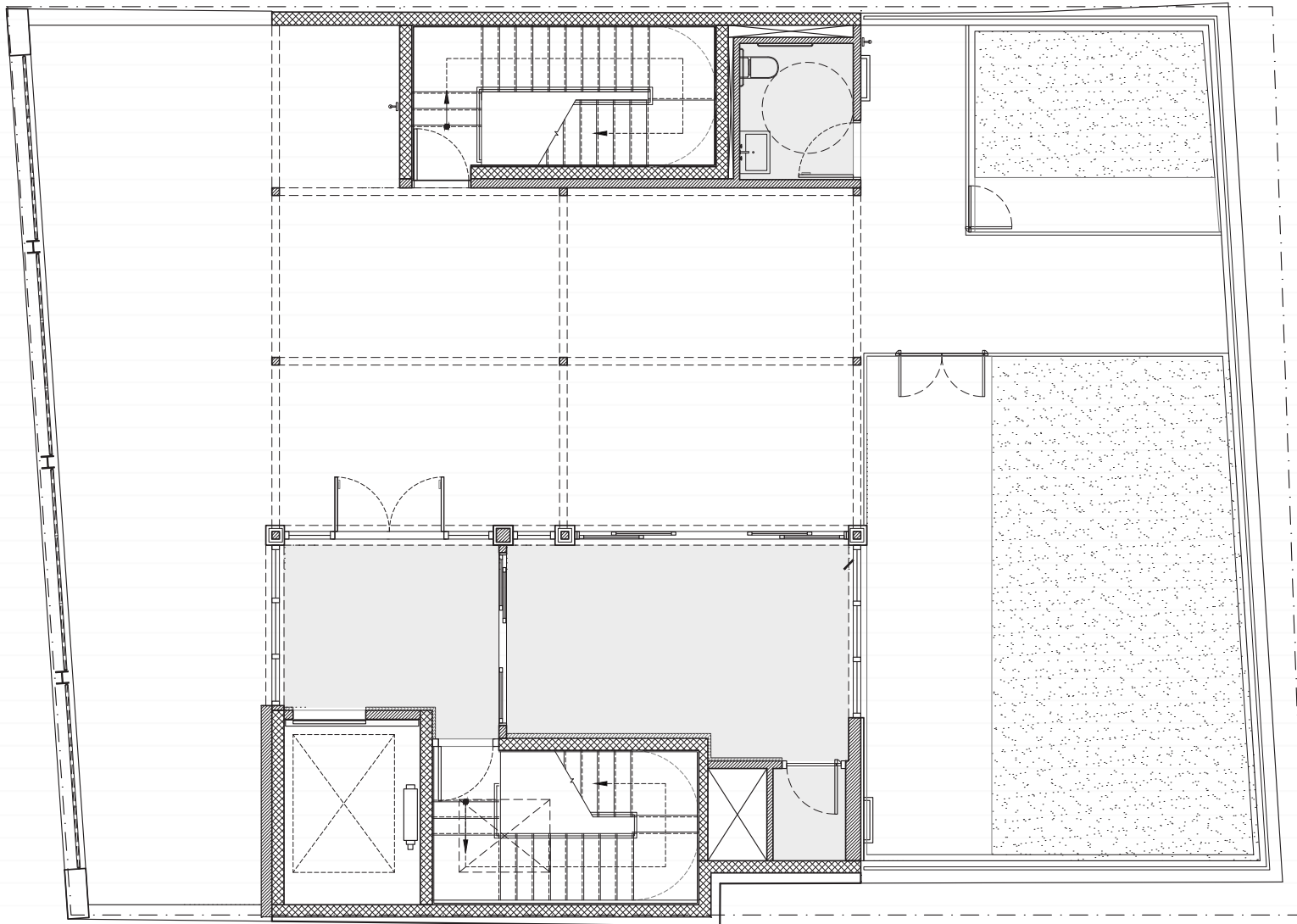
4th Floor Core Plan

Entire 4th Floor: **3,500 RSF** – *must be leased with 5th floor/PH for 4,600 RSF total*



5th Floor Core Plan

Entire 5th Floor: **1,100 RSF** – *must be leased with 4th floor for 4,600 RSF total*





107 N 1ST ST

NEWMARK

Office Inquiries

RYAN GESSIN
646-441-3725
ryan.gessin@nmrk.com

WILLIAM GROVER
212-372-2188
william.grover@nmrk.com

Retail Inquiries

MAI SHACHI
212-916-2927
mai.shachi@nmrk.com