

# FOR LEASE

111 CHINQUAPIN ROUND RD, ANNAPOLIS, MD 21401



Highly Visible Retail and  
Office Options Available

Laurie Murphy-Zuiderhof  
443.756.5102  
Laurie@hyattcommercial.com

Treva Ghattas  
301.991.6334  
treva@hyattcommercial.com



## HIGHLIGHTS

- Competitive Lease Rates
- On-Building Signage
- On-Site Parking
- Great Location and Access between West Street and Forest Drive
- Located in the heart of the Annapolis Design District
- Join Bright Lights and 84 Lumber

## OFFERING



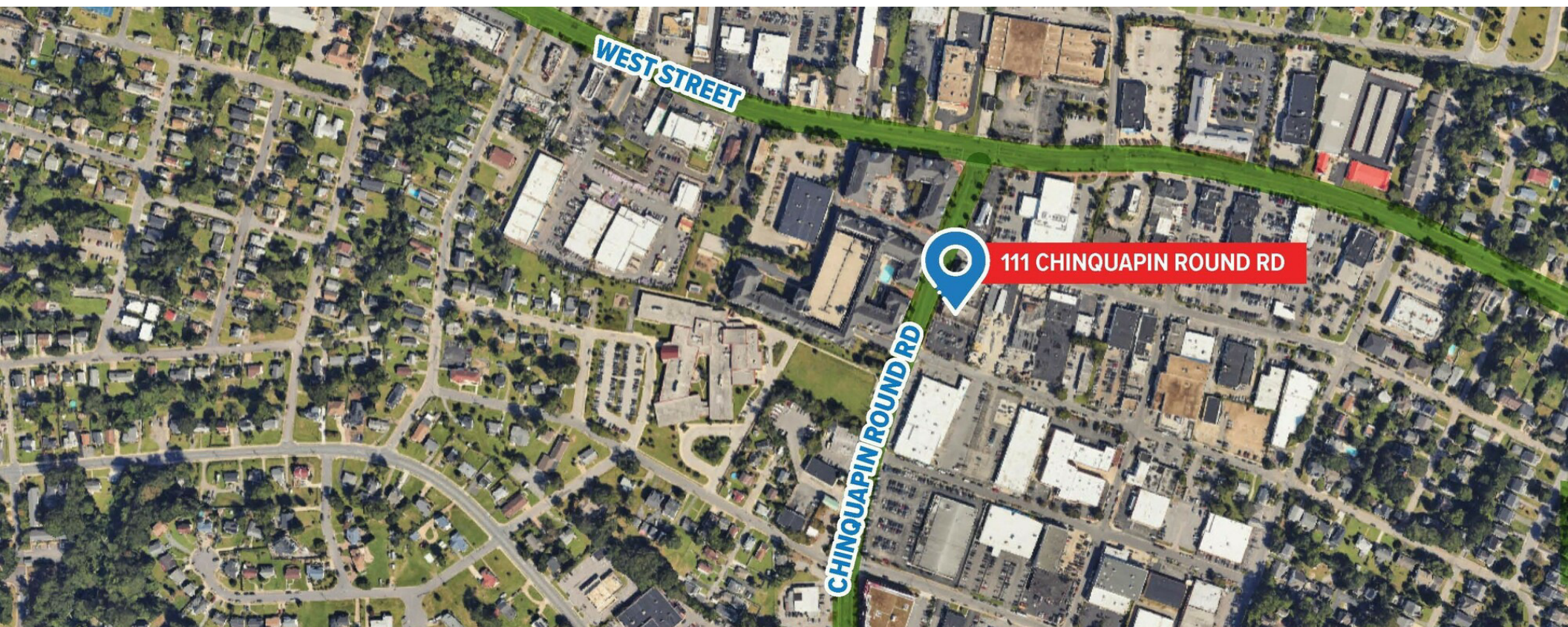
# FOR LEASE

## STOREFRONT RETAIL FOR LEASE

### SPACES

### SPACE SIZE

Suite 122	668 SF
Suite 124	3,461 SF
Suite 202	2,500 SF
Suite 203	985 SF
Suite 204	1,052 SF





## ADDITIONAL PHOTOS









\_\_\_\_\_



### LEGEND

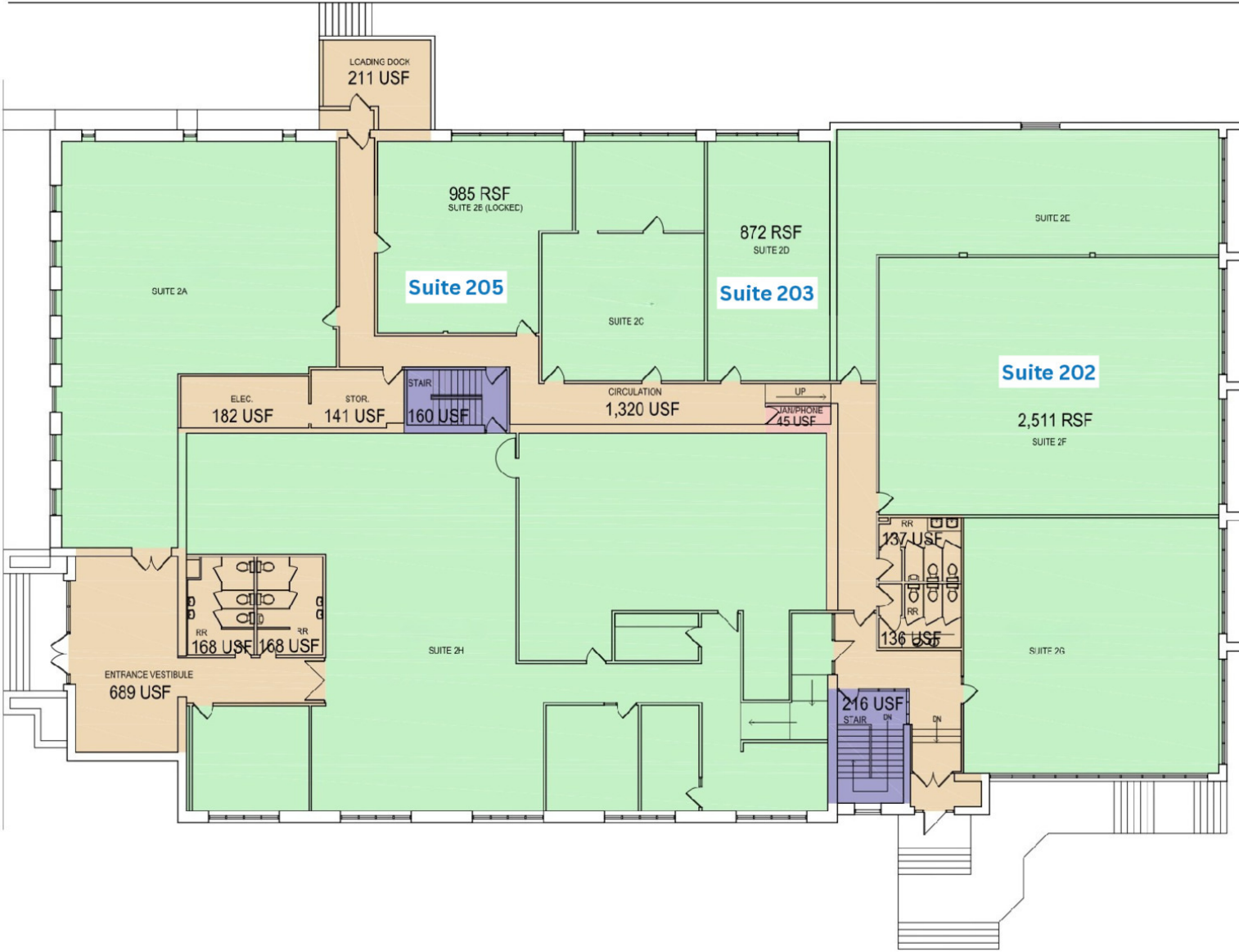
- |   |                       |
|---|-----------------------|
|  | OCCUPANT AREA         |
|  | VERTICAL PENETRATION  |
|  | BUILDING SERVICE AREA |
|  | OCCUPANT STORAGE      |

LOWER LEVEL CORE FACTOR: 29.39%







**111 Chinguapin Round Rd.**

LOWER LEVEL  
SCALE:  $\frac{1}{15}'' = 1'-0''$   
DATE: Jan 10, 2012



## LEGEND

- |   |                       |
|---|-----------------------|
|  | OCCUPANT AREA         |
|  | VERTICAL PENETRATION  |
|  | BUILDING SERVICE AREA |
|  | OCCUPANT STORAGE      |

UPPER LEVEL CORE FACTOR: 22.03%



# RETAILER MAP







## CONTACT

### HYATT COMMERCIAL

410.266.8800

2568A Riva Rd, Suite 300, Annapolis, MD 21401

### Laurie Murphy-Zuiderhof

443.756.5102

Laurie@hyattcommercial.com

### Treva Ghattas

301.991.6334

treva@hyattcommercial.com

While we have no reason to doubt the accuracy of any of the information supplied, we cannot, and do not, guarantee its accuracy. All information should be independently verified prior to a purchase or lease of the property. We are not responsible for errors, omissions, misuse, or misinterpretation contained herein and make no warranty of any kind, express or implied, with respect to the property or any other matters. The property is subject to price change or withdrawal without notice.