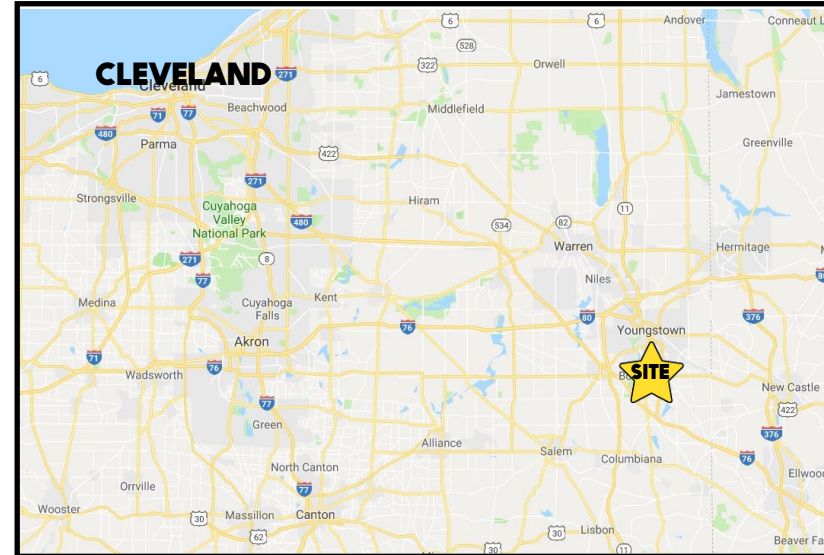


## LOCATION

810 Ron Park Place, Boardman, OH 44512



## HIGHLIGHTS

- Newly renovated medical office condo
- Large, first floor space with waiting room, large front desk area, private doctor office w/full bath and shower, and several exam rooms
- Lots of parking available

## TRAFFIC

Boardman Canfield Rd = 33,649 VPD

## CONTACT

**THERESA MORSE**

330.518.6082

tmorse@platzrealtygroup.com

Office: 330.757.4889 | Fax: 330.294.5622 | 3768 Boardman Canfield Rd, Canfield, OH 44406

[www.PLATZREALTYGROUP.com](http://www.PLATZREALTYGROUP.com)



Office: 330.757.4889 | Fax: 330.294.5622 | 3768 Boardman Canfield Rd, Canfield, OH 44406

[www.PLATZREALTYGROUP.com](http://www.PLATZREALTYGROUP.com)

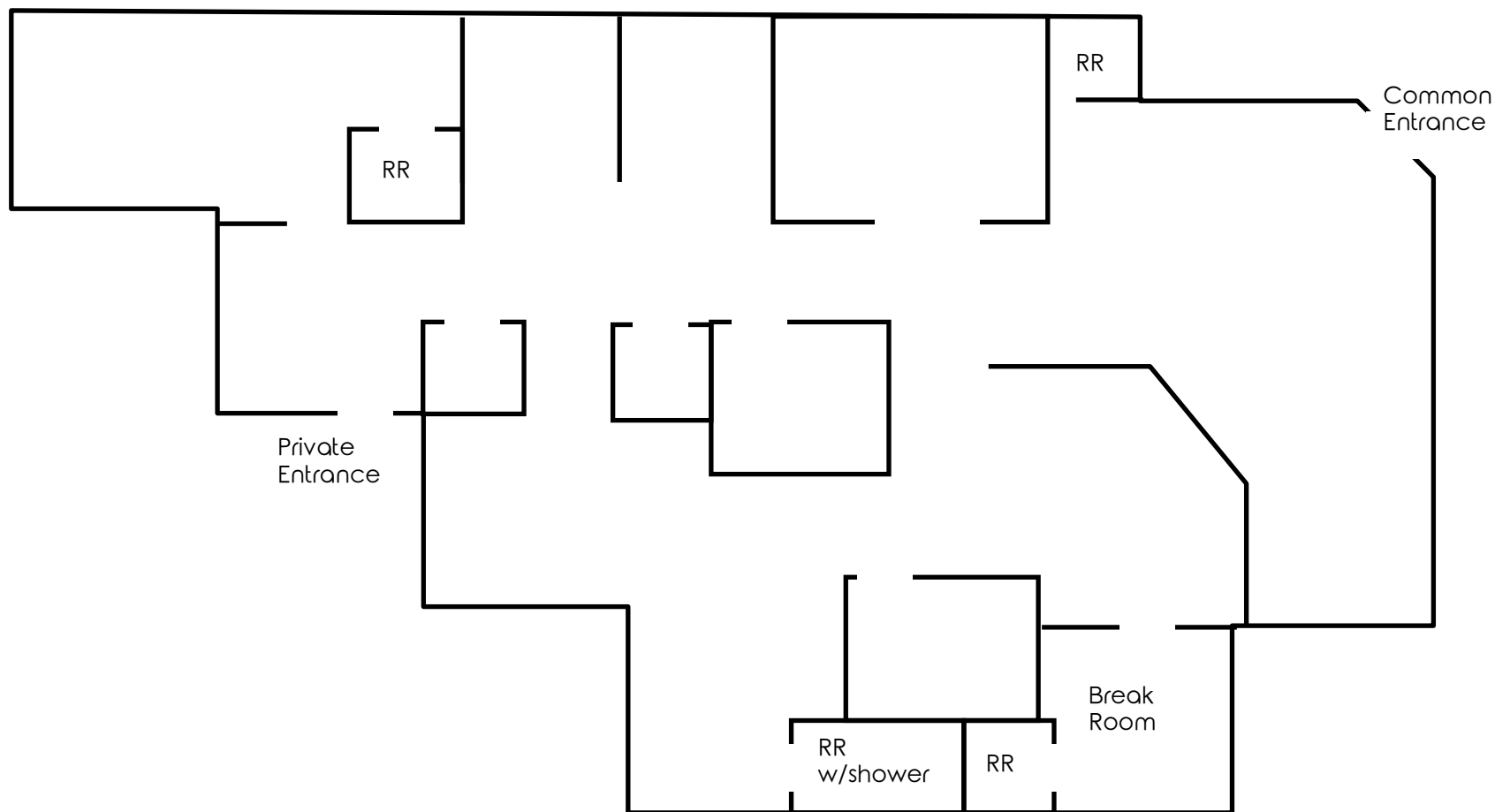
The information presented was obtained from sources believed to be true and reliable. The Platz Realty Group makes no warranties or guarantees to the accuracy of the information.



Office: 330.757.4889 | Fax: 330.294.5622 | 3768 Boardman Canfield Rd, Canfield, OH 44406

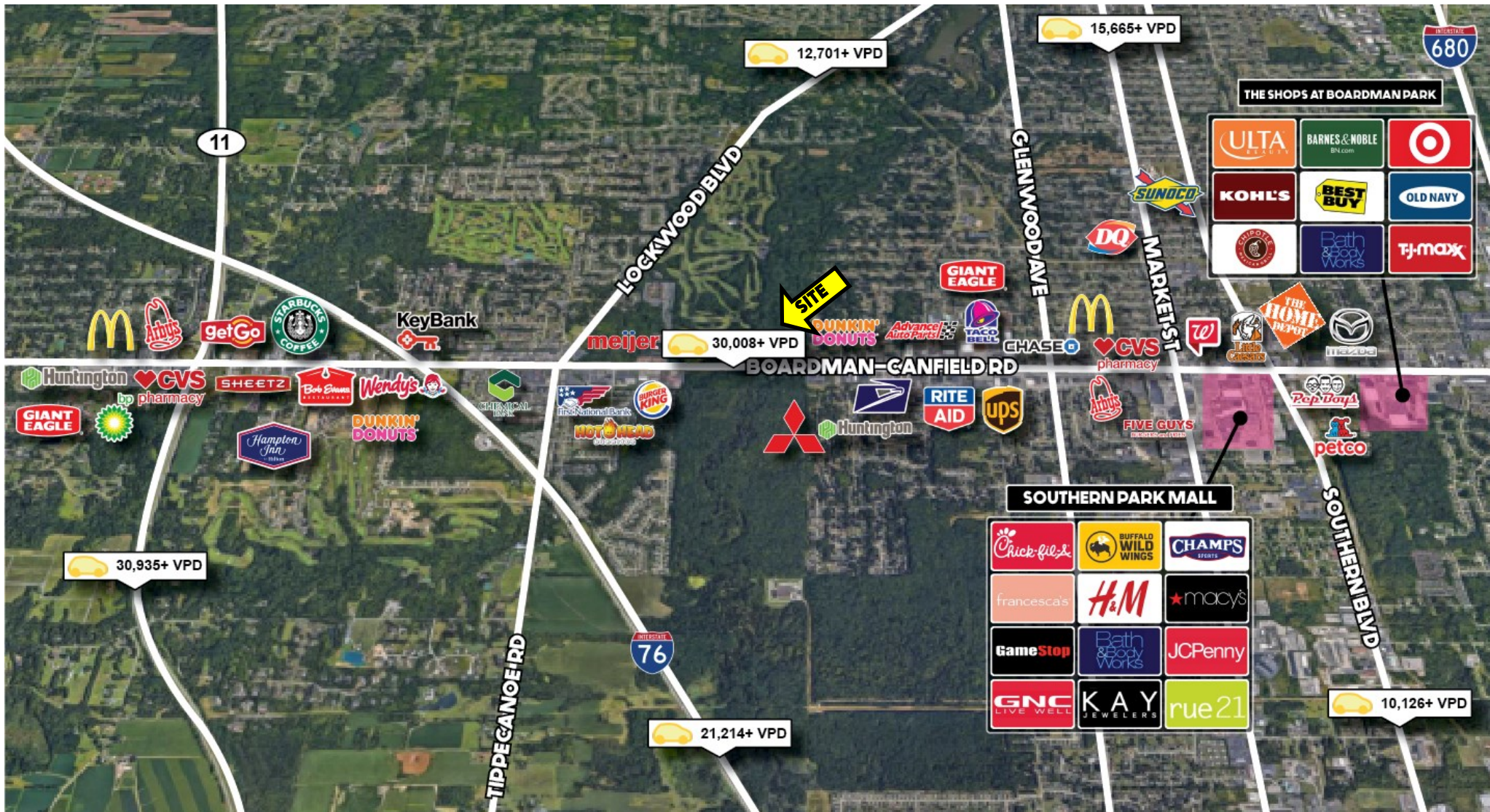
**[www.PLATZREALTYGROUP.com](http://www.PLATZREALTYGROUP.com)**

The information presented was obtained from sources believed to be true and reliable. The Platz Realty Group makes no warranties or guarantees to the accuracy of the information.



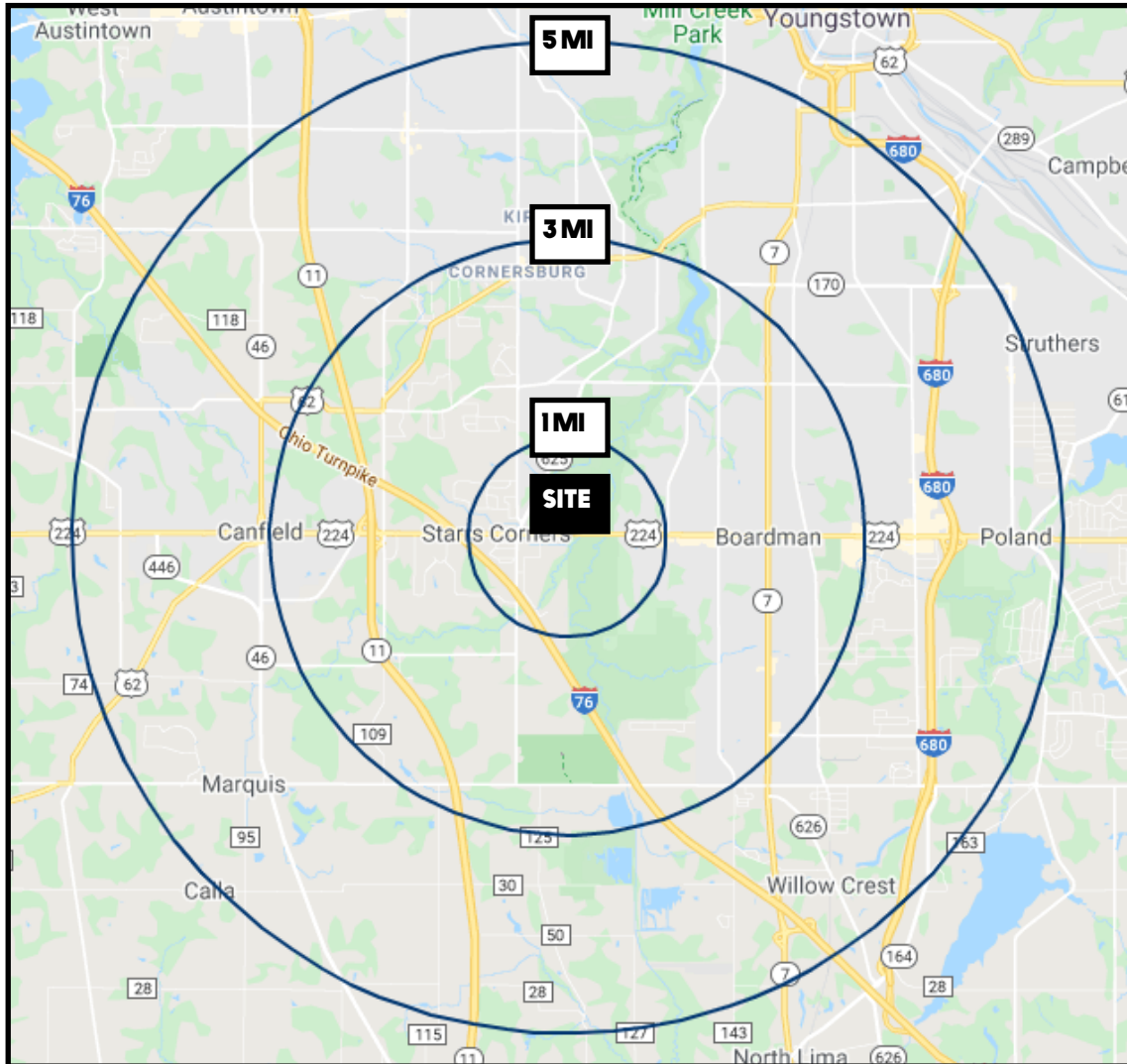
Office: 330.757.4889 | Fax: 330.294.5622 | 3768 Boardman Canfield Rd, Canfield, OH 44406

[www.PLATZREALTYGROUP.com](http://www.PLATZREALTYGROUP.com)



Office: 330.757.4889 | Fax: 330.294.5622 | 3768 Boardman Canfield Rd, Canfield, OH 44406

[www.PLATZREALTYGROUP.com](http://www.PLATZREALTYGROUP.com)



DEMOGRAPHICS	1 MI	3 MI	5 MI
<b>POPULATION</b>	5,901	39,813	106,231
<b>HOUSEHOLDS</b>	2,608	17,413	45,455
<b>MEDIAN AGE</b>	45	45	44
<b>AVERAGE HH INCOME</b>	\$74,872	\$64,093	\$53,431

**SITE INFORMATION**

<b>LOCATION</b>	Boardman Township Mahoning County
<b>PROPERTY TYPE</b>	Medical Office
<b>SIZE</b>	3,164 SF
<b>UTILITIES</b>	Separately metered
<b>SIGNAGE</b>	Monument sign
<b>RENT</b>	Base Rent: \$7.00/SF "Extra Charges" \$5.32/SF

Office: 330.757.4889 | Fax: 330.294.5622 | 3768 Boardman Canfield Rd, Canfield, OH 44406