

Meridian Business Campus

3040/3050 Universal Boulevard, Weston, FL 33331



***66,568 SF Class A Office
Available For Lease***

***Possible Single Tenant Project
Can Accommodate Life Science Lab User***

For More Information:

Timothy J. Talbot
Andrew Ackerman
O (954) 385-0000

www.comrealfortlauderdale.com



Meridian Business Campus

3040/3050 Universal Boulevard, Weston, FL 33331



3040 Universal Boulevard

- 34,153 Square Feet
- Immediately Available

3050 Universal Boulevard

- 32,415 Square Feet
- Immediately Available

- Two-Building Project - 66,568 SF
- Can Accommodate Life Science Lab User
- 10 Foot Finished Ceilings; 15 Feet to Clear
- Signage Available on Weston Road
- Parking Ratio 4.32/1,000

Meridian Business Campus

3040/3050 Universal Boulevard, Weston, FL 33331



Property Highlights

- Located in the heart of Weston
- Two, Class A Single Story, Freestanding Buildings on the Lake
- 3040 Universal Blvd. - Newly Renovated Lobby & Common Area
- Weston Road Exposure
- Parking Ratio 4.32/1,000 SF
- Conveniently located off of I-75, South of I-595, & the Sawgrass Expressway
- Minutes to Shops, Restaurants & Banking Establishments
- 20 Minutes to Fort Lauderdale-Hollywood International Airport
- 30 Minutes to Miami International Airport

www.comrealfortlauderdale.com



Meridian Business Campus

3040/3050 Universal Boulevard, Weston, FL 33331



Meridian Business Campus

3040/3050 Universal Boulevard, Weston, FL 33331



Lobby/Common Area Renovations Completed



MERIDIAN
BUSINESS CAMPUS AT WESTON

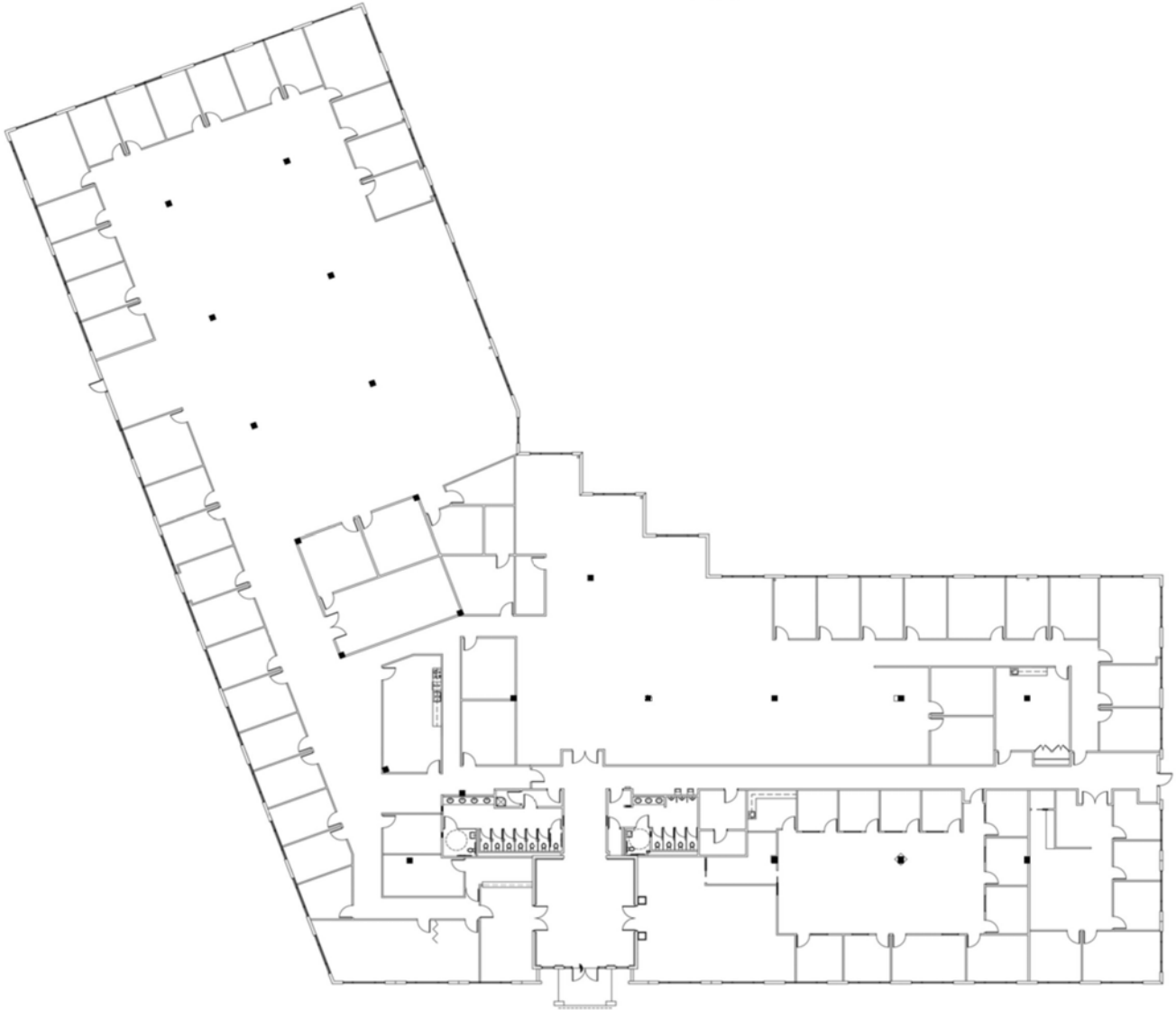
For More Information:

Timothy J. Talbot
Andrew Ackerman
O (954) 385-0000

ComReal
FT. LAUDERDALE
COMMERCIAL REAL ESTATE SERVICES

Meridian Business Campus

3040 Universal Boulevard, Weston, FL 33331



Suite 100 - 34,153 SF

FOR LEASING INFORMATION:

Timothy J. Talbot | ttalbot@comreal.com

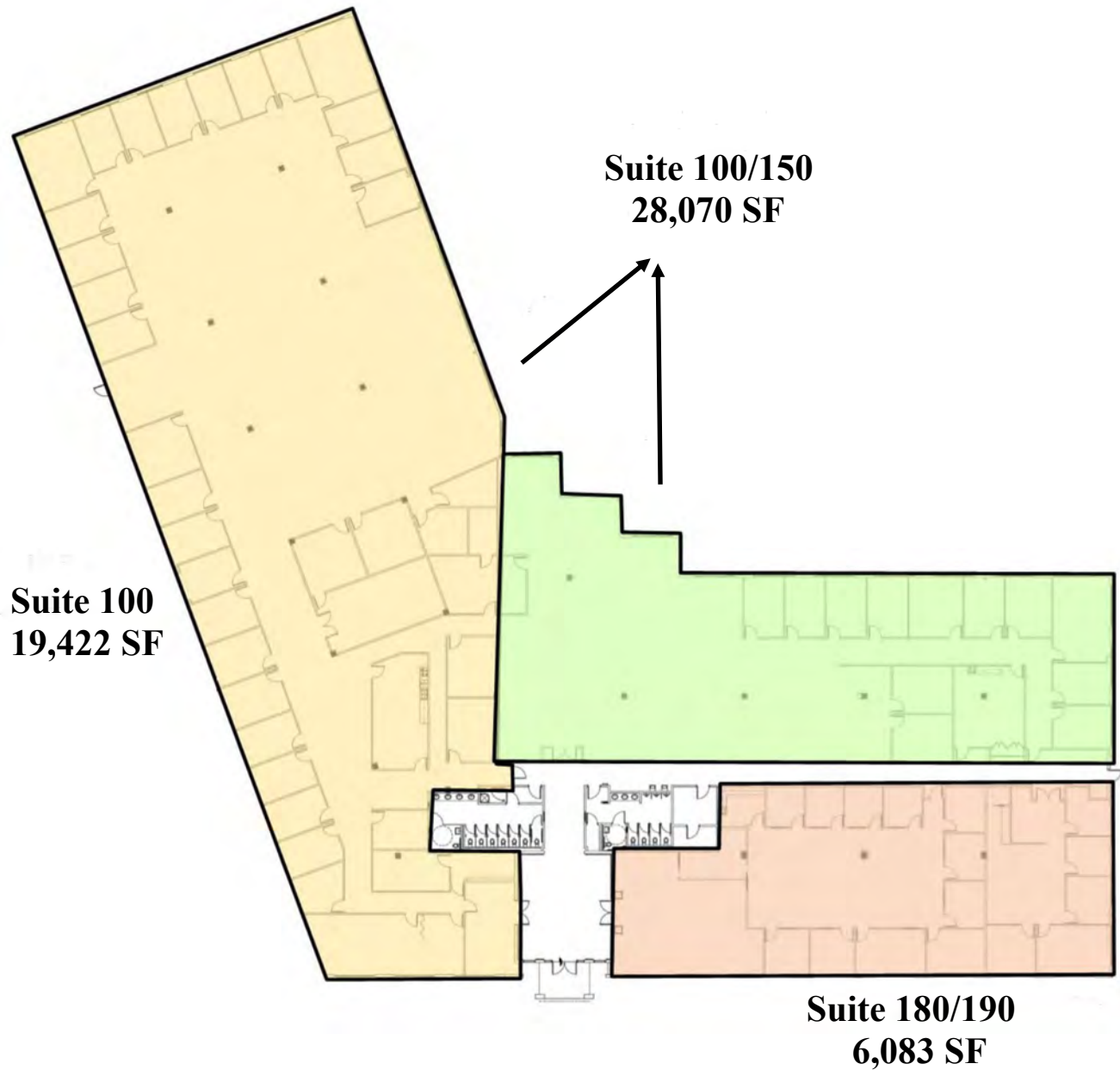
Andrew Ackerman | aackerman@comreal.com

954.385.0000



Meridian Business Campus

3040 Universal Boulevard, Weston, FL 33331



Suite 100 - 34,153 SF

FOR LEASING INFORMATION:

Timothy J. Talbot | ttalbot@comreal.com

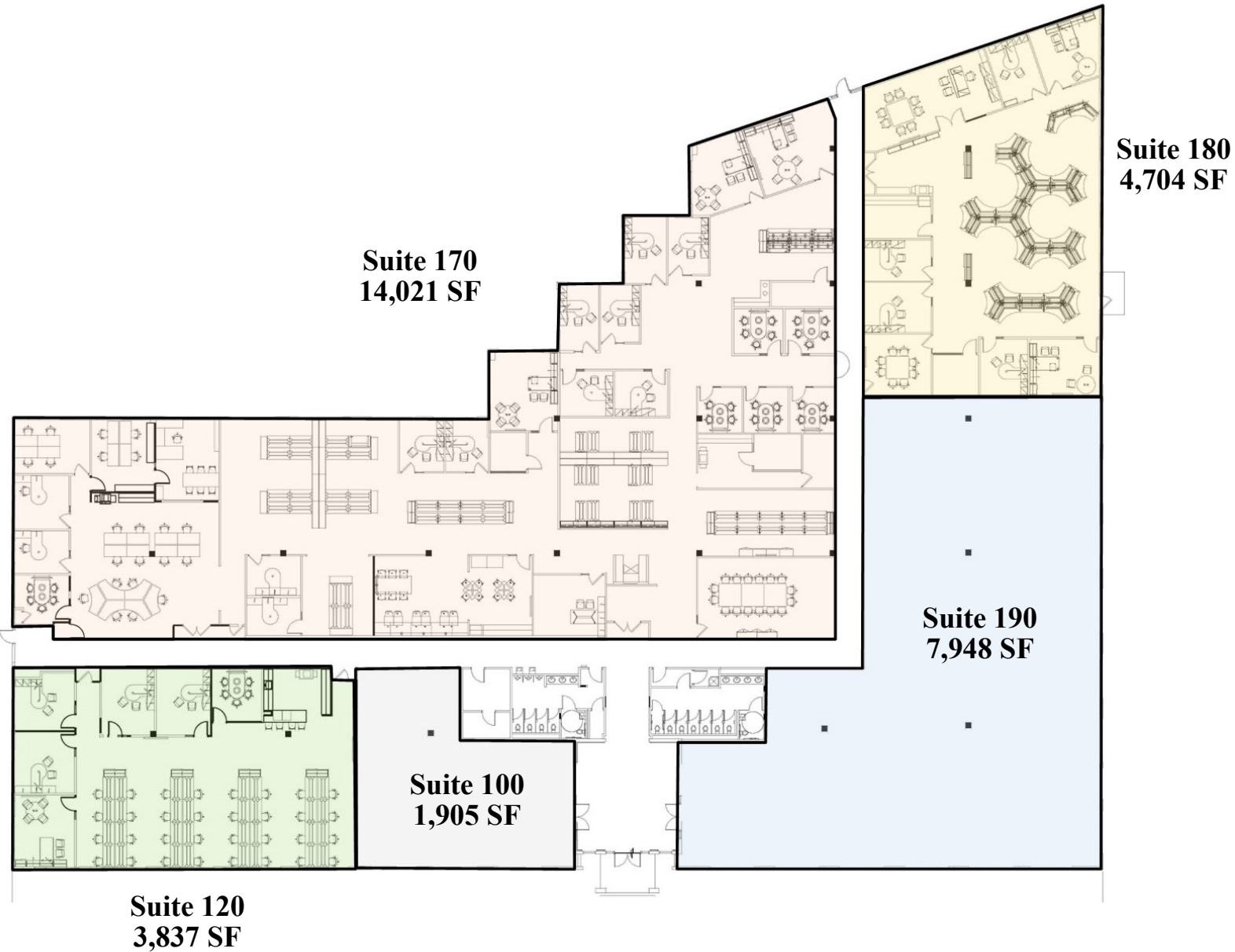
Andrew Ackerman | aackerman@comreal.com

954.385.0000



Meridian Business Campus

3050 Universal Boulevard, Weston, FL 33331



Full Building - 32,415 SF

FOR LEASING INFORMATION:

Timothy J. Talbot | ttalbot@comreal.com

Andrew Ackerman | aackerman@comreal.com

954.385.0000

