

Industrial Land for Sale

11600 Strang Road, La Porte, TX 77571
±4,928 SF on 2.84 AC



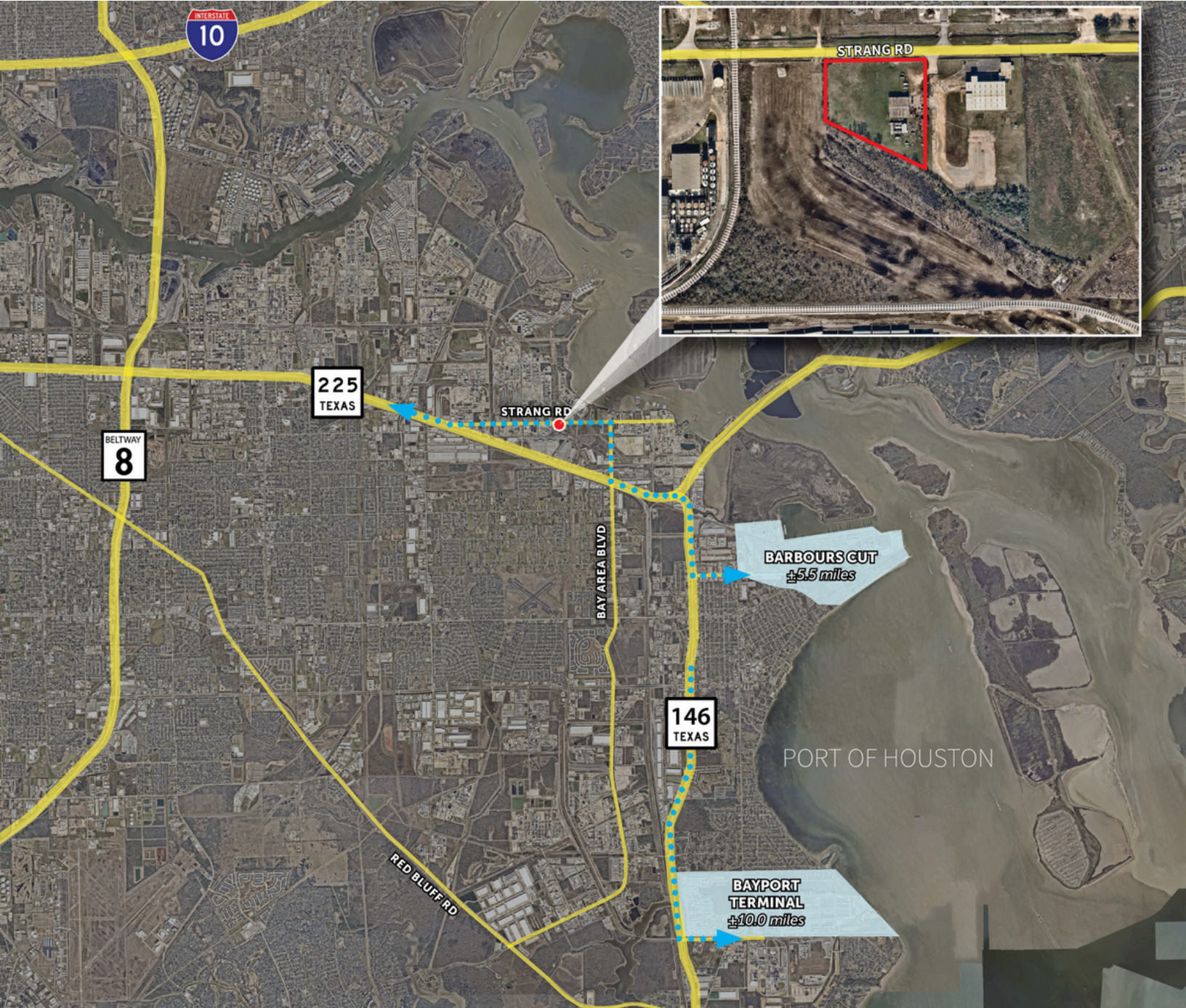
- Acreage: ±2.84 Acres
- Partially Stabilized
- Utilities to the site
- Not in floodplain
- Located in Unincorporated Harris County
- Close proximity to Port Houston Container Terminals
- Sale Price: Contact Broker

Ryan Fuselier
+1 713 888 4032
ryan.fuselier@jll.com

Katie Madden
+1 713 818 1286
katie.madden@jll.com

Industrial Land For Sale

±2.84 partially stabilized acres available



Ryan Fuselier

+1 713 888 4032

ryan.fuselier@jll.com

Katie Madden

+1 713 818 1286

katie.madden@jll.com

Although information has been obtained from sources deemed reliable, neither Owner nor JLL makes any guarantees, warranties or representations, express or implied, as to the completeness or accuracy as to the information contained herein. Any projections, opinions, assumptions or estimates used are for example only. There may be differences between projected and actual results, and those differences may be material. The Property may be withdrawn without notice. Neither Owner nor JLL accepts any liability for any loss or damage suffered by any party resulting from reliance on this information. If the recipient of this information has signed a confidentiality agreement regarding this matter, this information is subject to the terms of that agreement. © 2024 Jones Lang LaSalle IP, Inc. All rights reserved.