

**SR 100 AT BELLE TERRE BLVD  
PALM COAST, FL  
OUTPARCELS FOR LEASE**

**NOW UNDER CONSTRUCTION**



- **DRIVE THRU PAD**
- **RESTAURANT**
- **40,000+ SQFT RETAIL**
- **DRIVE UP ATM AVAILABLE**



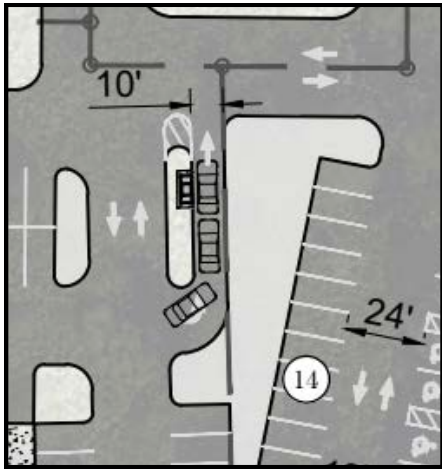
**Development Consultants Inc.**  
[www.dcire.com](http://www.dcire.com)

**Jack Baugh**  
916-934-3172  
[jack@dcire.com](mailto:jack@dcire.com)

**Randy Baugh**  
530-672-6060  
[randy@dcire.com](mailto:randy@dcire.com)

# PROPOSED SITE PLAN

**AVAILABLE**  
**DRIVE UP ATM**



# PROPERTY OVERVIEW



- High Traffic Counts
- Great Visibility
- Multiple Access points
- Signalized Hard Corner

Demographics	2 Miles	5 Miles	10 Miles
Population	28,901	93,312	124,018
Daytime Employees	12,050	20,302	31,764
Average Income	\$80,514	\$88,401	\$86,486
Median Age	51.3	53.5	53.1

# CONCEPT RENDERINGS



# PROPOSED SIGNAGE

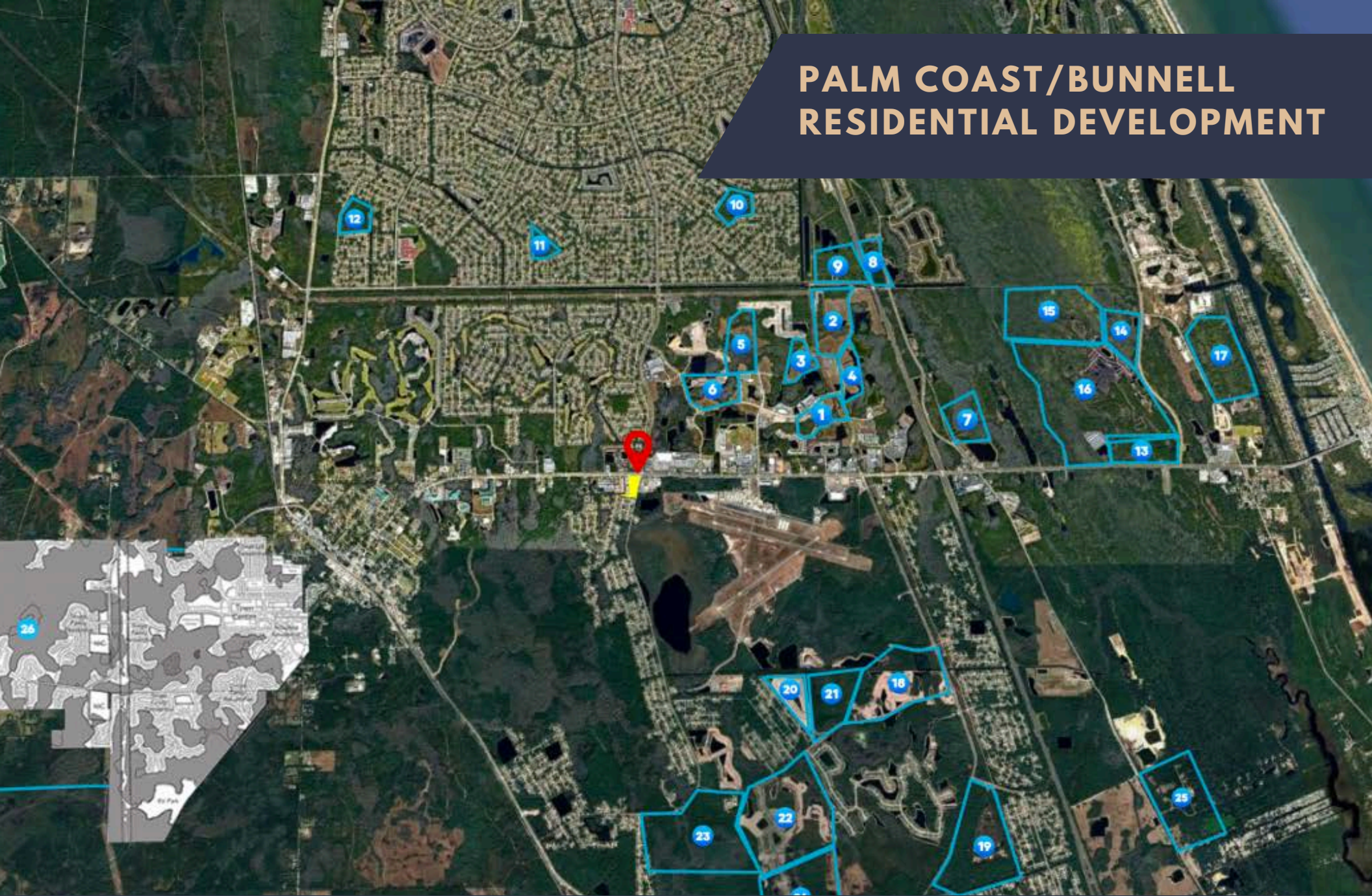


**\*SUBJECT TO CITY APPROVAL**

# LOCATION



# PALM COAST/BUNNELL RESIDENTIAL DEVELOPMENT



## PALM COAST/BUNNELL RESIDENTIAL DEVELOPMENT

1. 251 Unit Multi-family
2. 300 Unit Multi-family
3. 150 Unit Townhomes
4. 240 Unit Multi-Family
5. 110 Single Family
6. 205 Multi-family
7. 233 Single Family
8. 113 Unit Senior Living
9. 224 Single Family
10. 74 Single Family
11. 95 Single Family - Gated
12. 216 Unit Multi-Family
13. 416 Unit Multi-Family
14. 240 Luxury Multi-Family
15. 269 Single Family
16. 482 Single Family
17. 217 Single Family
18. 78 Unit Townhomes
19. 393 Single Family
20. 182 Unit Townhomes
21. 125 Single Family
22. 399 Single Family
23. 275 Single Family
24. 386 Single Family
25. 201 Single Family
26. Haw Creek - 6,000-8,000 residential units

Over **16,000** Residential units planned or in progress

Average 2.29 people per HH = **36,640+** New Residents

# CONTACT US

**Jack Baugh**

**916-934-3172**

**dcijbaugh@gmail.com**

**Randy Baugh**

**530-672-6060**

**dcirandy@gmail.com**

---

**[www.dcire.com](http://www.dcire.com)**



**DEVELOPMENT  
CONSULTANTS  
INC.**