

# INDUSTRIAL PROPERTY FOR LEASE 2,000+/- SF Maintenance Shop

**KING** Industrial  
Realty, Inc.



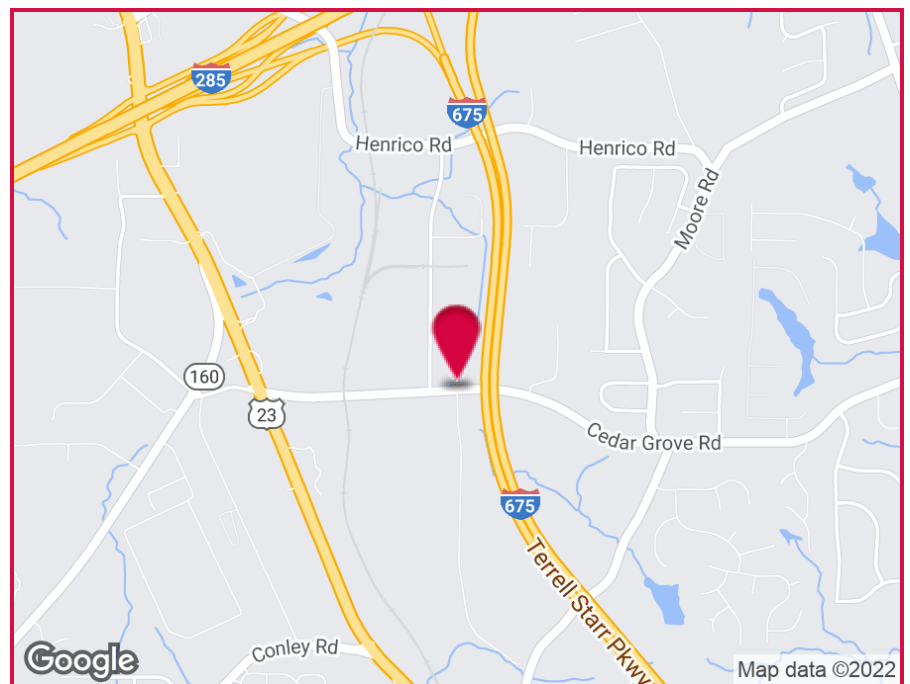
## 1554 Cedar Grove Road, Conley, GA 30288

### OFFERING SUMMARY

Available SF: 2,000 SF  
Lot Size: 0.35 Acres  
Zoning: M

### PROPERTY HIGHLIGHTS

- Truck Maintenance Shop
- 1,000+/- SF Office Space
- 14' Drive-In Door



For More Information Contact:

**BRIAN BRATTON, SIOR**  
Vice President  
404.942.2028  
bbratton@kingindustrial.com

**STEVE RATCHFORD, SIOR, CCIM**  
Senior Vice President  
404.942.2003  
sratchford@kingindustrial.com

# INDUSTRIAL PROPERTY FOR LEASE

## 2,000+/- SF Maintenance Shop

1554 Cedar Grove Road, Conley, GA 30288

**KING** Industrial Realty, Inc.



For More Information Contact:

**BRIAN BRATTON, SIOR**

Vice President

404.942.2028

bbratton@kingindustrial.com

**STEVE RATCHFORD, SIOR, CCIM**

Senior Vice President

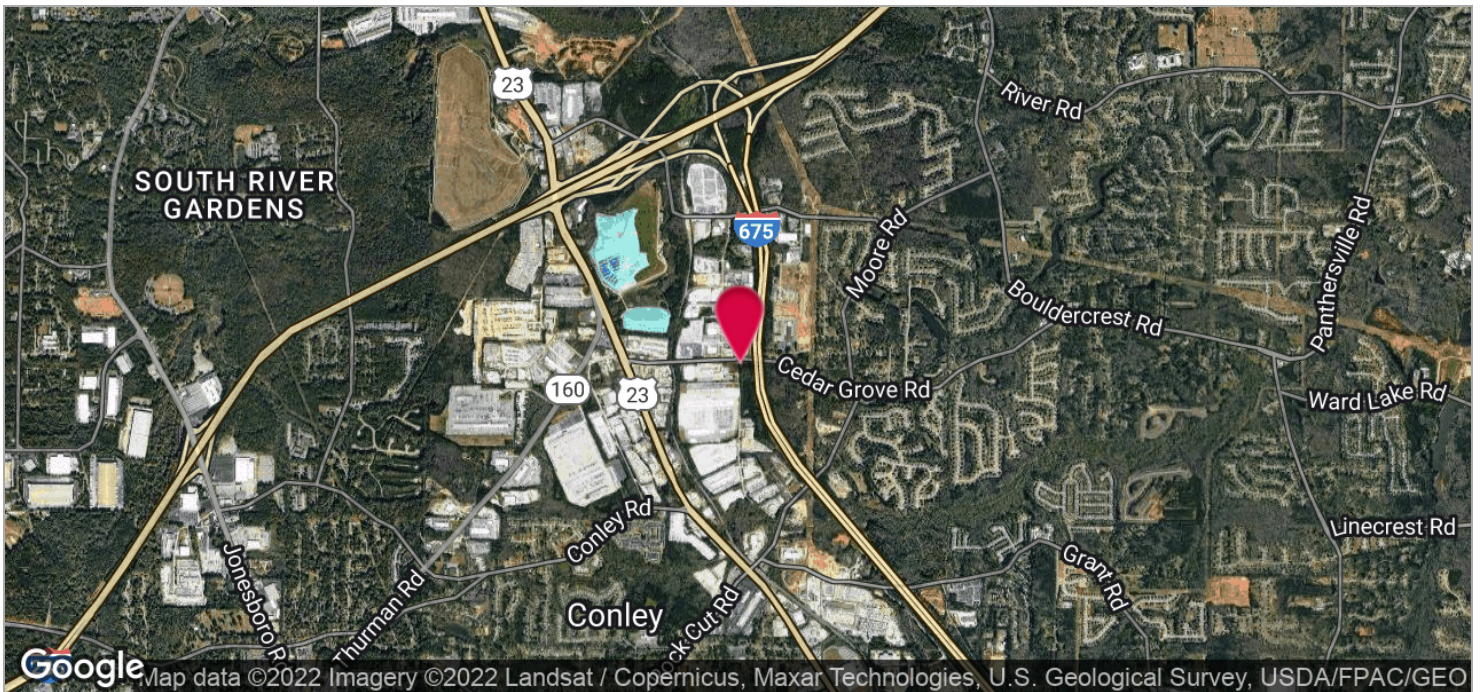
404.942.2003

sratchford@kingindustrial.com

# INDUSTRIAL PROPERTY FOR LEASE

## 2,000+/- SF Maintenance Shop

1554 Cedar Grove Road, Conley, GA 30288



For More Information Contact:

**BRIAN BRATTON, SIOR**

Vice President

404.942.2028

bbratton@kingindustrial.com

**STEVE RATCHFORD, SIOR, CCIM**

Senior Vice President

404.942.2003

sratchford@kingindustrial.com



1920 Monroe Dr., NE. Atlanta, GA 30324 • 404.942.2000 • www.kingindustrial.com

Every effort has been made to provide accurate information, but no liability is assumed for errors and omissions