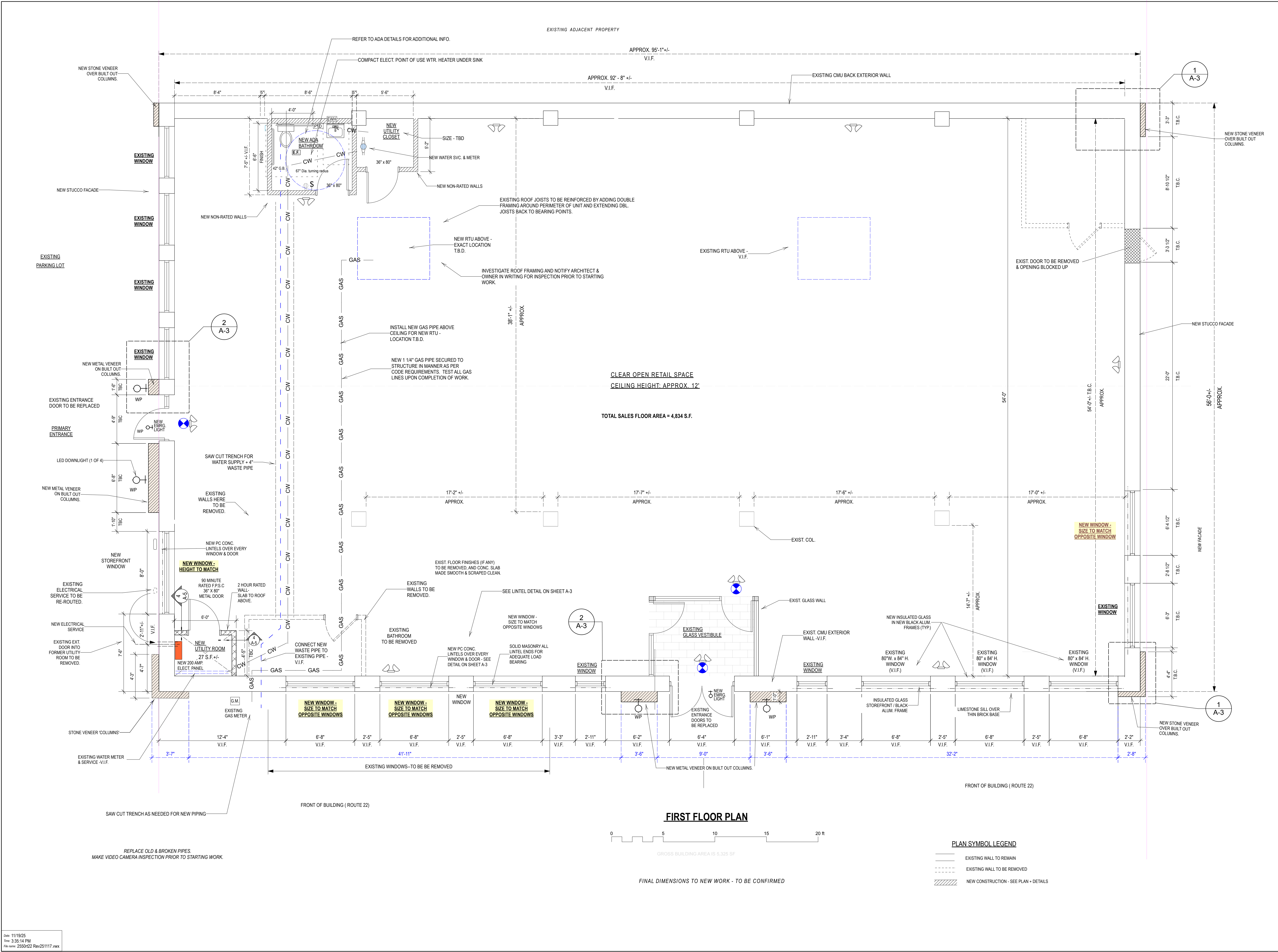




DATE	NO.	REVISIONS / ISSUES
9.25.25	-	ISSUED FOR PRICING
11.19.25	-	ISSUED FOR BUILDING PERMIT



**ELECTRICAL LEGEND**

- CODE APPROVED EMERGENCY LIGHTING, INSTALLED IN ACCORDANCE WITH ALL CODES
- CODE APPROVED EXIT SIGN WITH EMERG. LIGHTING, INSTALLED IN ACCORDANCE WITH ALL CODES
- WALL MOUNTED LIGHT
- WP WEATHERPROOF

PROJECT:  
 PROPOSED FACADE ALTERATION  
 FOR  
 EXISTING 1 STORY COMMERCIAL BUILDING

LOCATION:  
 2550 ROUTE 22  
 UNION, NJ

DRAWING TITLE:  
 FIRST FLOOR PLAN

DATE: SEE ABOVE	DRAWING SHEET:
	<b>A-2</b>
	Dwg. 2 of
SCALE: AS NOTED	