

For sublease

Liberty Commerce Center
2601 S. Hughes Road, Suite 100, Liberty, MO

± 122,887 SF Available



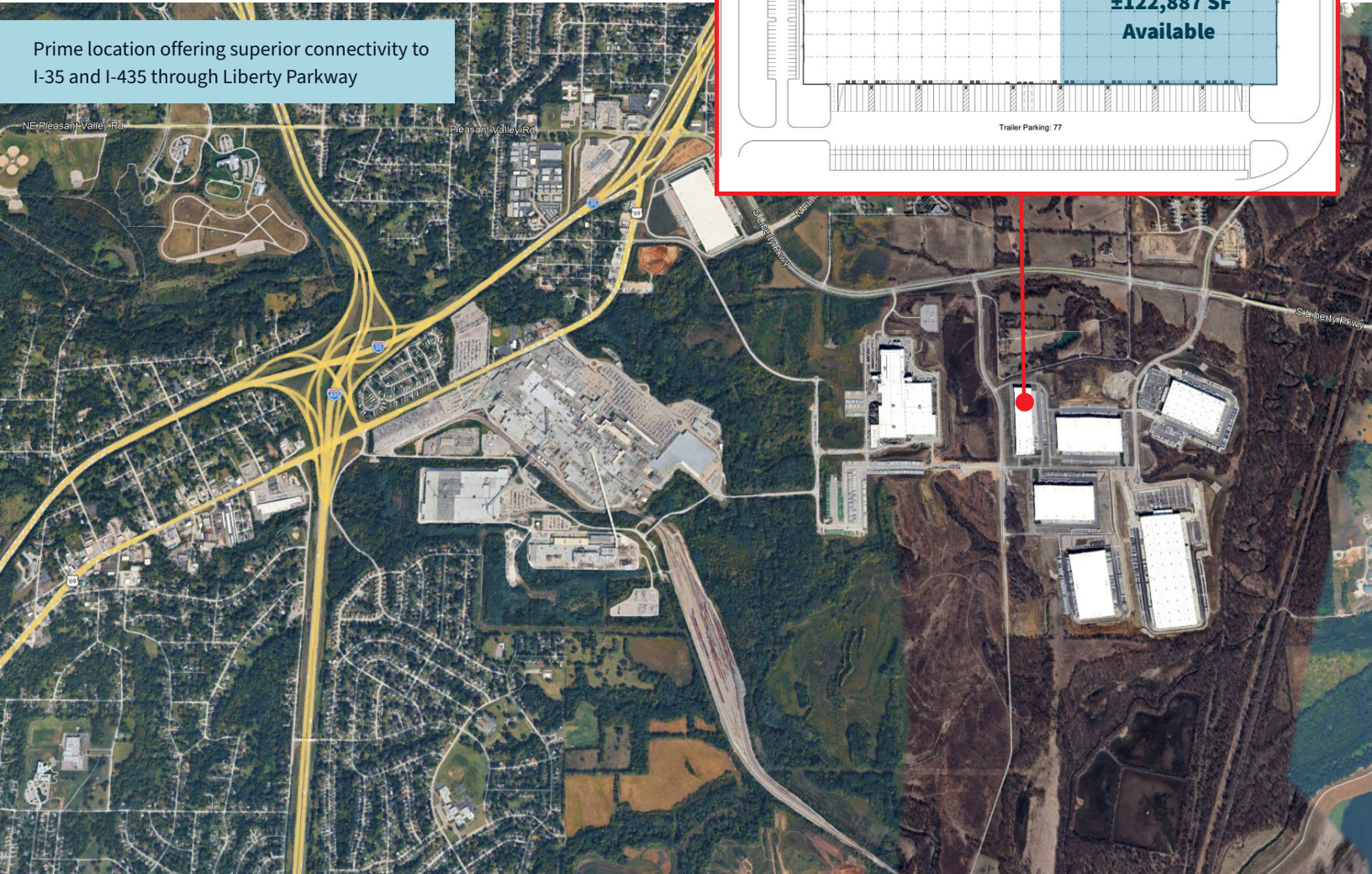
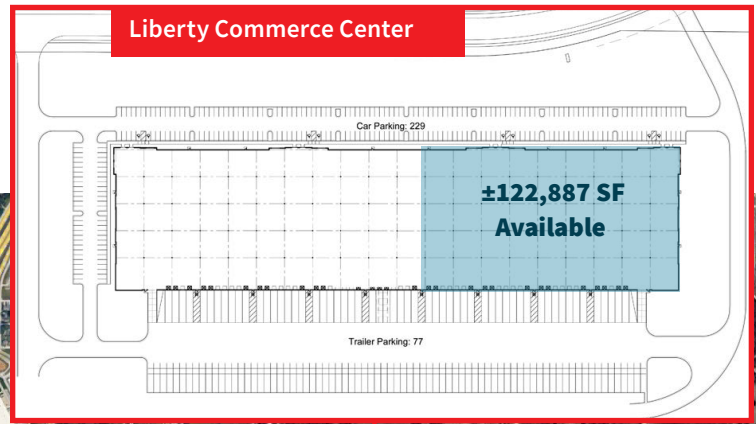
Kevin Wilkerson, SIOR
+1 913 469 4601
kevin.wilkerson@jll.com

Phil Algrim, SIOR
+1 913 469 4605
phil.algrim@jll.com

Nick Tinnel
+1 913 469 4623
nick.tinnel@jll.com

Site plan

Prime location offering superior connectivity to I-35 and I-435 through Liberty Parkway



Building Size	± 272,000 SF
Available SF	± 122,887 SF
Office Size	± 2,900 SF
Year Built	2015
Clear Height	36'
Loading	12 DH, 1 DI
Sprinkler	ESFR

Asking Rate:	\$7.25/SF NNN
2026 Estimated NNN's:	
RE Taxes	\$0.22/SF
Insurance & CAM (including PM fee)	\$0.99/SF
Sublease Term:	December 31, 2028