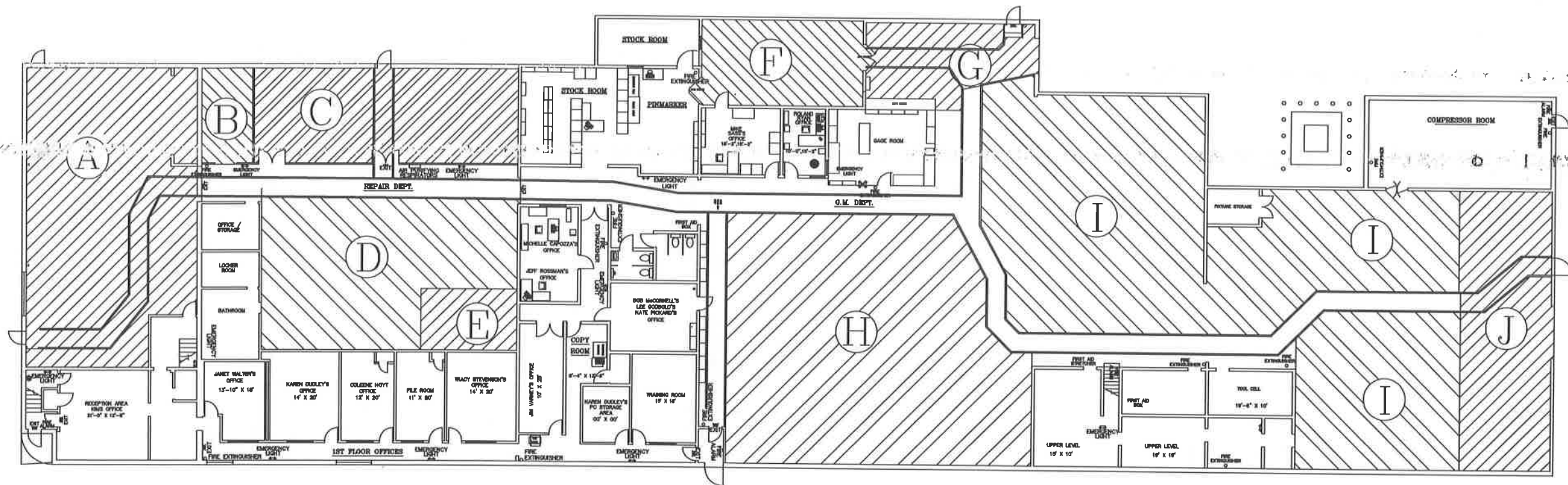


FLOOR PLAN

BY DEPARTMENT



BURNET AVE.

A—GRIND

B—MAINTENANCE

C—BABBITT ROOM

D—REPAIR DEPARTMENT

E—DEBURR

F—INSPECTION DEPARTMENT

G—SHIPPING DEPARTMENT

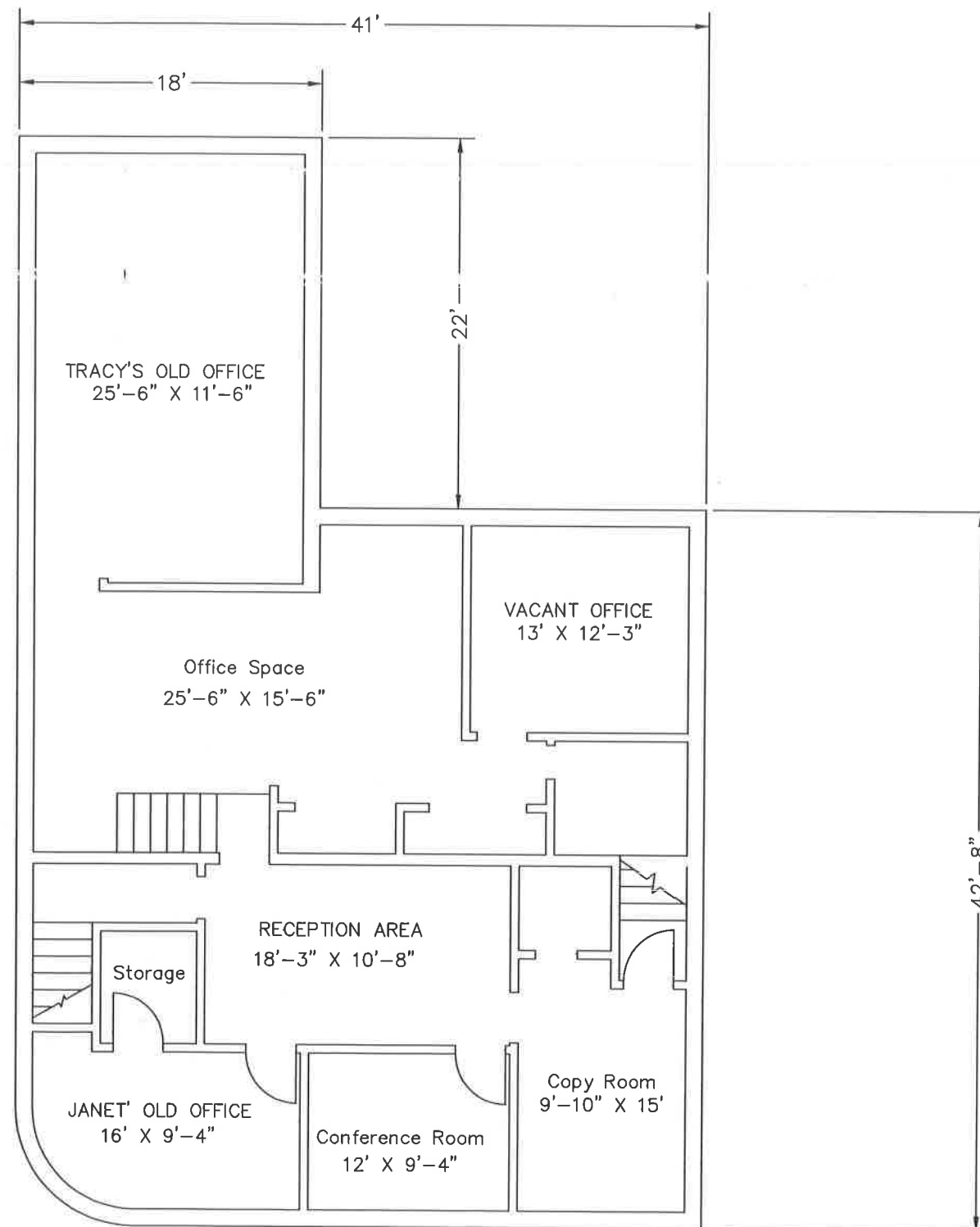
H—GENERAL MACHINING

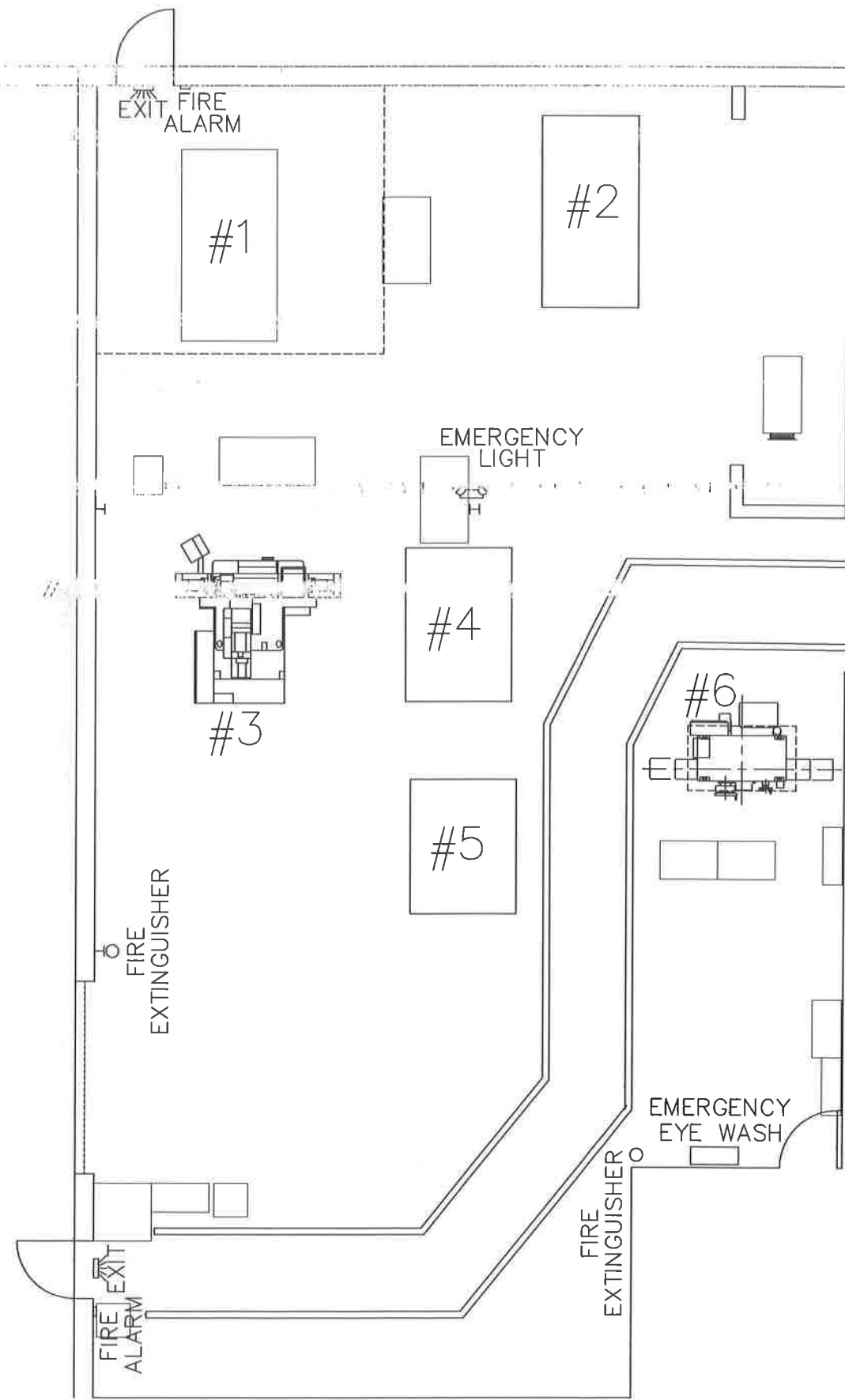
I—CNC MACHINING DEPARTMENT

J—RAW MATERIALS (SAWS)

FLOOR PLAN

2nd FLOOR OFFICES

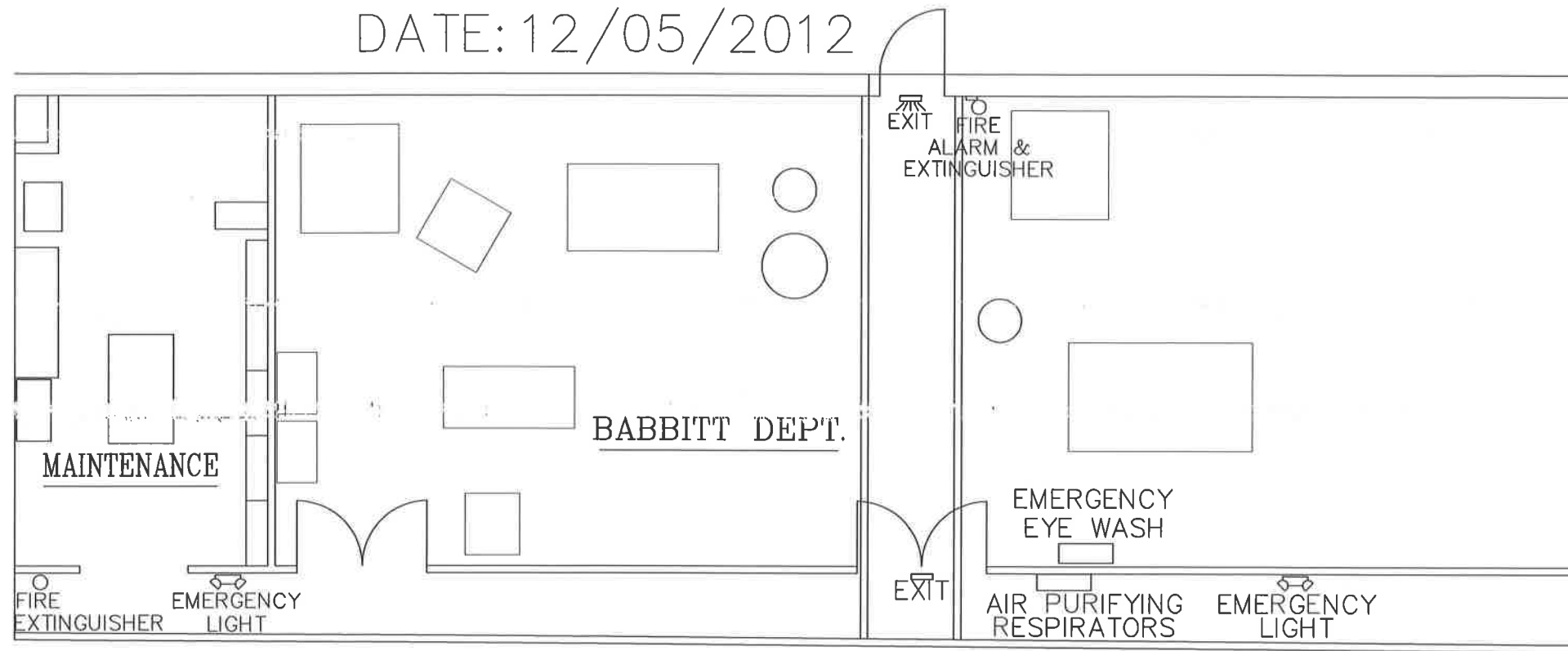




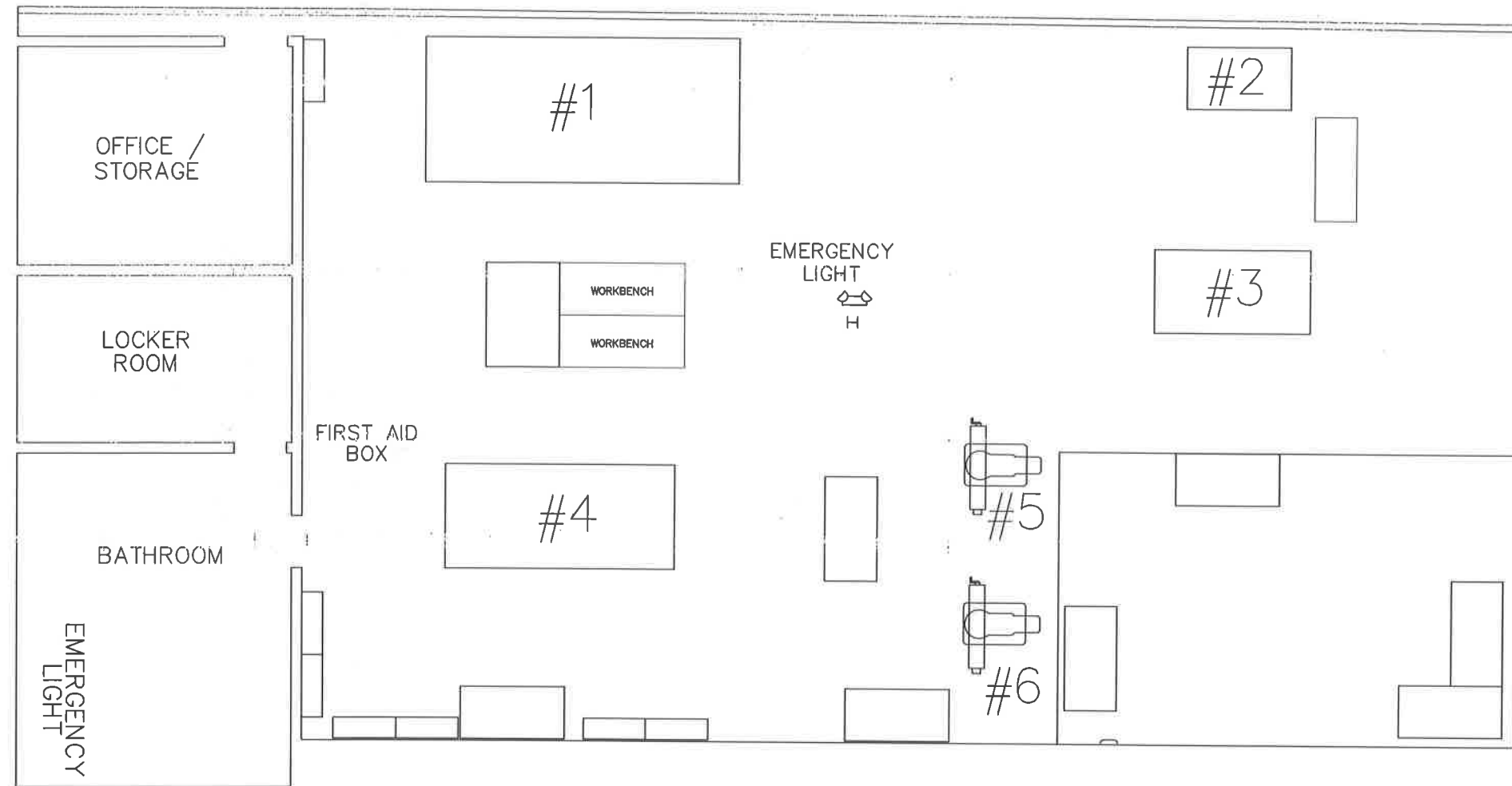
GRINDING AREA "A"

DATE: 12/05/2012

DATE: 12/05/2012

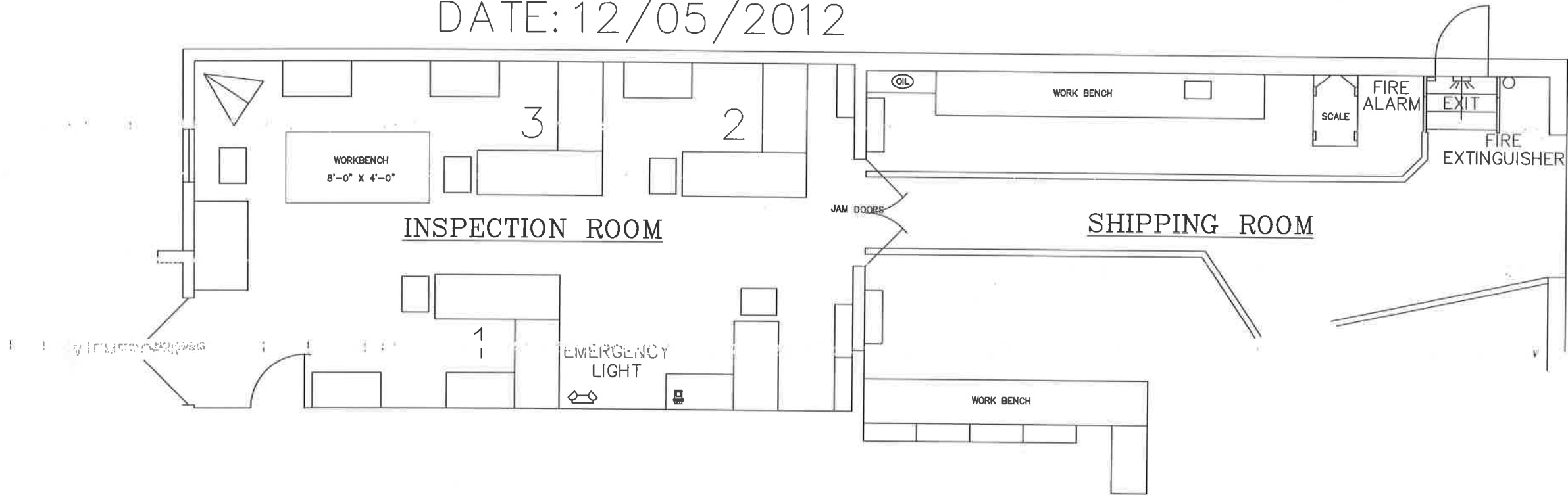


MAINTENANCE & BABBITT "B" - "C"

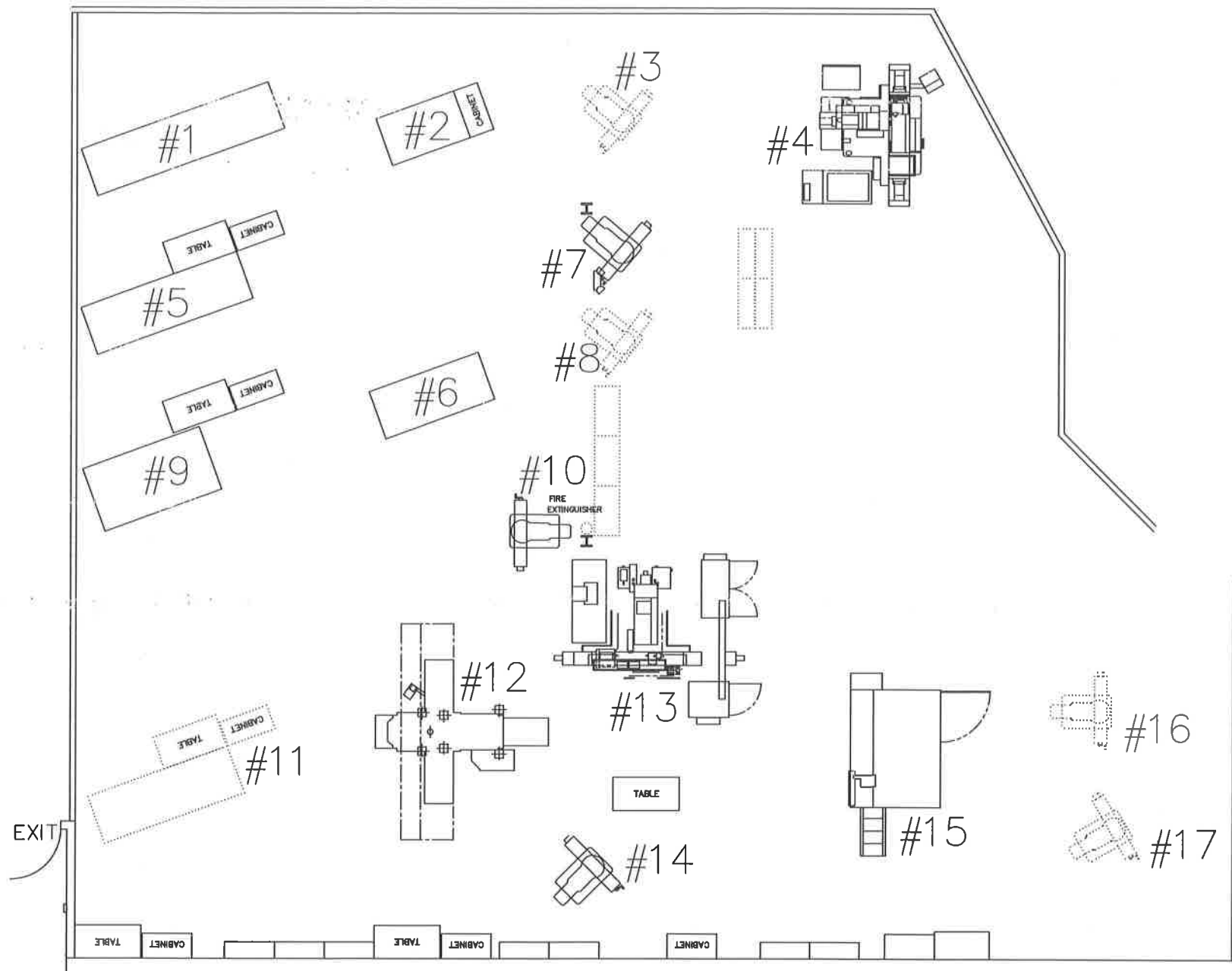


REPAIR & DEBURR "D" — "E"

DATE: 12/05/2012

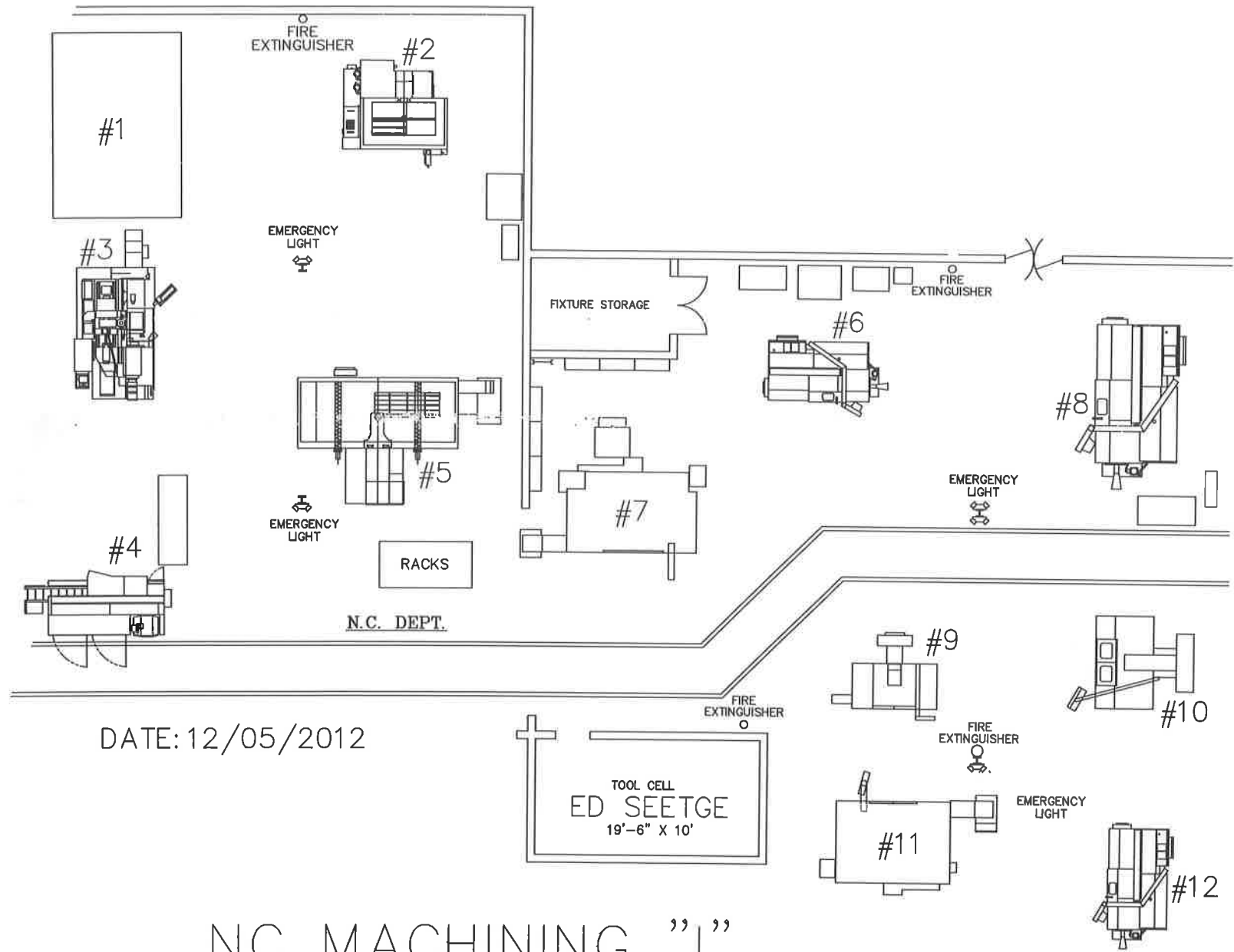


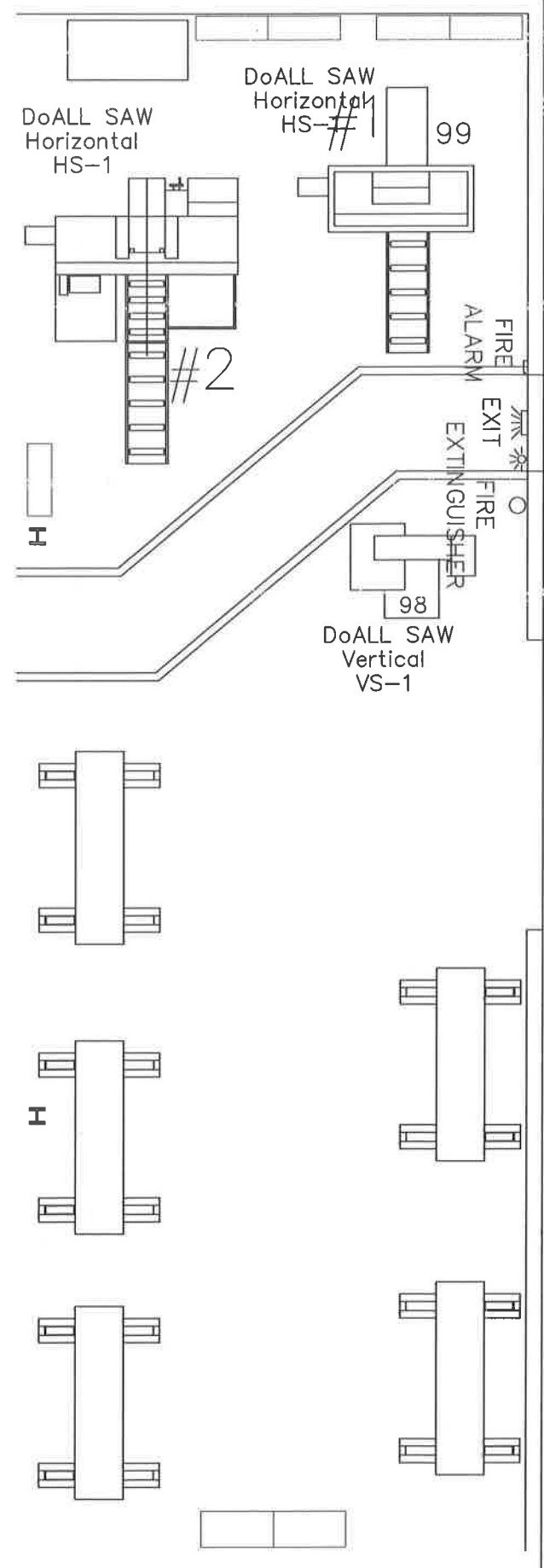
INSPECTION & SHIPPING "F" - "G"



DATE: 12/05/2012

GENERAL MACHINING "H"

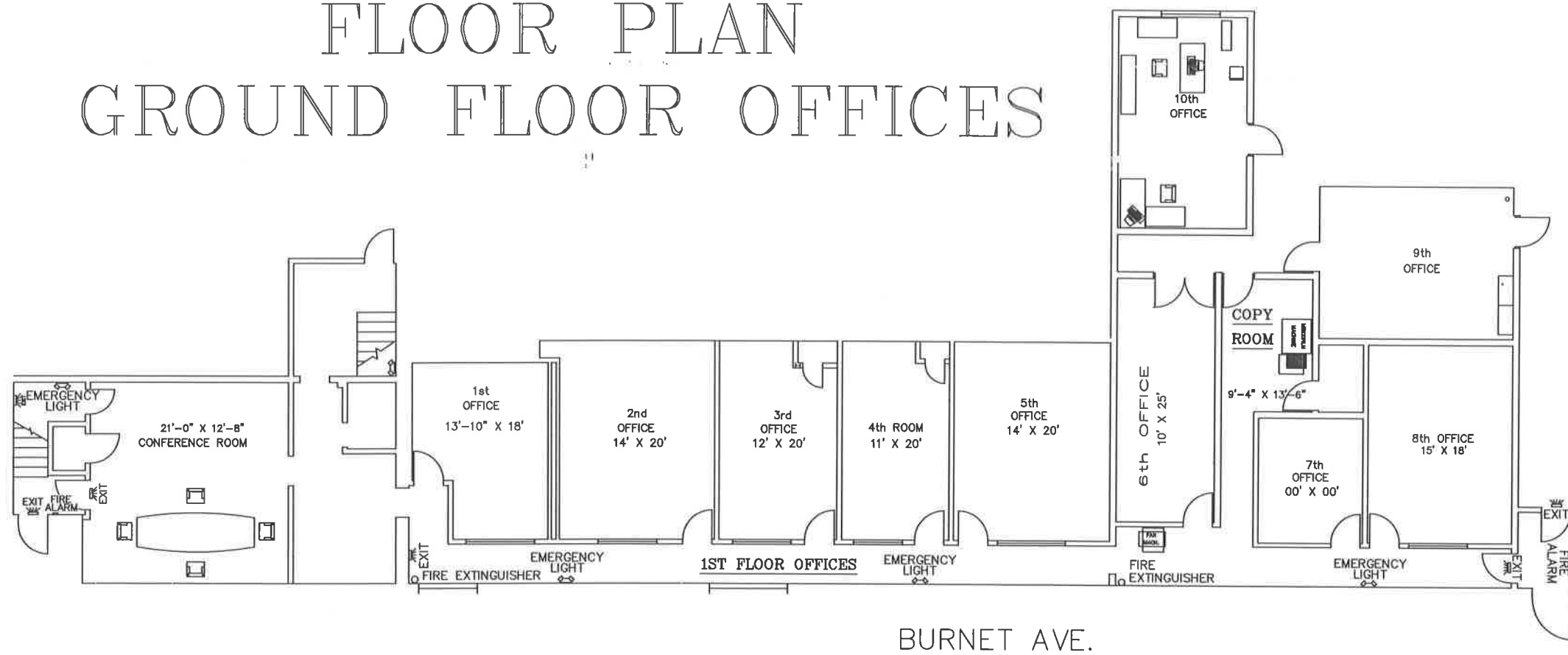




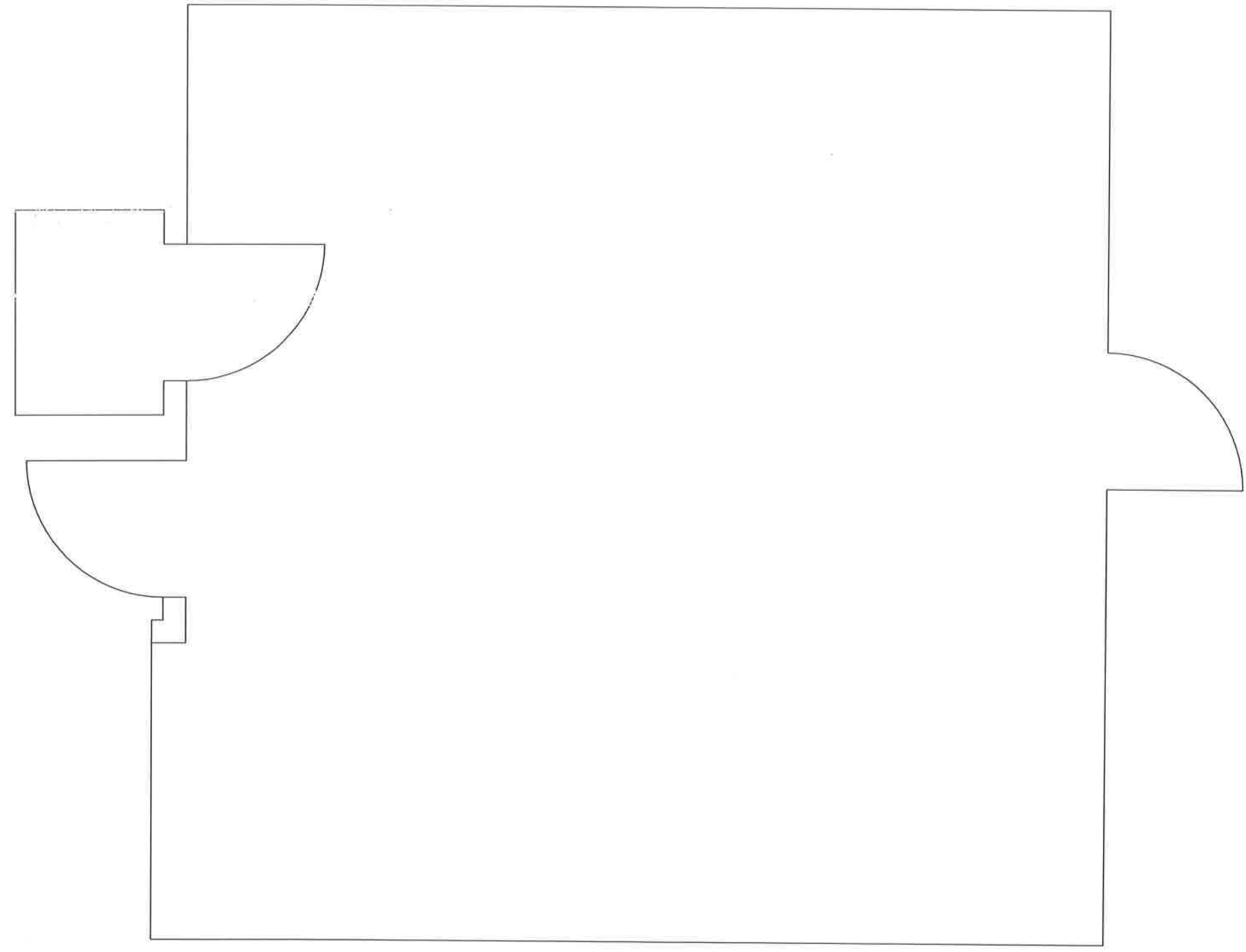
SAWS "J"

DATE: 12/05/2012

FLOOR PLAN GROUND FLOOR OFFICES

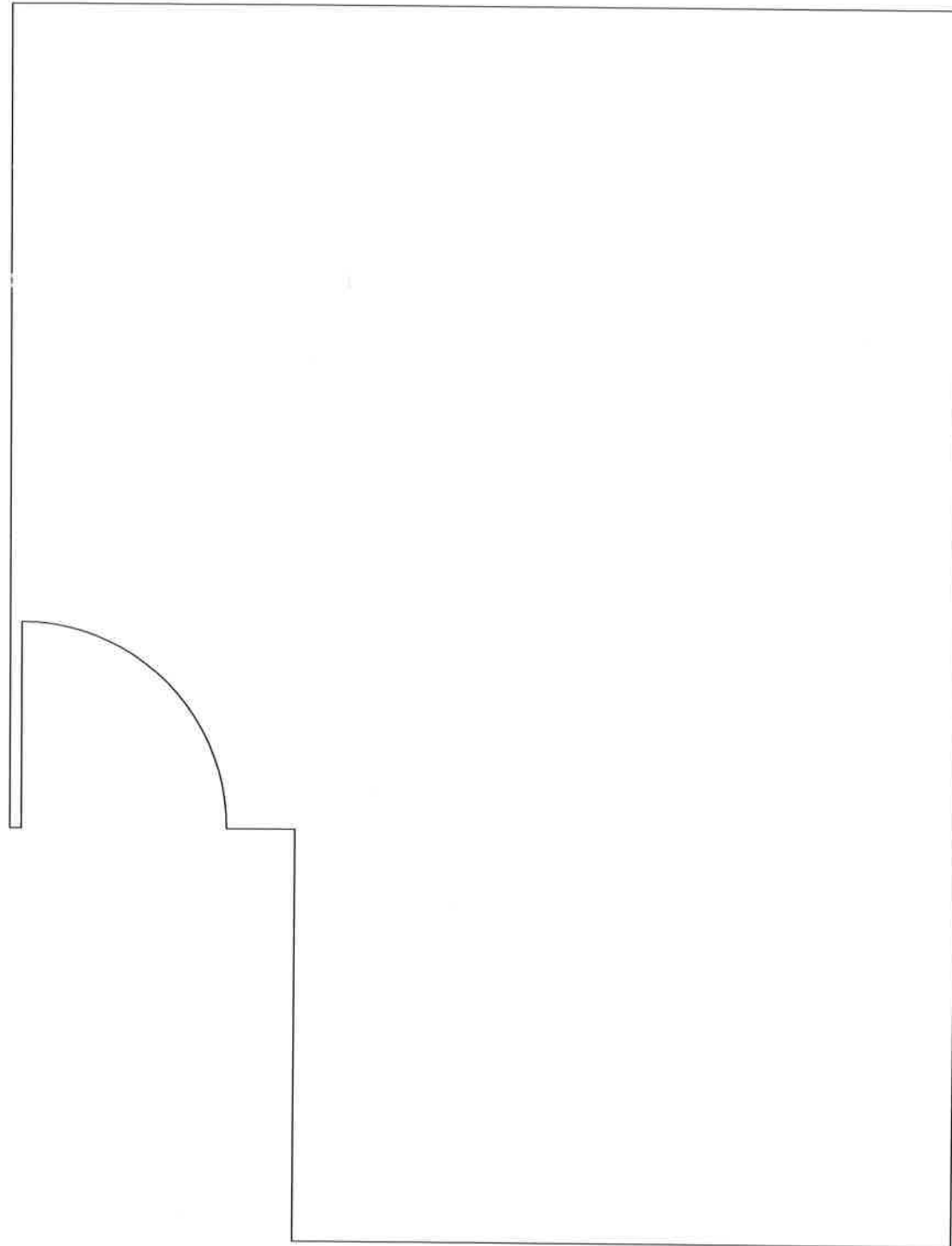


21'-0" X 12'-8"
CONFERENCE ROOM

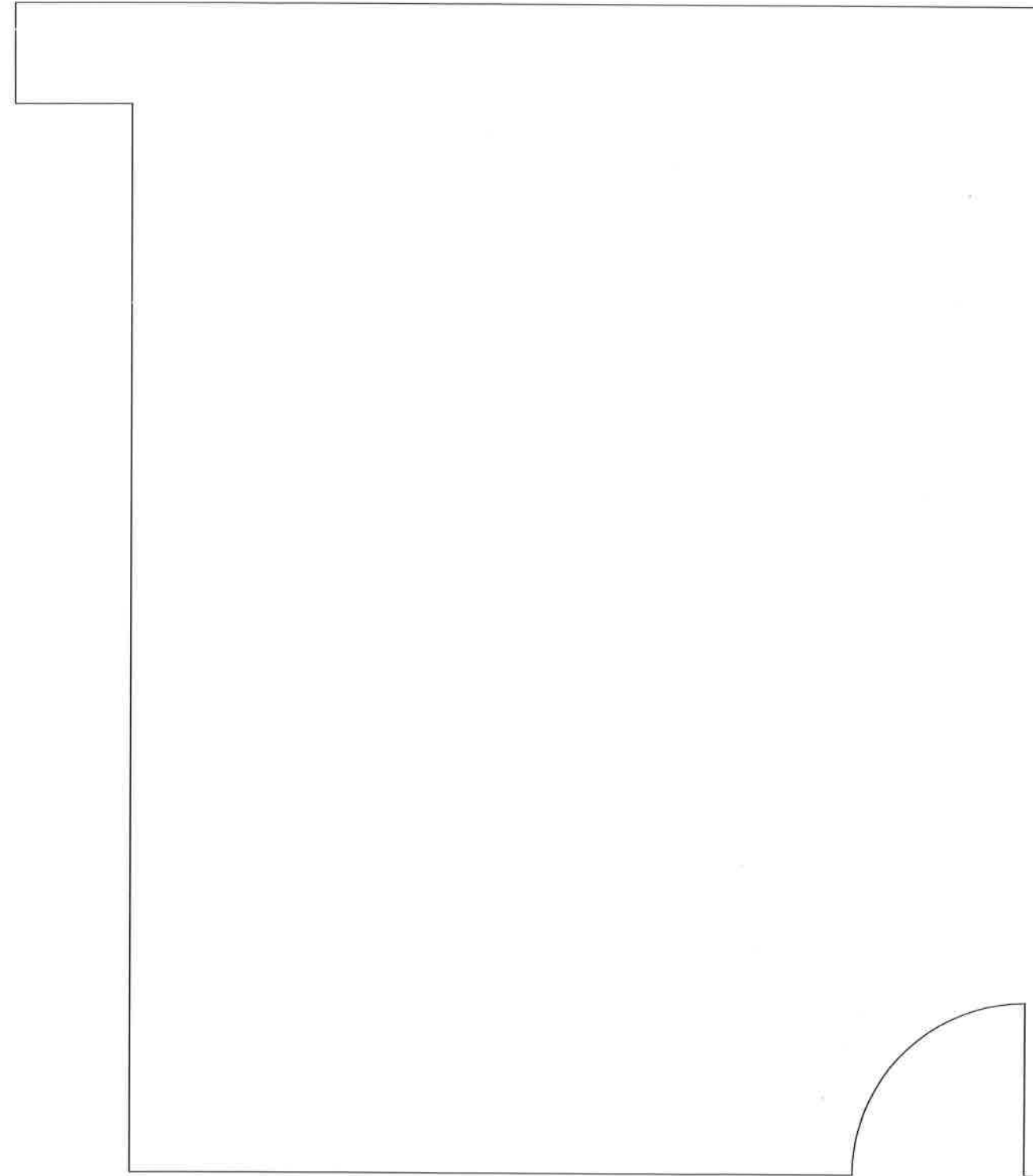


1st
OFFICE

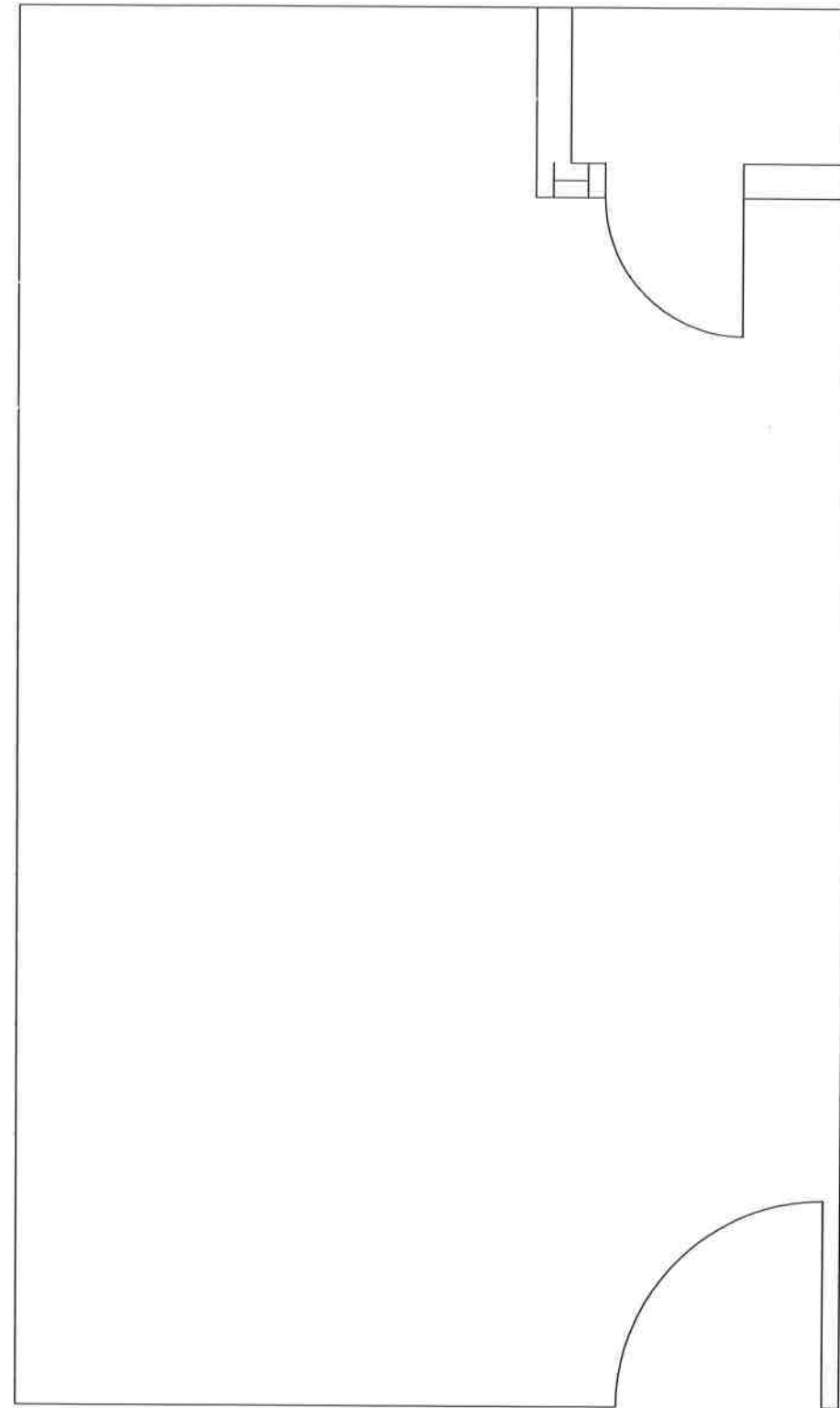
13'-10" X 18'



2nd
OFFICE
14' X 20'

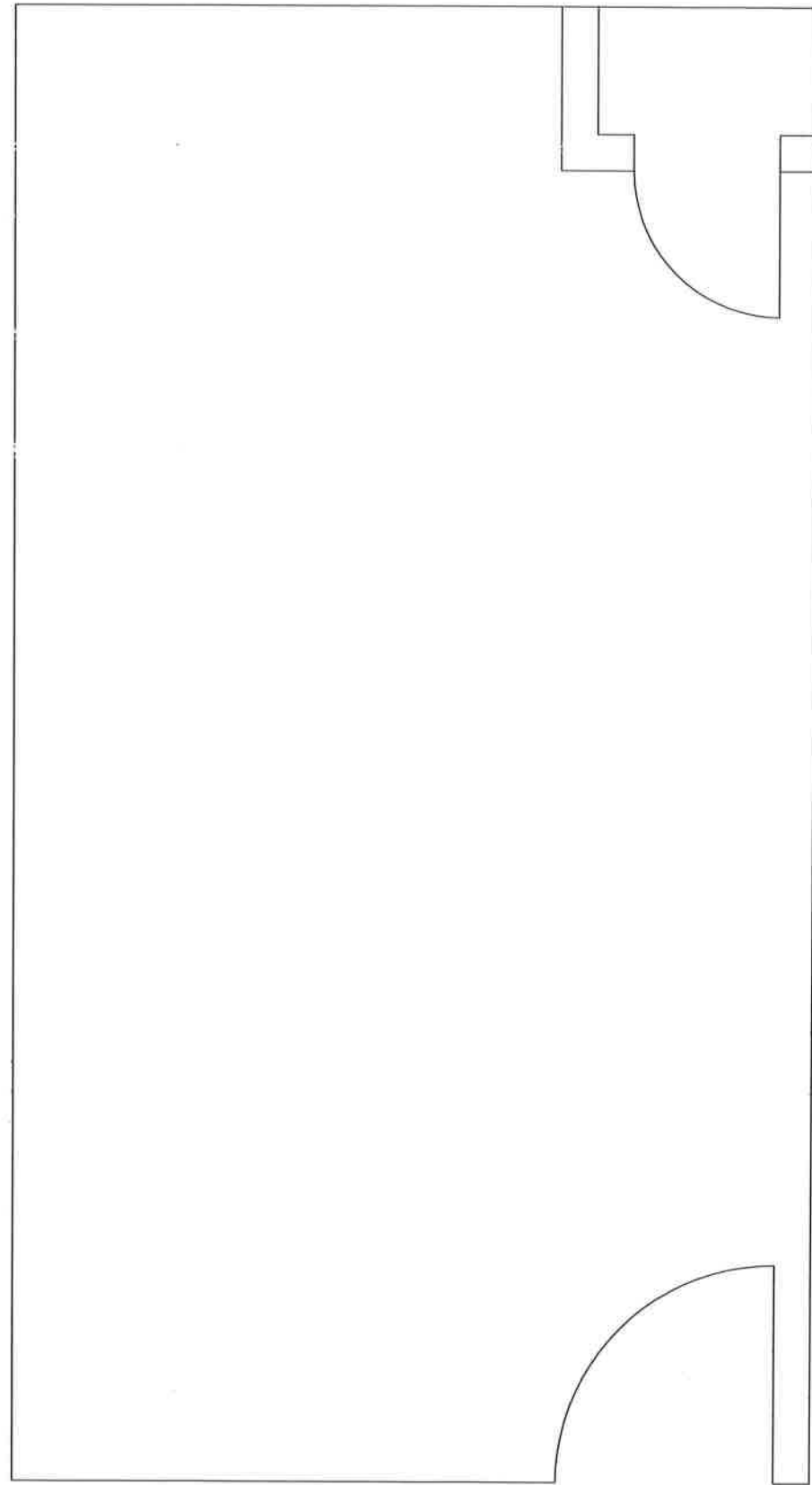


3rd
OFFICE
12' X 20'

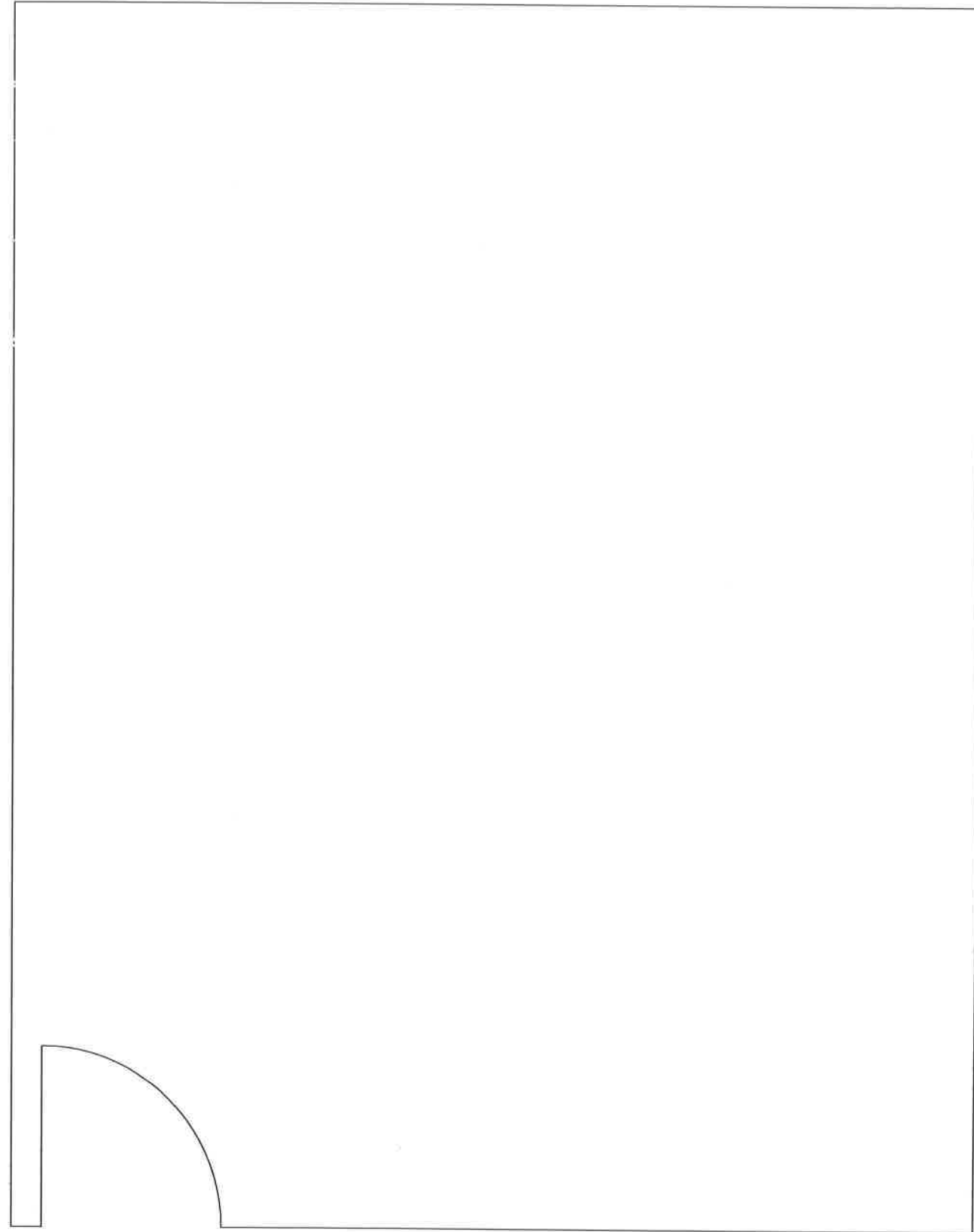


4th

11' X 20'

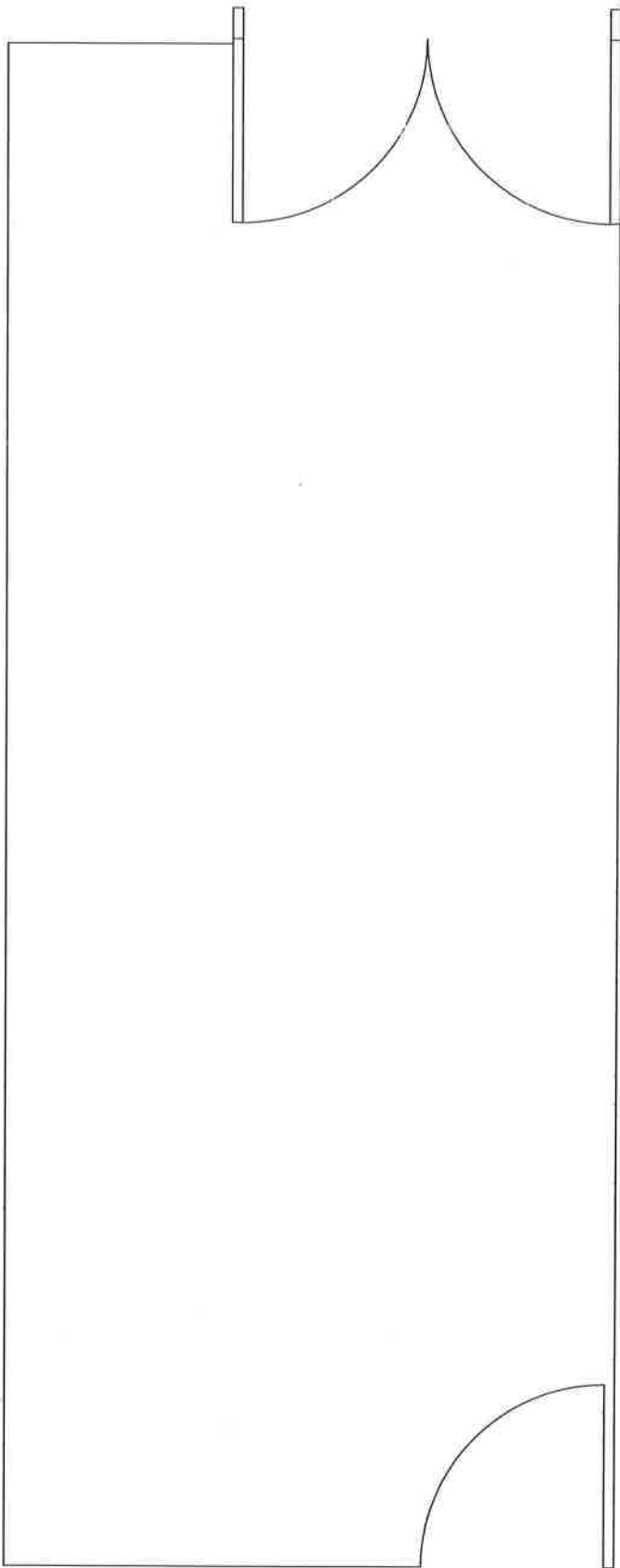


5th
OFFICE
14' X 20'



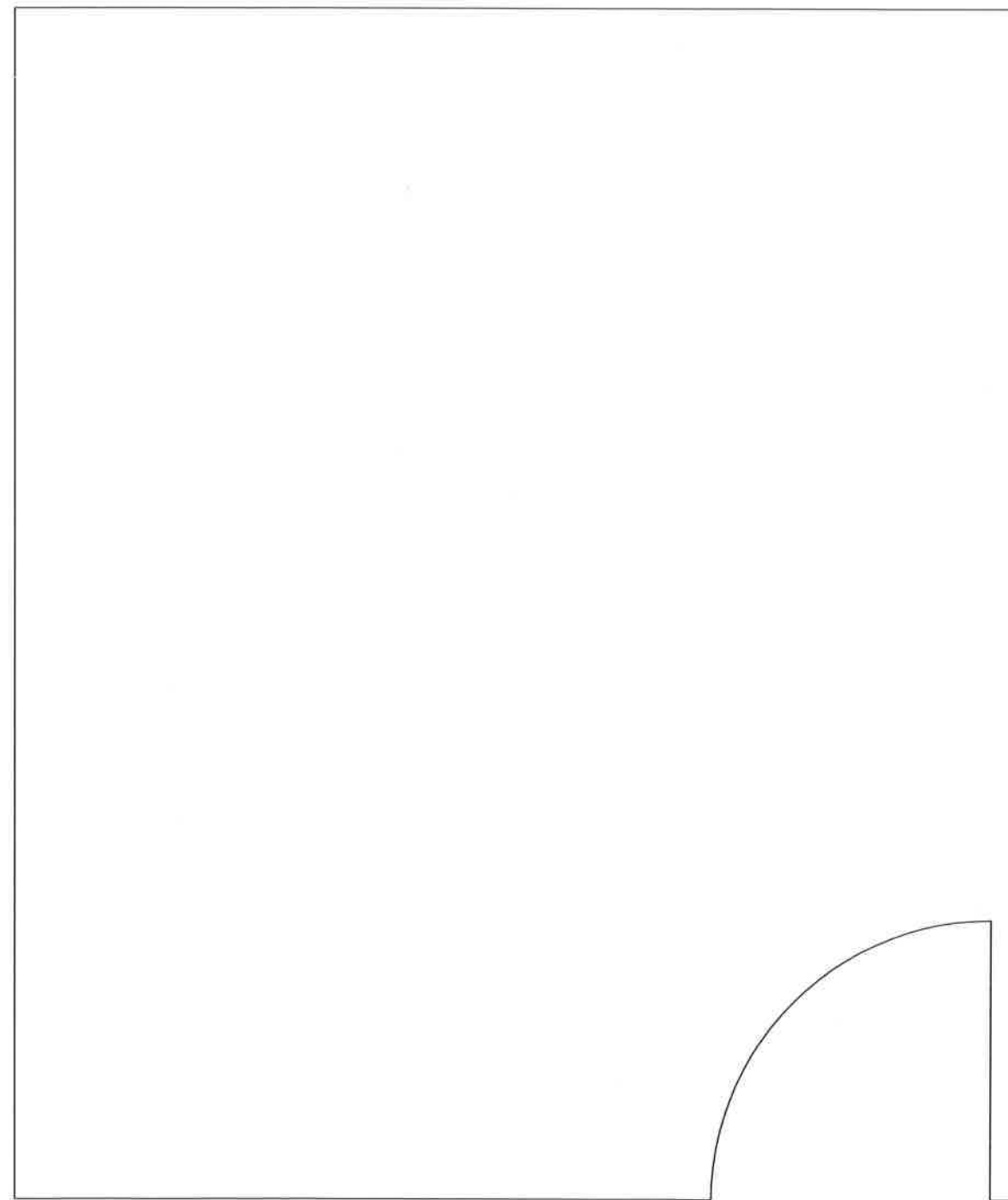
6th OFFICE

10' X 25'

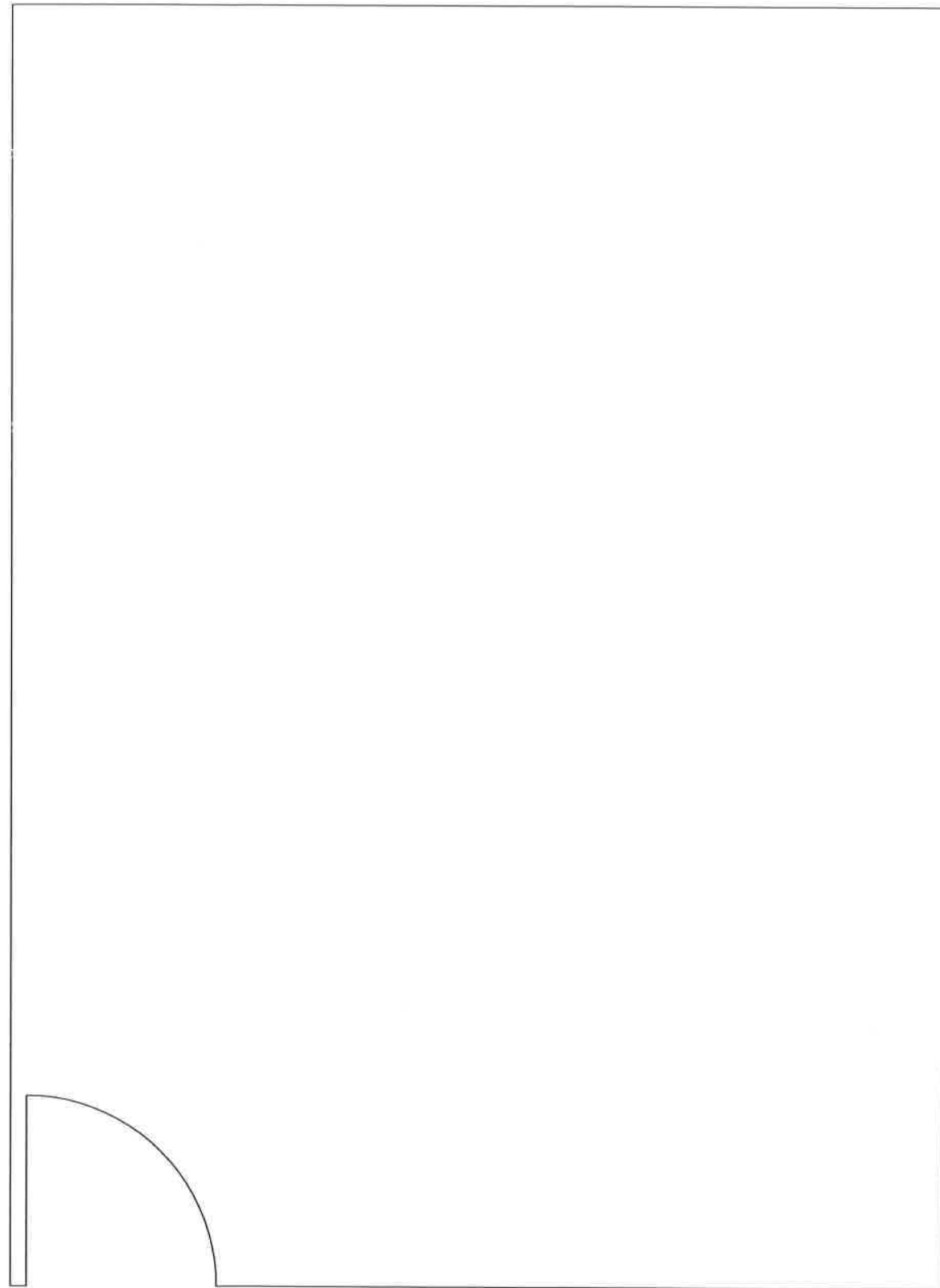


7th OFFICE

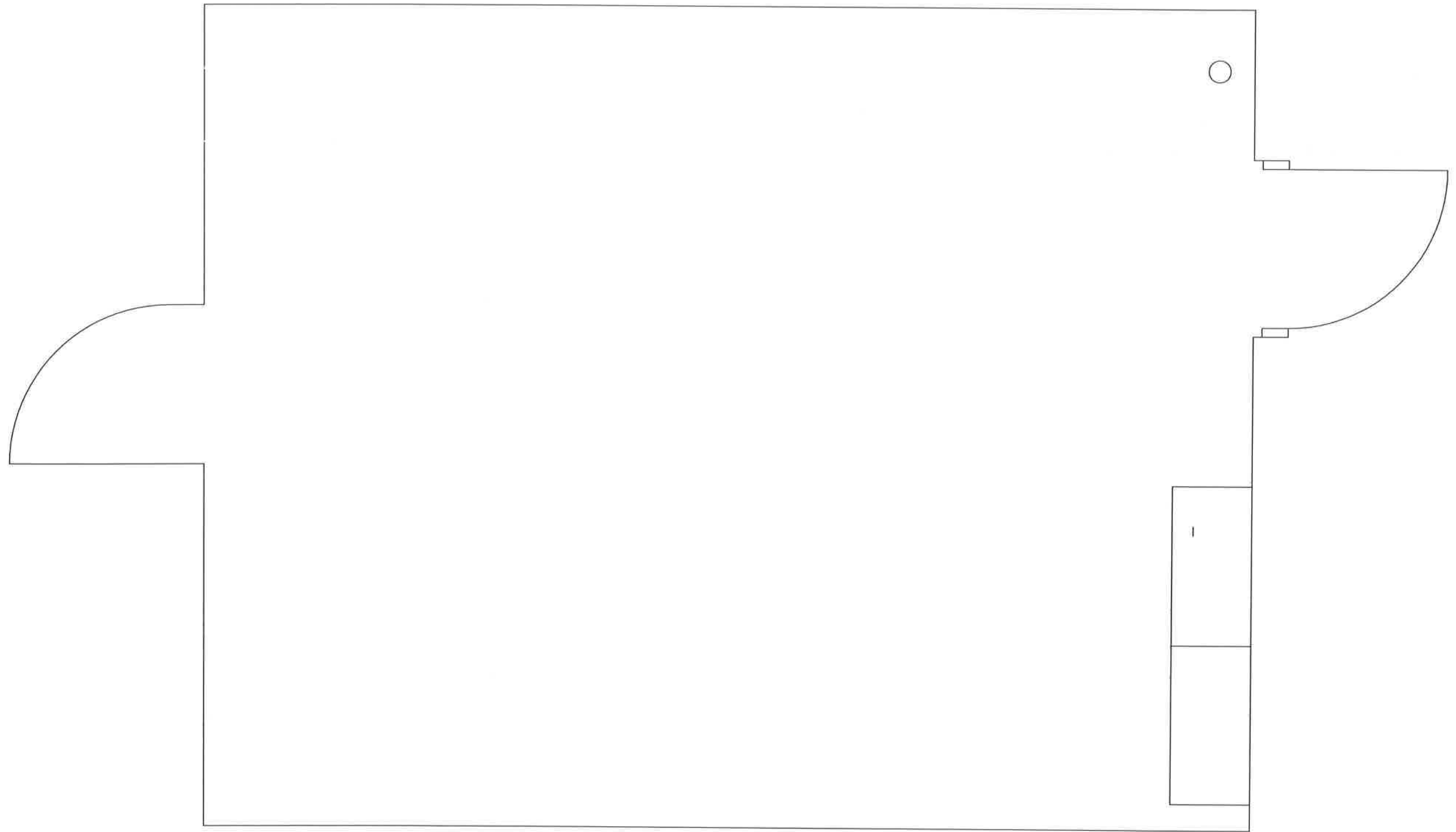
00' X 00'



8TH OFFICE
15' X 18'



9TH OFFICE



10th
OFFICE

