

# MEDICAL OFFICE SPACE FOR LEASE

4555 EMERSON PARKWAY  
JACKSONVILLE, FL



## EMERSON MEDICAL PLAZA



### PROPERTY OVERVIEW

- Three-story, 36,129-square-foot building with eye-catching façade and mature landscaping
- Variety of spaces available, ranging in square footage with move-in ready suites and full-floor opportunities
- Proximity to HCA Florida Memorial Hospital and PAM Health Specialty Hospital of Jacksonville
- Ample on-site parking and abundant nearby amenities for tenant and patient convenience
- Formally occupied by the University of Florida Health Family Medicine
- North-south connection to the East Coast via Highway 90, Highway 1, and Interstate 95



**CONTACT US  
TODAY!**

[holladayproperties.com](http://holladayproperties.com)

**321-663-3953**

Brian Wilcox, VP Brokerage Services  
[bwilcox@holladayproperties.com](mailto:bwilcox@holladayproperties.com)

**904-463-1550**

Jonah Puttbach, Associate Broker  
[jputtbach@holladayproperties.com](mailto:jputtbach@holladayproperties.com)

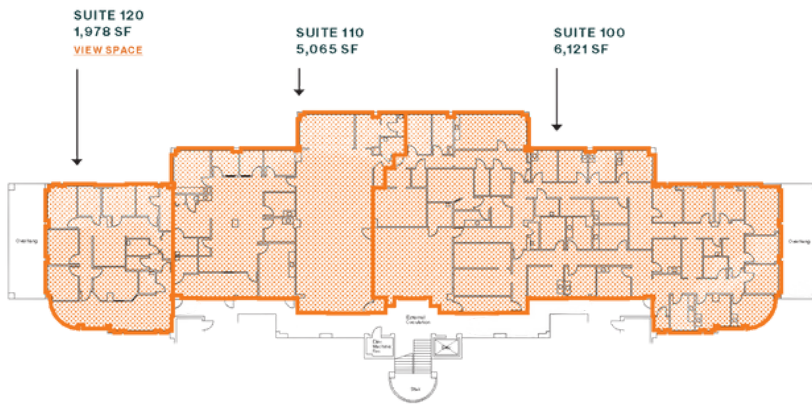
# MEDICAL OFFICE SPACE FOR LEASE

4555 EMERSON PARKWAY

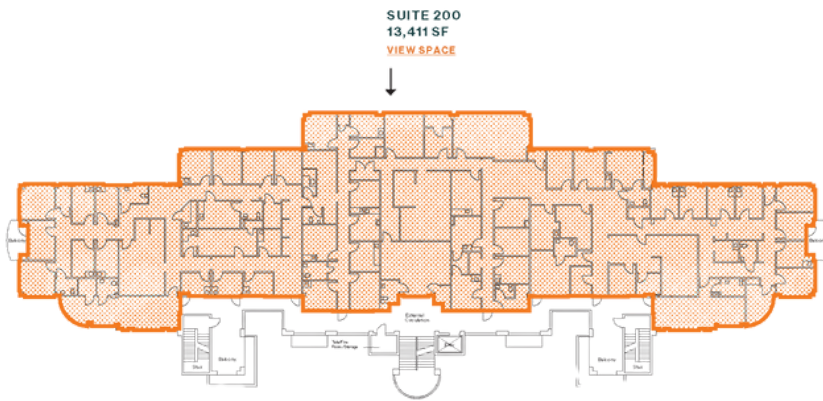
JACKSONVILLE, FL



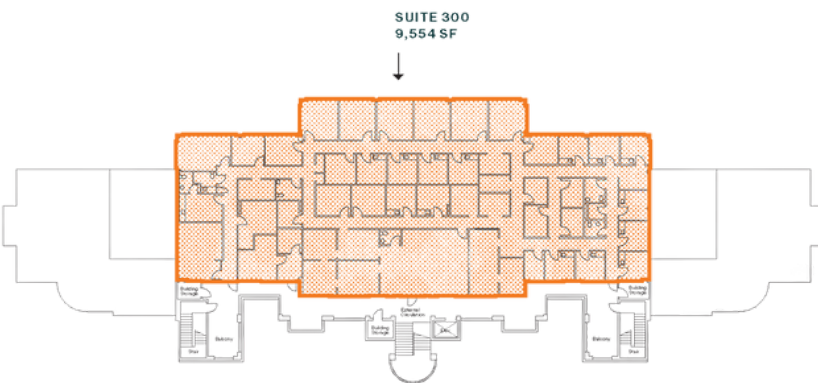
Emerson Medical Plaza at 4555 Emerson Parkway presents an exceptional opportunity for medical professionals seeking prime office space in the rapidly-growing Jacksonville market. This three-story, 36,129-square-foot building offers a variety of spaces, from move-in ready suites to full-floor opportunities.



FIRST FLOOR



SECOND FLOOR



THIRD FLOOR

CONTACT US  
TODAY!

[holladayproperties.com](http://holladayproperties.com)

321-663-3953

Brian Wilcox, VP Brokerage Services  
[bwilcox@holladayproperties.com](mailto:bwilcox@holladayproperties.com)

904-463-1550

Jonah Puttbach, Associate Broker  
[jputtbach@holladayproperties.com](mailto:jputtbach@holladayproperties.com)