

Land Prime Land Opportunity FOR SALE

Land

19112 Eastman Rd

Pacific Junction, IA 51561

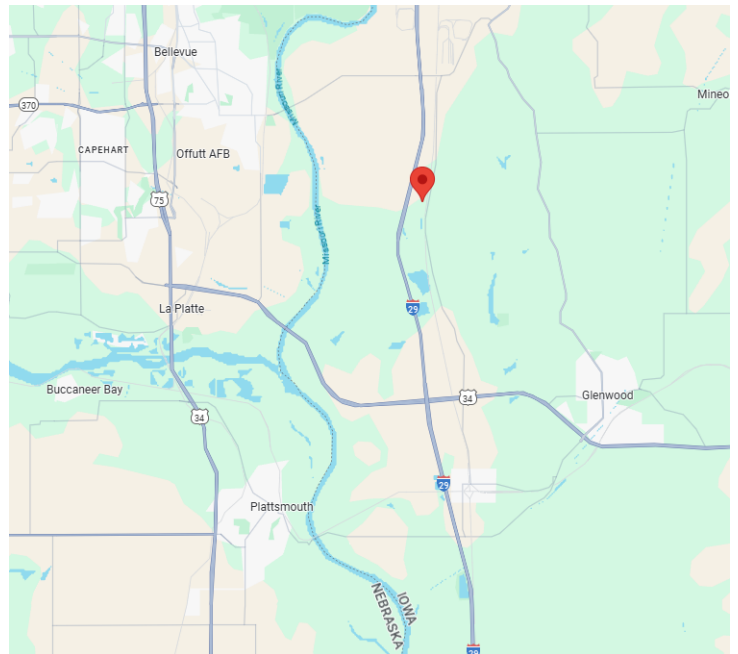
Property Highlights

- \$599,000
- 24.8 Acres
- Beautiful pond
- Tillable acres
- Flat building site



Property Description

Discover an unparalleled opportunity to own nearly 25 acres of serene, flat, and buildable land nestled alongside the breathtaking Loess Hills. This picturesque property features a large pond, perfect for fishing, or enjoying peaceful views, and is equipped with a private well and electricity, making it ready for your plans. Located just 10 minutes from Offutt Air Force Base, Metro Crossing in Council bluffs, and the Omaha metro area, it combines tranquility with convenience. Situated within Glenwood Community School District, this land offers endless possibilities for building your dream home, creating a recreational retreat, or investing in a property with exceptional potential.



Offering Summary

Available SF:	1,080,288 SF
Sale Price	\$599,,000
Lot Size	24.8 Acres
Zoning	Ag
Traffic Count	22,234

Listed By:

Blake Hunter

Cell: (402) 681-8280

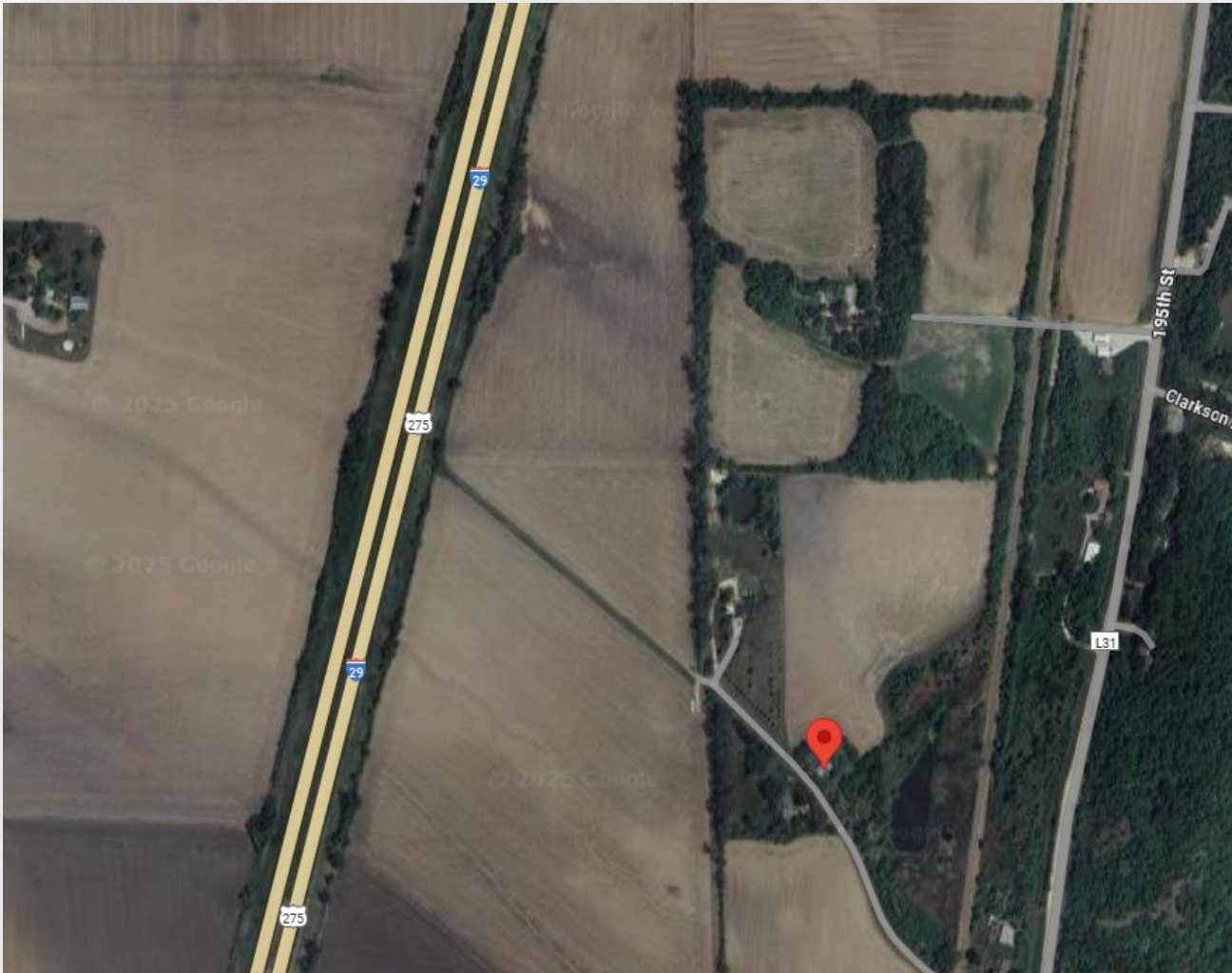
Blake.Hunter@bhhsamb.com

This information has been secured from the property owner or sources we believe to be reliable, but we make no representations or warranties, expressed or implied, as to the accuracy or completeness of the confidential information. Returns are not guaranteed and cash flow may be interrupted in part or in whole due to market, economic, environmental or other conditions. References to square footage or age are approximate. Measurements for any property plans are approximate and not to scale. Some graphics might be representations. Buyer must verify the information prior to purchase or lease and bears all risk for any inaccuracies. All marks displayed on this document are the property of their respective owners. Photos herein are the property of their respective owners and use of these images without the express written consent of the owner is prohibited. ©2019 BHH Affiliates, LLC. An independently owned and operated franchise of BHH Affiliates, LLC. Berkshire Hathaway HomeServices and the Berkshire Hathaway HomeServices symbol are registered service marks of HomeServices of America, Inc. © Equal Housing Opportunity.

PLOT AERIAL

For Sale: \$599,000

19112 Eastman Rd
Pacific Junction, IA 51561



Demographics

Proximity:	1 Mile	3 Miles	5 Miles
Total Population:	86	1,084	10,166
Households	32	404	4,093
HH Income	\$137,727	\$137,897	\$81,949

Listed By:
Blake Hunter
Cell: (402) 681-8280
Blake.Hunter@bhhsamb.com

This information has been secured from the property owner or sources we believe to be reliable, but we make no representations or warranties, expressed or implied, as to the accuracy or completeness of the confidential information. Returns are not guaranteed and cash flow may be interrupted in part or in whole due to market, economic, environmental or other conditions. References to square footage or age are approximate. Measurements for any property plans are approximate and not to scale. Some graphics might be representations. Buyer must verify the information prior to purchase or lease and bears all risk for any inaccuracies. All marks displayed on this document are the property of their respective owners. Photos herein are the property of their respective owners and use of these images without the express written consent of the owner is prohibited. ©2019 BHH Affiliates, LLC. An independently owned and operated franchise of BHH Affiliates, LLC. Berkshire Hathaway HomeServices and the Berkshire Hathaway HomeServices symbol are registered service marks of HomeServices of America, Inc. © Equal Housing Opportunity.

Berkshire Hathaway HS | Ambassador Real Estate Commercial Division
331 Village Pointe Plaza
Omaha, NE 68118
402-547-5062

**BERKSHIRE
HATHAWAY**
HOMESERVICES | AMBASSADOR
REAL ESTATE
 COMMERCIAL DIVISION™