

1701 W LEHIGH AVENUE
PHILADELPHIA, PA 19132

ON-SITE PARKING
& TREMENDOUS ACCESS
TO PUBLIC TRANSPORTATION



9,654 SF OFFICE SPACE AVAILABLE FOR LEASE



57,433 SF office and retail complex at 17th and Lehigh Ave



Three suites available

- 1st floor: 4,809 SF – 6,583 SF
- 1st floor: 897 SF
- 2nd floor: 2,174 SF



35+ car parking lot adjacent to building



Ample natural light throughout



Available suites offer mix of open space, private offices and conference rooms



Just 2 blocks from the North Philadelphia Station and North Broad Station (access to Amtrak, Broad Street Subway, Lansdale/Doylestown Regional Rail Line and Manayunk/Norristown Regional Rail Line) as well as multiple SEPTA bus routes



Owned and managed by well-capitalized local ownership



Rental rate = \$13.50 per SF + utilities

EXCLUSIVELY
REPRESENTED BY
THE FLYNN COMPANY

BRENDAN FLYNN
BFLYNN@FLYNNCO.COM
215-561-6565 X 152

MICHAEL GALLAGHER
MGALLAGHER@FLYNNCO.COM
215-561-6565 X 151

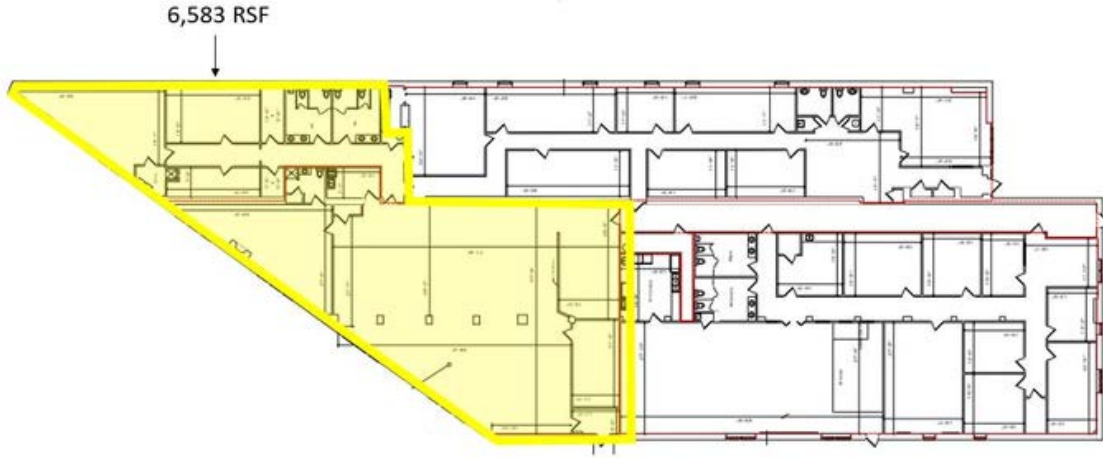
JOSEPH NASELLI
JNASELLI@FLYNNCO.COM
215-561-6565 X 155

The
Flynn
Company

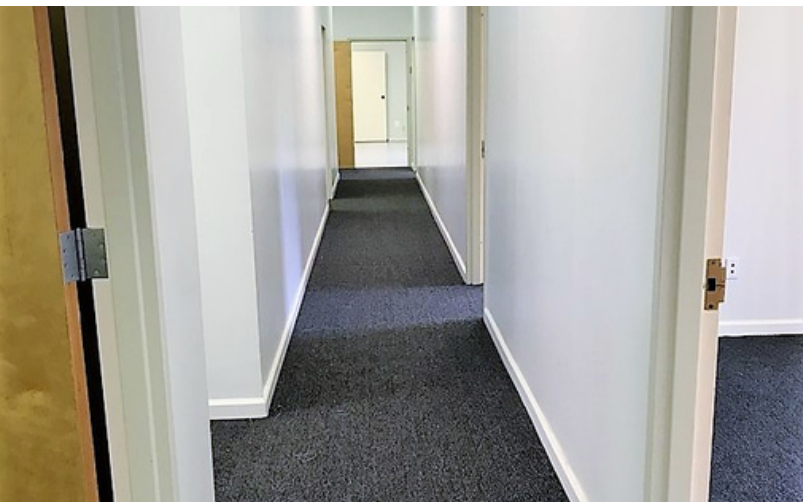
THE FLYNN COMPANY

WWW.FLYNNCO.COM | 1621 WOOD STREET, PHILADELPHIA, PA 19103 | 215.561.6565

FLOOR PLAN



PHOTOS



**FOR MORE
INFORMATION, CONTACT
THE FLYNN COMPANY**

BRENDAN FLYNN
BFLYNN@FLYNNCO.COM
215-561-6565 X 152

MICHAEL GALLAGHER
MGALLAGHER@FLYNNCO.COM
215-561-6565 X 151

JOSEPH NASELLI
JNASELLI@FLYNNCO.COM
215-561-6565 X 155