



31875 Corydon Rd. Suite 150

31875 Corydon Rd. 150, Lake Elsinore, CA 92530



Kelli Jones

Equity Management

42430 Winchester Rd, Temecula, CA 92590

kjones@equitymgt.com

(951) 326-7227



31875 Corydon Rd. 150

\$1,426,510

For sale: Corner unit in Blue Lake Business Park, facing the racetrack. This unit is approximately 4,919 sq. ft. and features:

- 3 offices upstairs
- Front reception area
- Workroom in warehouse
- Two restrooms (one upstairs, one downstairs)
- Two HVAC units

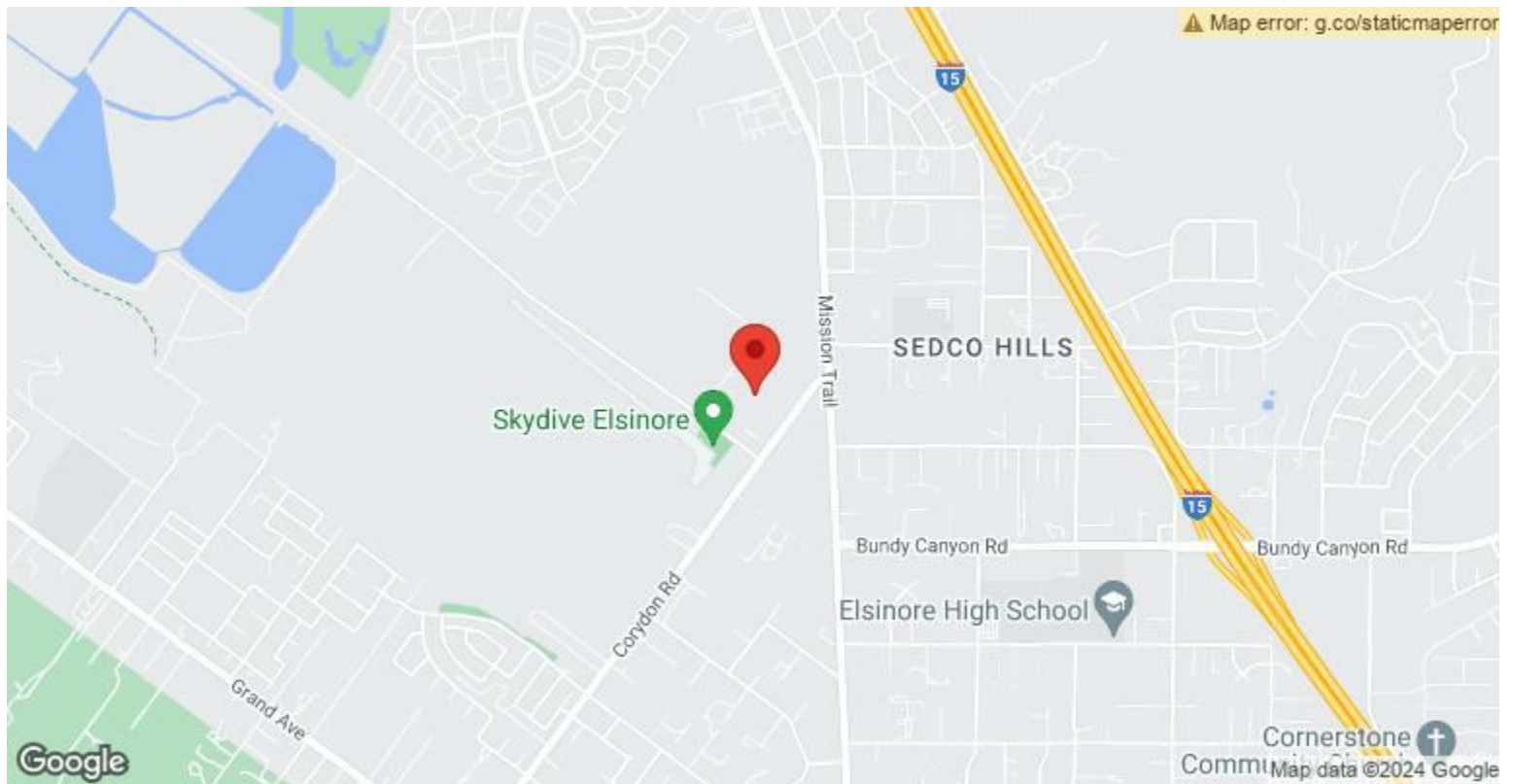
Conveniently...

Great location...

- Corner Unit



Price:	\$1,426,510
Unit Size:	4,919 SF
No. Units:	1
Total Building Size:	16,130 SF
Property Type:	Industrial
Property Subtype:	Manufacturing
Sale Type:	Investment or Owner User
Building Class:	B
Floors:	1
Typical Floor Size:	4,919 SF
Year Built:	2005
Lot Size:	2.83 AC
Parking Ratio:	18.5/1,000 SF



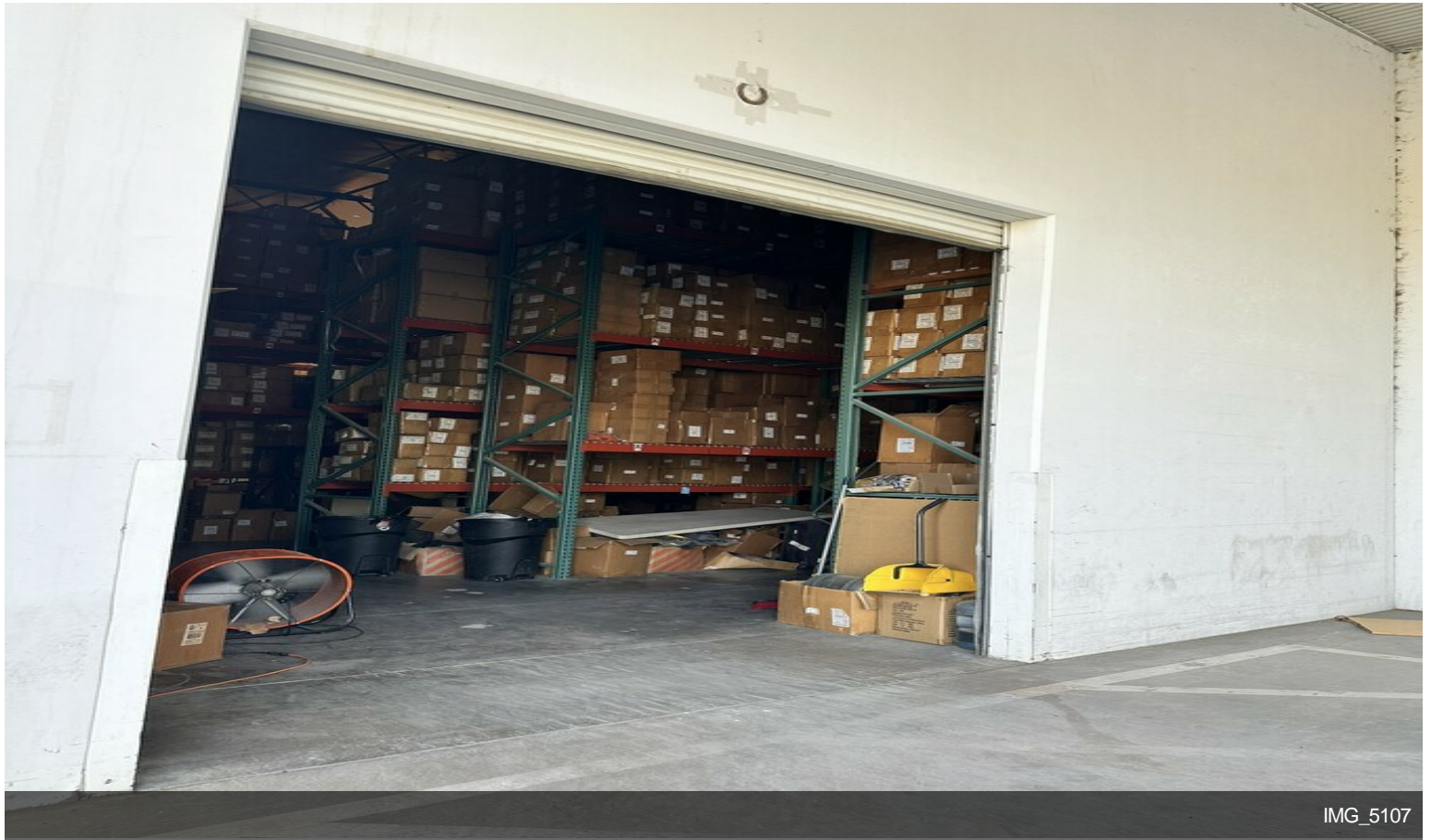
31875 Corydon Rd. 150, Lake Elsinore, CA 92530

For sale: Corner unit in Blue Lake Business Park, facing the racetrack. This unit is approximately 4,919 sq. ft. and features:

- 3 offices upstairs
- Front reception area
- Workroom in warehouse
- Two restrooms (one upstairs, one downstairs)
- Two HVAC units

Conveniently located near the I-15 freeway.

Property Photos

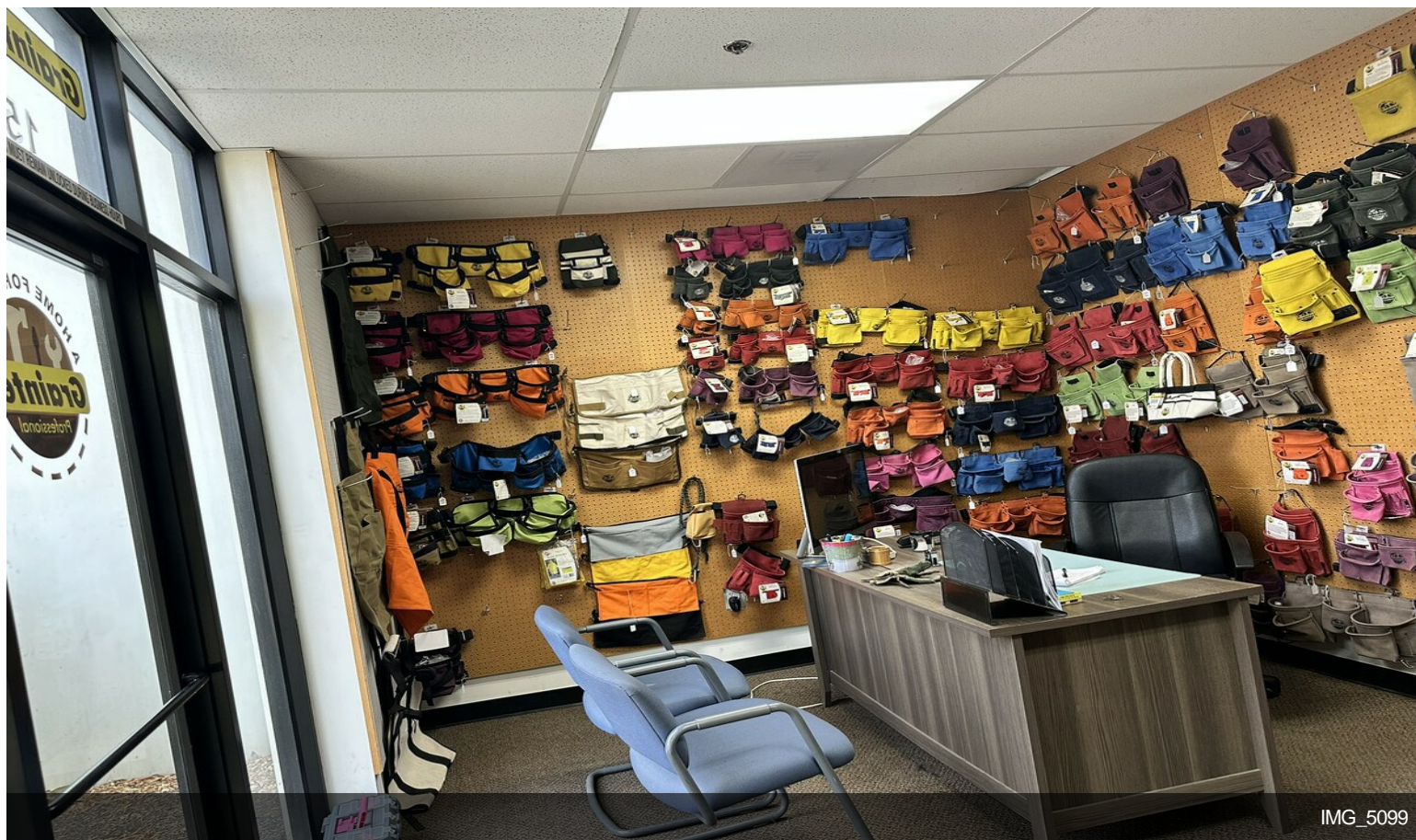


IMG_5107

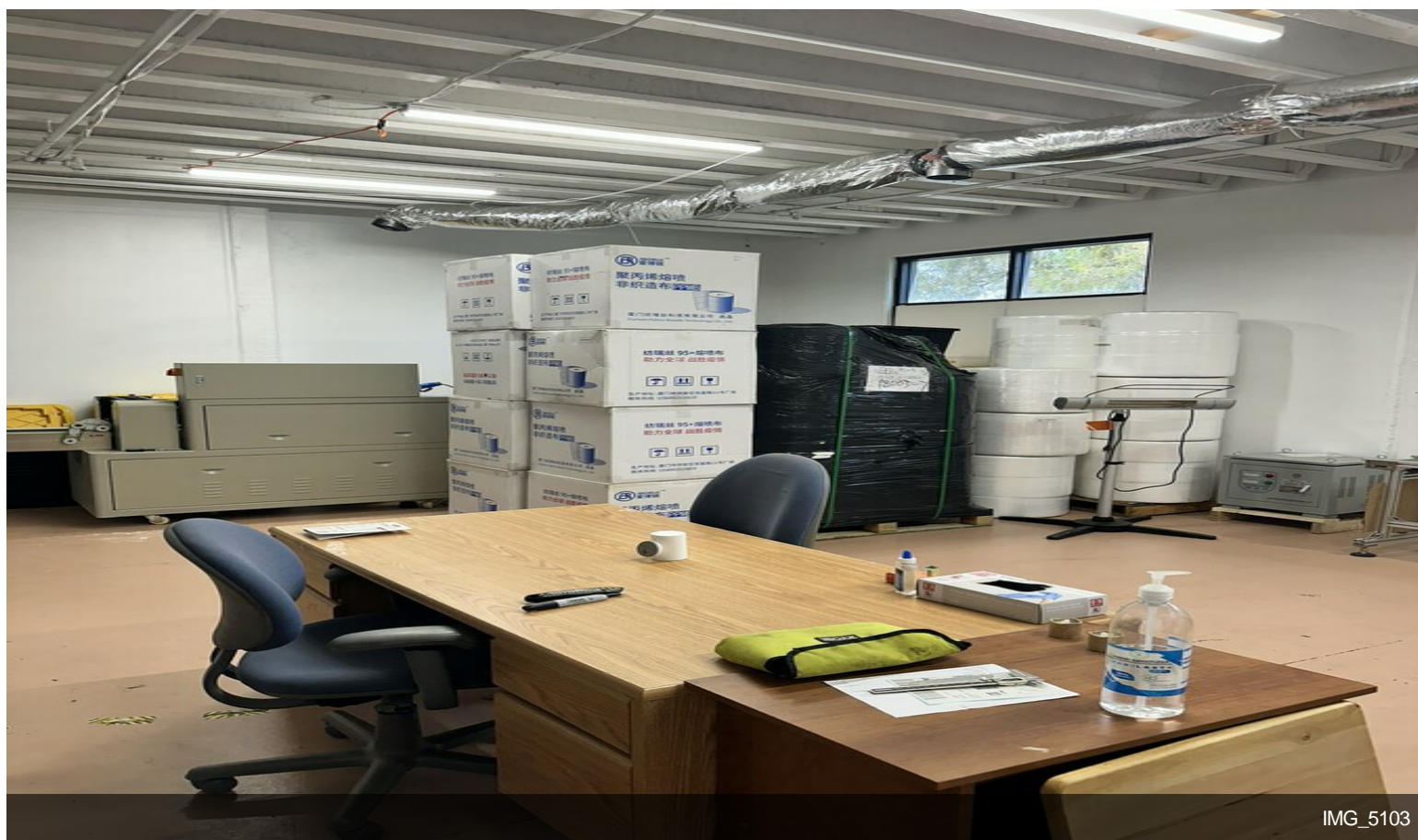


IMG_5109

Property Photos

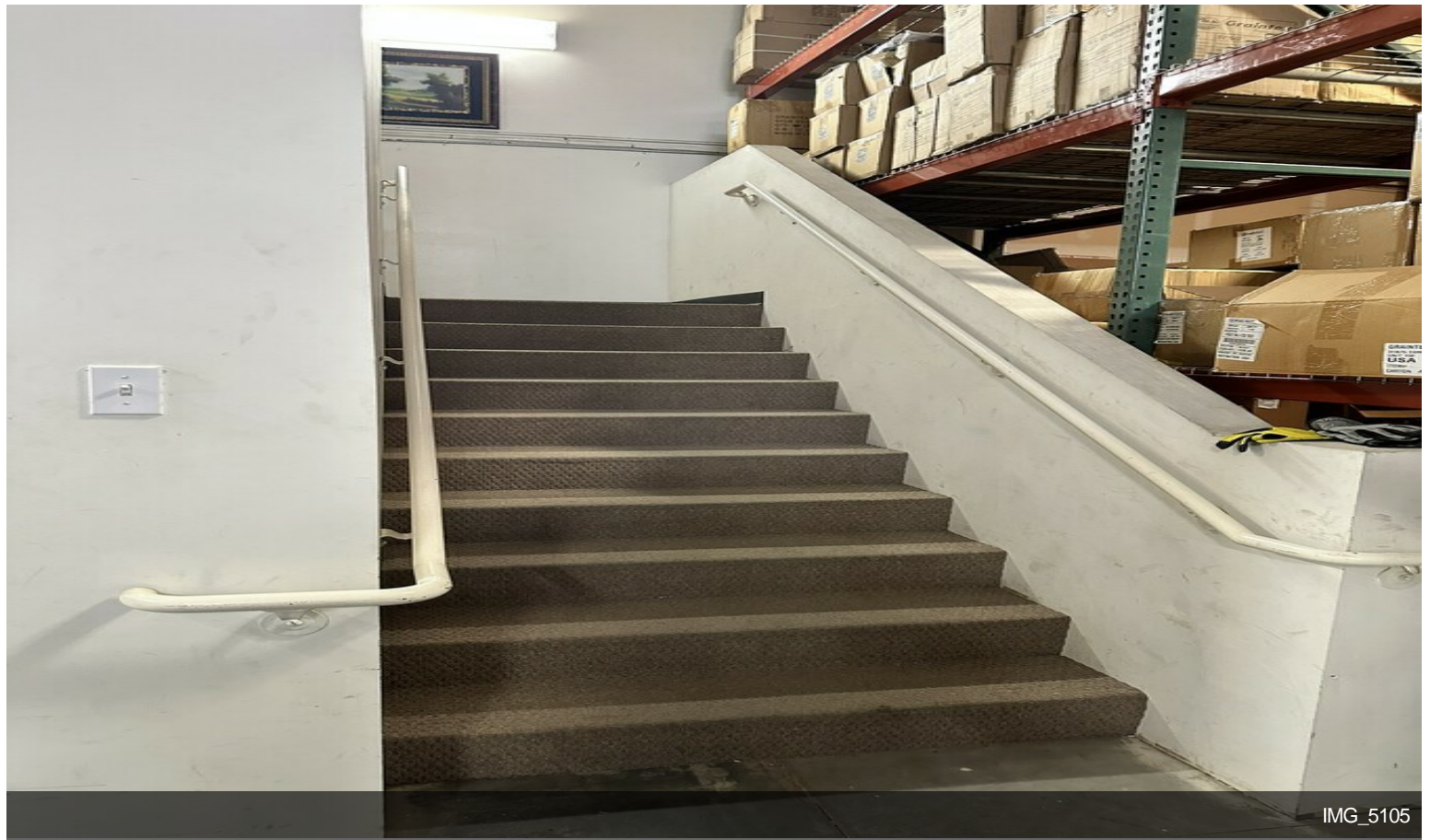


IMG_5099



IMG_5103

Property Photos

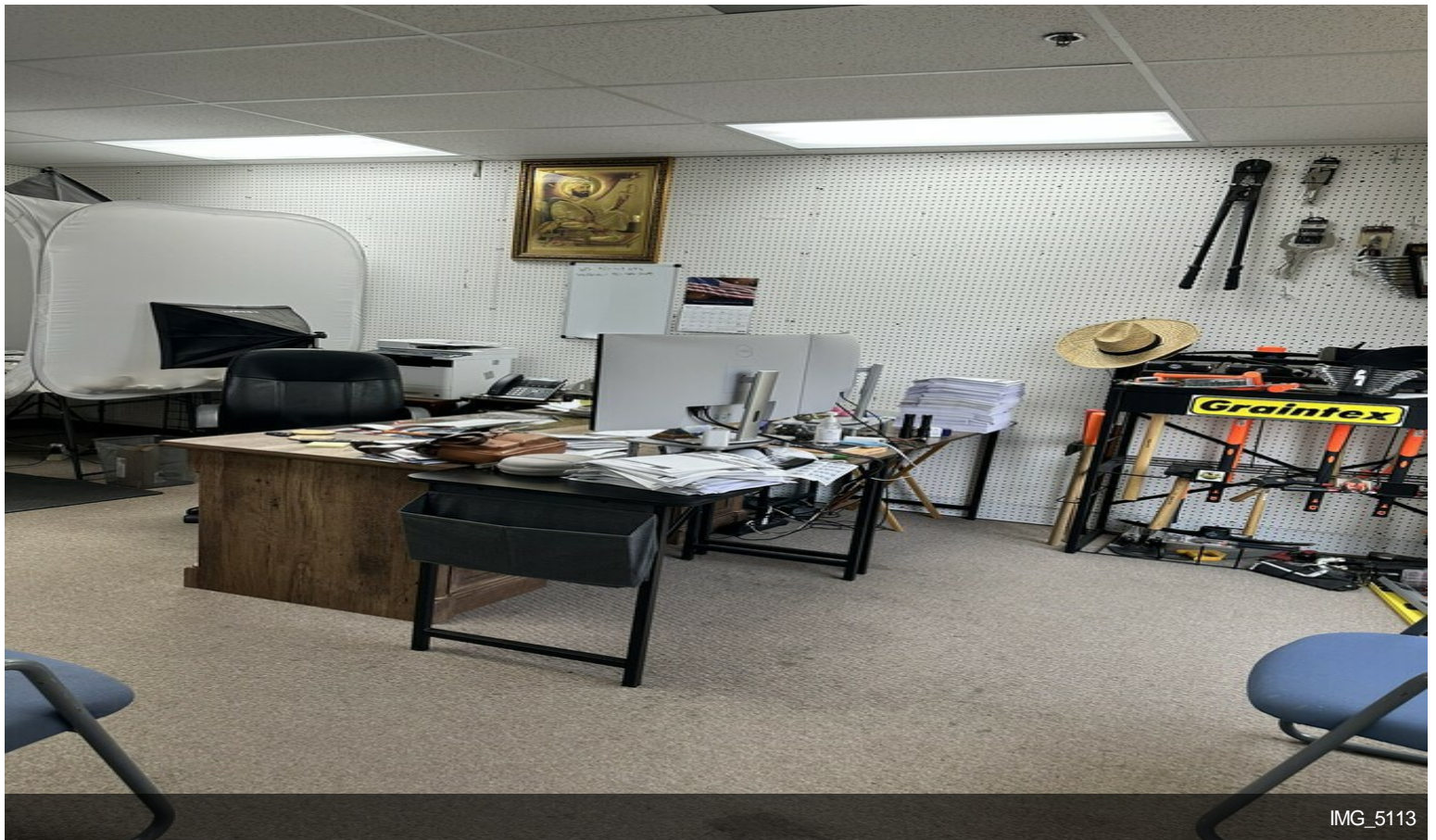
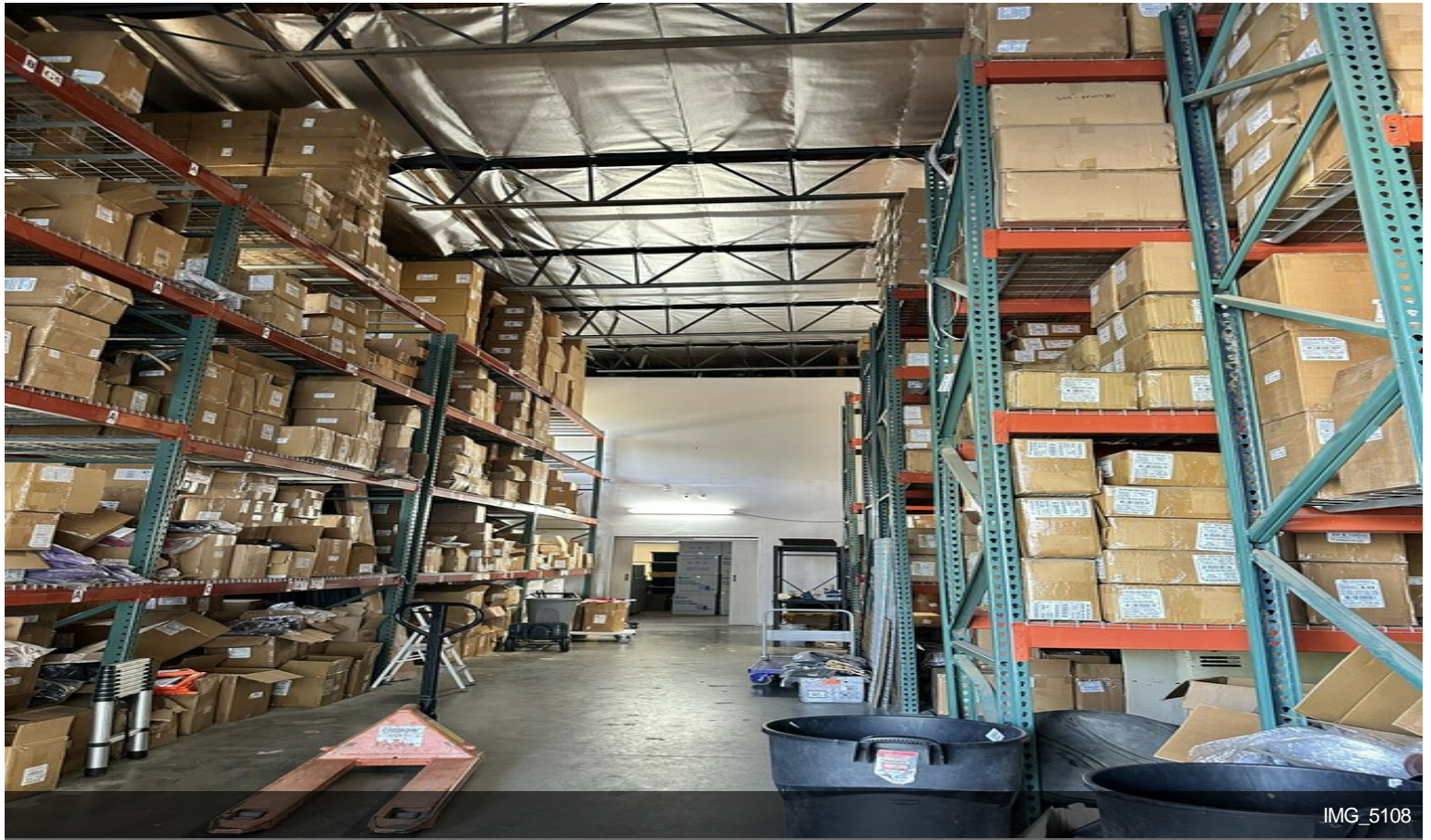


IMG_5105

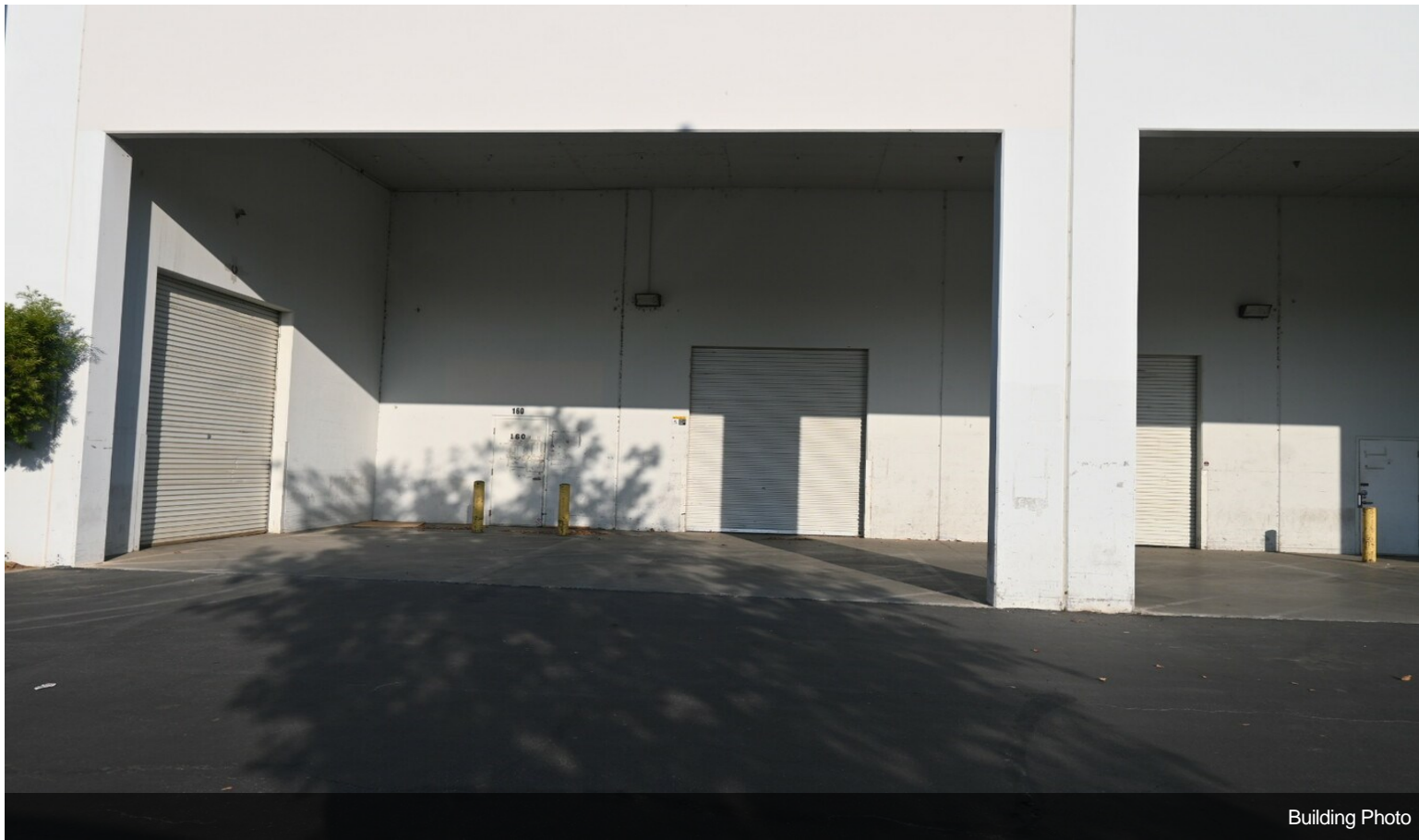


IMG_5106

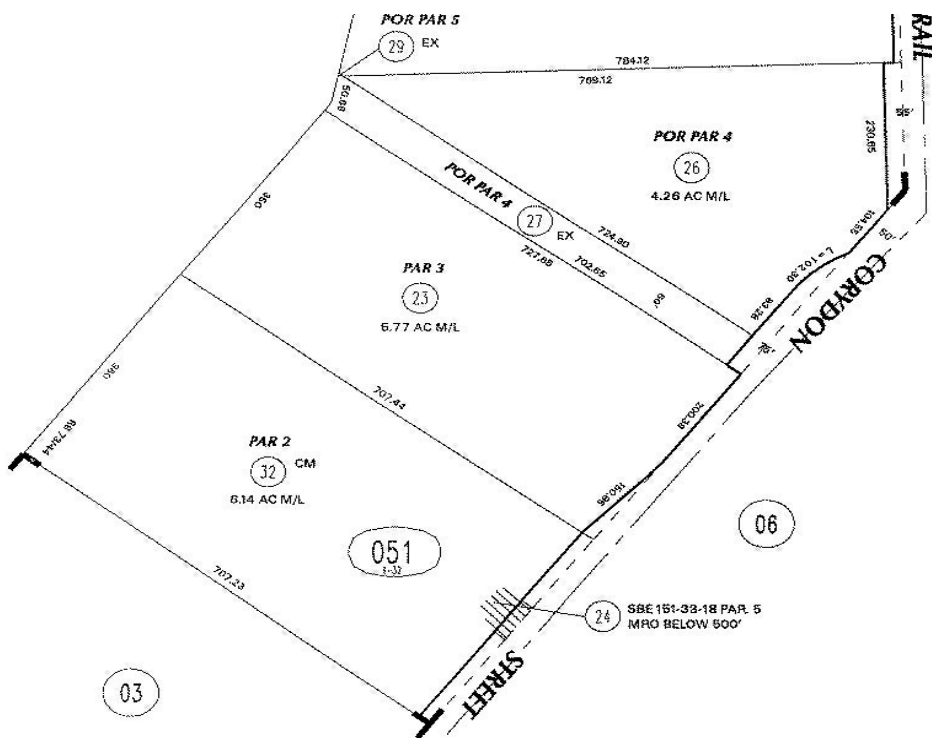
Property Photos



Property Photos



Building Photo



35, R. 4W
T. 15N R. 06E

366
13

T. R. A. 005-026

3700
19-25
SHEET 1 OF 1

RS 73/44
CM 148/177 PAR 2 #0441925 06/02/05

Dec 2007

DATE	BY	REVISION
07/79		001 INITIAL
07/83		002
07/83		003
07/83		004
07/83		005
07/83		006
07/83		007
07/83		008
07/83		009
07/83		010
07/83		011
07/83		012
07/83		013
07/83		014
07/83		015
07/83		016
07/83		017
07/83		018
07/83		019
07/83		020
07/83		021
07/83		022
07/83		023
07/83		024
07/83		025
07/83		026
07/83		027
07/83		028
07/83		029
07/83		030
07/83		031
07/83		032
07/83		033
07/83		034
07/83		035
07/83		036
07/83		037
07/83		038
07/83		039
07/83		040
07/83		041
07/83		042
07/83		043
07/83		044
07/83		045
07/83		046
07/83		047
07/83		048
07/83		049
07/83		050
07/83		051
07/83		052
07/83		053
07/83		054
07/83		055
07/83		056
07/83		057
07/83		058
07/83		059
07/83		060
07/83		061
07/83		062
07/83		063
07/83		064
07/83		065
07/83		066
07/83		067
07/83		068
07/83		069
07/83		070
07/83		071
07/83		072
07/83		073
07/83		074
07/83		075
07/83		076
07/83		077
07/83		078
07/83		079
07/83		080
07/83		081
07/83		082
07/83		083
07/83		084
07/83		085
07/83		086
07/83		087
07/83		088
07/83		089
07/83		090
07/83		091
07/83		092
07/83		093
07/83		094
07/83		095
07/83		096
07/83		097
07/83		098
07/83		099
07/83		100