

±4,500 SF Theatre/Studio/Events

FOR SALE

2823 Church Street, East Point, GA 30344



PROPERTY HIGHLIGHTS

- Zoned public assembly
- 14 parking spaces on Site
- Available street parking
- 45 parking spaces nextdoor
- Marta one block away
- 18 ft clear height in ±2,400 SF of space
- 3 phase power
- 65 x 35 ft room unobstructed
- 200 amp camlock power connections
- 150 person capacity limit
- Black box theatre seats 67
- White box seats 45
- Lobby seats 30



SALE PRICE:
\$675,000



BUILDING SIZE:
±4,500 SF



SITE SIZE:
0.26 AC



ZONING:
CR

Virtual WalkthroughTour

Information contained herein may have been provided by the seller, landlord or other outside sources. While deemed reliable, it may be estimated, projected, limited in scope and is subject to change or inaccuracies. Pertinent information should be independently confirmed prior to lease or purchase offer or within an applicable due diligence period.



AUSTIN BULL
404-876-1640 x175
Austin@BullRealty.com



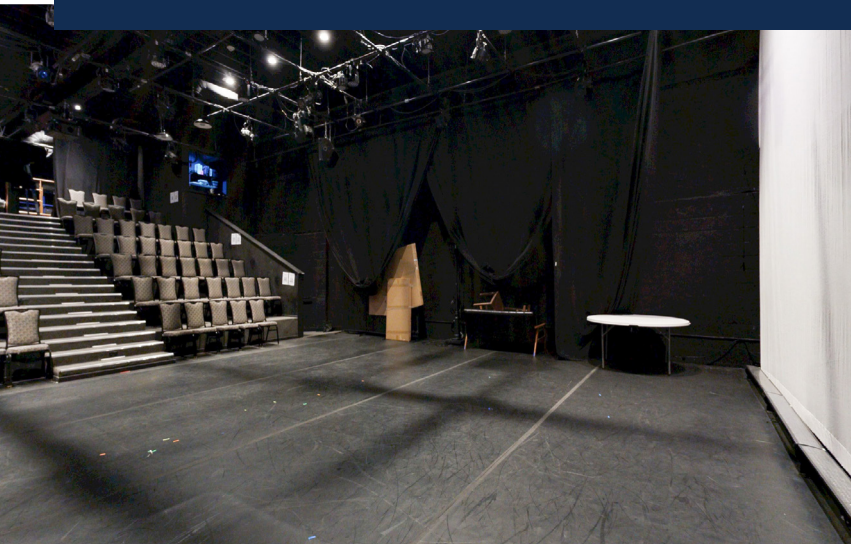
MICHAEL BULL
404-876-1640 x101
Michael@BullRealty.com

BULL REALTY, INC.
50 Glenlake Parkway
Suite 600
Atlanta, GA 30328
BullRealty.com

±4,500 SF Theatre/Studio/Events

FOR SALE

2823 Church Street, East Point, GA 30344



CONTACT



AUSTIN BULL
404-876-1640 x175
Austin@BullRealty.com



MICHAEL BULL
404-876-1640 x101
Michael@BullRealty.com

BULL REALTY, INC.
50 Glenlake Parkway
Suite 600
Atlanta, GA 30328
BullRealty.com

±4,500 SF Theatre/Studio/Events

FOR SALE

2823 Church Street, East Point, GA 30344



CONTACT



AUSTIN BULL
404-876-1640 x175
Austin@BullRealty.com



MICHAEL BULL
404-876-1640 x101
Michael@BullRealty.com

BULL REALTY, INC.
50 Glenlake Parkway
Suite 600
Atlanta, GA 30328
BullRealty.com

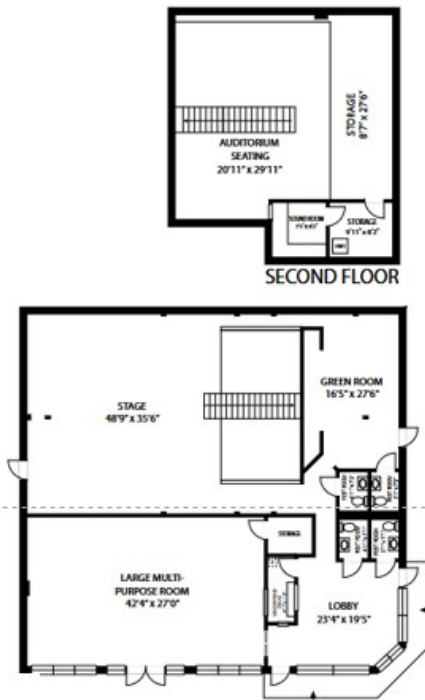
±4,500 SF Theatre/Studio/Events

FOR SALE

2823 Church Street, East Point, GA 30344



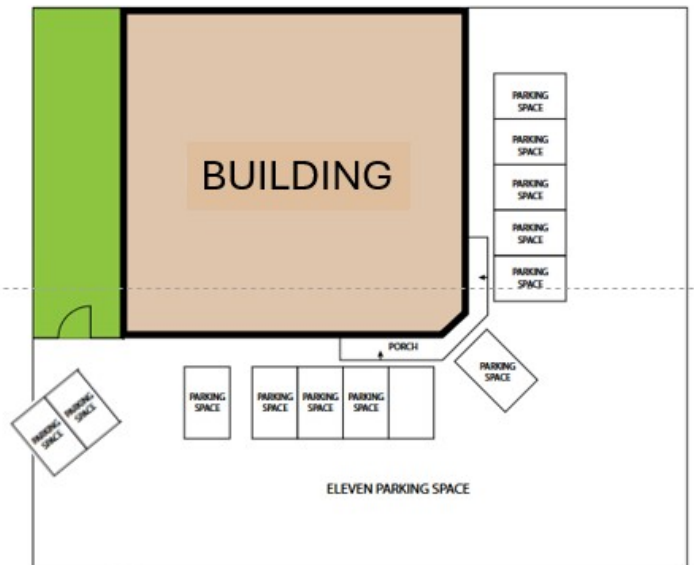
Floor Plan



FIRST FLOOR

2823 Church Street, Atlanta, GA, 30344

Whilst every attempt has been made to ensure the accuracy of the floor plan contained here, measurements of doors, windows, rooms and any other items are approximate and no responsibility is taken for any error, omission, or misstatement. This plan is for illustrative purposes only and should be used as such by any prospective purchaser.



CONTACT



AUSTIN BULL
404-876-1640 x175
Austin@BullRealty.com



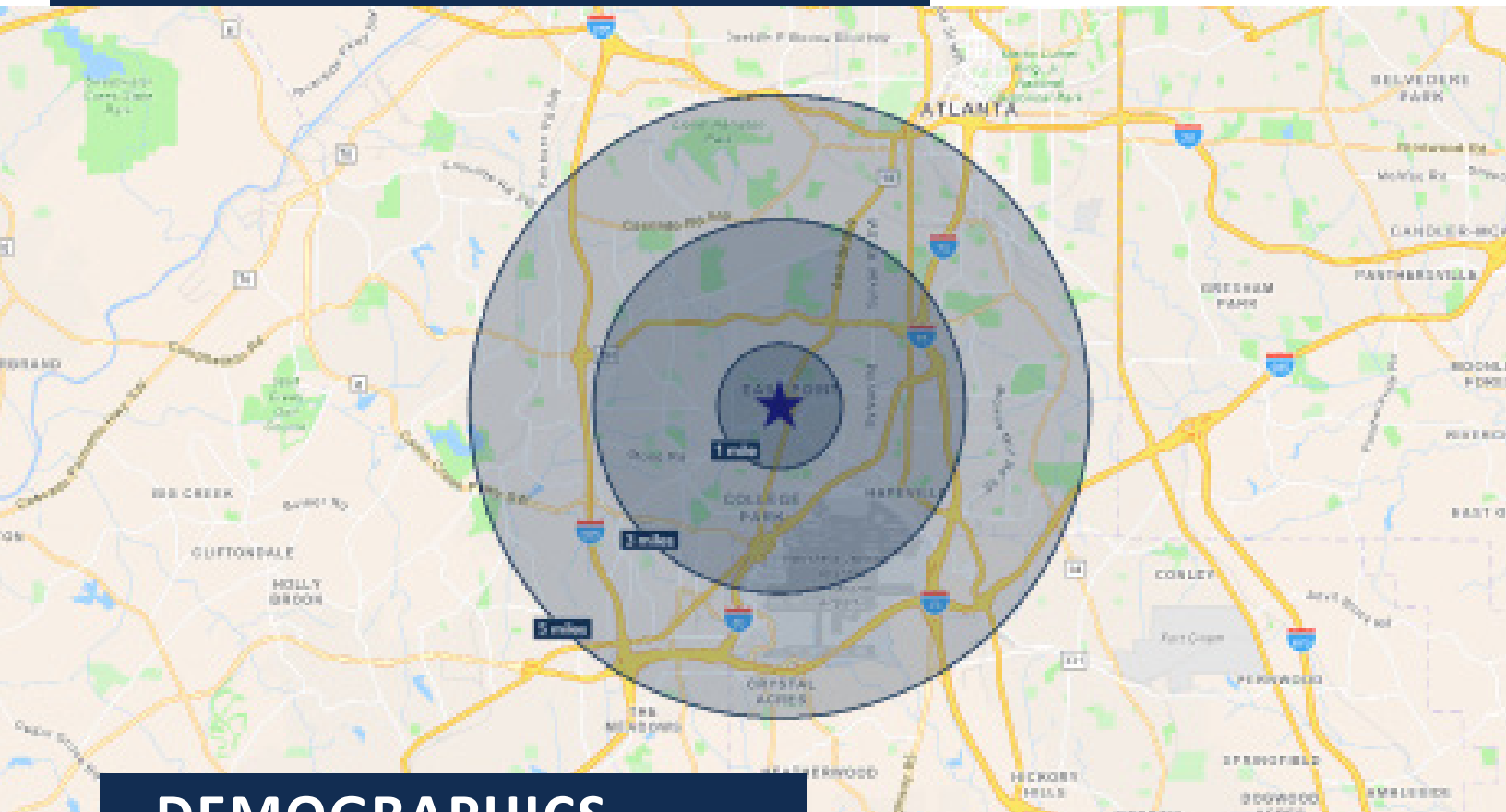
MICHAEL BULL
404-876-1640 x101
Michael@BullRealty.com

BULL REALTY, INC.
50 Glenlake Parkway
Suite 600
Atlanta, GA 30328
BullRealty.com




±4,500 SF Theatre/Studio/Events

FOR SALE

2823 Church Street, East Point, GA 30344



DEMOGRAPHICS

	1-Mile	3-Mile	5-Mile
 Population	9,759	70,802	176,703
 Households	4,288	30,807	75,329
 Avg. Household Income	\$77,572	\$74,021	\$73,543

Source: 2024 ESRI

Information contained herein may have been provided by the seller, landlord or other outside sources. While deemed reliable, it may be estimated, projected, limited in scope and is subject to change or inaccuracies. Pertinent information should be independently confirmed prior to lease or purchase offer or within an applicable due diligence period.

CONTACT



AUSTIN BULL
404-876-1640 x175
Austin@BullRealty.com



MICHAEL BULL
404-876-1640 x101
Michael@BullRealty.com

BULL REALTY, INC.
50 Glenlake Parkway
Suite 600
Atlanta, GA 30328
BullRealty.com