

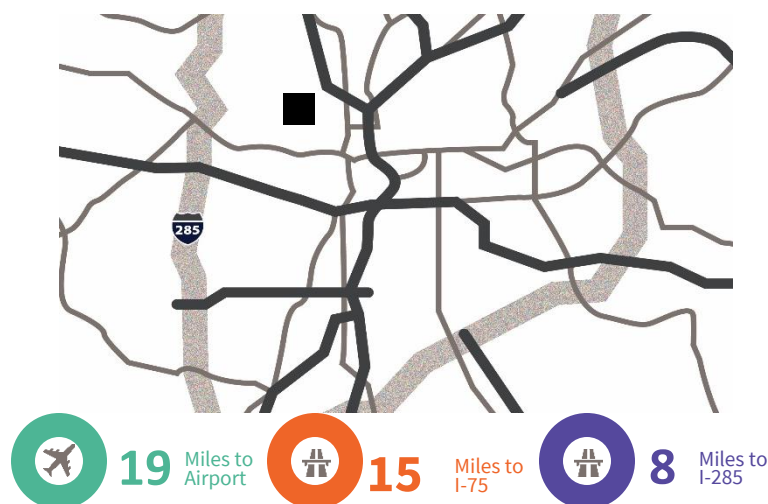


580 Wharton Drive, Ste A, Atlanta, GA

Opportunity

- 42,000 sf available
- 1,619 sf of office
- 60,000 total building size
- 30' x 50'7 bay size
- 201'2 building depth
- Sprinklered
- 23' Clear Height
- Doors – 5 DH

Location



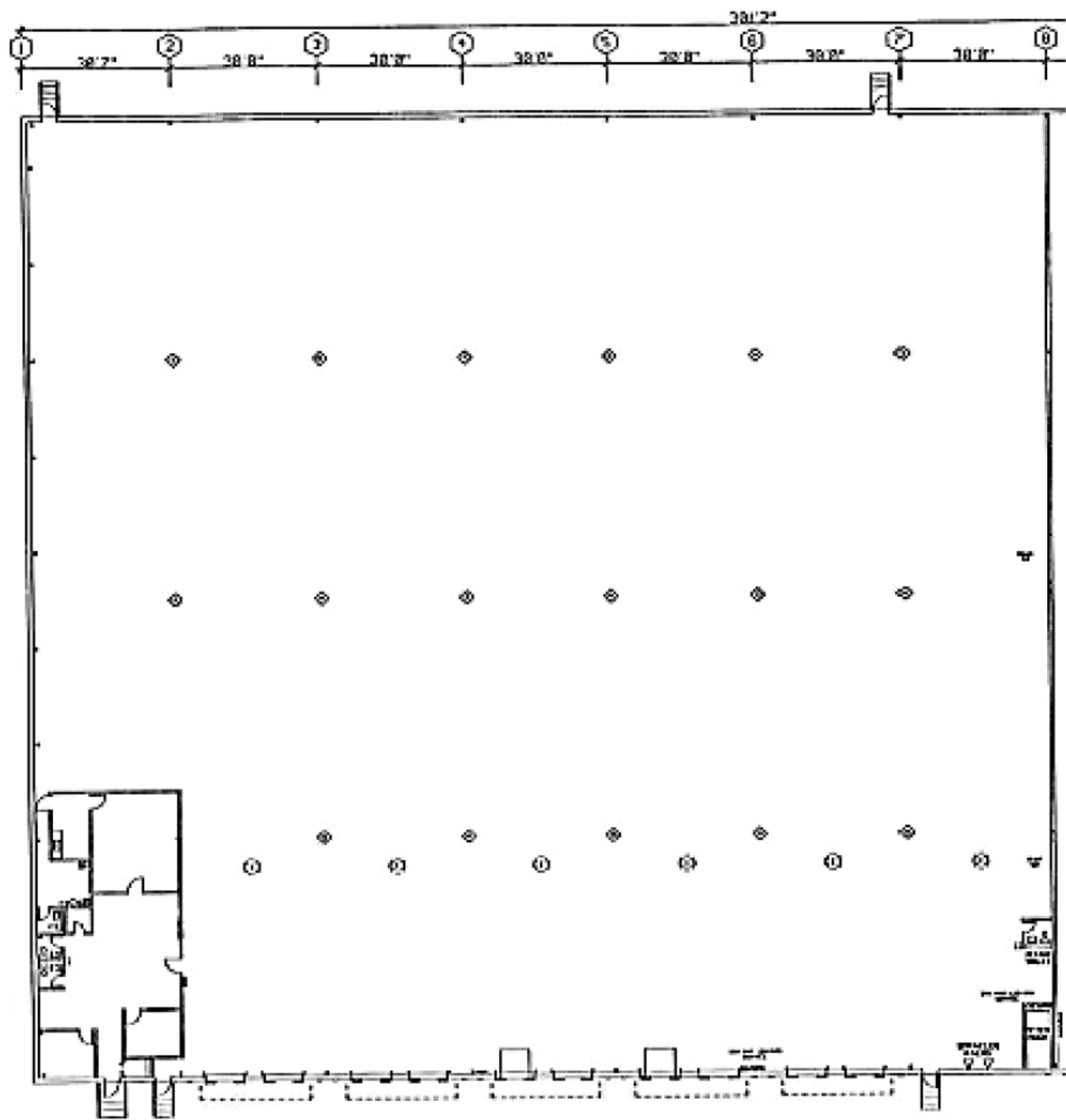
**For further
information**

Bruce Logue
Principal
+1 770 916 6150

avisonyoung.com

Industrial For Lease

580 Wharton Drive, Ste A, Atlanta, GA



For further information



Bruce Logue
Principal
+1 770 916 6150
bruce.logue@avisonyoung.com

Owned by:

