



THE RETAIL AT
11 WEIRFIELD STREET

BUSHWICK, BROOKLYN



ACTIVE LISTING

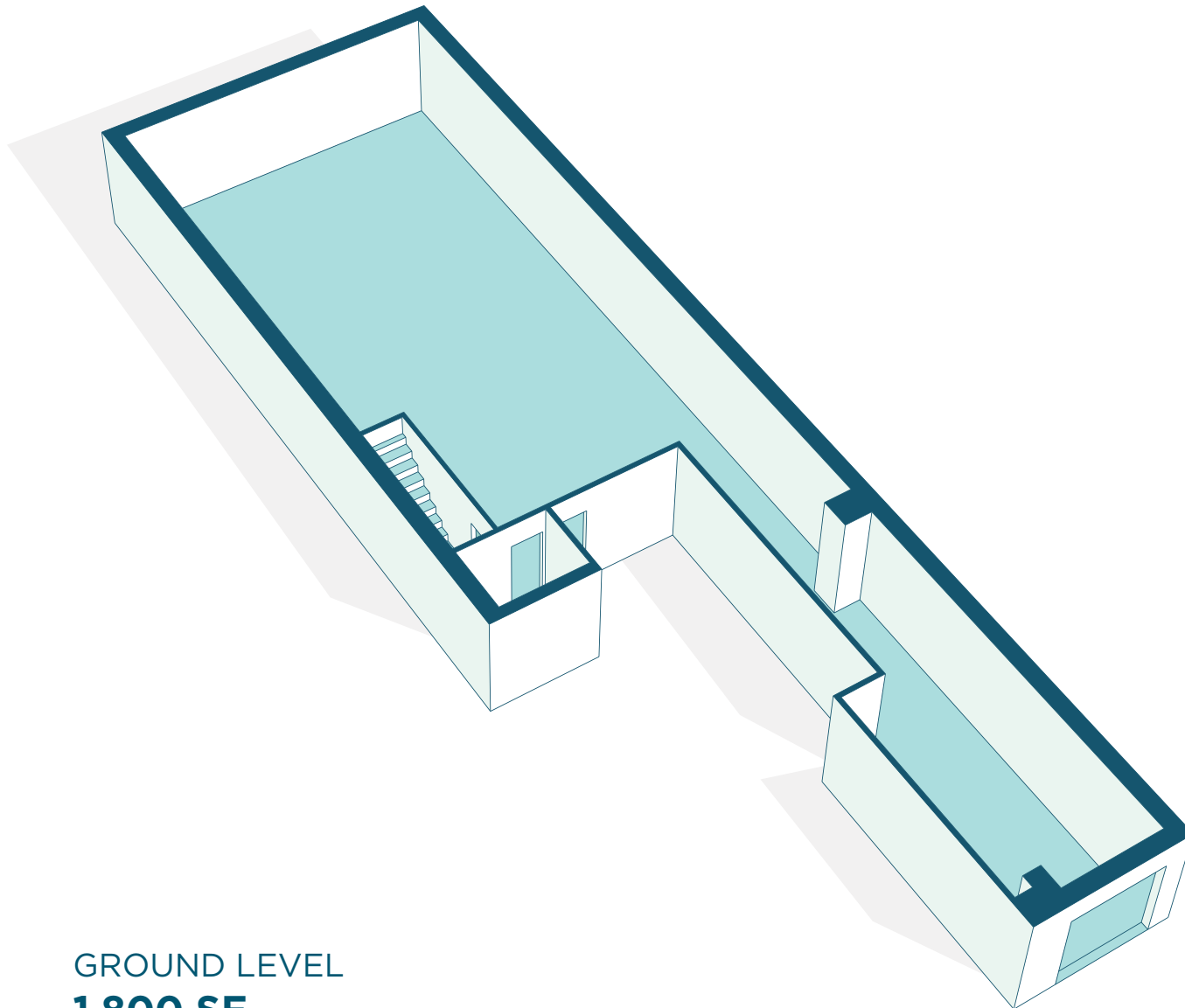
SPACE HIGHLIGHTS

SPACE		GROUND LEVEL/LOWER LEVEL
AVAILABLE SPACES	GF-1,800 SF / LL-1,200 SF	DESCRIPTION Welcome to an exceptional retail space for lease at 11 Weirfield St, Brooklyn, NY 11221, USA. This property offers a fantastic opportunity for retailers in a thriving Brooklyn neighborhood. The retail space features 1,800 sqft on the ground floor and a 1,200 sqft basement, providing ample room for product display and customer interaction. The layout is well-designed for merchandise arrangement and customer flow. Located in a vibrant neighborhood, 11 Weirfield St benefits from steady foot traffic and proximity to amenities, shops, and public transportation. Suitable for various businesses such as boutiques, cafes, galleries, and concept stores, this space capitalizes on the diverse customer demographics and eclectic atmosphere of the neighborhood.
LOCATION	Bushwick Ave & Broadway	
CEILING HEIGHT	8.3 FT	
FRONTAGE	10 FT	
ZONING	R6	
DIMENSIONS	Variable	
OCCUPANCY	Immediate	
ASKING PRICE	\$40 PSF	

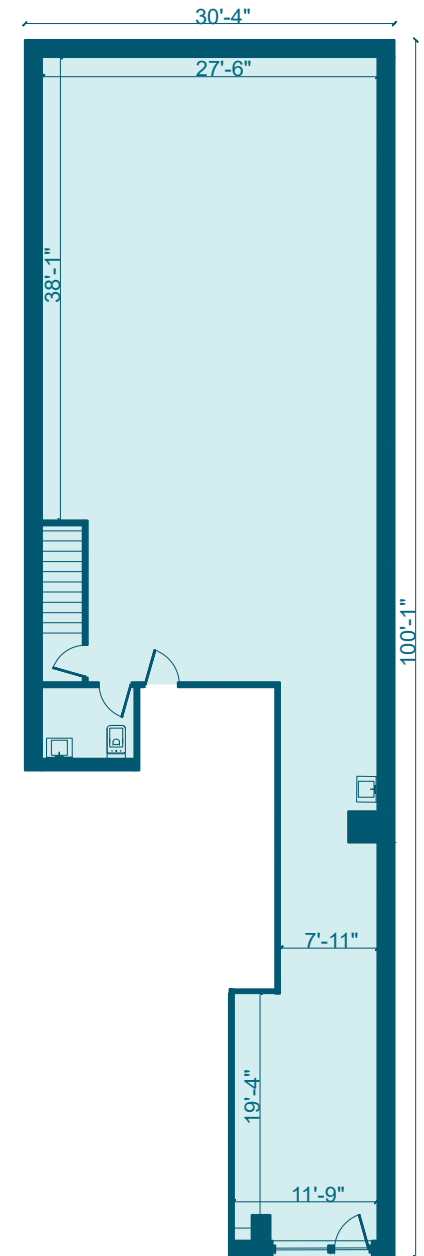
BUSHWICK BROOKLYN

FLOORPLANS & DETAILS

11 WEIRFIELD STREET



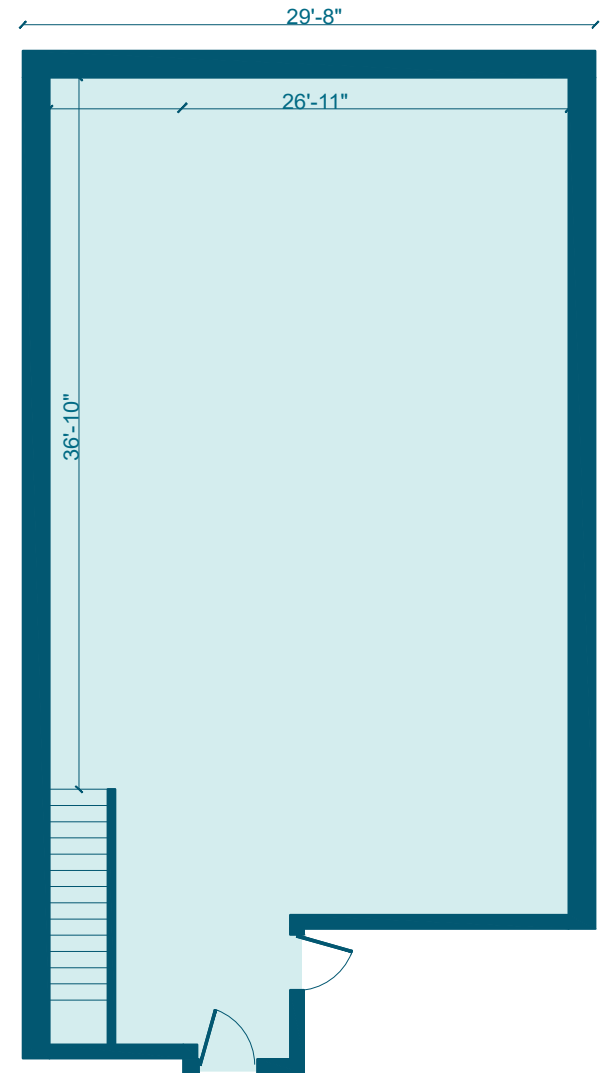
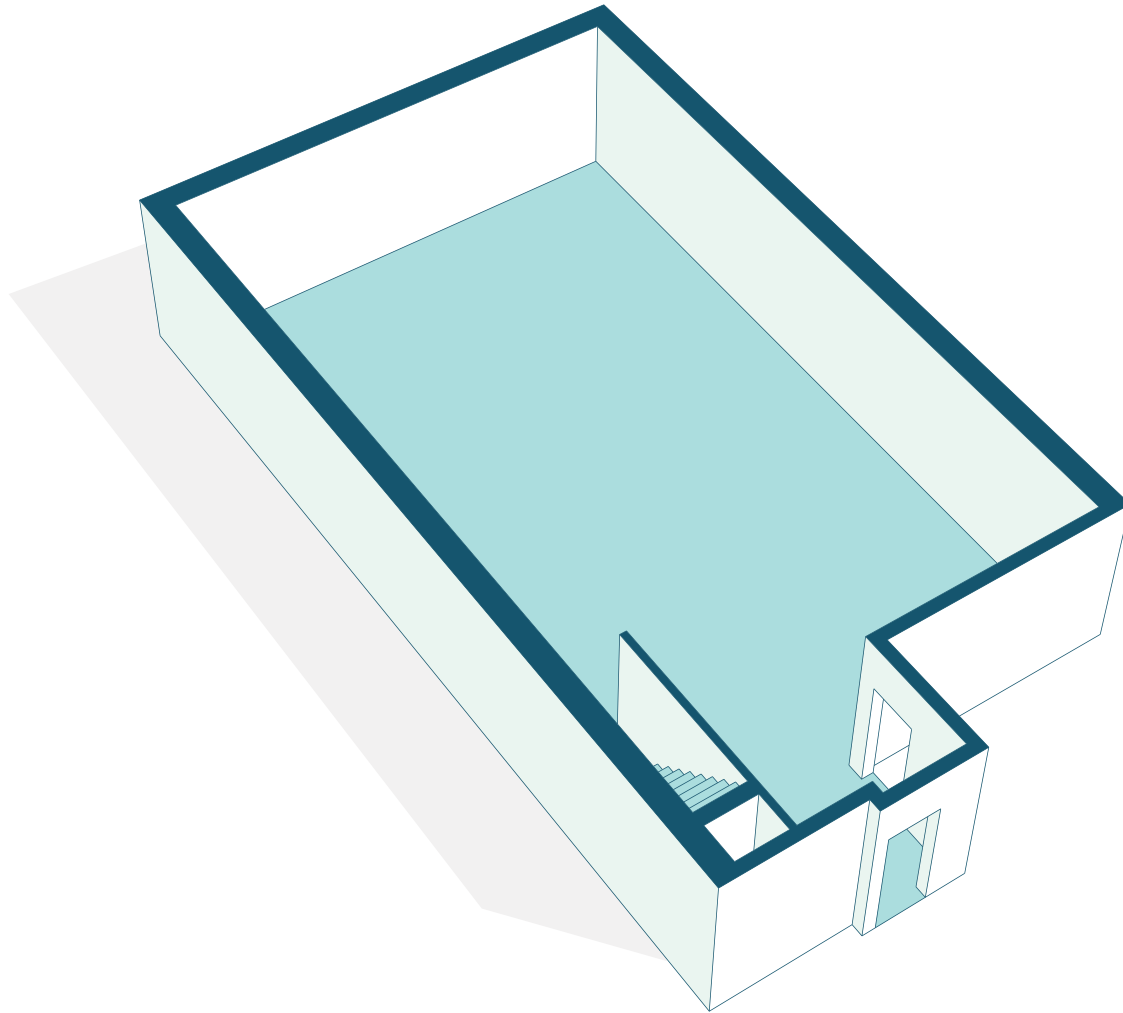
GROUND LEVEL
1,800 SF



BUSHWICK BROOKLYN

FLOORPLANS & DETAILS

11 WEIRFIELD STREET

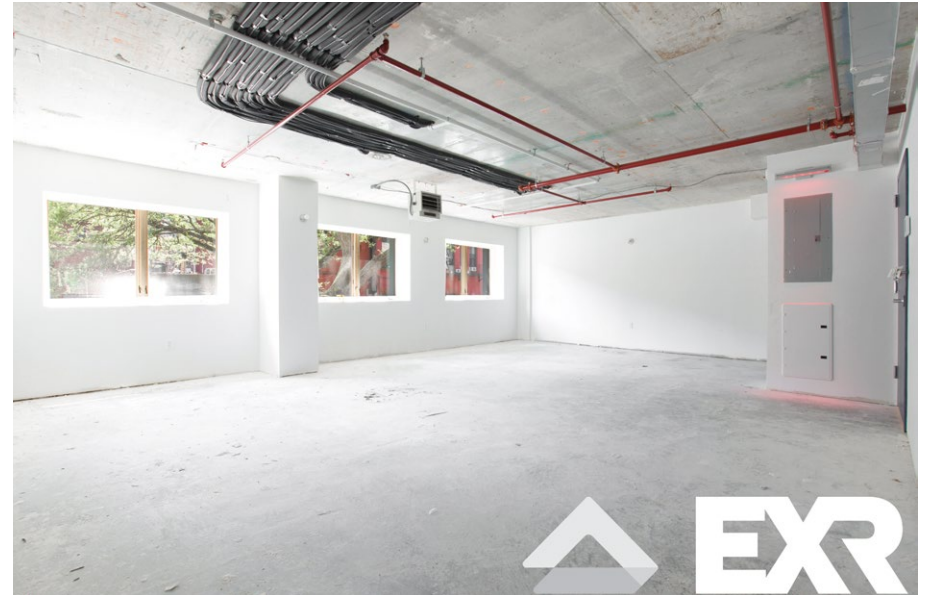
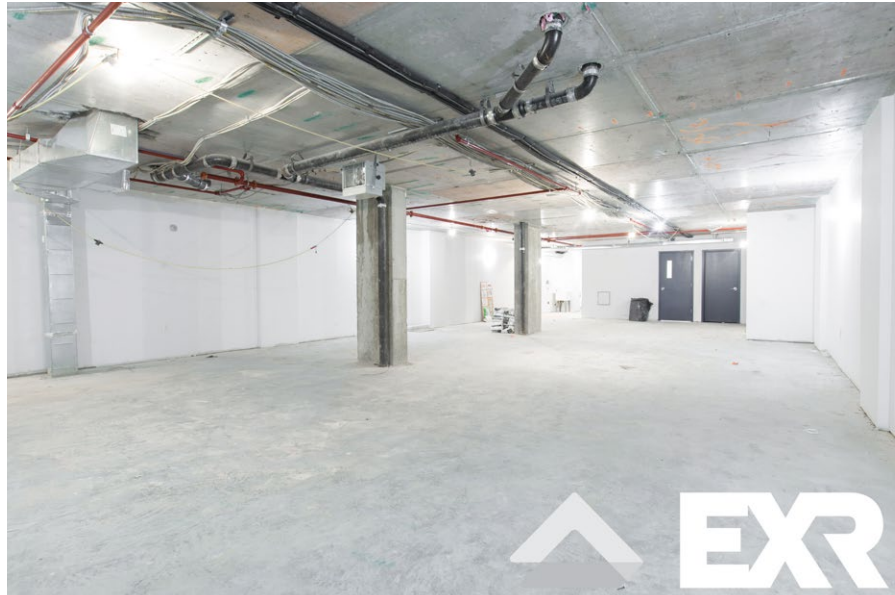


LOWER LEVEL
1,200 SF

BUSHWICK BROOKLYN

11 WEIRFIELD STREET

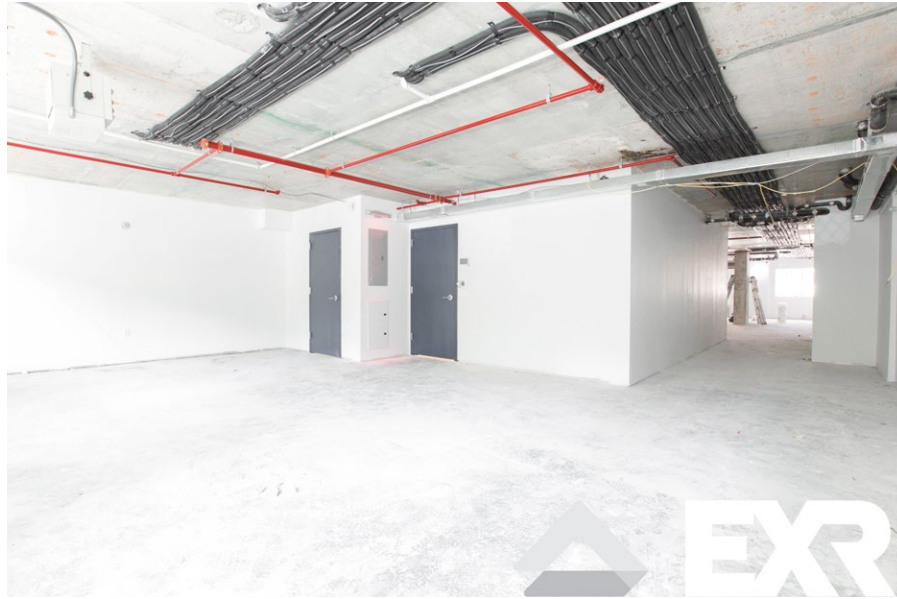
GALLERY



BUSHWICK BROOKLYN

11 WEIRFIELD STREET

GALLERY



BUSHWICK BROOKLYN

11 WEIRFIELD STREET

NEIGHBORHOOD DEMOGRAPHICS



158,122

POPULATION
WITHIN 1-MILE
RADIUS



37 Years

AVERAGE
POPULATION
AGE



1.98%

POPULATION
GROWTH
SINCE 2010



\$55,244

AVERAGE HHI
WITHIN 1-MILE
RADIUS



4,549

TOTAL BUSINESSES
WITHIN 1-MILE
RADIUS



\$1.8 bn

ANNUAL SPENDING
WITHIN 1-MILE
RADIUS

BUSHWICK BROOKLYN

11 WEIRFIELD STREET

NEIGHBORHOOD & TRANSPORTATION

NEIGHBORHOOD TENANTS

- Domino's Pizza
- Popeyes Louisiana Kitchen
- Dunkin'
- Gems Bar & Lounge
- Checkers
- Broadway Medical Center
- Marthitas Kitchen # 2
- New Choy Hing
- House Party Cafe & Lounge
- BK Pizza
- Bravo Gourmet Deli
- Krumb Snackerz
- Alexandra Deli & Grocery
- september
- El Burrito Nacho
- Little Skips East
- Andalucia Grill & Bar Lounge
- Maya Fusion Cafe
- Le Fatima
- Zun Laundromat
- Four Hands Embroidery

TRANSPORTATION

- 2 Min Walk at Halsey Street (0.1 mi)
- 8 Min Walk at Chauncey Street (0.4 mi)
- 9 Min Walk at Gates Avenue (0.4 mi)
- 14 Min Walk at Rockaway Avenue (0.7 mi)
- 17 Min Walk at Ralph Avenue (0.9 mi)



BUSHWICK BROOKLYN

11 WEIRFIELD STREET

CONTACT



JOHN LE VINE
(718) 682-7903
J@EXRNY.COM

