

13650 MICHIGAN AVENUE  
DEARBORN, MICHIGAN

RETAIL FOR LEASE  
5,000 Square Feet Available



**SIGNATURE  
ASSOCIATES**  
KNOW SIGNATURE | KNOW RESULTS

**FORMER BANK**



## PROPERTY FEATURES

- 5,000 available square feet
- Zoned BC, Commercial
- 20+ parking spaces
- Lease Rate: \$13.00/sq.ft. NNN

**Comments:** Former Comerica Bank location. Beautifully appointed property with great visibility on Michigan Avenue. Property is equipped with 3 safes on the first floor and lower level. Second and third floors can be included with the first floor lease. Teller windows, safe deposit boxes and rooms are in place. Must see for jewelers, dentist & doctor's offices, hair salons, FedEx office types, wireless communications, etc. Near Ford Motor Company World Headquarters.



For more information, please contact:

**JACK TOWNSEND**

(248) 948 0115

[jtownsend@signatureassociates.com](mailto:jtownsend@signatureassociates.com)

**JUSTIN GAFFREY**

(248) 799 3143

[jgaffrey@signatureassociates.com](mailto:jgaffrey@signatureassociates.com)

**SIGNATURE ASSOCIATES**

One Towne Square, Suite 1200

Southfield, MI 48076

[www.signatureassociates.com](http://www.signatureassociates.com)



# 13650 Michigan Avenue – Dearborn, Michigan

## Retail For Lease

5,000  
Square Feet  
AVAILABLE

### Interior Photos



For more information, please contact:

**JACK TOWNSEND**

(248) 948 0115

[jtownsend@signatureassociates.com](mailto:jtownsend@signatureassociates.com)

**JUSTIN GAFFREY**

(248) 799 3143

[jgaffrey@signatureassociates.com](mailto:jgaffrey@signatureassociates.com)

**SIGNATURE ASSOCIATES**

One Towne Square, Suite 1200

Southfield, MI 48076

[www.signatureassociates.com](http://www.signatureassociates.com)

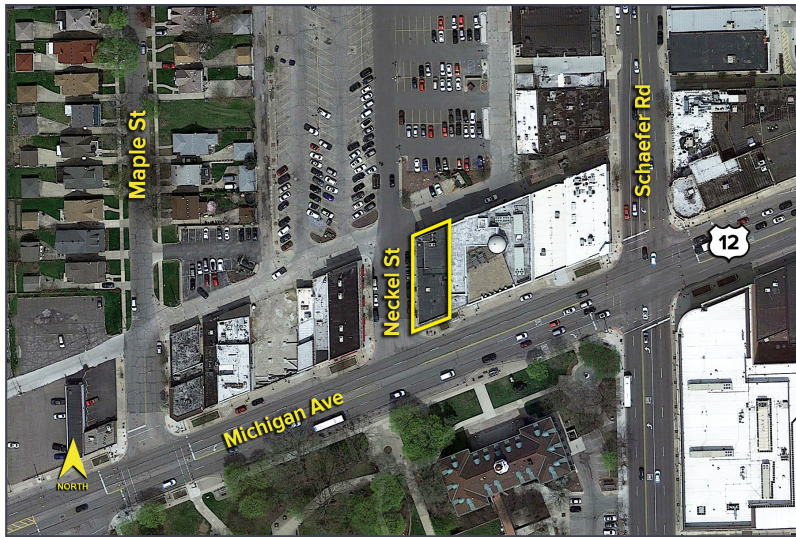
Information is subject to verification and no liability for errors or omissions is assumed. Price is subject to change and listing withdrawal.



# 13650 Michigan Avenue – Dearborn, Michigan

## Retail For Lease

5,000  
Square Feet  
AVAILABLE

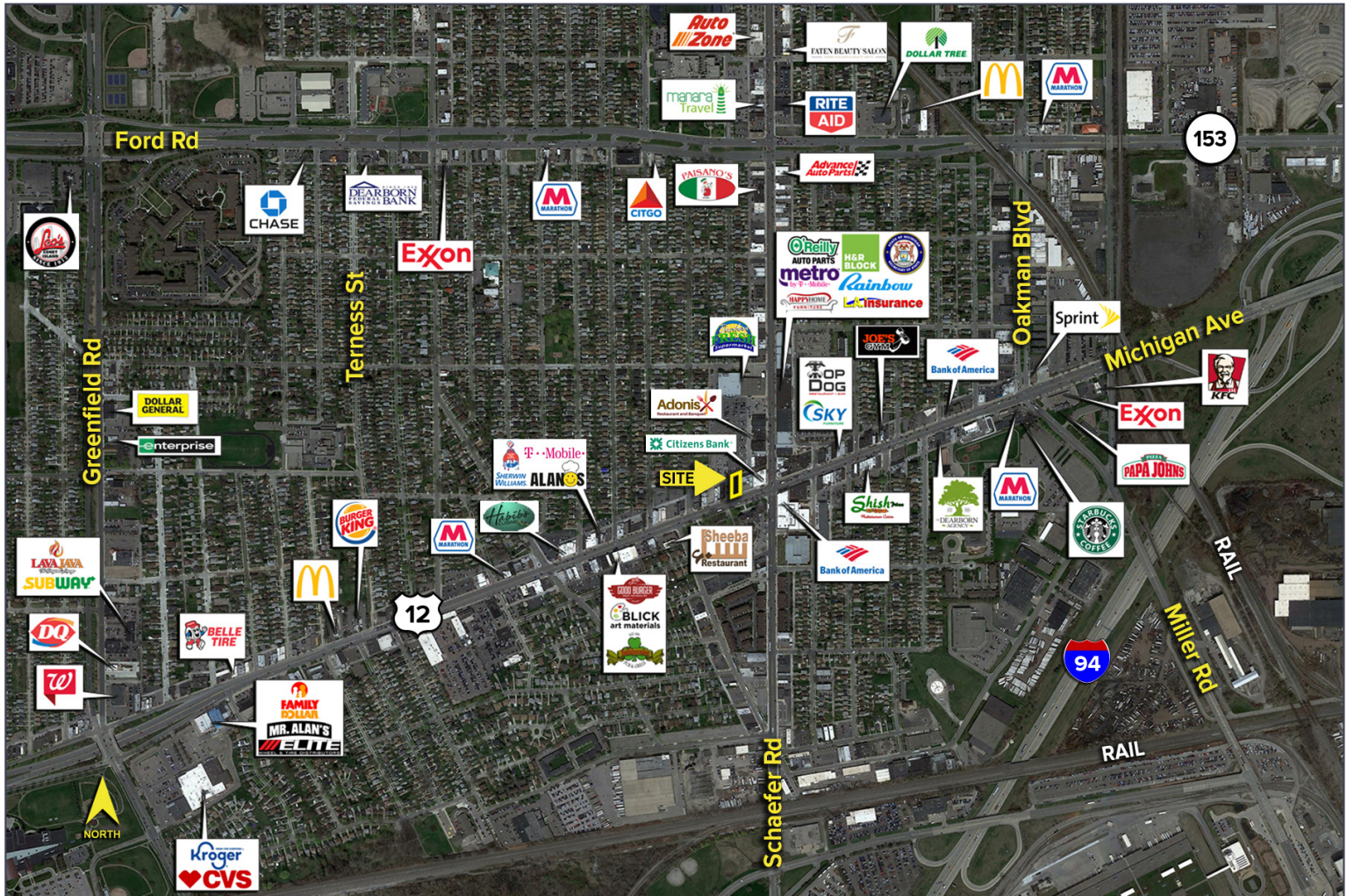


### DEMOGRAPHICS

	POPULATION	MED. HH INCOME
1 MILE	18,052	\$41,849
3 MILE	126,891	\$36,648
5 MILE	331,453	\$39,438

### TRAFFIC COUNTS (TWO-WAY)

22,995	Michigan Ave. E. of Schaefer Rd. 2-Way
28,675	Michigan Ave. W. of Schaefer Rd. 2-Way
16,081	Schaefer Rd. N. of Michigan Ave. 2-Way
19,885	Schaefer Rd. S. of Michigan Ave. 2-Way



For more information, please contact:

**JACK TOWNSEND**

(248) 948 0115

[jtownsend@signatureassociates.com](mailto:jtownsend@signatureassociates.com)

**JUSTIN GAFFREY**

(248) 799 3143

[jgaffrey@signatureassociates.com](mailto:jgaffrey@signatureassociates.com)

**SIGNATURE ASSOCIATES**

One Towne Square, Suite 1200

Southfield, MI 48076

[www.signatureassociates.com](http://www.signatureassociates.com)

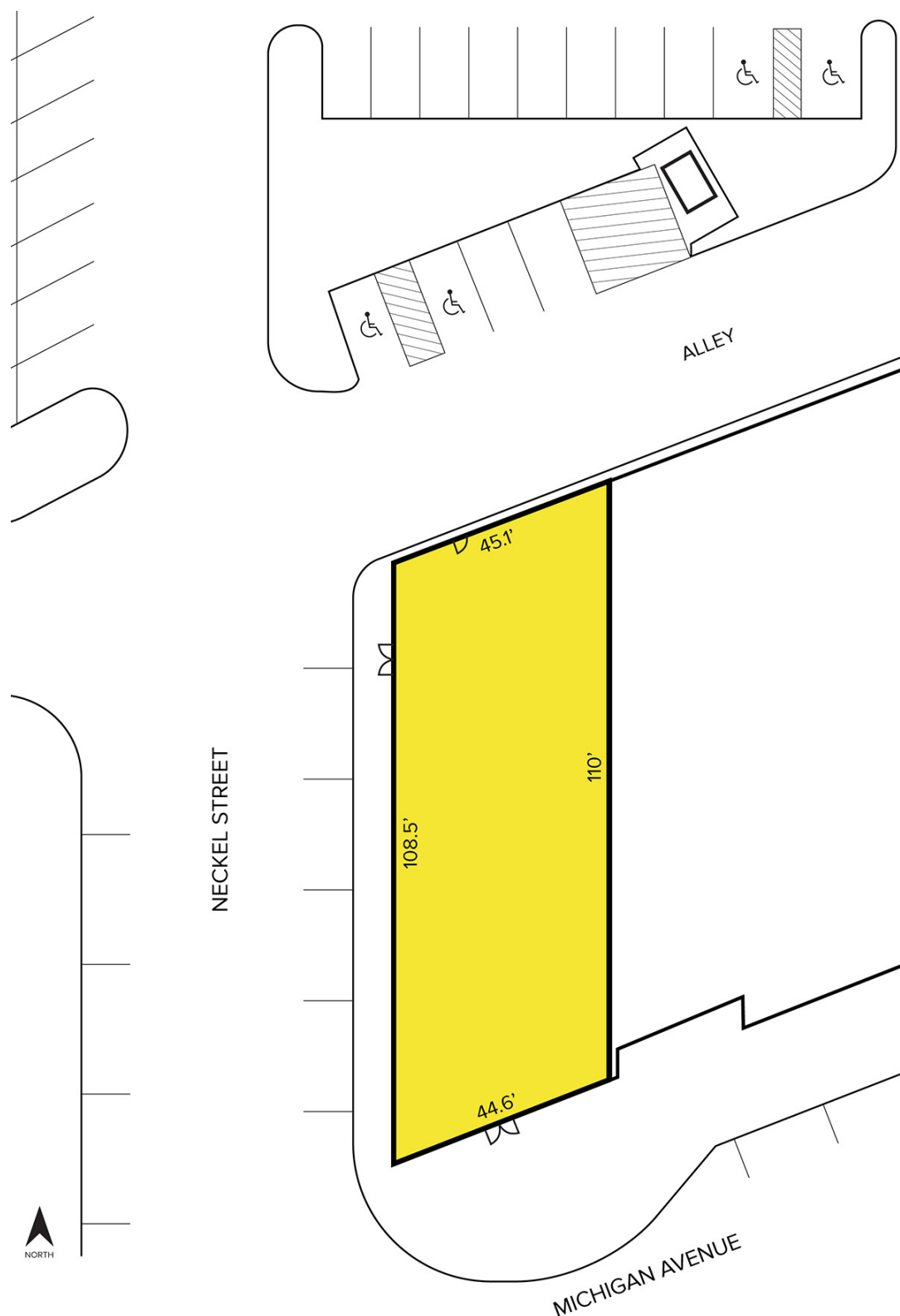


# 13650 Michigan Avenue – Dearborn, Michigan

## Retail For Lease

5,000  
Square Feet  
AVAILABLE

### Site Plan



For more information, please contact:

**JACK TOWNSEND**

(248) 948 0115

[jtownsend@signatureassociates.com](mailto:jtownsend@signatureassociates.com)

**JUSTIN GAFFREY**

(248) 799 3143

[jgaffrey@signatureassociates.com](mailto:jgaffrey@signatureassociates.com)

**SIGNATURE ASSOCIATES**

One Towne Square, Suite 1200

Southfield, MI 48076

[www.signatureassociates.com](http://www.signatureassociates.com)