

# FOR LEASE

## *500± Sq. Ft. Office Space*



***524 Main Street, Suite 207 • Woodland, CA***

Private Offices on Second Floor  
Located in Historic Downtown Woodland  
Walking distance to City Hall, County Administration Building  
Close to restaurants and shopping.  
Front and Back Entry for Privacy  
No Elevator

Rent Includes: Water/Sewer, Garbage and PG&E

**Lease Rate: \$800.00/Month**

**SALLING PROPERTIES INC.**

DRE No. 02201437

REAL ESTATE SALES, LEASING & PROPERTY MANAGEMENT

20 N. East Street, Suite 101, Woodland, CA 95776

Phone: (530) 666-5485 Website: [www.Sheffield-RealEstate.com](http://www.Sheffield-RealEstate.com)

E-Mail: [sallingproperties@kathysallingrealtor.com](mailto:sallingproperties@kathysallingrealtor.com)

The information contained herein has been obtained from sources we deem reliable. We cannot, however, assume responsibility for its accuracy.

Listing Agent: **Bryan Sheffield, Agent**

CalBRE: **02065645**

Phone: **(530) 219-0281**

E-Mail: **[bsheffield100@gmail.com](mailto:bsheffield100@gmail.com)**



# *500± Sq. Ft. Office Space*



## **SALLING PROPERTIES INC.**

DRE No. 02201437

**REAL ESTATE SALES, LEASING & PROPERTY MANAGEMENT**

20 N. East Street, Suite 101, Woodland, CA 95776

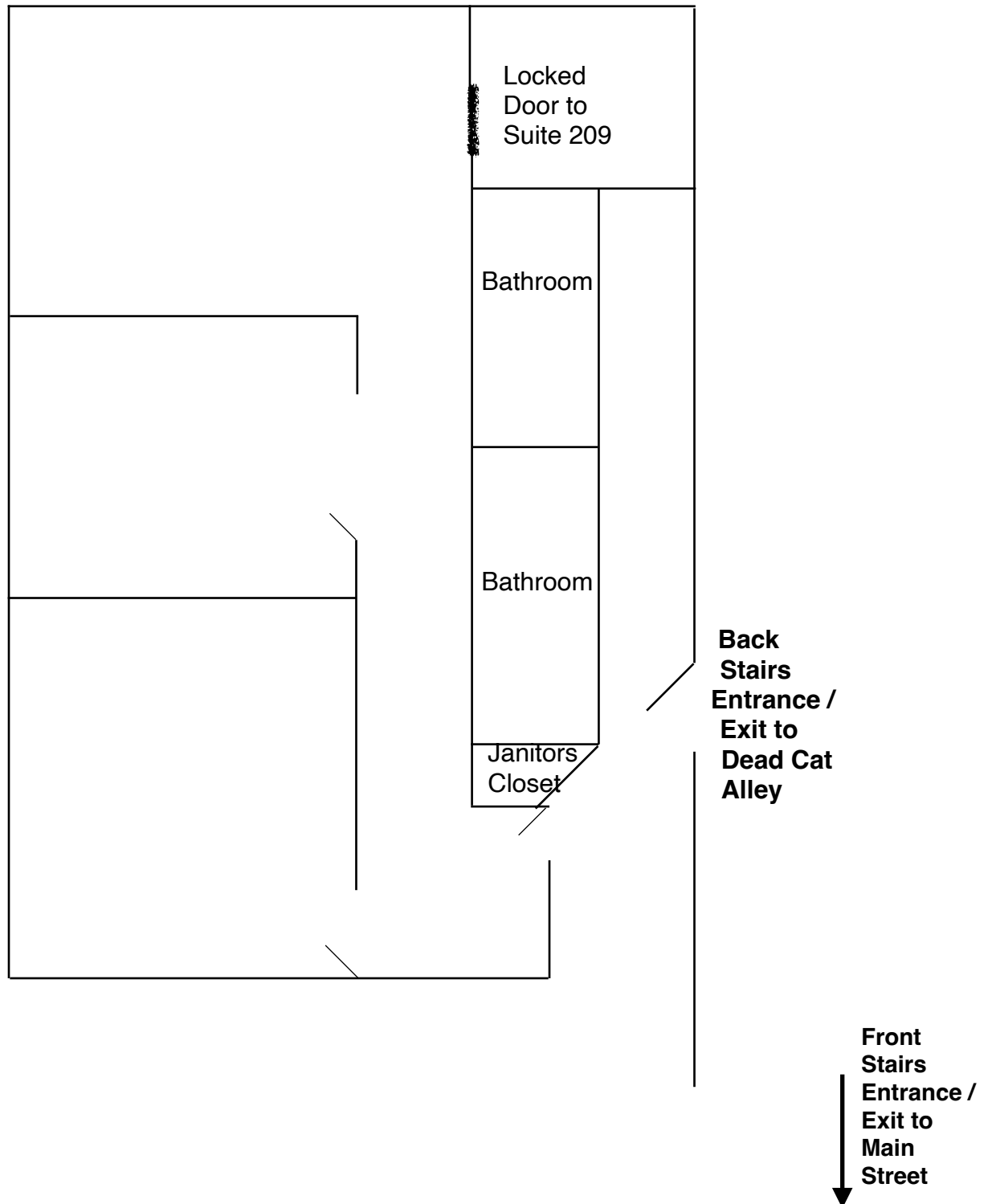
Phone: (530) 666-5485 Website: [www.Sheffield-RealEstate.com](http://www.Sheffield-RealEstate.com)

E-Mail: [sallingproperties@kathysallingrealtor.com](mailto:sallingproperties@kathysallingrealtor.com)

The information contained herein has been obtained from sources we deem reliable. We cannot, however, assume responsibility for its accuracy.

Listing Agent: **Bryan Sheffield, Agent**  
CalBRE: **02065645**  
Phone: **(530) 219-0281**  
E-Mail: **bsheffield100@gmail.com**

***500± Sq. Ft. Office Space***  
***524 Main Street, Suite 207 • Woodland, CA***



\*Drawing Not To Scale

**SALLING PROPERTIES INC.**

DRE No. 02201437

REAL ESTATE SALES, LEASING & PROPERTY MANAGEMENT

20 N. East Street, Suite 101, Woodland, CA 95776

Phone: (530) 666-5485 Website: [www.Sheffield-RealEstate.com](http://www.Sheffield-RealEstate.com)

E-Mail: [sallingproperties@kathysallingrealtor.com](mailto:sallingproperties@kathysallingrealtor.com)

The information contained herein has been obtained from sources we deem reliable. We cannot, however, assume responsibility for its accuracy.

Listing Agent: **Bryan Sheffield, Agent**  
CalBRE: **02065645**  
Phone: **(530) 219-0281**  
E-Mail: **[bsheffield100@gmail.com](mailto:bsheffield100@gmail.com)**