



404 Wingrove St, Nashville, TN 37203

6,915 SF | \$3,495,000

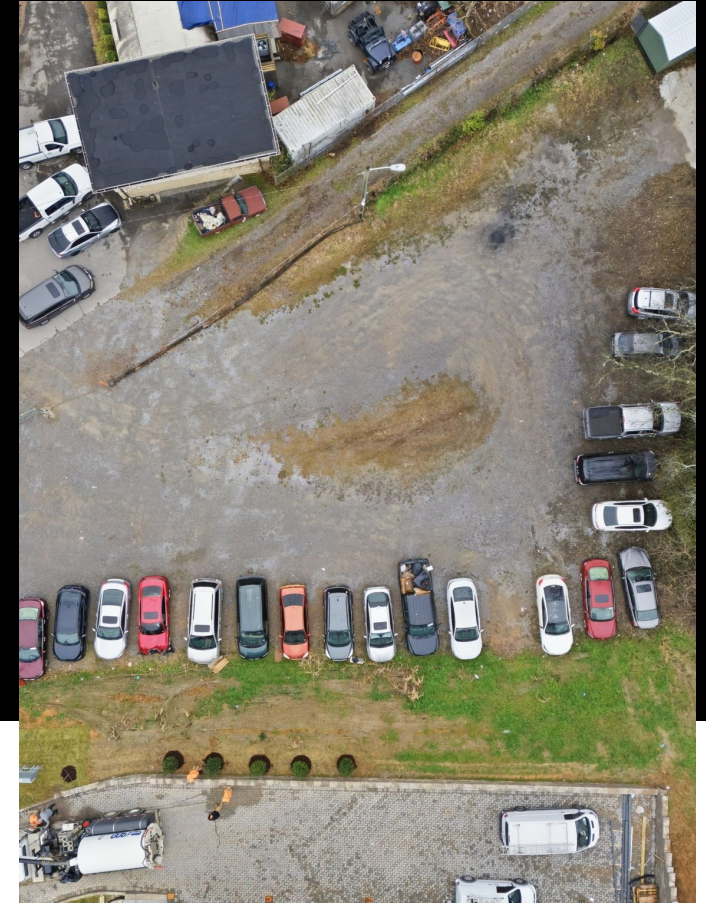


Property Description

Prime industrial property located just off Nolensville Road, minutes from Downtown Nashville and the Nashville MLS soccer club stadium.

The offering consists of three contiguous parcels sold together, featuring a 6,915 SF clear-span industrial building with 1 dock-high door and 1 drive-in ramp, plus additional land for parking, outdoor storage, or future development.

With truck access via 403 Moore Avenue and close proximity to I-440, I-24, and I-65, the property offers excellent connectivity and is well positioned for an owner-user or investor in a rapidly redeveloping area.



Key Details

- Asking Price: \$3,495,000
- Building: 6,915 SF
- Land Area: 0.60 AC
- Three Contiguous Parcels Sold Together
- Rear-Load: 1 Dock Door and 1 Drive-In Ramp
- Site: Fenced with Additional Parking / Yard
- Location: Prime Location off Nolensville Road
- Proximity: Minutes to Downtown Nashville
- Zoning: Commercial Service





Wes Wray

Commercial RE Advisor
M: 270.320.7522
O: 615.475.5616
wes@realequitycre.com

Jamie Brandenburg, SIOR

Commercial RE Advisor
M: 615.487.2100
O: 615.475.5616
jamie@realequitycre.com

Tanner Smith

Commercial RE Advisor
M: 731.693.6576
O: 615.475.5616
tanner@realequitycre.com

THE _____
REAL EQUITY
_____ GROUP



Compass RE is a licensed real estate broker. All material is intended for informational purposes only and is compiled from sources deemed reliable but is subject to errors, omissions, changes in price, condition, sale, or withdrawal without notice. No statement is made as to the accuracy of any description or measurements (including square footage). This is not intended to solicit property already listed. No financial or legal advice provided. Equal Housing Opportunity. Photos may be virtually staged or digitally enhanced and may not reflect actual property conditions.