



5600 PIONEER CREEK DRIVE, MAPLE PLAIN, MN 55359

**AFFORDABLE OFFICE & WAREHOUSE SUITES JUST MINUTES WEST
OF DOWNTOWN WAYZATA & LONG LAKE**



FOR LEASE

OFFICE RATES - \$12 PSF NNN

WAREHOUSE RATES \$5.50 PSF NNN

**\$5.53 PSF CAM / TAXES (INCLUDES ALL UTILITIES EXCEPT
INTERNET)**

EXCLUSIVELY LISTED BY:



AARON GOLDSTEIN | CEO + BROKER
612-382-4774 | AARON@THEGOLD.GROUP



HILA KADOSH | BROKERAGE ASSOCIATE
612-385-1699 | HILA@THEGOLD.GROUP

GOLD GROUP REALTY

FLOOR PLANS

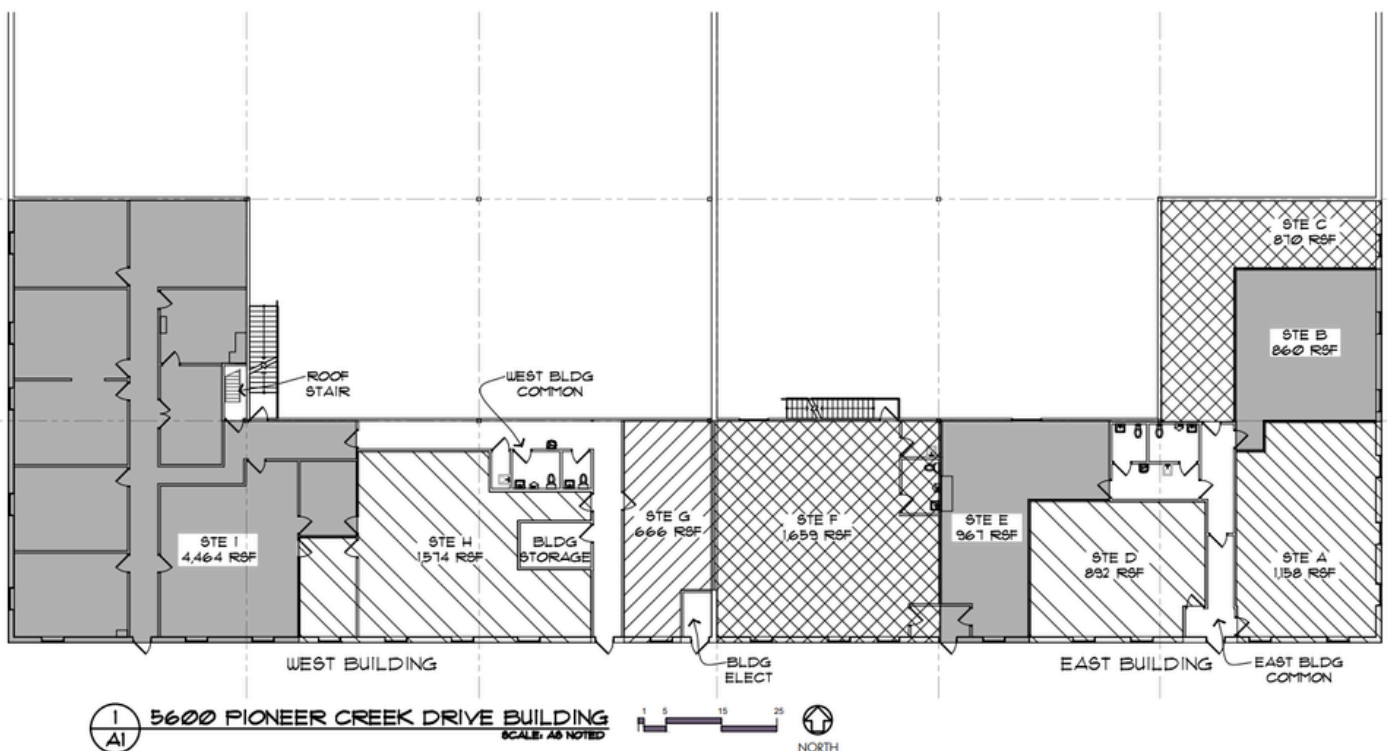
GROUND LEVEL WAREHOUSE SUITES

SPECS – Ground Level Warehouse

Total Size	53,771 RSF
Total Office	13,180 RSF
Total Warehouse	40,591 RSF
Warehouse Available	19,653 RSF



MAIN FLOOR OFFICE SUITES



GOLD GROUP REALTY
INTERIOR PHOTOS



GOLD GROUP REALTY
LOCATION OVERVIEW

