

739 E. WALNUT STREET, SUITE 200
PASADENA, CA 91101

OFFICE SPACE FOR LEASE



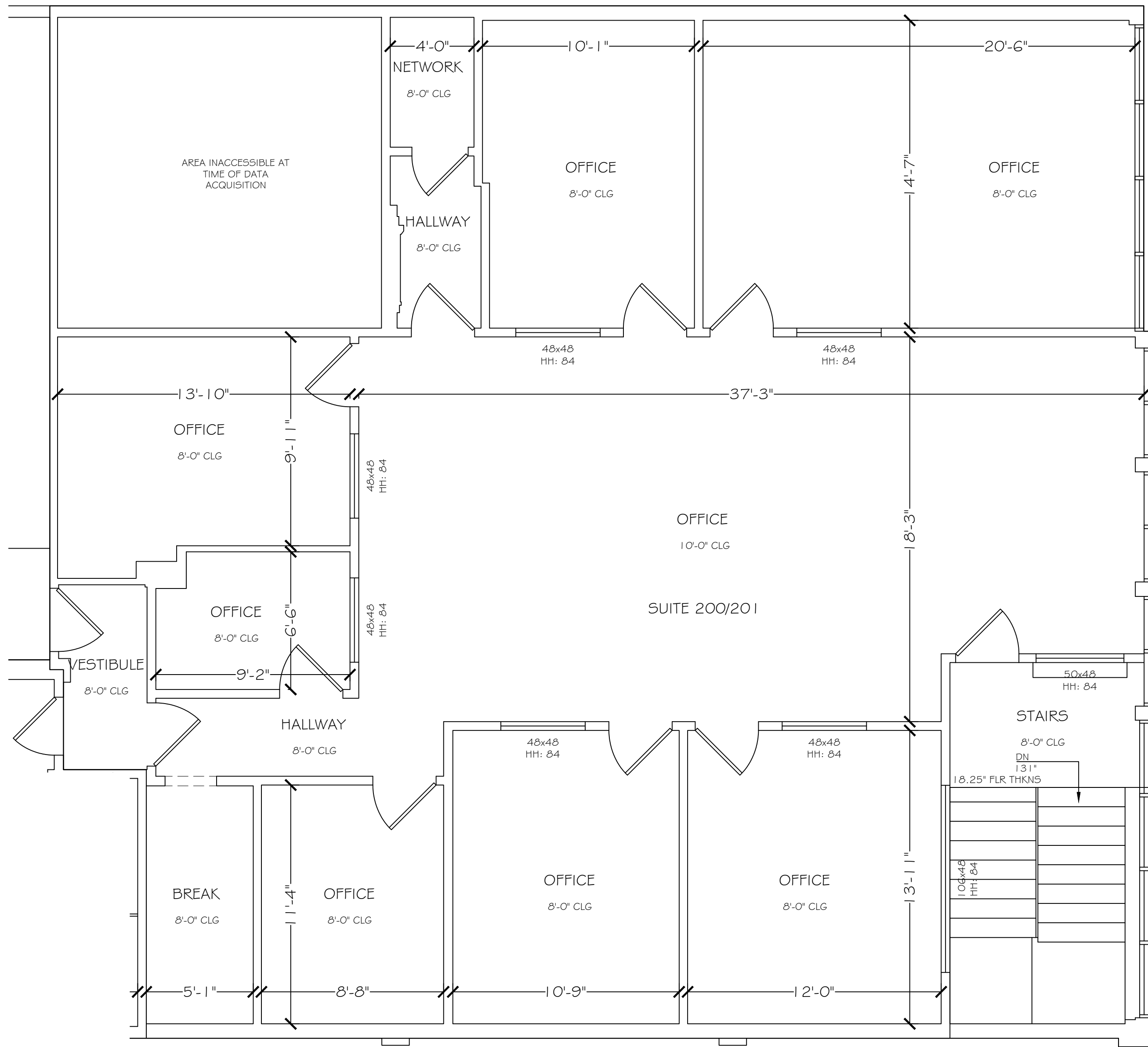
- **\$1.95/SF MODIFIED GROSS**
- **2,728 RENTABLE SQUARE FEET**
- **TERM: 3 - 5 YEARS**
- **FULL BUILD-OUT**
- **7 RESERVED PARKING SPACES**
- **SECURE, GATED PARKING**

Creative Office Space in excellent condition. Features 4 private offices, conference room, kitchen, and copy/mail room all surrounding a large open space. Vinyl flooring throughout, two thermostats, two entrances (secure, keypad controlled vestibule entrance as well as an exclusive entrance from Walnut St). Common area restrooms shared with only one other tenant. No elevator access.

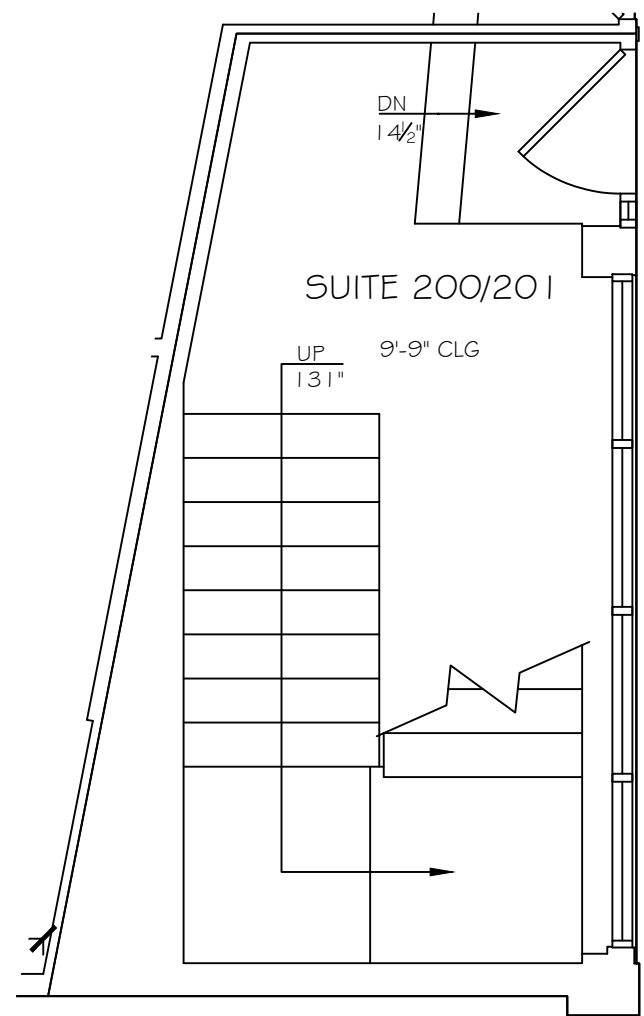


Shant Dimijian
DRE# 01988179
(626)264-4444
shant@bhhsgolden.com

**BERKSHIRE
HATHAWAY**
HOMESERVICES
GOLDEN PROPERTIES
COMMERCIAL DIVISION



SECOND FLOOR



FIRST FLOOR

