



For Sale

27400 John R Road | Madison Heights, MI
Industrial Building | Repair Shop

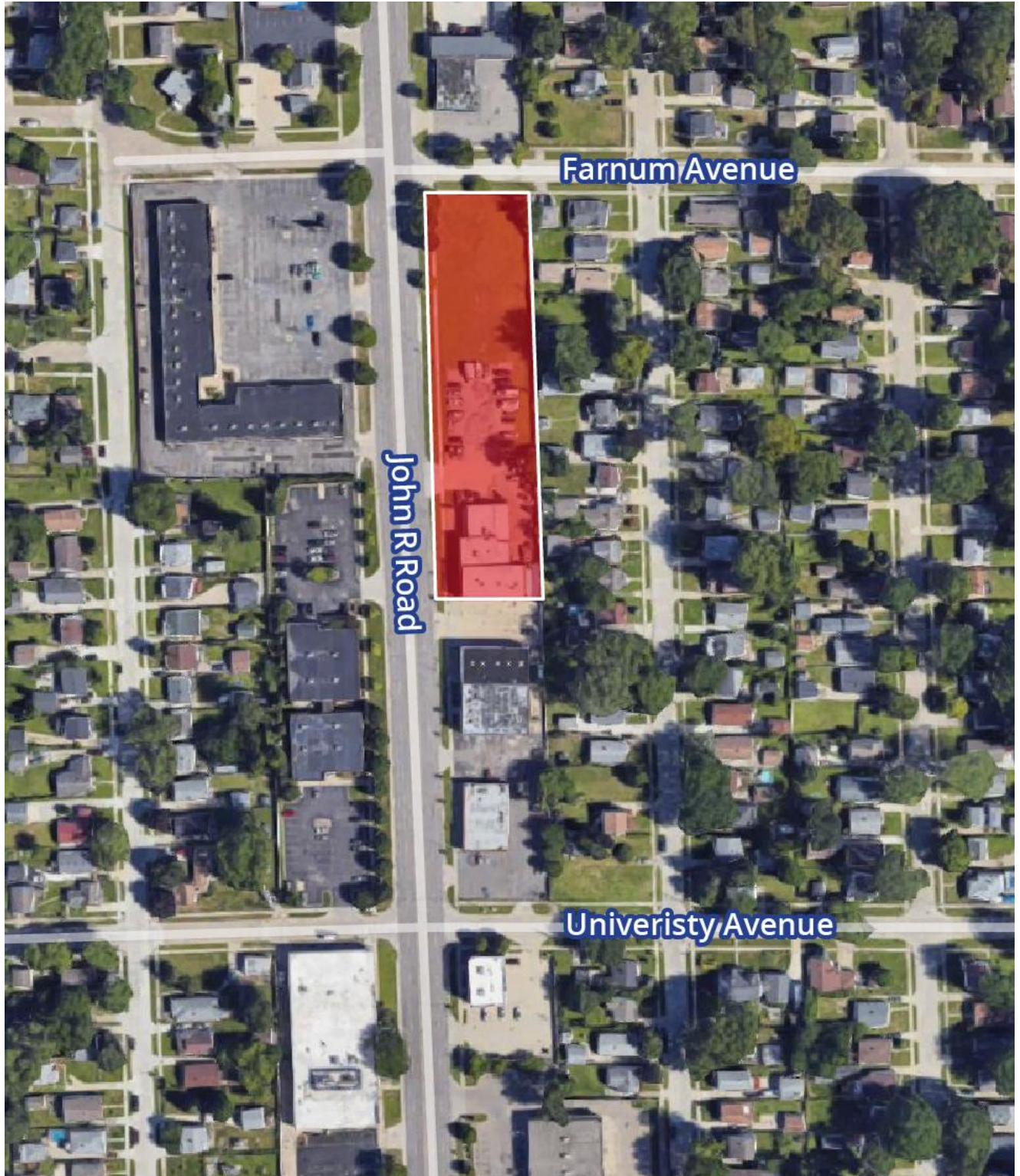
- 6,500 SF Available
- 482' of Frontage on Busy John R Road
- Clear Span Warehouse
- 20' Clear
- (4) Grade Level Doors
- Site on 1.21 Acres

Paul Gyarmati
 Direct | 248 226 1618
paul.gyarmati@colliers.com

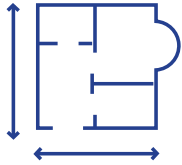
Sean E. Jamian
 Direct | 248 226 1637
sean.jamian@colliers.com

Joe Royer
 Direct | 248 226 1628
joe.royer@colliers.com

Aerial



Property Highlights



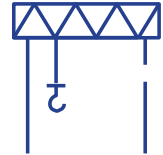
6,500
Total SF



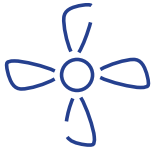
16'-20'
Clear Height



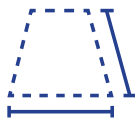
2,000
SF Office



3
Hoists



100%
HVAC Office
+ Front Shop



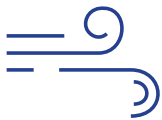
1.21
Acre Site



Clear
Span



30+
Parking Spaces
(Expandable)



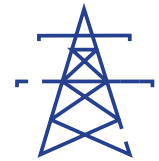
Air
Compressor



Radiant Heat
In Shop

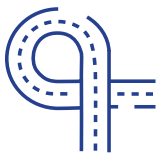


New
Roof



3-Phase
Power

General Information



Easy Access
To I-75 & I-696



Surplus
Land

Property Description



Property Summary

Construction Type	Brick & Steel
Year Built	1952
Floor	Concrete
Lighting	LED & Florescent
HVAC (No Waste)	Full HVAC in Office & Front Shop. Radiant Heat in Rear Shop
Sprinkler	Yes
Clear Height	20'
Roof	Flat Rubber
Power/Buss	3-Phase
Cranes	None
Rail	None
# Docks/Truckwells	None
# Grade Level Doors	4
Door Dimensions	(1) 12'X10' (1) 11'X14' (1) 10'X10' (1) 11'X12'
Air Compressor	Yes, Throughout Shop

Property Summary

Building SF	6,500
Available SF	6,500
Office SF	+/- 2,000
Warehouse SF	4,500
County	Oakland
Cross Street	11 Mile Road & 12 Mile Road

Site

Land Size (Acres)	1.21
Parcel Number	25-12-102-045
Zoning	B-3

General

Utilities	All On Site
# Parking Spaces	30
Annual Taxes	2.18 PSF

Contacts

Sean E. Jamian
Paul Gyarmati

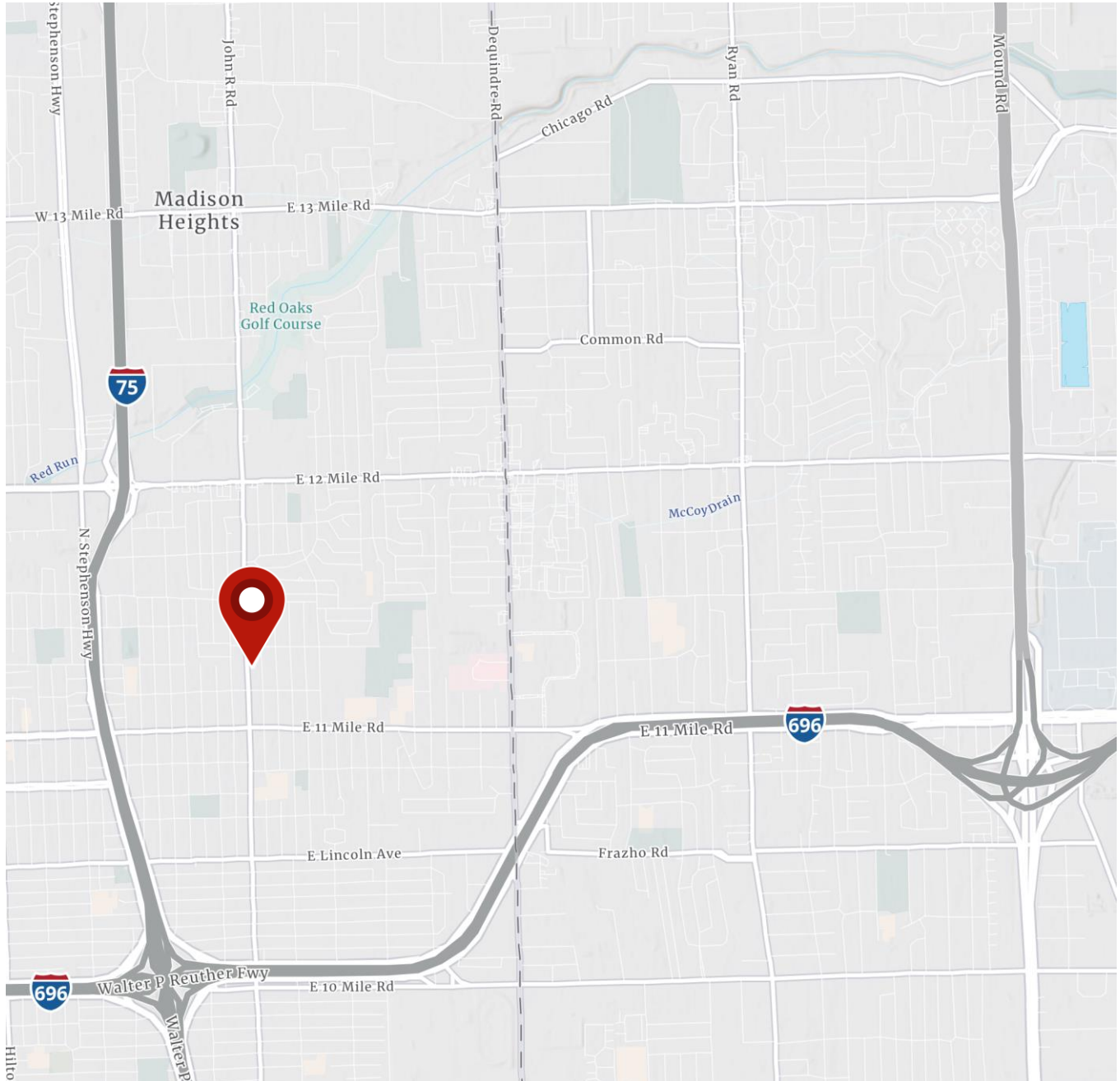
Features

(3) Hoists Available with Purchase. Mezzanine Above Rear Shop for Storage.

Merchant Map



Location Map



Paul Gyarmati
Direct | 248 226 1618
paul.gyarmati@colliers.com

Sean E. Jamian
Direct | 248 226 1637
sean.jamian@colliers.com

Joe Royer
Direct | 248 226 1628
joe.royer@colliers.com