

RETAIL FOR SALE



## MIXED USE RETAIL/OFFICE - UPSIDE OPPORTUNITY

210-212 WEST MAIN STREET, SANTA MARIA, CA 93458



### KW COMMERCIAL

111 N First St  
Burbank, CA 91502



Each Office Independently Owned and Operated

### PRESENTED BY:

#### DAVID MOSKOWITZ

Regional Ambassador/CA Central Southern  
C: (323) 493-3659  
dmoskowitzkw@gmail.com  
DRE: 01372552, CA

#### SCOTT TAYLOR

Sr Commercial Advisor, Broker Associate  
O: 805-540-4825  
scotttaylorteam@gmail.com  
DRE #01864709

We obtained the information above from sources we believe to be reliable. However, we have not verified its accuracy and make no guarantee, warranty or representation about it. It is submitted subject to the possibility of errors, omissions, change of price, rental or other conditions, prior sale, lease or financing, or withdrawal without notice. We include projections, opinions, assumptions or estimates for example only, and they may not represent current or future performance of the property. You and your tax and legal advisors should conduct your own investigation of the property and transaction.

## DISCLAIMER

210-212 WEST MAIN STREET



All materials and information received or derived from KW Commercial its directors, officers, agents, advisors, affiliates and/or any third party sources are provided without representation or warranty as to completeness, veracity, or accuracy, condition of the property, compliance or lack of compliance with applicable governmental requirements, developability or suitability, financial performance of the property, projected financial performance of the property for any party's intended use or any and all other matters.

Neither KW Commercial its directors, officers, agents, advisors, or affiliates makes any representation or warranty, express or implied, as to accuracy or completeness of the materials or information provided, derived, or received. Materials and information from any source, whether written or verbal, that may be furnished for review are not a substitute for a party's active conduct of its own due diligence to determine these and other matters of significance to such party. KW Commercial will not investigate or verify any such matters or conduct due diligence for a party unless otherwise agreed in writing.

EACH PARTY SHALL CONDUCT ITS OWN INDEPENDENT INVESTIGATION AND DUE DILIGENCE.

Any party contemplating or under contract or in escrow for a transaction is urged to verify all information and to conduct their own inspections and investigations including through appropriate third-party independent professionals selected by such party. All financial data should be verified by the party including by obtaining and reading applicable documents and reports and consulting appropriate independent professionals. KW Commercial makes no warranties and/or representations regarding the veracity, completeness, or relevance of any financial data or assumptions. KW Commercial does not serve as a financial advisor to any party regarding any proposed transaction.

All data and assumptions regarding financial performance, including that used for financial modeling purposes, may differ from actual data or performance. Any estimates of market rents and/or projected rents that may be provided to a party do not necessarily mean that rents can be established at or increased to that level. Parties must evaluate any applicable contractual and governmental limitations as well as market conditions, vacancy factors and other issues in order to determine rents from or for the property. Legal questions should be discussed by the party with an attorney. Tax questions should be discussed by the party with a certified public accountant or tax attorney. Title questions should be discussed by the party with a title officer or attorney. Questions regarding the condition of the property and whether the property complies with applicable governmental requirements should be discussed by the party with appropriate engineers, architects, contractors, other consultants, and governmental agencies. All properties and services are marketed by KW Commercial in compliance with all applicable fair housing and equal opportunity laws.

### KW COMMERCIAL

111 N First St  
Burbank, CA 91502



Each Office Independently Owned and Operated

### PRESENTED BY:

#### DAVID MOSKOWITZ

Regional Ambassador/CA Central Southern  
C: (323) 493-3659  
dmoskowitzkw@gmail.com  
DRE: 01372552, CA

#### SCOTT TAYLOR

Sr Commercial Advisor, Broker Associate  
O: 805-540-4825  
scotttaylorteam@gmail.com  
DRE #01864709

The calculations and data presented are deemed to be accurate, but not guaranteed. They are intended for the purpose of illustrative projections and analysis. The information provided is not intended to replace or serve as substitute for any legal, accounting, investment, real estate, tax or other professional advice, consultation or service. The user of this software should consult with a professional in the respective legal, accounting, tax or other professional area before making any decisions.



210-212 WEST MAIN STREET

# Property Information

1

EXECUTIVE SUMMARY  
PROPERTY PHOTOS  
FLOORPLAN-DOWNSTAIRS  
FLOORPLAN-UPSTAIRS

## EXECUTIVE SUMMARY

### 210-212 WEST MAIN STREET



Price:	\$1,349,000
Building SF:	10,387
Lot Size:	9,360 SF
Rental SF:	8,860
Occupancy:	100%
NOI:	\$62,197
CAP Rate:	4.6%
Available SF:	100% Occupied
APN:	123-043-015
Year Built:	1914
Parking:	Street and Rear Lot
Zoning:	SP Gateway, Commercial

#### Property Overview

Two-story mixed use (retail and office building) with abundant upside potential. The property is conveniently located near the high traffic intersection of Broadway and Main St. in downtown Santa Maria. There is curbside parking in front on Main Street and a large shared parking lot behind the building with back door access.

Tremendous growth potential as the area gentrifies and over the next several years with extensive commercial and residential revitalization projects, with over 330 projected new apartments in the immediate area -104 apartments are currently under construction within one block of the property.

The property is currently 100% leased with long-term, tenants all on month-to-month tenancy, offering maximum flexibility to a savvy investor. Financial data available upon request.

Call Listing agents for more details or to arrange a tour.

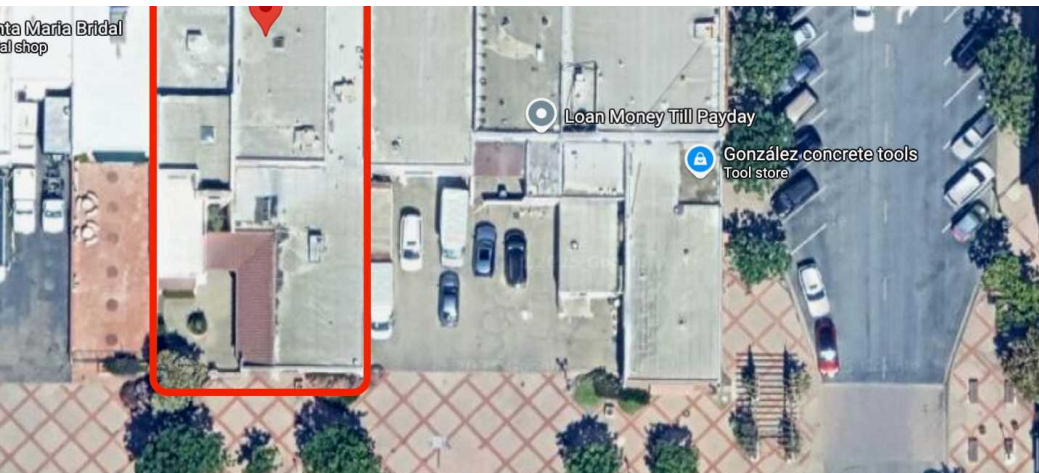
#### Property Highlights

- Centrally located on Main Street, one block from Broadway
- Two-story - Retail downstairs, 10 offices upstairs
- Tremendous upside potential
- Over 330 projected new apartments nearby
- 65' Main Street retail frontage with curbside parking in front, lot in back
- Front and rear access
- 100% Leased, all on month-to-month
- Frame stucco walls with block masonry dividing walls
- Potential uses: Commercial, Retail, Restaurant, Theater, etc.
- Close to the 101 freeway



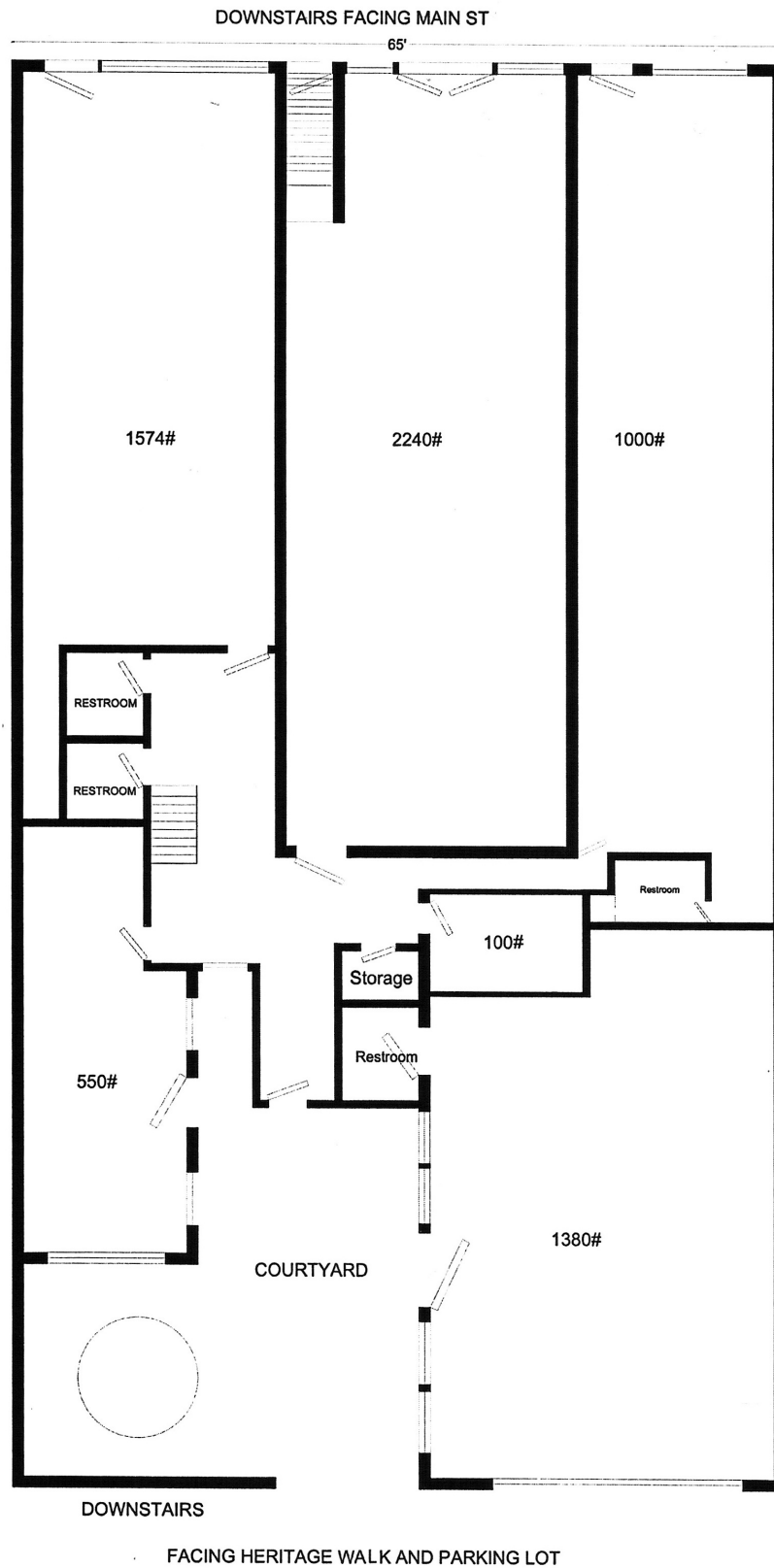
## PROPERTY PHOTOS

210-212 WEST MAIN STREET



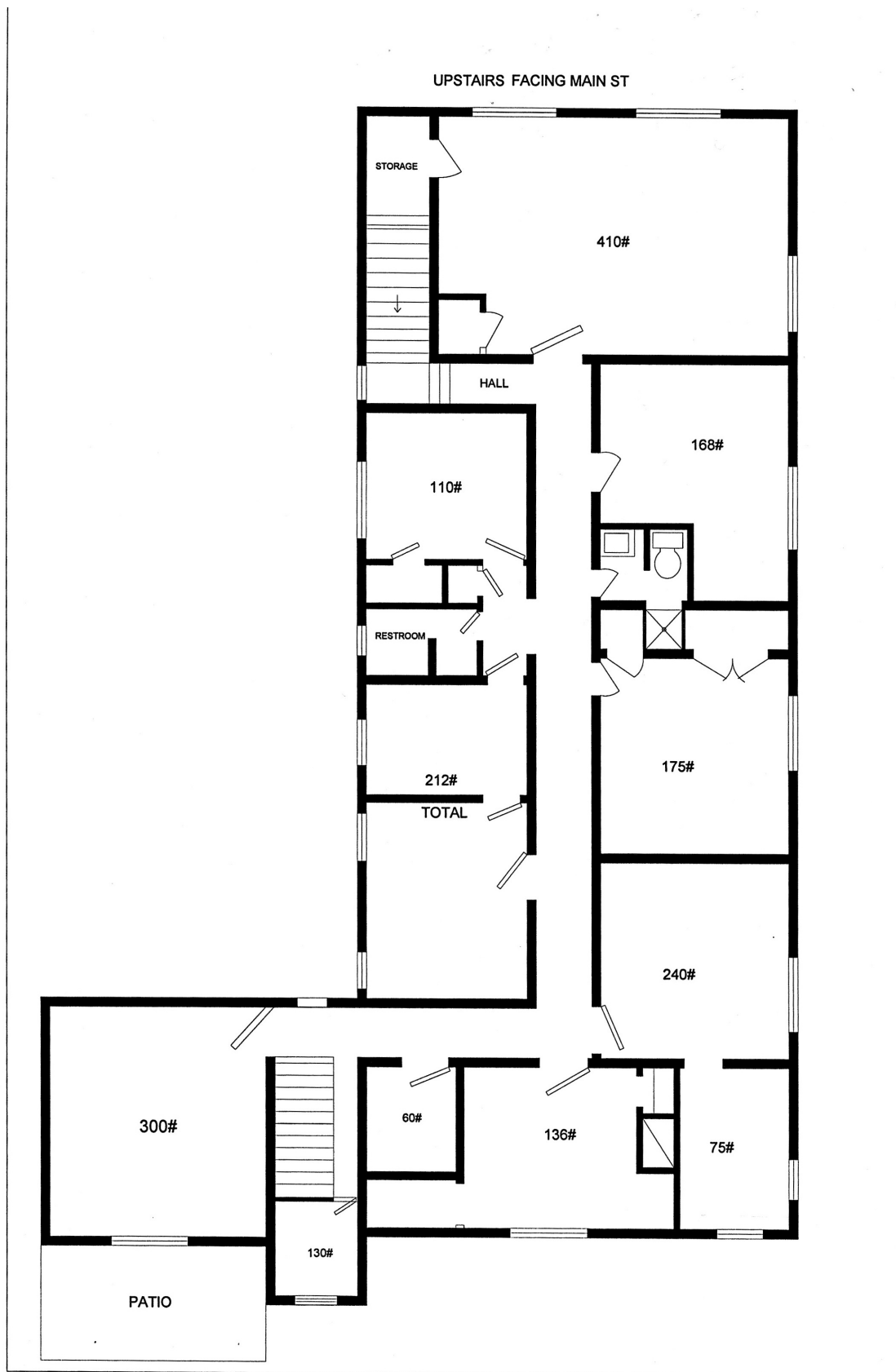
# FLOORPLAN-DOWNSTAIRS

210-212 WEST MAIN STREET



# FLOORPLAN-UPSTAIRS

210-212 WEST MAIN STREET





210-212 WEST MAIN STREET

# Location Information

# 2

REGIONAL MAP

LOCATION MAPS

AERIAL MAP

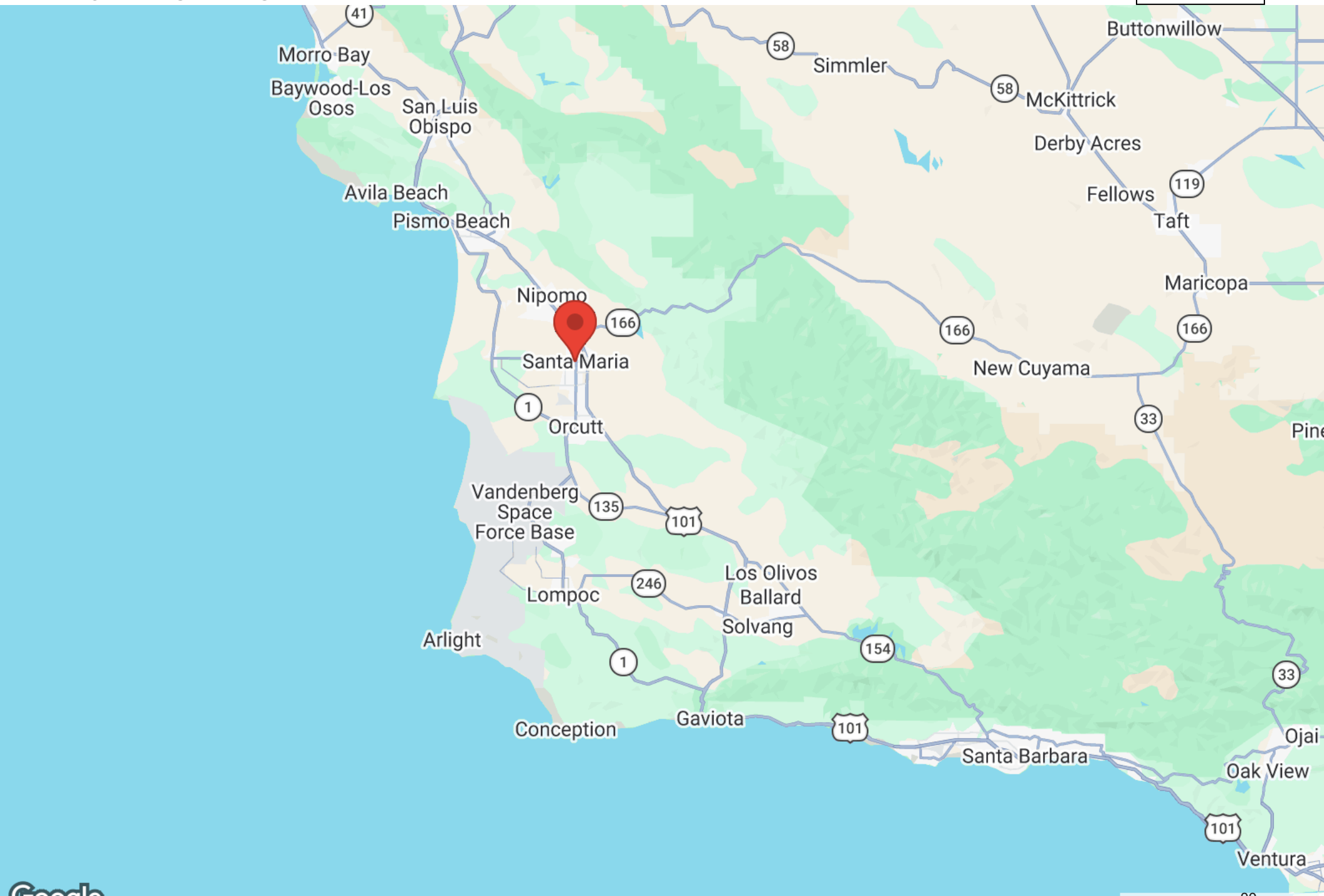
SANTA BARBARA COUNTY

SANTA MARIA

DEMOGRAPHICS

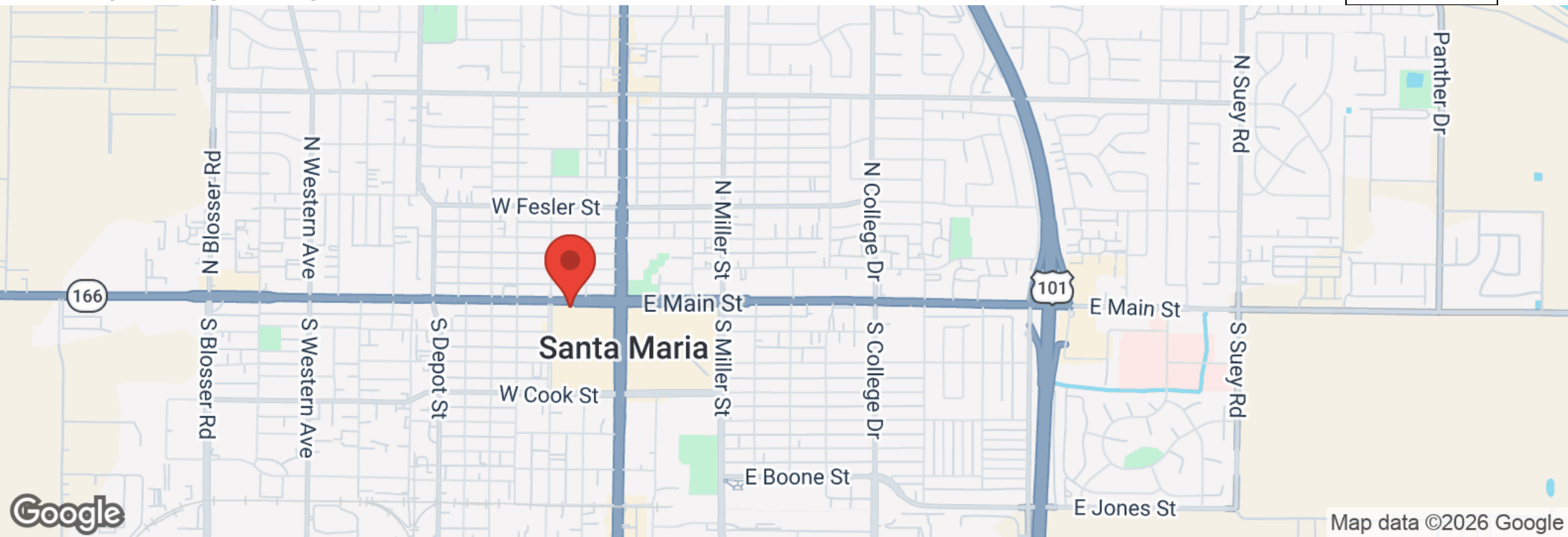
## REGIONAL MAP

210-212 WEST MAIN STREET



## LOCATION MAPS

210-212 WEST MAIN STREET



AERIAL MAP

210-212 WEST MAIN STREET





Encompassing approximately 2,735 square miles, Santa Barbara County stretches from the Pacific Ocean to the rugged Santa Ynez and San Rafael Mountains. Coastal areas benefit from cooling ocean breezes, maintaining moderate temperatures year-round, while inland valleys like Santa Ynez and Santa Maria experience greater temperature swings, with hotter summers and cooler winters.

Santa Barbara County's economy is diverse, driven by tourism, agriculture, education, and technology. Tourism thrives on the region's scenic beauty, historic sites like Mission Santa Barbara, and events such as the Santa Barbara International Film Festival, contributing millions annually.

Agriculture, particularly wine production, is a cornerstone, with over 280 wineries and 21,000 acres of vineyards, alongside strawberry and avocado farming. The University of California, Santa Barbara, fuels innovation, supporting a growing tech sector with companies in aerospace, biotech, and software. Vandenberg Space Force Base in North County bolsters defense-related industries and frequently launches Space-X rockets.



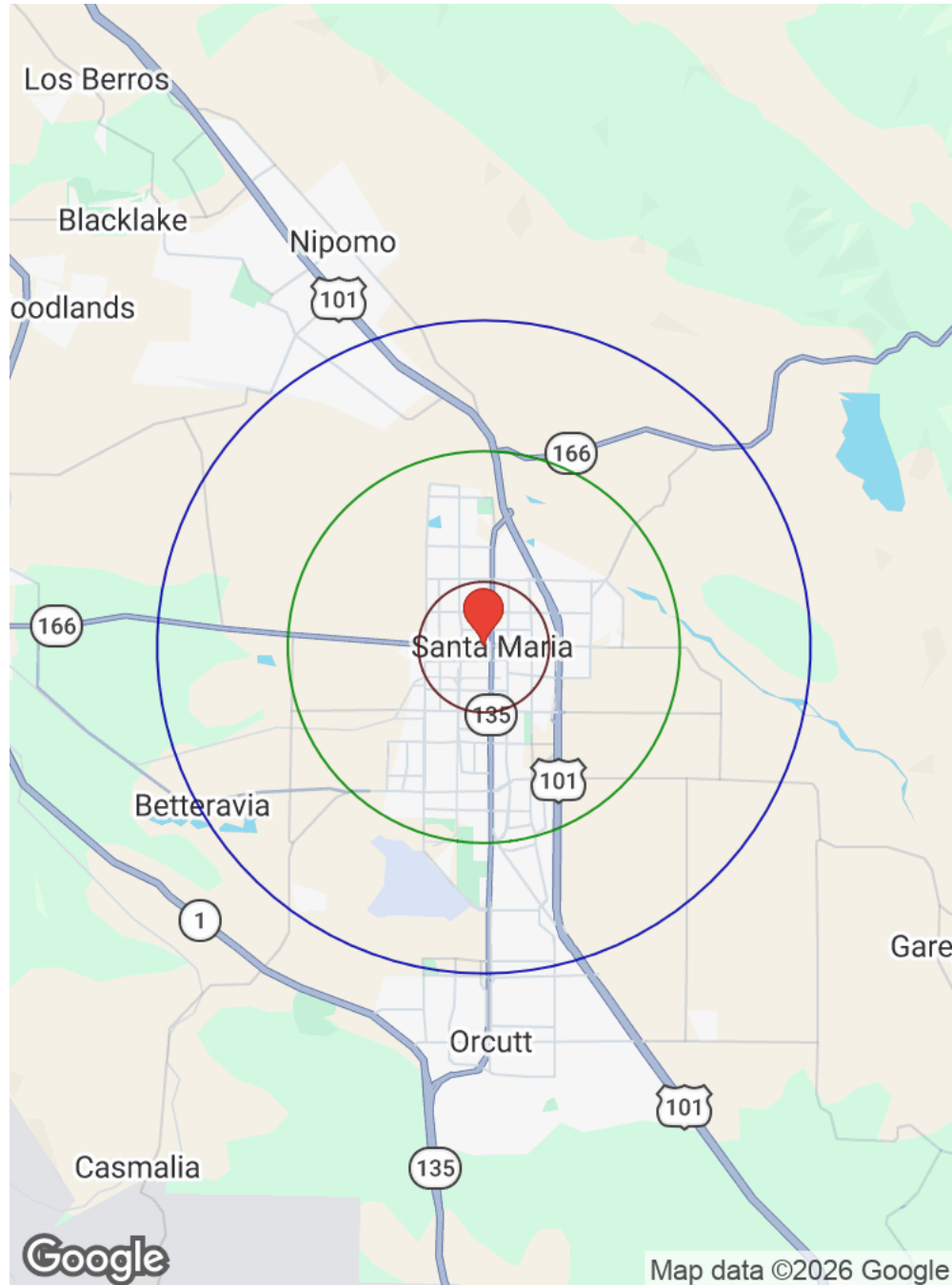
**Santa Maria:** Santa Maria boasts a diverse economy rooted in agriculture, with its rich soil supporting a \$1.5 billion industry that includes strawberries, wine grapes, and vegetables like broccoli and lettuce, alongside a growing wine sector with proximity to Santa Ynez and Foxen Canyon wine trails. The city also thrives on retail, with major centers like the Crossroads and Enos Ranch, and has seen recent growth in consumer spending, construction, and property values, with residential and commercial development adding \$88–\$97 million in valuation annually.

**Downtown Area:** Located in the central portion of the City of Santa Maria. The area businesses are strip-type commercial with several professional office complexes. The Westside Mall complex is just 1 block away to the south and southeast. The area is considered to be the central business and shopping area of central Santa Maria.

**Downtown Revitalization:** Located in Santa Maria, the Empire Building's immediate area is undertaking extensive downtown revitalization which focuses on multi-story mixed-use buildings for residential and commercial use, plus a new Heritage Walk public plaza. Plans call for approximately 336 apartments within a two and a half block radius, with 104 apartments currently under construction on the adjacent parcel. Key revitalization development projects include the Gateway Project, the Heritage Walk Lofts in the former Mervyn's/Fallas building, and two other Vernon Group projects - the 82 unit Alvin Newton Apartments and 150-unit Perlman Apartments. A new El Super market in the former Sears building is also planned to serve as a major catalyst in reshaping the downtown area.

# DEMOGRAPHICS

210 WEST MAIN STREET



Legend: ○ 1 Mile ○ 3 Miles ○ 5 Miles

Category	Sub-category	1 Mile	3 Miles	5 Miles
Population	Male	18,890	54,145	61,781
	Female	17,892	53,029	60,939
	Total Population	36,782	107,174	122,720
Race / Ethnicity	White	11,310	34,778	41,295
	Black	360	1,511	1,792
	Am In/AK Nat	140	300	344
	Hawaiian	22	86	110
	Hispanic	23,169	63,040	70,539
	Asian	1,177	5,316	6,087
	Multiracial	526	1,854	2,246
	Other	81	279	307
Housing	Total Units	9,687	30,469	36,274
	Occupied	8,675	27,396	32,627
	Owner Occupied	2,392	12,833	16,702
	Renter Occupied	6,283	14,563	15,925
	Vacant	1,012	3,072	3,648
Age	Ages 0 - 14	8,104	22,479	25,395
	Ages 15 - 24	7,193	20,027	22,455
	Ages 25 - 54	15,160	42,395	47,703
	Ages 55 - 64	2,766	9,414	11,217
	Ages 65+	3,560	12,858	15,951
Income	Median	\$65,313	\$85,545	\$88,330
	Under \$15k	693	1,748	2,057
	\$15k - \$25k	719	1,687	1,834
	\$25k - \$35k	721	1,720	2,055
	\$35k - \$50k	1,166	2,956	3,328
	\$50k - \$75k	1,648	4,029	4,767
	\$75k - \$100k	1,133	3,697	4,259
	\$100k - \$150k	1,361	6,028	7,236
	\$150k - \$200k	648	2,810	3,440
	Over \$200k	587	2,722	3,650



210-212 WEST MAIN STREET

# Team Profile

KW REGIONAL ADVISORS

3

# KW REGIONAL ADVISORS

210-212 WEST MAIN STREET



**KW Regional Advisors**  
Your Commercial Real Estate Resource  
Retail & Industrial Brokerage Services

# KW REGIONAL ADVISORS

210-212 WEST MAIN STREET



## MISSION STATEMENT

To create a boutique alliance of key regional agents from Los Angeles to San Luis Obispo County, working together to provide buyers and sellers greater opportunities within the region. Uniting the Markets just north of Los Angeles and the opportunities they offer, with the core investment community of the state's largest metro. Bringing to life the foundational premises of Local Expertise & Community Presence with a National Commercial Real Estate Reach. LOCAL/REGIONAL & GLOBAL.



## THE TEAM

**David Moskowitz (Regional Ambassador KW Commercial Central Southern Region):** David is Currently the Regional Ambassador for KW Commercial in the CACentral Southern Region. Formerly the Managing Director for KW Commercial Hollywood Hills, Brentwood and in the Central Coast Region of California. David was also a founding member of the KW Commercial National Leadership Counsel and Co-Chair of the divisions National Education Committee. David has built a successful and comprehensive real estate practice based on knowing his clients goals, ethics, diligence, superior service, professionalism and long-term relationships.

**Kathy Partch (Director of Sales, Los Angeles & Ventura County):** Kathy is Director of Commercial Sales at ICS Real Estate, an independently owned division of KW Commercial focused primarily in Southern California. She brings a wealth of professional experience as an Accountant, Principal, Builder, Syndicator and Investor for over 25-years. Focused on business owners, Kathy and her team specialize in industrial warehouses, manufacturing, retail shopping centers and single-tenant business properties, but experienced across all commercial real estate asset types.

**Scott Taylor (Senior Commercial Advisor, San Luis Obispo County):** An accomplished real estate professional with more than two decades of experience, Scott is a trusted commercial advisor serving the California Central Coast. As a licensed broker across four states (California, Arizona, Nevada, and Utah), Scott has developed an expertise in medical and dental practice sales alongside his work in retail, mixed-use, retail and multifamily property transactions. Scott's leadership experience is extensive. As Principal Broker at Keller Williams Realty Central Coast from 2016-2020, he managed over 200 agents and brokers, overseeing more than 900 transactions annually. His ability to guide large teams through complex deals and maintain high professional standards has earned him a reputation for results-driven leadership.



# KW REGIONAL ADVISORS

210-212 WEST MAIN STREET



## PROFILE



### DAVID MOSKOWITZ

KW Commercial Regional Ambassador,  
Central Southern  
DRE# 01372552  
323-493-3659  
dmoskowitzkw@gmail.com

## PROFESSIONAL BACKGROUND

Los Angeles/Central Coast KW Commercial  
Regional Ambassador, California Central/Southern

Director, Mentorship/Training KW Commercial  
Burbank/Glendale

Former Division Head, KW Commercial:  
Former Division Head, KW Commercial Hollywood Hills

Former Managing Director, KW Commercial: Central Coast

## SPECIALTY

- Retail Sales, STNL & Strip Centers
- Multifamily and Investment Property
- 1031 Tax Deferred Exchanging

## SUMMARY

David Moskowitz is currently the Regional Ambassador for KW Commercial in the CA-Central Southern Region. Formerly the Managing Director for KW Commercial Hollywood Hills, Brentwood and in the Central Coast Region of California. David was also a founding member of the KW Commercial National Leadership Counsel and Co-Chair of the Commercial Division National Education Committee.

## PROFILE



### KATHY PARTCH

Director Commercial Sales  
Los Angeles/Ventura  
DRE #01004568  
323-230-0407  
Kpartch@kwcommercial.com

## PROFESSIONAL BACKGROUND

2025 SRAR Commercial & Investment Division Board  
Member SRAR (Southland Regional Realtors® Association)

KW Commercial Regional Ambassador Associate

CA Central/Southern

## SPECIALTY

- Retail Sales and Leasing
- Industrial Sales and Leasing
- 1031 Tax Deferred Exchanging

## SUMMARY

Focused on business owners, Kathy specializes in industrial warehouses, manufacturing, retail shopping centers and single-tenant business properties, but experienced across all commercial real estate asset types. Kathy is also an expert in 1031 Exchanges and exchange alternatives for both investment and retirees. Kathy adds value through assisting her clients with real property ownership or investments.

## PROFILE



### SCOTT TAYLOR, MBA

Sr Commercial Advisor, Broker Associate  
San Luis Obispo/Santa Barbara  
DRE #01864709  
805-540-4825  
scotttaylorteam@gmail.com

## PROFESSIONAL BACKGROUND

Senior Commercial Advisor, KW Commercial, Central Coast

VP Operations, Southwest States, Integrity Practice Sales  
2020- 2024

Commercial Broker Associate, KW Commercial: SLO/SB  
Counties 2016-2020

## SPECIALTY

- Multifamily and Investment Property
- Dental/Medical Leasing & Sales Leasing,
- Industrial and Retail Investments

## SUMMARY

An accomplished real estate professional with more than two decades of experience, Scott is a trusted commercial advisor serving the California Central Coast. As a licensed broker across four states (California, Arizona, Nevada, and Utah), Scott has developed an expertise in medical and dental practice sales alongside his work in retail, mixed-use, and industrial. Scott's leadership experience is extensive. As Principal Broker at Keller Williams Realty Central Coast from 2016-2020, he managed over 200 agents and brokers, overseeing more than 900 transactions annually. Scott is also dedicated to the local real estate community, having served as Chairman and Interim Board Member for the local Association of Realtors.