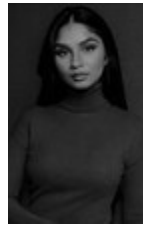




## Harrietts Bluff Rd - Woodbine, GA

Five parcels total and client is possibly willing to divide these dependent on terms and price. Water and sewer are available for all parcels. Zoning is C4-Commercial for highway services.

**BERKSHIRE HATHAWAY** | **BAY STREET REALTY GROUP**  
HOMESERVICES



**Jasmine Patel**

Berkshire Hathaway HomeServices Bay Street Realty  
5 E Perry St, Savannah, GA 31401  
[jasmine@baystreetrealtygroup.com](mailto:jasmine@baystreetrealtygroup.com)  
(912) 233-6000

# Harrietts Bluff Rd Woodbine, GA

093 011 (1.89 AC) - \$280,000  
093 011A (1.90 AC) - \$265,000  
093 011B (0.9 AC) - \$155,000  
093 011C Easement  
093 012 (1.85 AC) - \$330,000  
093 037 (22.52 AC - \$3,567,295.00

- 5 parcels right off of Exit 7 on I-95
- 7.2 miles from Florida Border
- 104 miles from Port of Savannah
- 26.5 miles from Port of Brunswick



Price: \$4,597,295

Property Type: Land

Property Subtype: Commercial

Proposed Use: Commercial

Sale Type: Investment or Owner User

Total Lot Size: 29.06 AC

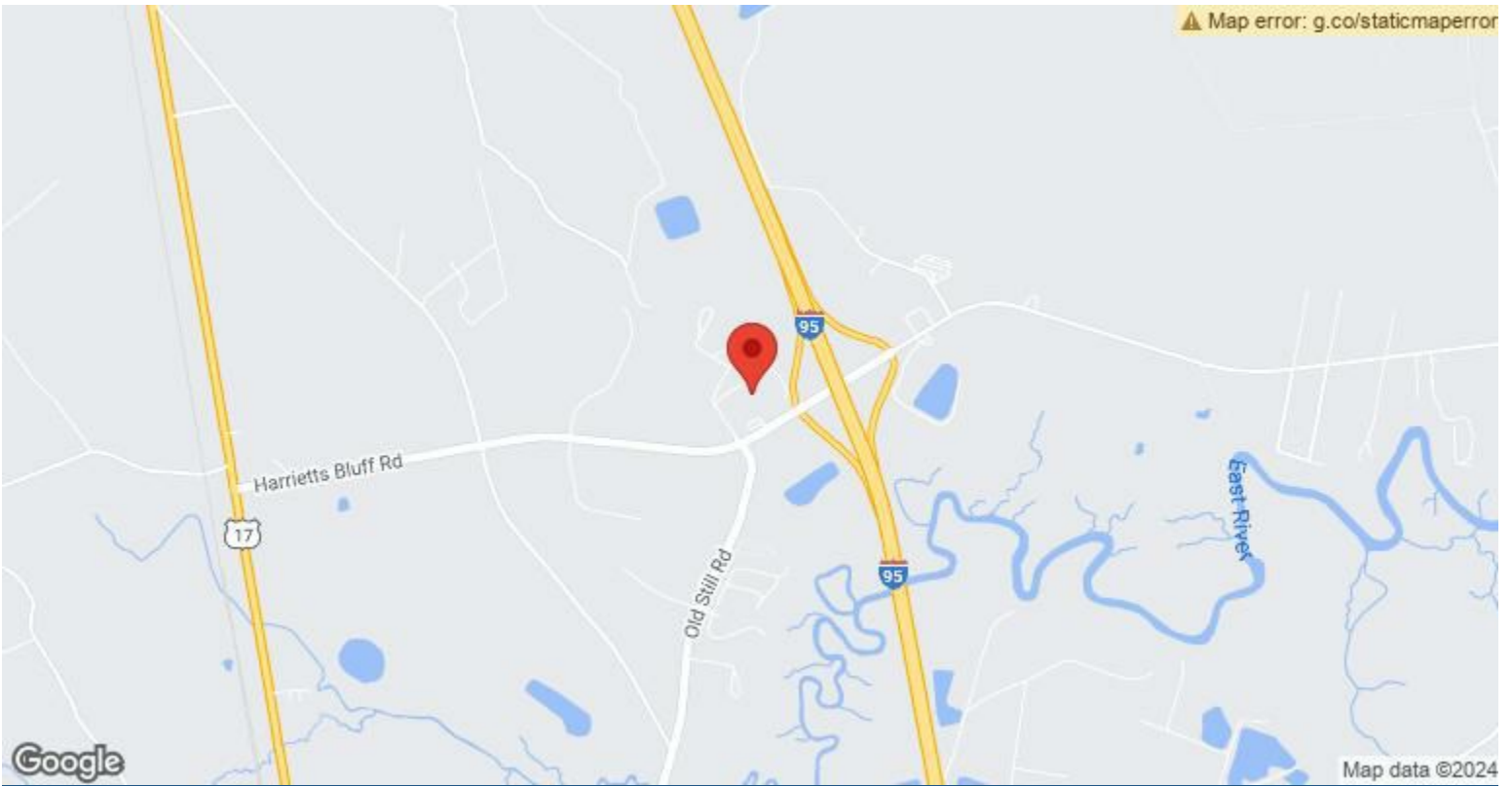
Sale Conditions: Build to Suit

No. Lots: 5

Zoning Description: C-4

APN / Parcel ID:

093 011, 039 011A, 093 011B, 093 011C (easement), 093 012, 093 037



**Harrietts Bluff Rd, Woodbine, GA 31569**