

FOR LEASE | OLD PORT OFFICE SPACE

424 Fore Street | Portland, ME



THIRD FLOOR OFFICE SPACE

- 3,050± SF total on the third floor with expansive mezzanine space
- Centrally located in Portland's Old Port with a walkability score of 98 - Walker's Paradise
- The Hyatt Hotel and Fore Street Garage with shops are located just across the street

LEASE RATE: \$13.75/SF MG



PETER HARRINGTON

207.772.0088 D

207.358.7916 C

peter@malonecb.com

MALONE COMMERCIAL BROKERS

5 Moulton Street • Suite 3

Portland, ME 04101

207.772.2422 • malonecb.com

PROPERTY SUMMARY

424 Fore Street | Portland, ME



OWNER: Soletsky LLC

DEED: Book 12315, Page 41

ASSESSOR: Map , Block , Lot

BUILDING SIZE: 10,875± SF

SPACE SIZE: 3A/3A-M: 2,028± SF
3B-M: 1,022± SF

STORIES: Three (3)

YEAR BUILT: 1900

CONSTRUCTION: Brick/stone

SIDING: Brick

FLOORING: Carpet

LIGHTING: Fluorescent

HVAC: Central air

UTILITIES: Municipal water & sewer

RESTROOM: Yes

ELEVATOR: None

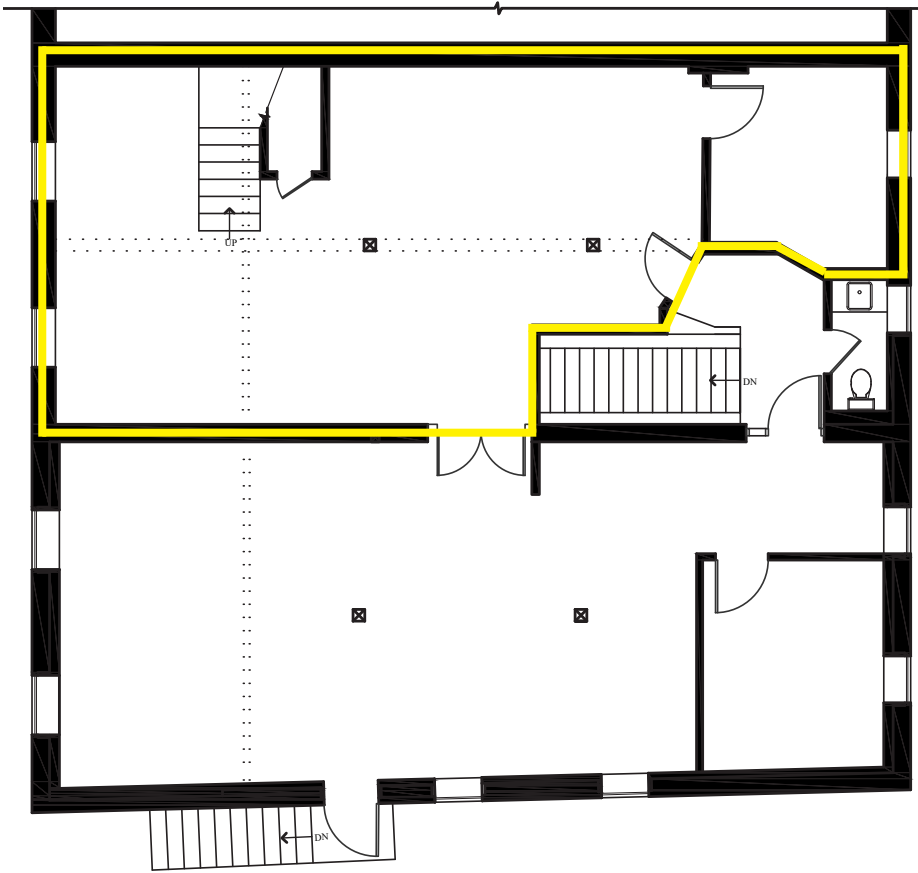
PARKING: Street parking and local garages at market rates

ZONING: B3



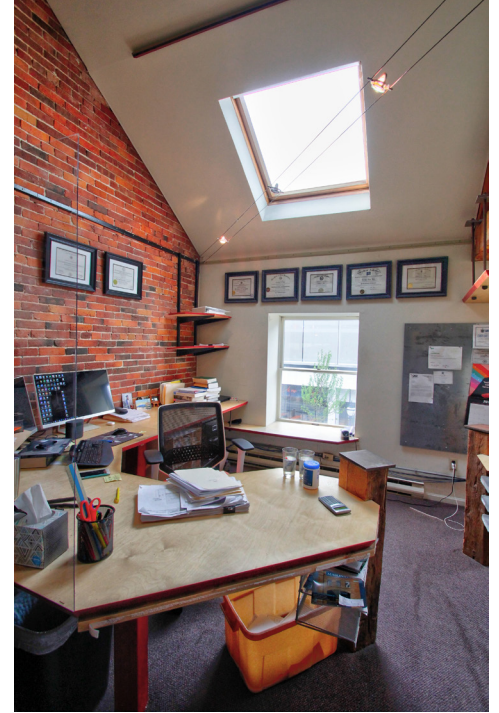
FLOOR PLANS

424 Fore Street | Portland, ME



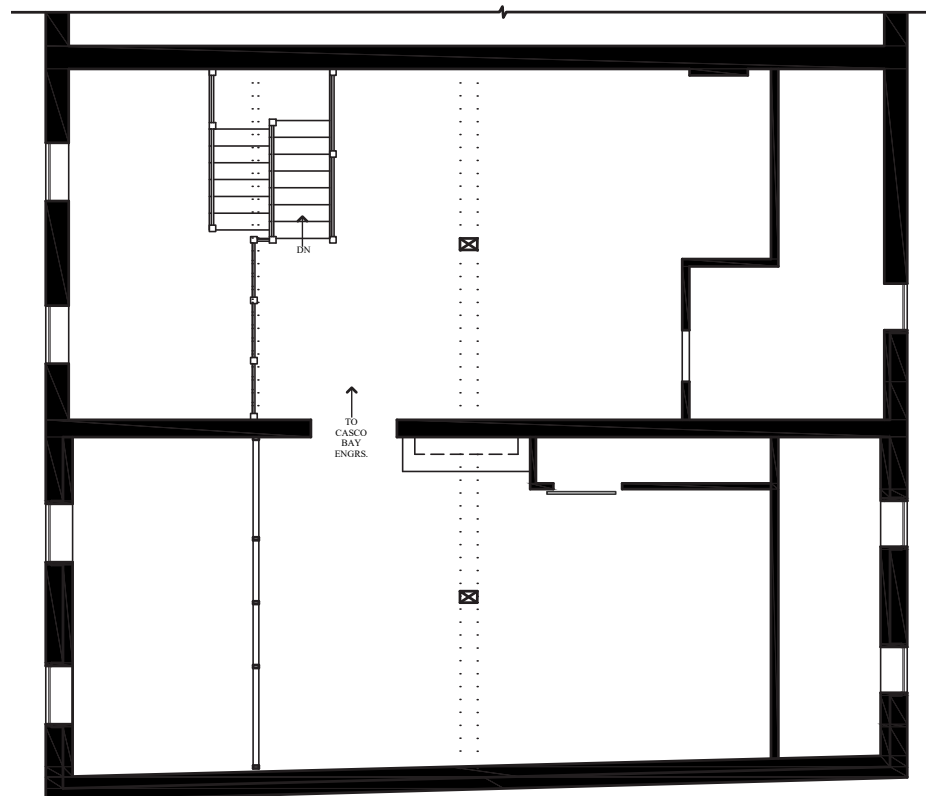
3rd FLOOR

1,022 ± SF



MEZZANINE

2,028 ± SF

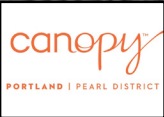


FOR LEASE | OLD PORT OFFICE SPACE

424 Fore Street | Portland, ME



SUBJECT PROPERTY



PETER HARRINGTON
207.772.0088 D
207.358.7916 C
peter@malonecb.com

MALONE COMMERCIAL BROKERS
5 Moulton Street • Suite 3
Portland, ME 04101
207.772.2422 • malonecb.com