



### OFFERING SUMMARY

<b>LEASE RATE:</b>	<b>\$12 (MG)</b>
<b>AVAILABLE SF:</b>	<b>940-1,210 SF</b>
<b>ZONING:</b>	<b>C2B</b>

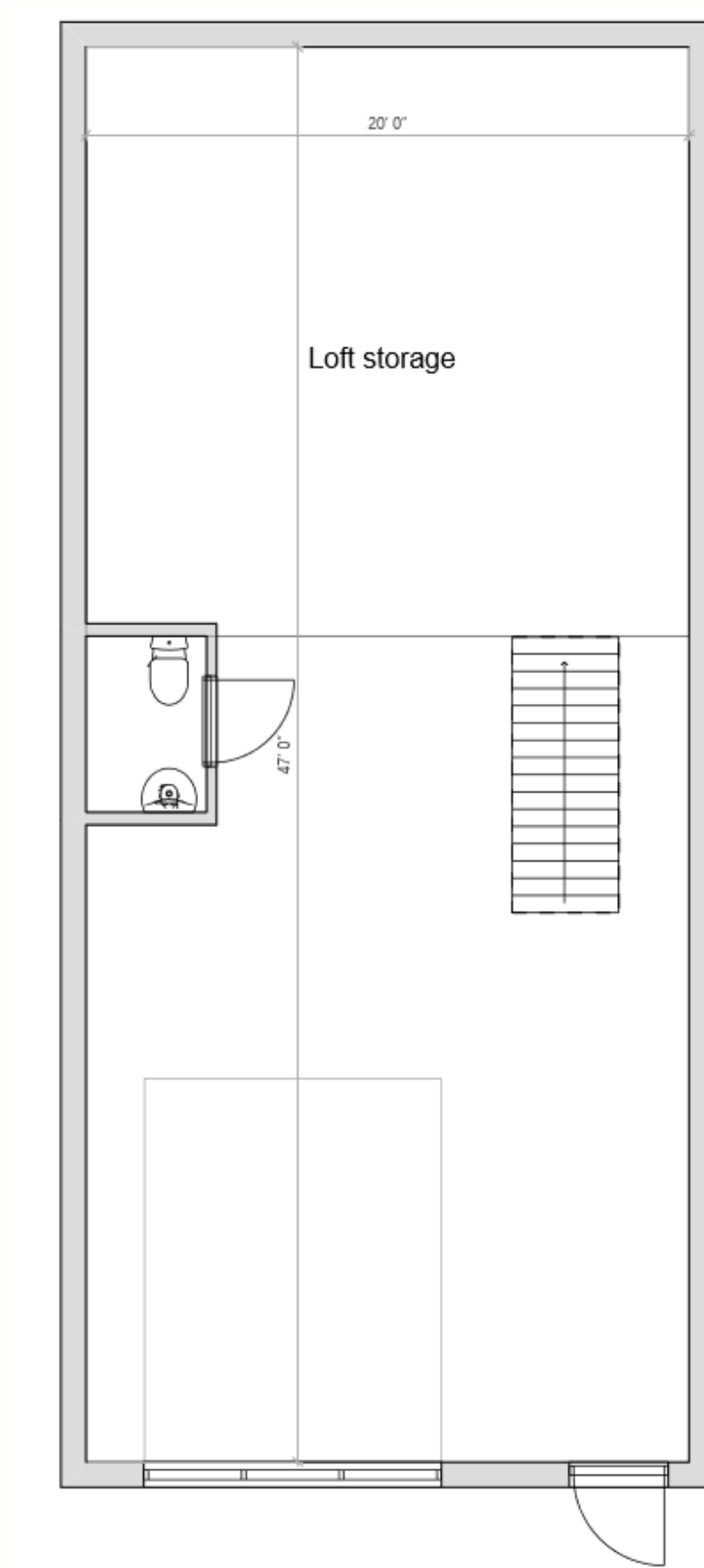
### LOCATION OVERVIEW

Two versatile warehouse spaces available on Ann Arbor's west side: 940 sq ft with a storage mezzanine and 1,210 sq ft with a loading dock door—perfect for businesses seeking functional and flexible space, offering easy access to I-94 and M-14, just minutes from downtown Ann Arbor!

# West Ann Arbor Warehouse

2241 W Liberty St., MI 48103

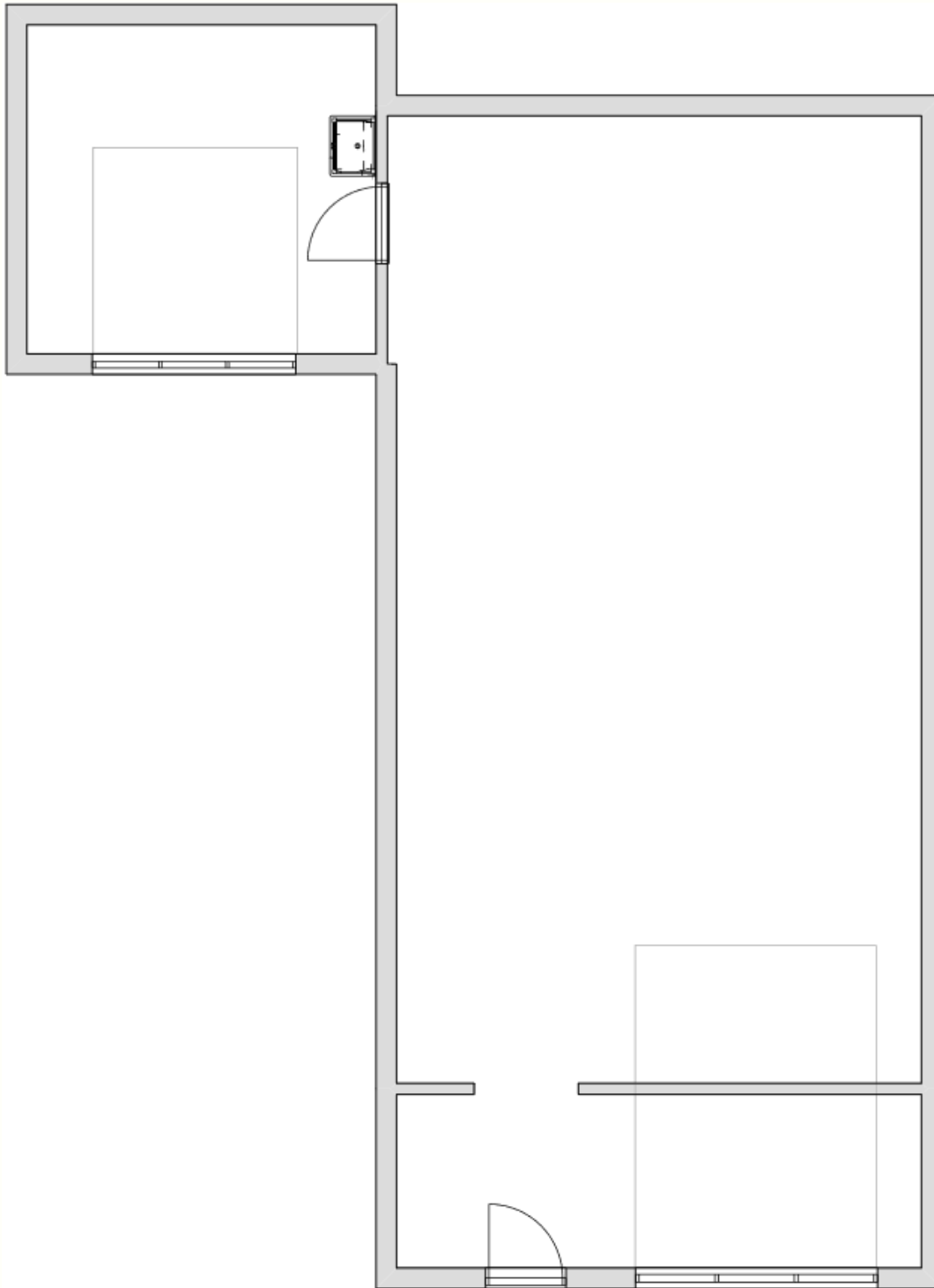
Warehouse for Lease // Floorplan 2241



# West Ann Arbor Warehouse

2245 W Liberty St., MI 48103

Warehouse for Lease // Floorplan 2245



# Ann Arbor Warehouse

2241 - 2245 W Liberty St., MI 48103

---

Warehouse for Lease // Broker



---

## TYLER BURGOON

Broker / Operations Director

[tyler@jpcommercialre.com](mailto:tyler@jpcommercialre.com)

office 734 994 8800

cell 734 730 5633



JP COMMERCIAL REAL ESTATE (JPCRE) DOES NOT MAKE ANY REPRESENTATIONS OR WARRANTIES, EXPRESS OR IMPLIED, AS TO THE ACCURACY OR COMPLETENESS OF THE INFORMATION CONTAINED HEREIN, AND NOTHING CONTAINED HEREIN IS OR SHALL BE RELIED UPON AS A PROMISE OR REPRESENTATION AS TO THE FUTURE REPRESENTATION OF THE PROPERTY. THIS MAY INCLUDE CERTAIN STATEMENTS AND ESTIMATES WITH RESPECT TO THE PROPERTY. JPCRE DISCLAIMS ANY AND ALL LIABILITY FOR REPRESENTATIONS OR WARRANTIES, EXPRESSED OR IMPLIED, CONTAINED IN OR OMITTED INFORMATION. THE INFORMATION CONTAINED HEREIN IS SUBJECT TO CHANGE WITHOUT NOTICE AND THE RECIPIENT OF THESE MATERIALS SHALL NOT LOOK TO JPCRE OR THE JPCRE ADVISOR NOR ANY OF THEIR OFFICERS, EMPLOYEES, REPRESENTATIVES, INDEPENDENT CONTRACTORS OR AFFILIATES, FOR THE ACCURACY OR COMPLETENESS THEREOF.