

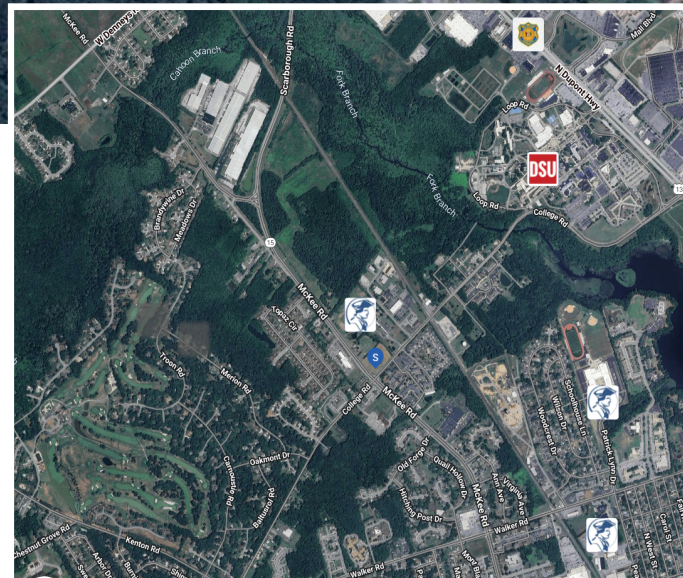
# 3.51+/- Acres For Sale

1205 McKee Rd  
Dover DE 19904



## HIGHLIGHTS:

- » 3.51+/- Acres of Land on cleared corner lot
- » Great location at busy intersection of McKee and College Road
- » Zoned: C2A
- » Sale Price: \$1,600,000



DEMOGRAPHICS	1 MILE	3 MILE	5 MILE
2025 Population	9,164	45,949	74,382
2025 Average HH Income	\$89,946	\$81,930	\$89,171

Exclusively Marketed by:

**Charles Rodriguez**  
R and R Commercial Realty  
Broker  
(302) 674-3400 x111  
ccrod1@aol.com



46 S. State Street  
Dover, DE 19901