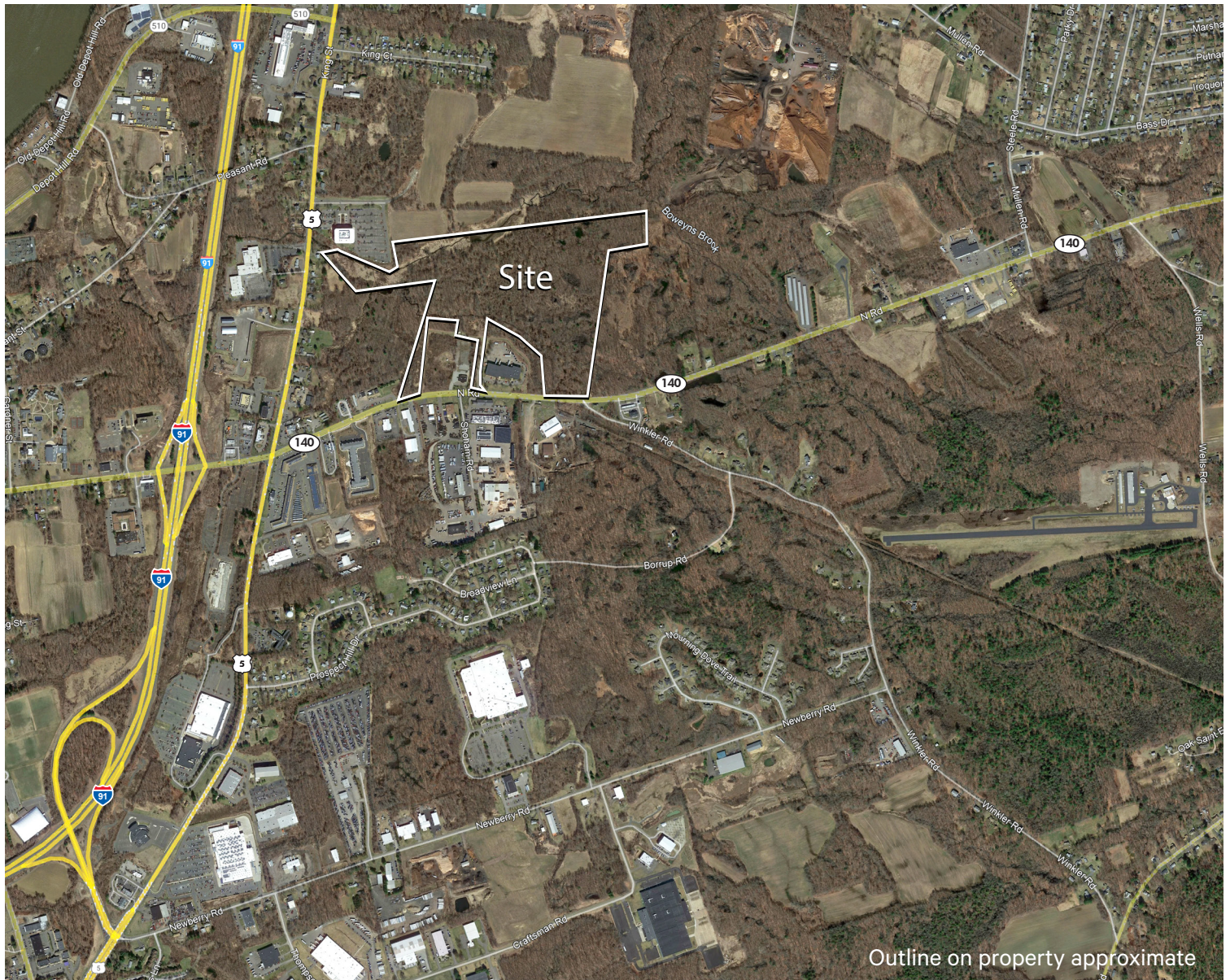


# 67.15 Acres

35 North Road | East Windsor, CT



Outline on property approximate



# 67.15 Acres - Industrial Development Site

35 North Road | East Windsor, CT

For Sale/Lease

## Property Overview

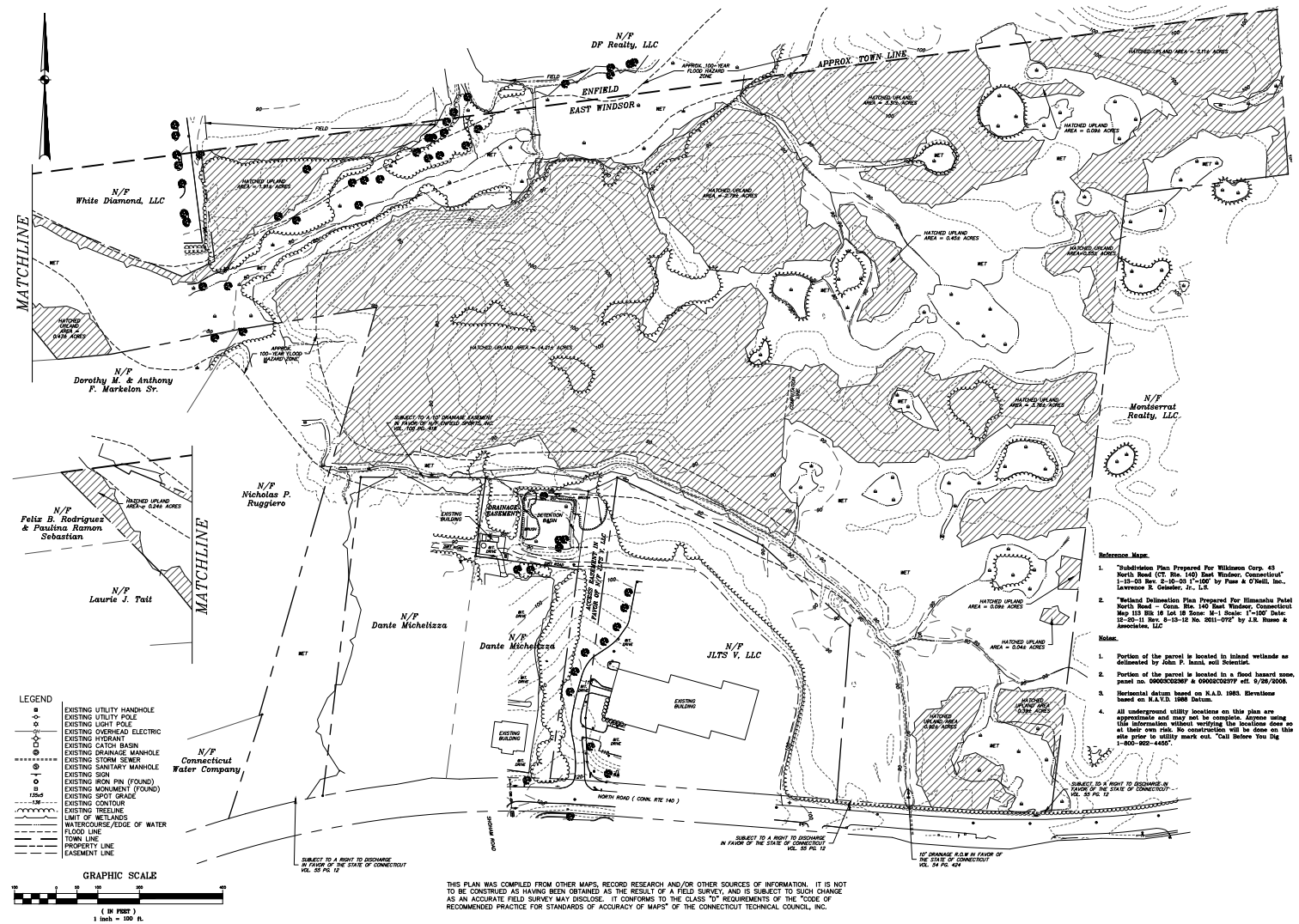
CBRE is pleased to offer this 67.15-acre parcel, located on Route 140, North Road in East Windsor, Connecticut. This piece of land is located with great highway access on Interstate 91, Exit 45.

- + **Total Available Acres:** 67.15
- + **Zoning:** B-3
- + **Electric/Gas:** Eversource
- + **Water:** Connecticut Water Company (15" main)
- + **Sewer:** Town of East Windsor (15"-18" main)
- + **Development Potential:** 215,000 SF
- + **Location:**
  - 3 minutes to Interstate 91 (0.5 miles)
  - 10 minutes to Bradley International Airport (7.5 miles)
- + **Sale Lease:** Negotiable

## Concept Plan - Trailer Parking



## Site Plan

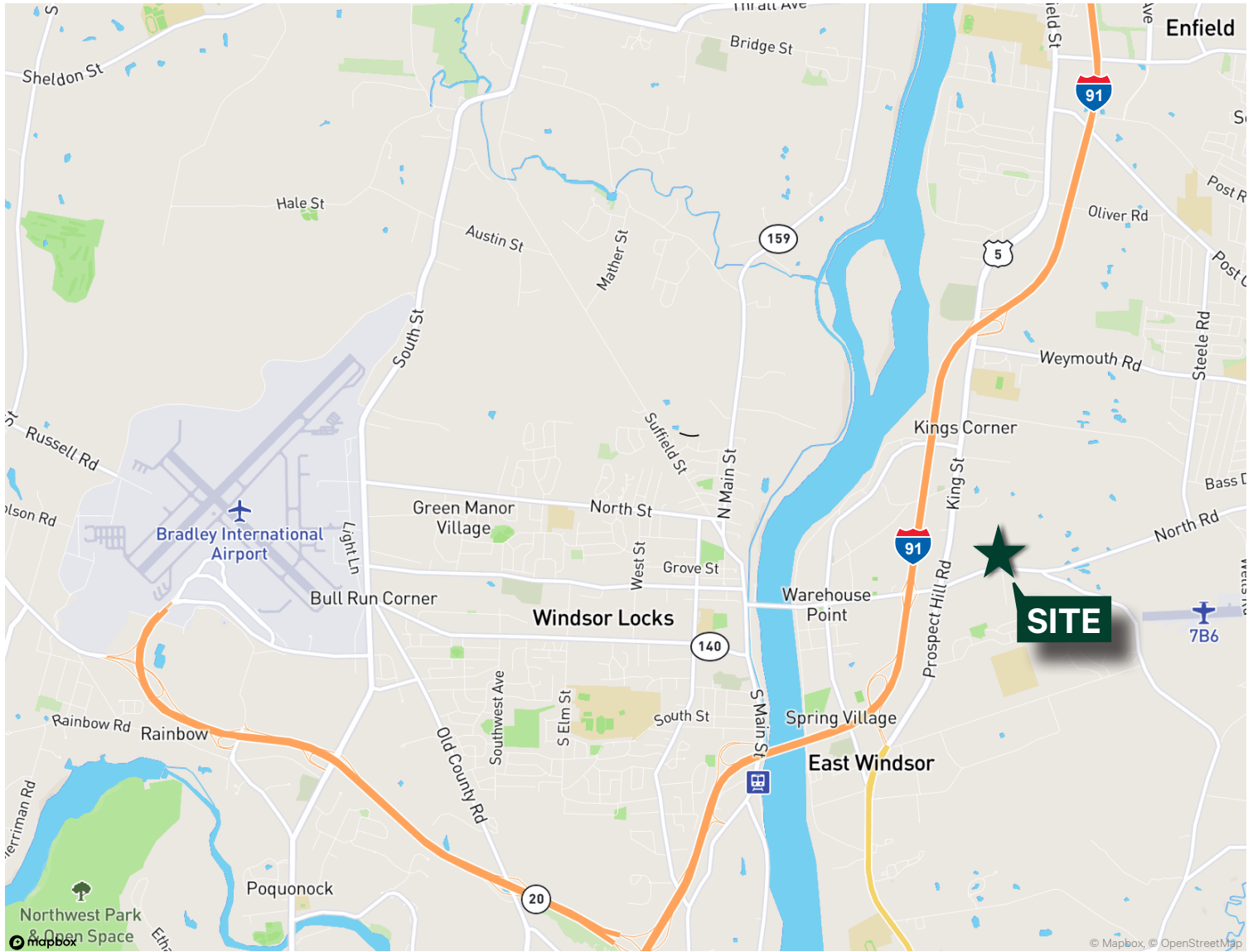


## 67.15 Acres - Industrial Development Site

35 North Road | East Windsor, CT

For Sale/Lease

### Location Map



### Contact Us

#### John Reed, SIOR

Senior Vice President

+1 413 732 9150

+1 860 559 1562 (c)

john.reed@cbre.com

#### Jack Reed

Vice President

+1 860 987 4789

+1 860 716 8493 (c)

jack.reed@cbre.com

© 2025 CBRE, Inc. All rights reserved. This information has been obtained from sources believed reliable but has not been verified for accuracy or completeness. CBRE, Inc. makes no guarantee, representation or warranty and accepts no responsibility or liability as to the accuracy, completeness, or reliability of the information contained herein. You should conduct a careful, independent investigation of the property and verify all information. Any reliance on this information is solely at your own risk. CBRE and the CBRE logo are service marks of CBRE, Inc. All other marks displayed on this document are the property of their respective owners, and the use of such marks does not imply any affiliation with or endorsement of CBRE. Photos herein are the property of their respective owners. Use of these images without the express written consent of the owner is prohibited.