

# MEDICAL OFFICE FOR LEASE

3932 LONG BEACH BOULEVARD | LONG BEACH, CA 90807

**LEE & ASSOCIATES**  
COMMERCIAL REAL ESTATE SERVICES



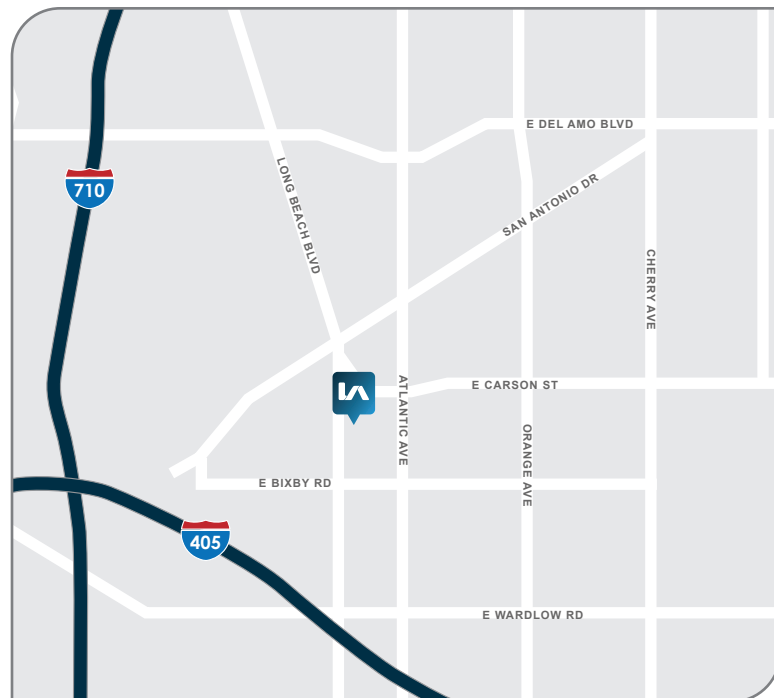
## PROPERTY FEATURES

**SIZE:** For Lease - Unit B -  $\pm$ 4,831 SF

**RATE:** \$3.45 / PSF NNN

**ZONING:** CCA

- ▶ Class A Medical Office - Built in 2006
- ▶ Free Parking - 5.0 / 1,000 SF
- ▶ Short Distance to Long Beach Memorial Hospital
- ▶ Minutes away from 405 and 710 Freeways



LOCAL EXPERTISE. INTERNATIONAL REACH. WORLD CLASS.

**Jeff Coburn, CCIM, SIOR**  
Principal | License ID 01303169  
PH: 562.354.2511  
E: jcoburn@leelalb.com

**Shaun McCullough, CCIM, SIOR**  
Principal | License ID 01380928  
PH: 562.354.2517  
E: smccullough@leelalb.com

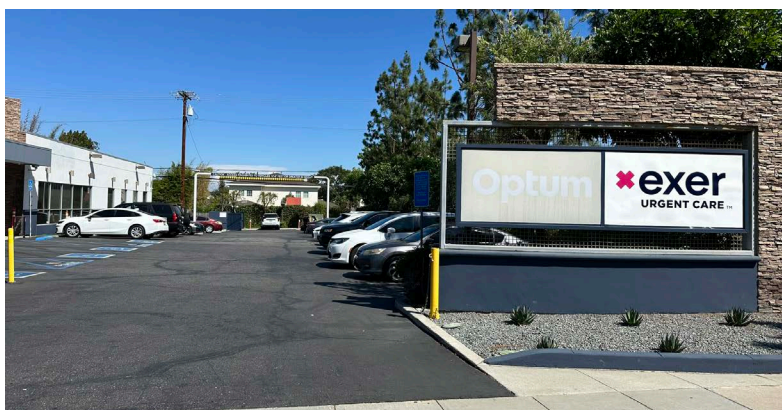
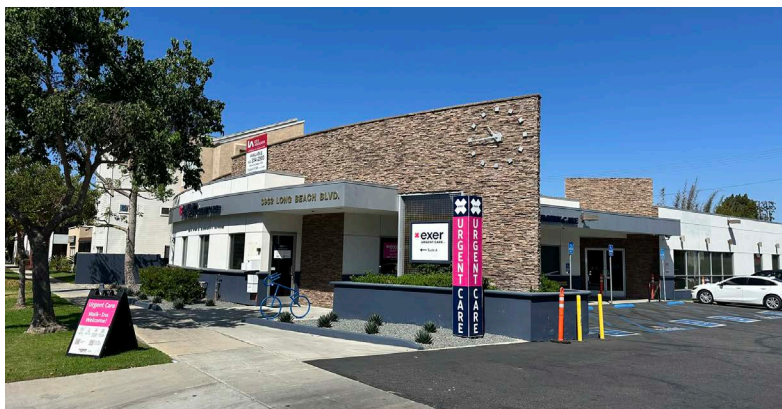
**Coleman Kistner**  
Associate | License ID 02198995  
PH: 562.354.2535  
E: ckistner@leelalb.com



# MEDICAL OFFICE FOR LEASE

3932 LONG BEACH BOULEVARD | LONG BEACH, CA 90807

**LEE & ASSOCIATES**  
COMMERCIAL REAL ESTATE SERVICES



Copyright © Lee & Associates. All rights reserved. No part of this work may be reproduced or distributed without written permission of the copyright owner. The information contained in this report was gathered by Lee & Associates from sources believed to be reliable. Lee & Associates, however, makes no representation concerning the accuracy or completeness of such information and expressly disclaims any responsibility for any inaccuracy contained herein. 9.9.25

**LOCAL EXPERTISE. INTERNATIONAL REACH. WORLD CLASS.**

**Jeff Coburn, CCIM, SIOR**  
Principal | License ID 01303169  
PH: 562.354.2511  
E: jcoburn@leelalb.com

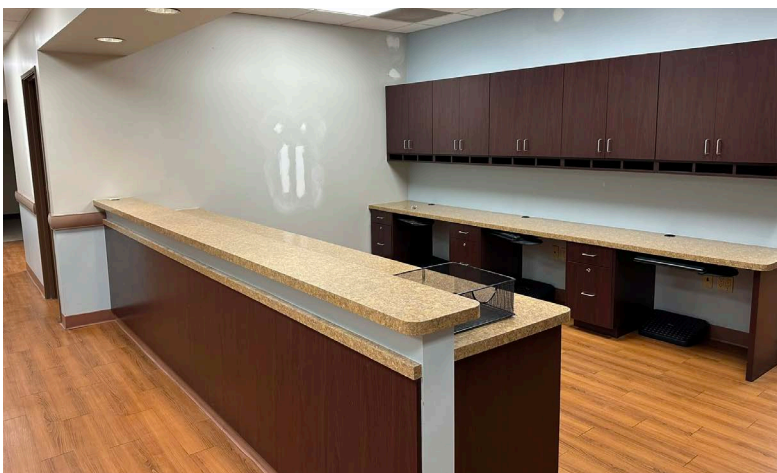
**Shaun McCullough, CCIM, SIOR**  
Principal | License ID 01380928  
PH: 562.354.2517  
E: smccullough@leelalb.com

**Coleman Kistner**  
Associate | License ID 02198995  
PH: 562.354.2535  
E: ckistner@leelalb.com



# MEDICAL OFFICE FOR LEASE

3932 LONG BEACH BOULEVARD | LONG BEACH, CA 90807



Copyright © Lee & Associates. All rights reserved. No part of this work may be reproduced or distributed without written permission of the copyright owner. The information contained in this report was gathered by Lee & Associates from sources believed to be reliable. Lee & Associates, however, makes no representation concerning the accuracy or completeness of such information and expressly disclaims any responsibility for any inaccuracy contained herein. 9.9.25

LOCAL EXPERTISE. INTERNATIONAL REACH. WORLD CLASS.

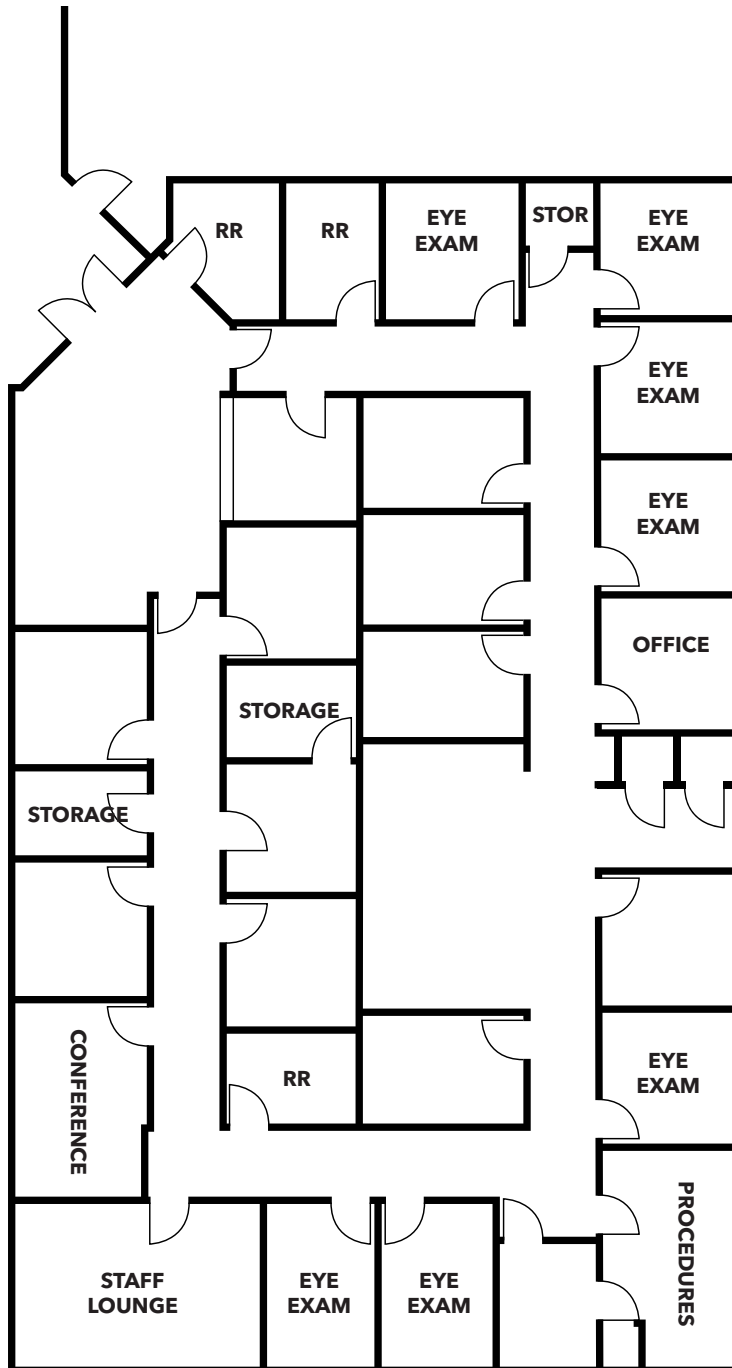
**Jeff Coburn, CCIM, SIOR**  
Principal | License ID 01303169  
PH: 562.354.2511  
E: jcoburn@leelalb.com

**Shaun McCullough, CCIM, SIOR**  
Principal | License ID 01380928  
PH: 562.354.2517  
E: smccullough@leelalb.com

**Coleman Kistner**  
Associate | License ID 02198995  
PH: 562.354.2535  
E: ckistner@leelalb.com

# MEDICAL OFFICE FOR LEASE

3932 LONG BEACH BOULEVARD | LONG BEACH, CA 90807



This plan and its measurements are approximate and not up to scale. It is the responsibility of the buyer/lessor to verify the property's measurements independently.

Copyright © Lee & Associates. All rights reserved. No part of this work may be reproduced or distributed without written permission of the copyright owner. The information contained in this report was gathered by Lee & Associates from sources believed to be reliable. Lee & Associates, however, makes no representation concerning the accuracy or completeness of such information and expressly disclaims any responsibility for any inaccuracy contained herein. 9.9.25

LOCAL EXPERTISE. INTERNATIONAL REACH. WORLD CLASS.

**Jeff Coburn, CCIM, SIOR**  
Principal | License ID 01303169  
PH: 562.354.2511  
E: jcoburn@leelalb.com

**Shaun McCullough, CCIM, SIOR**  
Principal | License ID 01380928  
PH: 562.354.2517  
E: smccullough@leelalb.com

**Coleman Kistner**  
Associate | License ID 02198995  
PH: 562.354.2535  
E: ckistner@leelalb.com