



EXCLUSIVE LISTING MEDICAL OFFICE CONDO FOR SALE

(856) 985-9522 • ROSECOMMERCIAL.COM

SHEPPARD OFFICE PARK 502 & 503 Sheppard Road, Voorhees, NJ



Property Description: One Story Medical Office Condo for Sale
Size: 2,476 +/- SF
Condo Fee: \$848.16 / Month
Taxes: \$11,737.44 (2025)
Sale Price: ~~\$430,000.00~~ \$410,000.00
Comments:

- Ideal for all medical uses
- Suite has many upgrades throughout
- Private entry to large open waiting area with reception, 4 large patient rooms, spacious lab, 2 private offices, conference room, kitchenette, and 2 bathrooms
- Close proximity to Cooper University Healthcare Jefferson Hospital and Virtua Health Systems
- Central to Voorhees, Marlton, Cherry Hill and Berlin

Michelle Marinello (Ext. 28)
mmarinello@rosecommercial.com
(856) 985-9522

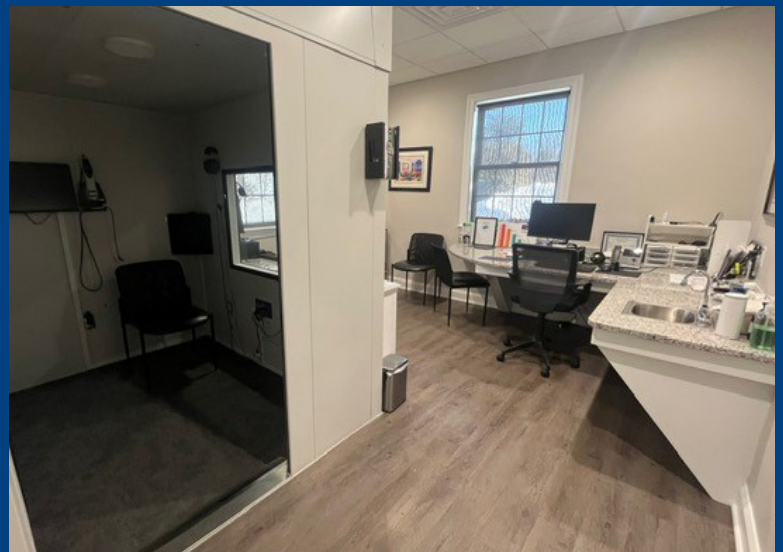
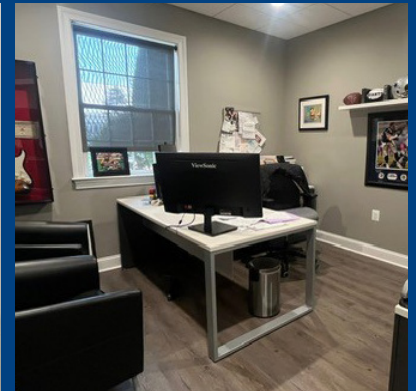
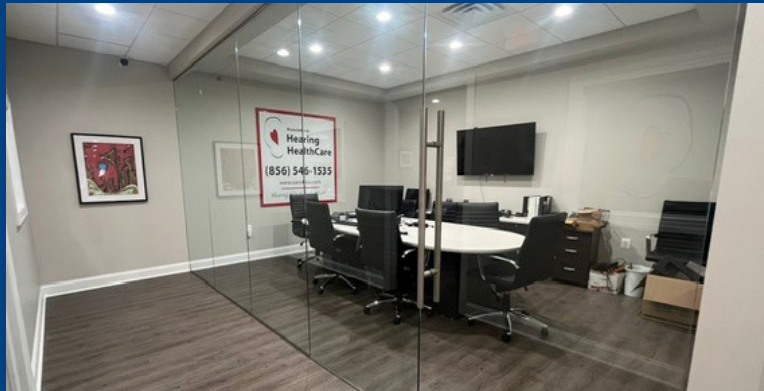
Adam Rose (Ext. 22)
arose@rosecommercial.com
(856) 985-9522

Rose Commercial Real Estate is a full service commercial real estate firm, specializing in all facets of the industry ~ representing buyers and sellers, landlords and tenants as well as investors both big and small. Key to our growth is experience combined with in depth understanding of the South Jersey real estate market. But that alone is only a part of the comprehensive service we provide clients. With our unique **CIRCLES FOR SUCCESS** and start-to-finish commitment, we make things happen.



EXCLUSIVE LISTING MEDICAL OFFICE CONDO FOR SALE

(856) 985-9522 • ROSECOMMERCIAL.COM





EXCLUSIVE LISTING MEDICAL OFFICE CONDO FOR SALE

(856) 985-9522 • ROSECOMMERCIAL.COM

502 & 503 Sheppard Road, Voorhees, NJ

FLOOR PLAN

