



Harbor Town Harmon Land

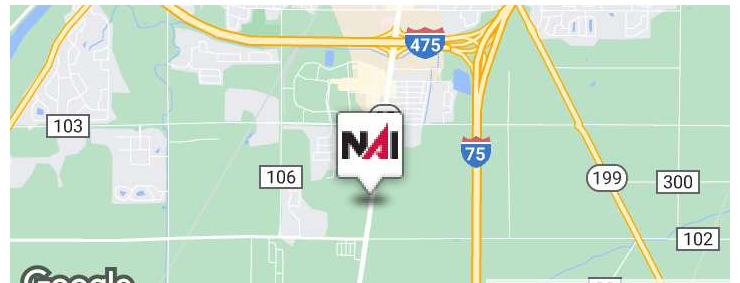
Perrysburg, Ohio 43551

Property Highlights

- Commercial Development Land for Sale
- Build-to-suit opportunity
- .25 Miles to Levis Commons
- .75 Miles south of I-475/US 23
- Tax incentives available

Property Overview

Acreage in fast developing Perrysburg, Ohio. Utilities are already in place at sites.



Offering Summary

Sale Price:	\$375,000 per Acre
Lot Size:	8.55 Acres

For More Information



Stephanie Kuhlman

O: 419 960 4410 x315
skuhlman@naitoledo.com



Becky Beck

O: 419 960 4410 x321
bbeck@naitoledo.com

Sale Price	\$375,000 / Acre
------------	------------------

Location Information

Building Name	Harbor Town Harmon Land
Street Address	Harbor Town Land
City, State, Zip	Perrysburg, OH 43551
County	Wood
Market	Toledo
Cross-Streets	N. Dixie Hwy. & Roachton Rd.
Road Type	Paved
Nearest Highway	I-475
Nearest Airport	Toledo Express Airport

Building Information

Number of Lots	1
----------------	---

Property Information

Property Type	Land
Property Subtype	Retail
Zoning	Commercial
Lot Size	8.55 Acres
Corner Property	Yes
Traffic Count	13714 (2023)
Traffic Count Street	N. Dixie Hwy.



1225.08 LAND USE AND BASE ZONING DISTRICT TABLE.

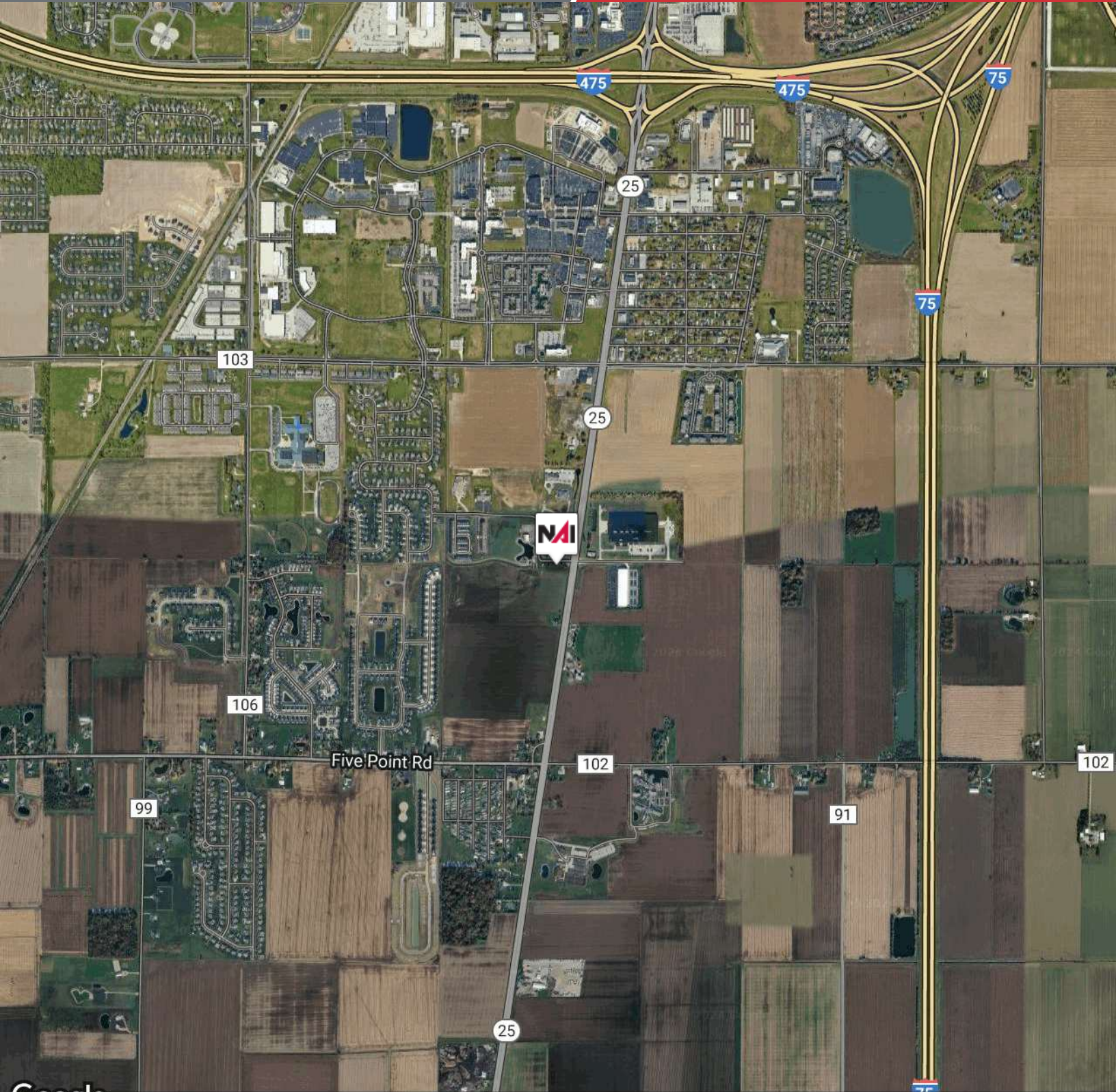
	Ag	Residential						Commercial				Office Service	Industrial		Special			Institutional INS
		R-1	R-2	R-3	R-4	R-5	RM	C-1	C-2	C-3	C-4		I-1	I-2	PBP	P	S-1	
Agricultural	A-1	R-1	R-2	R-3	R-4	R-5	RM	C-1	C-2	C-3	C-4	OS	I-1	I-2	PBP	P	S-1	
Farm Markets and Stands	P							S	S	S								
Kennels	P												S	S				
Plant Cultivation	P															P	P	P
Specialized Animal Raising	P	S																
Chicken Keeping	P	P	P	P	P													
	Ag	Residential						Commercial				Office Service	Industrial		Special			Institutional INS
	A-1	R-1	R-2	R-3	R-4	R-5	RM	C-1	C-2	C-3	C-4		OS	I-1	I-2	PBP	P	
Residential	A-1	R-1	R-2	R-3	R-4	R-5	RM	C-1	C-2	C-3	C-4	OS	I-1	I-2	PBP	P	S-1	
One Family Dwelling	P	P	P	P	P	P	P		P									
Two-Family Dwelling							P	P	P									
Multiple Family Dwellings							P											
Apartments Above 1st Floor									P			S						
Bed & Breakfast		S	S	S	S	S			S									
Assisted Living Units							P											S
Mobile Homes (1235.04w)																		
	Ag	Residential						Commercial				Office Service	Industrial		Special			Institutional INS
	A-1	R-1	R-2	R-3	R-4	R-5	RM	C-1	C-2	C-3	C-4		OS	I-1	I-2	PBP	P	
Commercial	A-1	R-1	R-2	R-3	R-4	R-5	RM	C-1	C-2	C-3	C-4	OS	I-1	I-2	PBP	P	S-1	
Agriculture, Construction, Semi- Truck Sales/Service	S												P	P				
Animal Services (outdoor)								S	S	S	P							
Animal Services (indoor)								P	P	P	P							
Automotive Oil & Lube Service Facilities										P	P					P		
Automotive Repair - General												S		P	P			
Automotive Repair - Light												P				P		
Automotive Sales or Lease for New and Used Vehicles-Outdoor													S	S	S	S		
Auto Wash												S				S		
Carry-Outs/Other Business, Alcoholic Beverages									S	S	S					S		
Commercial Recreational Facilities												S		S	S			
Commercial Schools									P	P	P	P				P		

	Ag	Residential						Commercial				Office Service	Industrial		Special			Institutional INS
Commercial	A-1	R-1	R-2	R-3	R-4	R-5	RM	C-1	C-2	C-3	C-4	OS	I-1	I-2	PBP	P	S-1	
Commercial semi- truck sales/service													P	P				
Drive-in commercial uses											P	S			S			
Entertainment and spectator sport facilities									P	P	P				P	S		S
Grocery stores									P	P	P				P			
Gym/Fitness Facility (< 5,000 GSF)								P	P	P	P	P		S	S			
Gym/Fitness Facility (>5,000 GSF)										P	P			S	S			
Massage establishment									S					S	S			
Medical marijuana																		
Motels and hotels										P	P					P		
Neighborhood business less than 10,000 sq.ft.								P	P	P	P	S				P		
Office and Banks								P	P	P	P	P				P		
Personal services								P	P	P	P	S				P		
Printing									P	P	P	P	P	P	P			
Recreational vehicles/equipment outdoor sales													S	S				
Restaurant carry-out only									P	P	P					P		
	Ag	Residential						Commercial				Office Service	Industrial		Special			Institutional INS
Commercial	A-1	R-2	R-3	R-4	R-5	RM	C-1	C-2	C-3	C-4	OS	I-1	I-2	PBP	P	S-1		
Restaurant drive-in									S	P					P			
Restaurant fast food								S	P	P					P			
Restaurant outdoor cafe								S	P2	S					P			
Restaurant full service								P	P	P		S			P			
Retail business: less than 60,000 GSF									P	P	P				P			
Retail business: more than 60,000 GSF										S	S				S			
Sale and storage of building materials	S										S		P	P	S			
Self-service storage											S		P	P	P			
Service station									S	S	P				P			
Sexually oriented business												S	S					
Shopping center									P	P								
Hospitality Facilities									S		S				P			
Rooming House		S	S	S	S	S			S									
Transient Habitation									S		S				P			
Repair Services, Consumer								P	P	P	P	P			P			
Nursery/green house	§ 1										P		P	P				
	Ag	Residential						Commercial				Office Service	Industrial		Special			Institutional INS
Office	A-1	R-2	R-3	R-4	R-5	RM	C-1	C-2	C-3	C-4	OS	I-1	I-2	PBP	P	S-1		
Medical Offices							S	P	P	P	P				P		S	
Medical Urgent Care Facilities										P		P	P	P			S	

	Ag	Residential					Commercial				Office Service	Industrial		Special			Institutional INS
	A-1	R-2	R-3	R-4	R-5	RM	C-1	C-2	C-3	C-4	OS	I-1	I-2	PBP	P	S-1	
Institutional	A-1	R-2	R-3	R-4	R-5	RM	C-1	C-2	C-3	C-4	OS	I-1	I-2	PBP	P	S-1	
Accessory	P	P	P	P	P	P	P	P	P	P	P	P	P	P	P		P
Cemetery	S	S	S													S	S
Child Day Care Centers		S	S	S	S	S	S	S	S	S	S	S		S			S
Club, Lodges, Fraternal and Civic Assembly									P	P				P			S
College and Universities																	S
Convalescent and Nursing Homes						S											S
Essential Services	P	P	P	P	P	P	P	P	P	P	P	P	P	P		S	P
Hospital														P			S
Institutional Use												S	S	P			S
Mortuaries/Funeral Homes							S	S	S	S				P			
Non-Commercial Recreation Facilities	S	S	S	S	S	S						S	S	S	S		
Parks and Recreation	S	S	S	S	S	S	S	S			S			S	S		
Part-Time Child Day Care Centers		S	S	S	S	S	S	S	S	S	S	S		P			S
Postal Service														P			S
Public and Private Schools							S		S	S							S
Public Service Facility	S	S	S	S	S	S	S	S	S	P		P	P	P			S
Public/Private Utility	S	S	S	S	S	S	P	P	P	P	P	P	P	P			S
Wireless Telecommunication Facility	S									S		S	S	S			S
	Ag	Residential					Commercial				Office Service	Industrial		Special			Institutional INS
	A-1	R-2	R-3	R-4	R-5	RM	C-1	C-2	C-3	C-4	OS	I-1	I-2	PBP	P	S-1	
Industrial	A-1	R-2	R-3	R-4	R-5	RM	C-1	C-2	C-3	C-4	OS	I-1	I-2	PBP	P	S-1	
Auto & Metal Salvage, Junk Yards													S				
Excavation of Sand, Gravel, Clay, Stone and Topsoil	S												S				
Food Processing												P	P	P			
Laboratories												P	P	S			
Manufacturing, Sale/Storage Building Materials												P	P				
Manufacturing: General													P				
Manufacturing: Light												P	P	P			
Oil & Gas Wells												S	S				S
Outside Storage	S											S	S	**			S
Publishing												P	P	P			
Research & Testing												P	P	P			
Transport & Trucking												S	S				
Warehousing												P	P	P			
Wholesale Business										P		P	P	P			
Wind Generator (Turbine)	S											S	S				S

Add text here...

NO WARRANTY OR REPRESENTATION, EXPRESS OR IMPLIED, IS MADE AS TO THE ACCURACY OF THE INFORMATION CONTAINED HEREIN, AND THE SAME IS SUBMITTED SUBJECT TO ERRORS, OMISSIONS, CHANGE OF PRICE, RENTAL OR OTHER CONDITIONS, PRIOR SALE, LEASE OR FINANCING, OR WITHDRAWAL WITHOUT NOTICE, AND OF ANY SPECIAL LISTING CONDITIONS IMPOSED BY OUR PRINCIPALS NO WARRANTIES OR REPRESENTATIONS ARE MADE AS TO THE CONDITION OF THE PROPERTY OF ANY HAZARDS CONTAINED THEREIN ARE TO BE IMPLIED.



Five Point Rd

103

25

25

102

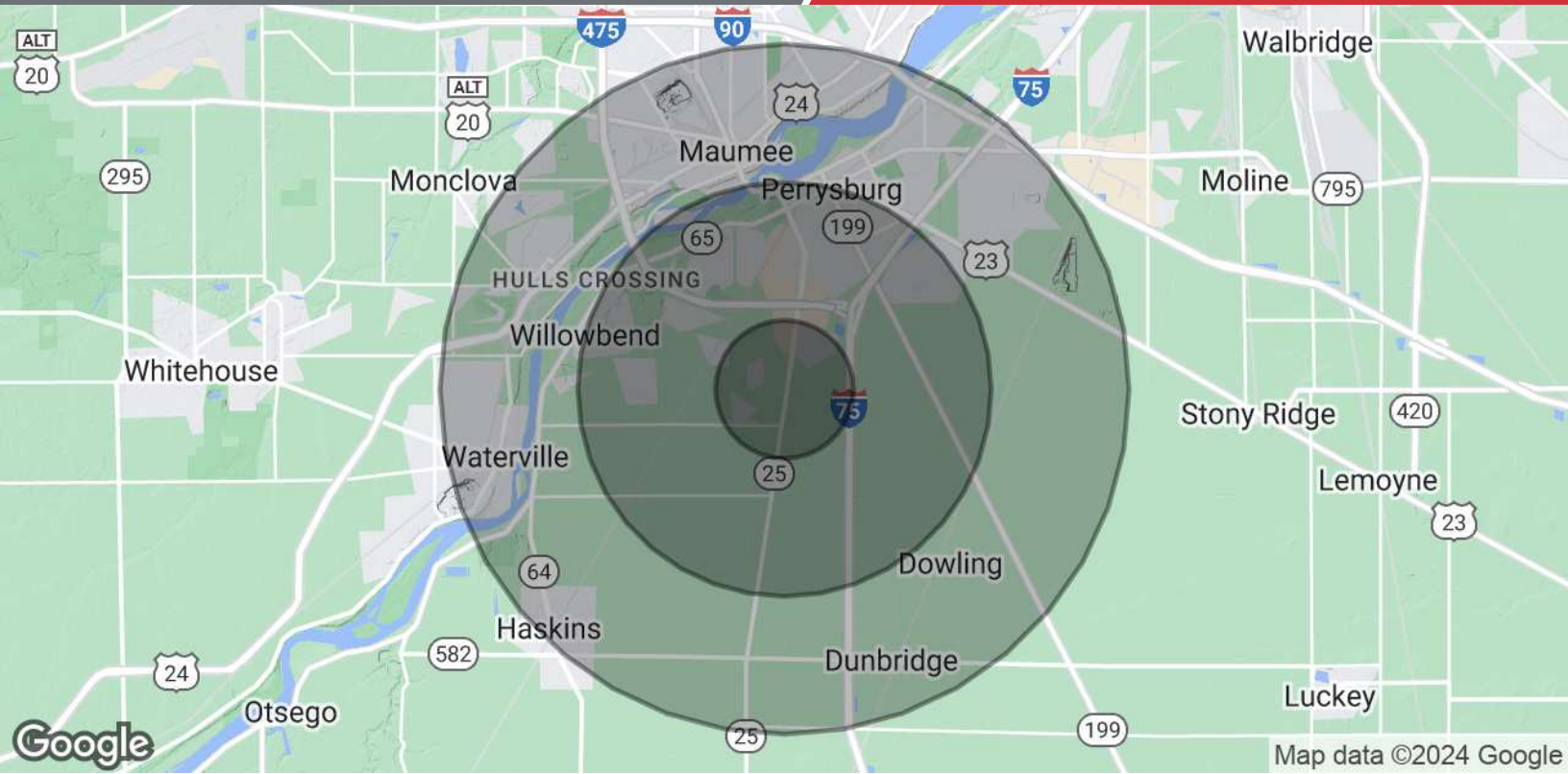
99

106

91

102

25



Population	1 Mile	3 Miles	5 Miles
Total Population	1,506	19,924	50,859
Average Age	40.2	38.2	41.7
Average Age (Male)	39.4	38.3	40.8
Average Age (Female)	40.6	38.4	42.6
Households & Income	1 Mile	3 Miles	5 Miles
Total Households	664	8,185	22,206
# of Persons per HH	2.3	2.4	2.3
Average HH Income	\$110,721	\$114,403	\$100,000
Average House Value	\$230,829	\$263,778	\$223,941

2020 American Community Survey (ACS)