

Goldenland Business Park

45 Goldenland Court, Units 100 & 110
Sacramento, CA 95834

NOW AVAILABLE

Features:

- Unit 100: \pm 1,714 SF Total with \pm 500 SF office and \pm 1,214 SF warehouse
- Unit 110: \pm 1,885 SF Total with \pm 600 SF office and \pm 1,285 SF warehouse
- Can be combined for \pm 3,599 SF Total with \pm 1,100 SF office and \pm 2,488 SF warehouse
- \pm 10' x 12' Grade-level doors
- Ample Parking
- Attractive storefront and landscaping
- \pm 18' Clear Height
- Easy access to Interstate 80 & Interstate 5

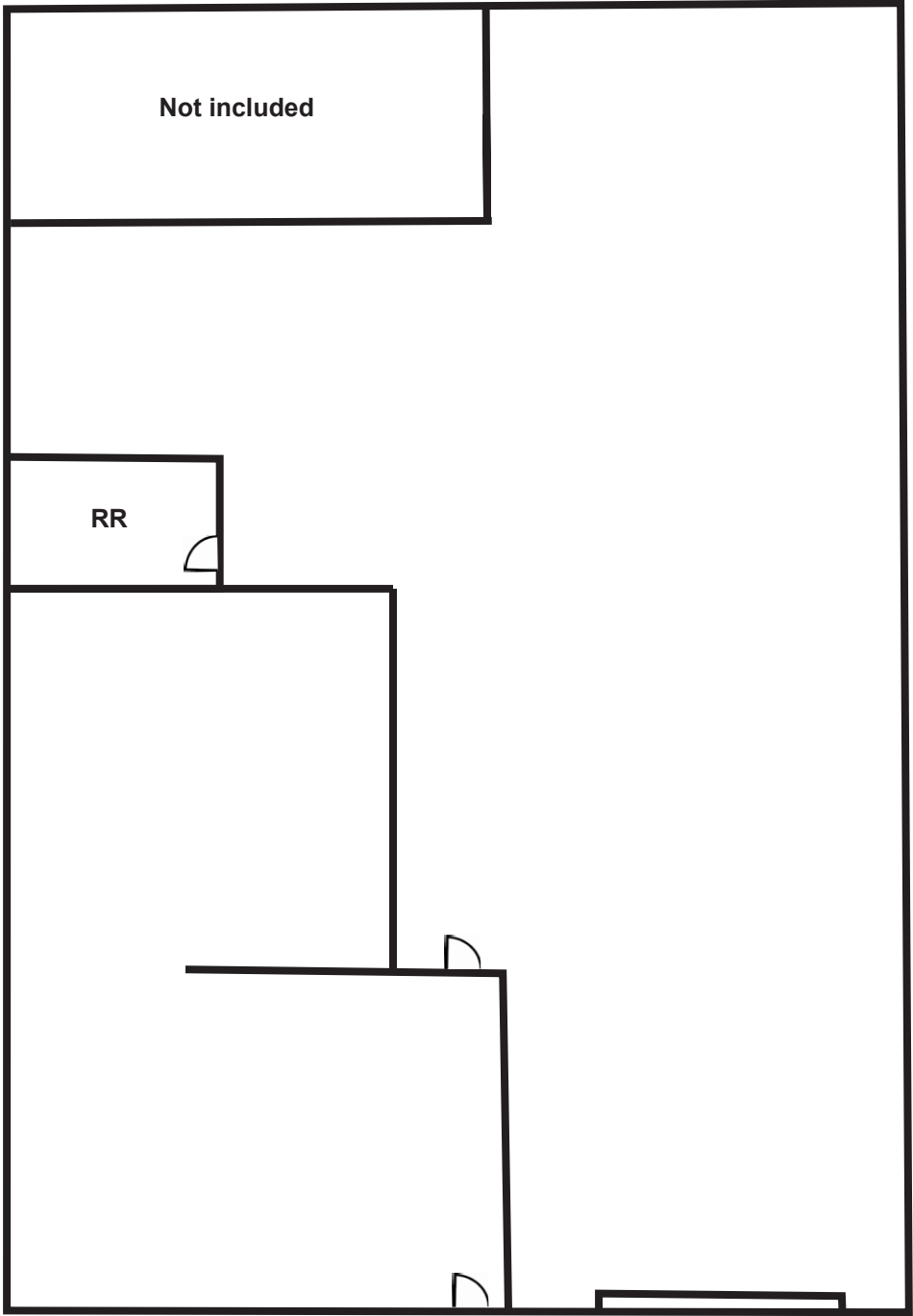


Contact

Tyler Howell
Senior Associate
+1 916 781 4835
tyler.howell1@cbre.com
Lic. 02100245

David Planting
First Vice President
+1 916 446 8204
david.planting@cbre.com
Lic. 01274102

Floor Plan - Unit 100



© 2025 CBRE, Inc. All rights reserved. This information has been obtained from sources believed reliable, but has not been verified for accuracy or completeness. You should conduct a careful, independent investigation of the property and verify all information. Any reliance on this information is solely at your own risk. CBRE and the CBRE logo are service marks of CBRE, Inc. All other marks displayed on this document are the property of their respective owners, and the use of such logos does not imply any affiliation with or endorsement of CBRE. Photos herein are the property of their respective owners. Use of these images without the express written consent of the owner is prohibited.

Floor Plan - Unit 110

