



200 Park Avenue South

Northwest Corner of East 17th Street, Union Square

Move-In Ready Upper Floor Suite | 1,939 RSF

Steps from all that Union Square's Surrounding Area Offers
Green Market, Restaurants, Retail, Citibike & other work/lifestyle benefits

Direct access to the Union Square transportation
hub's **4 5 6 L N Q R W** express/local subways
and NJ  train at 23rd Street/6th Avenue station



Northwest View

ABS Partners Real Estate, as the exclusive agent is pleased to offer the following opportunity for lease:

Suite 1218: 1,939 rsf

- Great mix of private and open workspace
- Hardwood floors throughout
- Glass-front conference room and (2) windowed offices
- Reception area, open area, wet pantry
- North and west exposure provide good natural light

Possession: Immediate

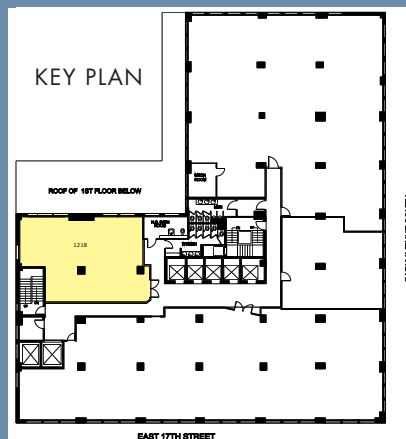
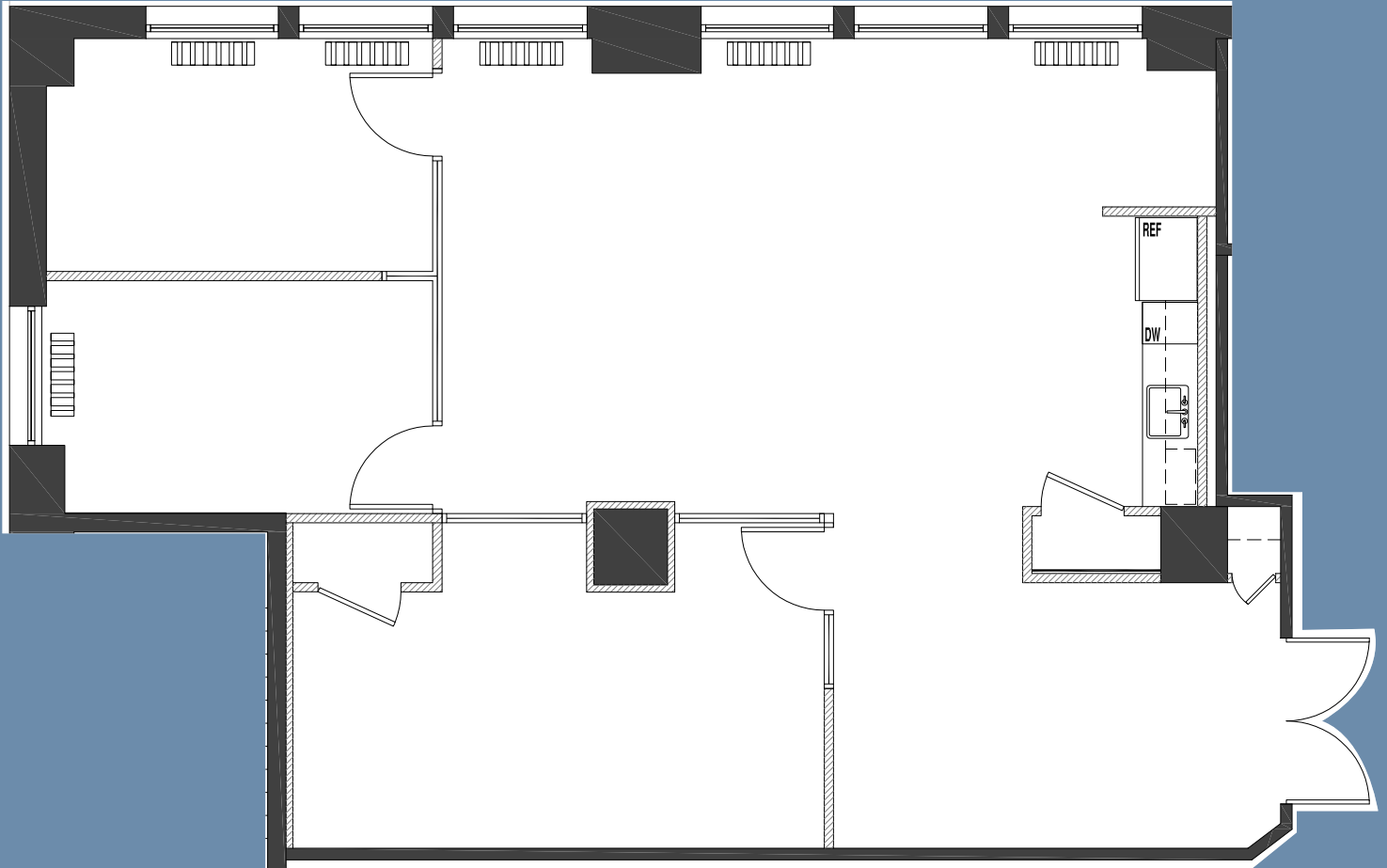
Rent: Call or email for details



- Overlooking Union Square Park offering tenants a burgeoning submarket full of creative tenancy
- 12'-2" Ceiling heights and tenant controlled air conditioning
- Card-key security system providing 24/7/365 access via attended lobby
- Direct access to the Union Square transportation hub's **4 5 6 L N Q R W** express and local subway lines, and vicinity of NJ **PATH** station at 23rd St/6th Ave, and **1 2 3 B D F M** trains along 14th St between 6th and 7th Aves
- Steps from the farmers market and Broadway's retail corridor offering a wide selection of shopping and dining options, fitness studios, and a myriad of other work/lifestyle benefits

SUITE 1218 - 1,939 RSF
(AS-BUILT)

[CLICK to View Virtual Tour](#)



(Floor plan for descriptive purposes only; not to scale.)







For further information and/or inspection, please contact:

James Caseley

Partner, Licensed Real Estate Broker
212.400.6075 | jc@absre.com

John Cinosky

Partner, Licensed Associate Real Estate Broker
212.400.2348 | jcinosky@absre.com



ABS Partners Real Estate • 200 Park Avenue South, 10th Floor, New York, NY 10003 • 212.400.6060 • www.absre.com

All information is from sources deemed reliable but is subject to errors or omissions of any magnitude, withdrawal from market, or changes in terms, all without notice. Brokers employment and payment only by written agreement.