

Office For Sublease

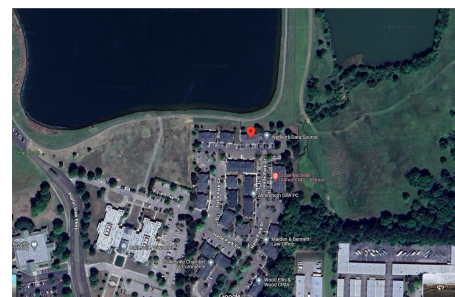
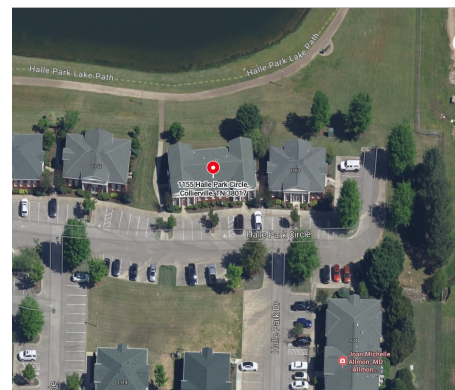
1155 Halle Park Circle
1155 Halle Park Circle
COLLIERVILLE, TN 38017



FOR SUBLEASE

Property Highlights

- Attractive office suite, approximately 3313 square feet, for sublease.
- Property located in Halle Park subdivision in Collierville, TN, near the southeast intersection of Civic Center Drive and Poplar View Parkway.
- Suite offers first class finishes throughout and includes keypad entry from lobby into office area.
- Includes reception, two conference rooms, five offices, private restrooms, kitchen with refrigerator.
- Office comes fully furnished, including large conference room table to seat 14-18, motorized drop-down screen/projector system, and more.
- Remaining sublease term expires June 30, 2026.
- Offered for lease at \$17.00/square foot, NNN.
- Operating expenses approximately \$1,429.96/month.



6525 Quail Hollow Road, Ste. 401
Memphis, TN 38120
www.crye-leike.com



CATHY ANDERSON

Broker

(901) 282-6312

cathy.anderson@crye-leike.com

PROPERTY PHOTOS

1155 Halle Park Circle
1155 Halle Park Circle | Collierville, TN 38017

02



PROPERTY PHOTOS

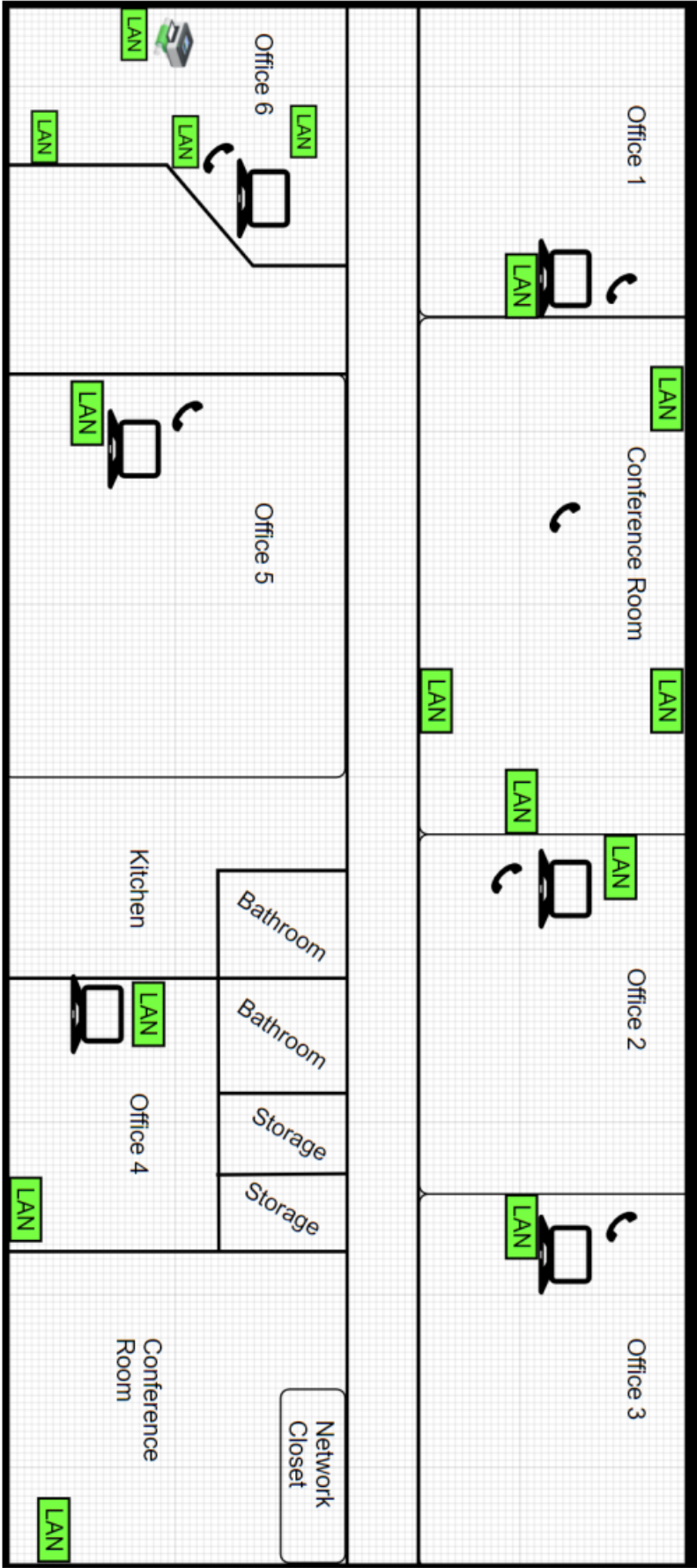
1155 Halle Park Circle
1155 Halle Park Circle | Collierville, TN 38017

03



PROPERTY PHOTOS

1155 Halle Park Circle
1155 Halle Park Circle | Collierville, TN 38017



LOCATION MAPS

1155 Halle Park Circle
1155 Halle Park Circle | Collierville, TN 38017

05

