

# 9,175 SF Office Space Available

Corporate Woods II

Corporate Woods II  
111 Corporate Office Drive  
Earth City, MO 63045

Lease Rate: \$19.00/SF, Full Service





## Office Space Available

111 Corporate Office Drive | Earth City, MO 63045

# Property Information

- + Suite 125: 9,175 SF
- + Professional management
- + Furnished with:
  - Work stations
  - Large break room
  - Conference/huddle rooms
  - Private offices
- + Large open floor plan
- + 1st floor lobby exposure
- + Excellent glass line & natural light
- + Exterior patio
- + Monument signage opportunity
- + 6+/1000 SF parking
  - Including free structured parking
- + Lease Rate: \$19.00/SF, Full Service



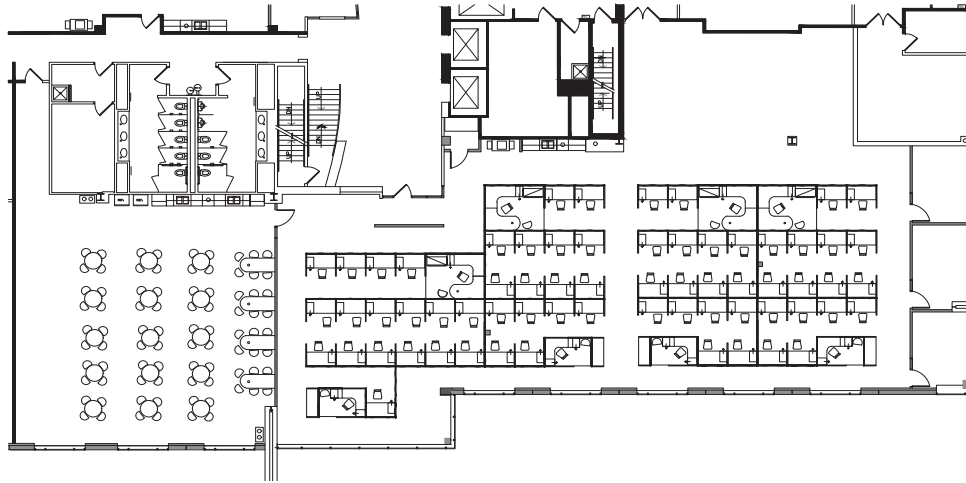


## Office Space Available

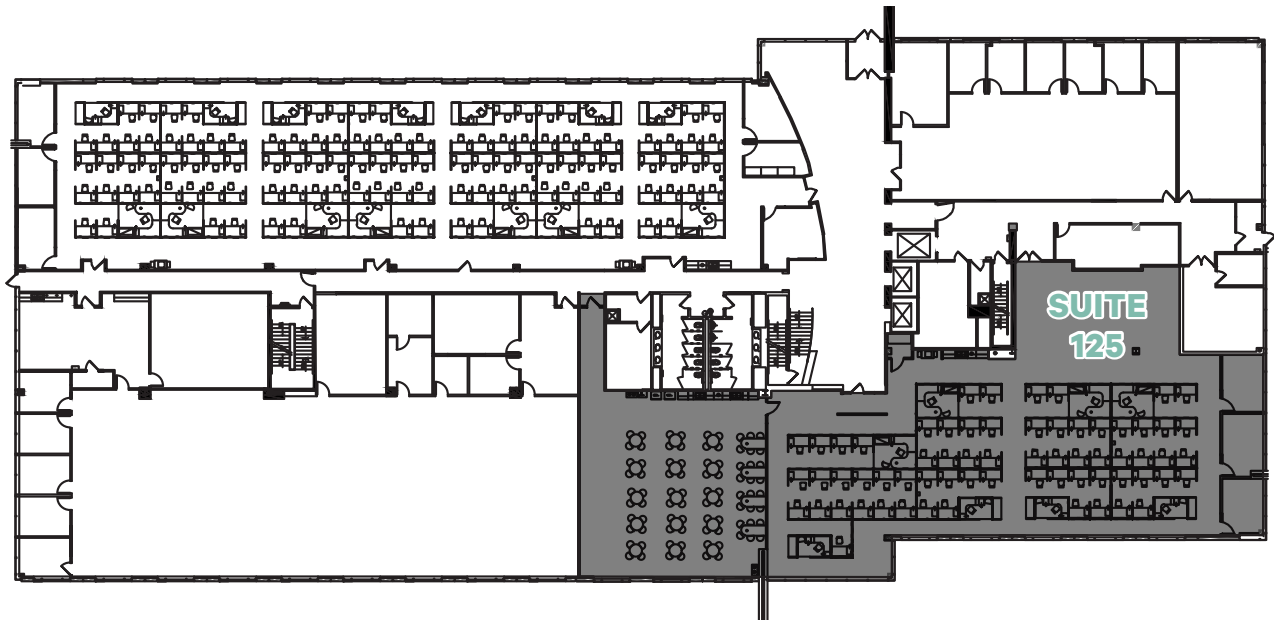
111 Corporate Office Drive | St. Louis, MO 63045

For Lease

### SUITE 125: 9,175 RSF



### 1ST FLOOR LAYOUT



## Contact Us

### Tom Ray

First Vice President  
+1 314 655 6012  
tom.ray@cbre.com

### Brian Lyss

Vice President  
+1 314 655 5805  
brian.lyss@cbre.com

© 2022 CBRE, Inc. All rights reserved. This information has been obtained from sources believed reliable, but has not been verified for accuracy or completeness. You should conduct a careful, independent investigation of the property and verify all information. Any reliance on this information is solely at your own risk. CBRE and the CBRE logo are service marks of CBRE, Inc. All other marks displayed on this document are the property of their respective owners, and the use of such logos does not imply any affiliation with or endorsement of CBRE. Photos herein are the property of their respective owners. Use of these images without the express written consent of the owner is prohibited.