

5240 Panola Industrial Blvd Suite N

DECATUR, GEORGIA 30035

63,410 sq. ft.
TOTAL BUILDING

12,603 sq. ft.
AVAILABLE

6
DOCK HIGH DOORS

22'
CLEAR HEIGHT

Features

12,603 sq. ft. (divisible)
warehouse space.

1,755 sq. ft. office space.

6 dock doors.

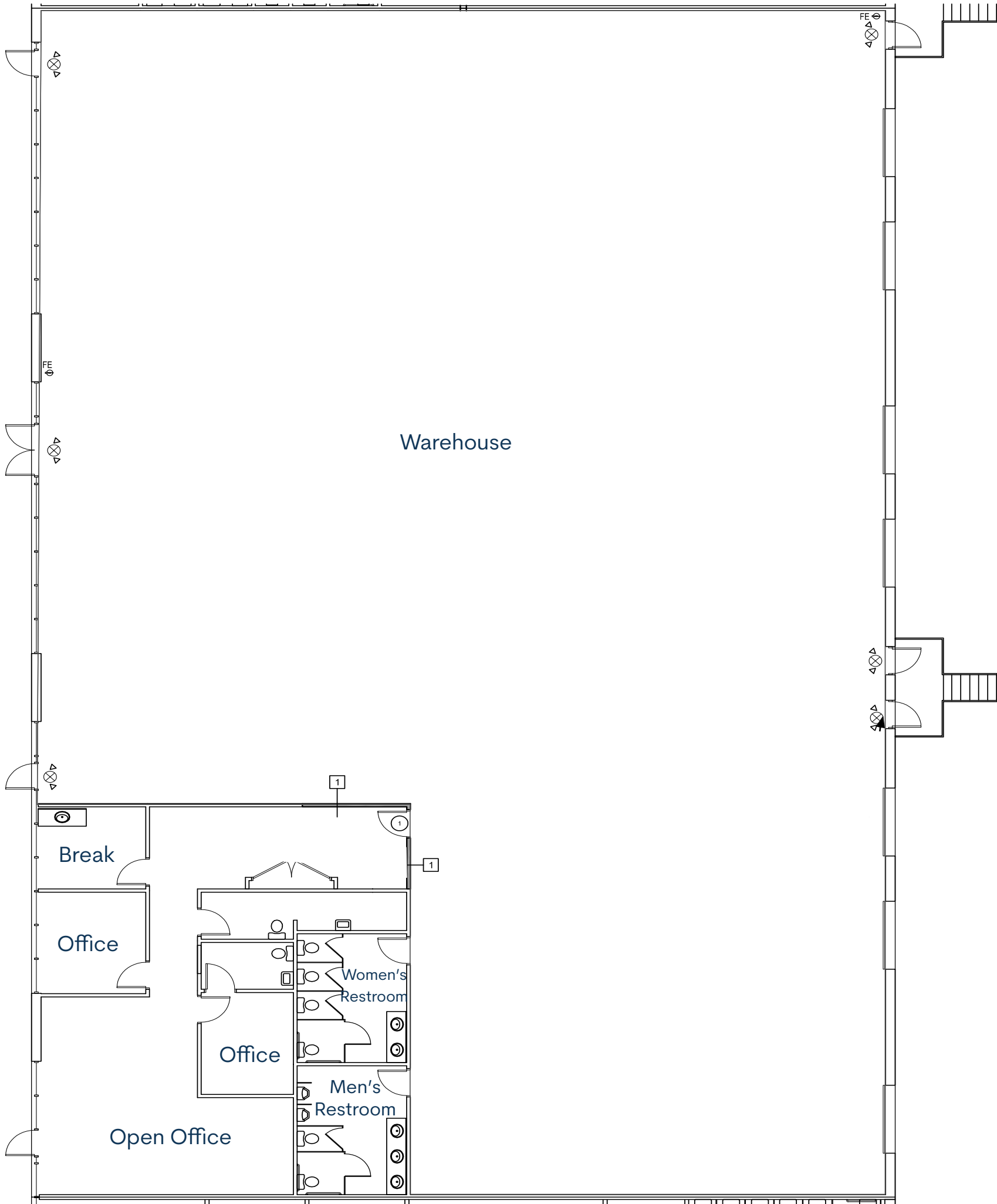
7.8/1,000 ratio of auto parking
spaces.

0.2 miles from Panola Road exit
off I-20.



Building Specifications

Building Size	63,410 sq. ft.
Available	12,603 sq. ft.
Office Size	1,755 sq. ft.
Clear Height	22'
Truck Court Depth	91'-8"
Dock Doors	6 doors
Configuration	Rear load
Automobile Parking	7.8/1,000
Sprinklers	Wet
Lighting	Lighting to be upgraded to LED
Power	200 Amps, 120/208v 3-phase





7.8/1,000

Automobile
Parking



22'

Clear
Height



4

Dock Doors



91'-8"

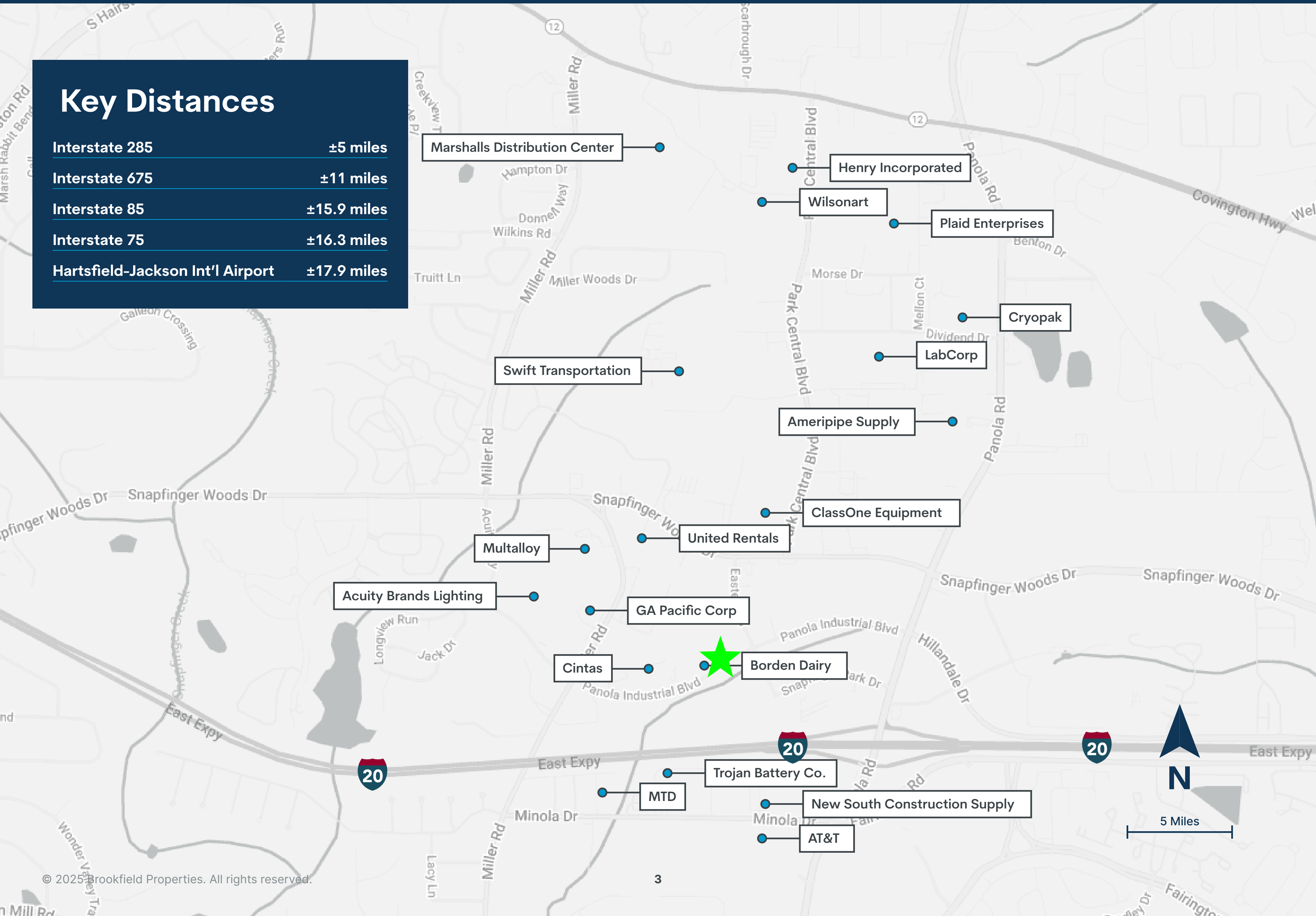
Truck Court
Depth





Key Distances

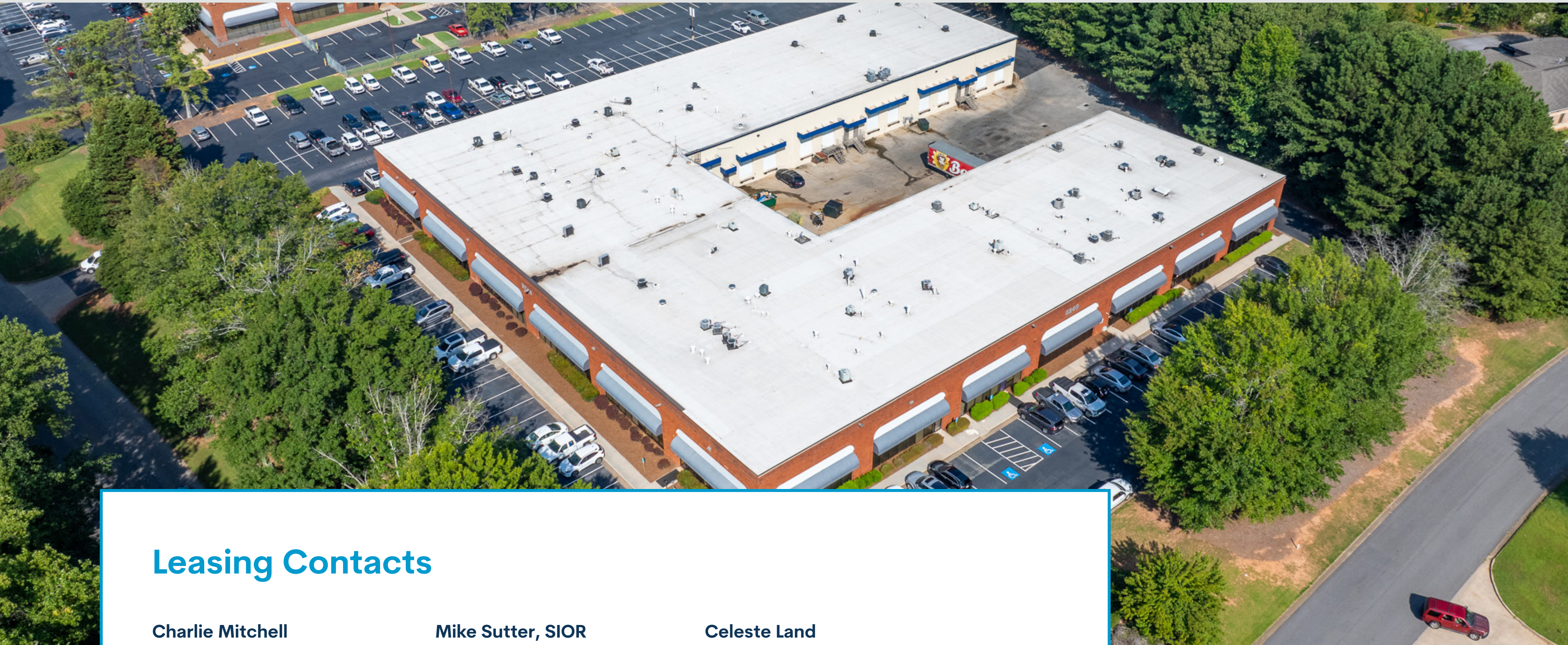
Interstate 285	±5 miles
Interstate 675	±11 miles
Interstate 85	±15.9 miles
Interstate 75	±16.3 miles
Hartsfield-Jackson Int'l Airport	±17.9 miles





5240 Panola Industrial Blvd

DECATUR, GA 30035



Leasing Contacts

Charlie Mitchell

C 404.987.1077

O 404.781.2123

cmitchell@lee-associates.com

Mike Sutter, SIOR

C 404.668.1473

O 404.442.2804

msutter@lee-associates.com

Celeste Land

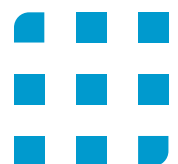
404.418.4168

celeste.land@brookfieldproperties.com

Brookfieldproperties.com



Brookfield Properties



All information regarding property for sale, rental or financing is from sources deemed reliable, but no warranty or representation is made to the accuracy thereof and same is submitted to errors, omissions, change of price, rental or other conditions prior to sale, lease or financing or withdrawal without notice. No liability of any kind is to be imposed on the broker herein.