



**REDUCED  
PRICE**

## 990 N. 4th Street Tomahawk, WI 54487

### Property Features

- Prime access on N. 4th Street
- Major commercial/retail thoroughfare of community
- Steel building structure
- Usable for many applications
- Loading dock
- Over 10K cars per day
- 20' center 10' sides

### Details

Current grocery operation could be continued or location would make great retail/flex space for a variety of businesses.

**PRICE - REDUCED**     ~~\$1,200,000~~ ~~\$999,000~~ **\$965,000**

**LEASE RATE**     **\$6.00/SF NNN**

BUILDING SIZE     22,316 SF

REAR MEZZANINE/OFFICE SPACE     900 SF

ACRES     3.19

ZONING     B-1 BUSINESS

PARKING     50+ PAVED

PARCEL #     286-3506-271-0153

For more information:

Tony "T.J." Morice, SIOR ([About SIOR](#))

715.218.2900 • [tjm@naipfefferle.com](mailto:tjm@naipfefferle.com)

NO WARRANTY OR REPRESENTATION, EXPRESS OR IMPLIED, IS MADE AS TO THE ACCURACY OF THE INFORMATION CONTAINED HEREIN, AND THE SAME IS SUBMITTED SUBJECT TO ERRORS, OMISSIONS, CHANGE OF PRICE, RENTAL OR OTHER CONDITIONS, PRIOR SALE, LEASE OR FINANCING, OR WITHDRAWAL WITHOUT NOTICE, AND OF ANY SPECIAL LISTING CONDITIONS IMPOSED BY OUR PRINCIPALS NO WARRANTIES OR REPRESENTATIONS ARE MADE AS TO THE CONDITION OF THE PROPERTY OR ANY HAZARDS CONTAINED THEREIN ARE ANY TO BE IMPLIED.

327 N. 17th Avenue, Suite 303  
Wausau, WI 54401  
715.261.2922  
[naipfefferle.com](http://naipfefferle.com)

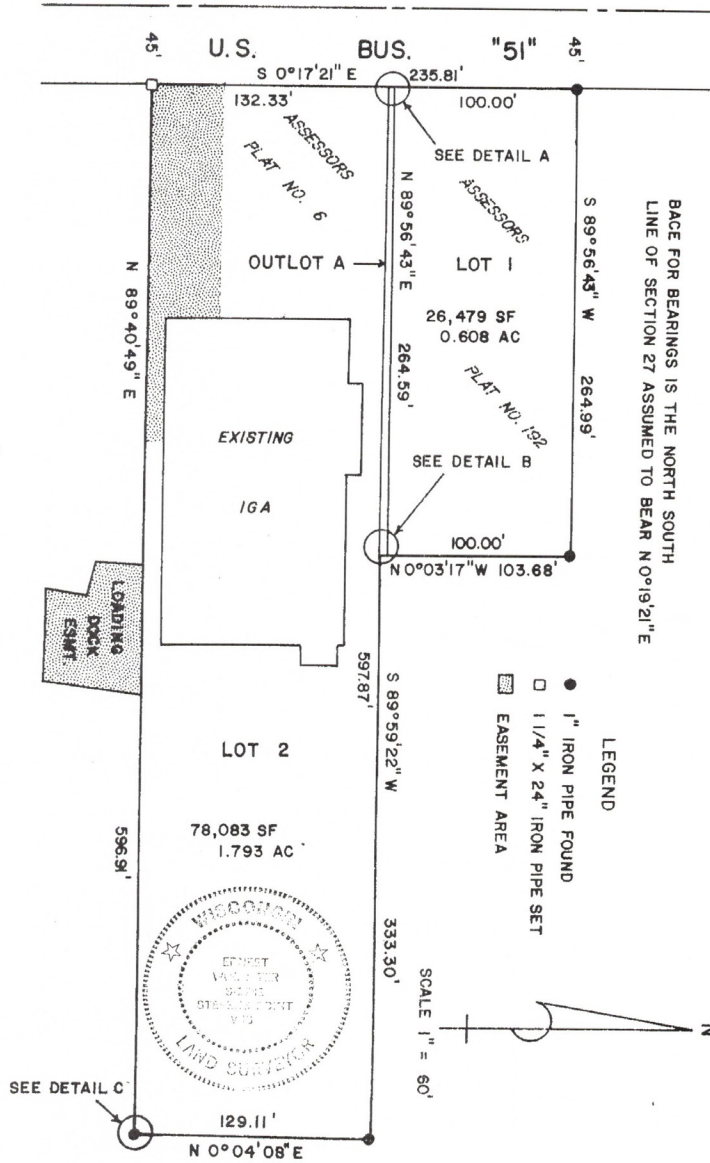


C.S.M. # 606

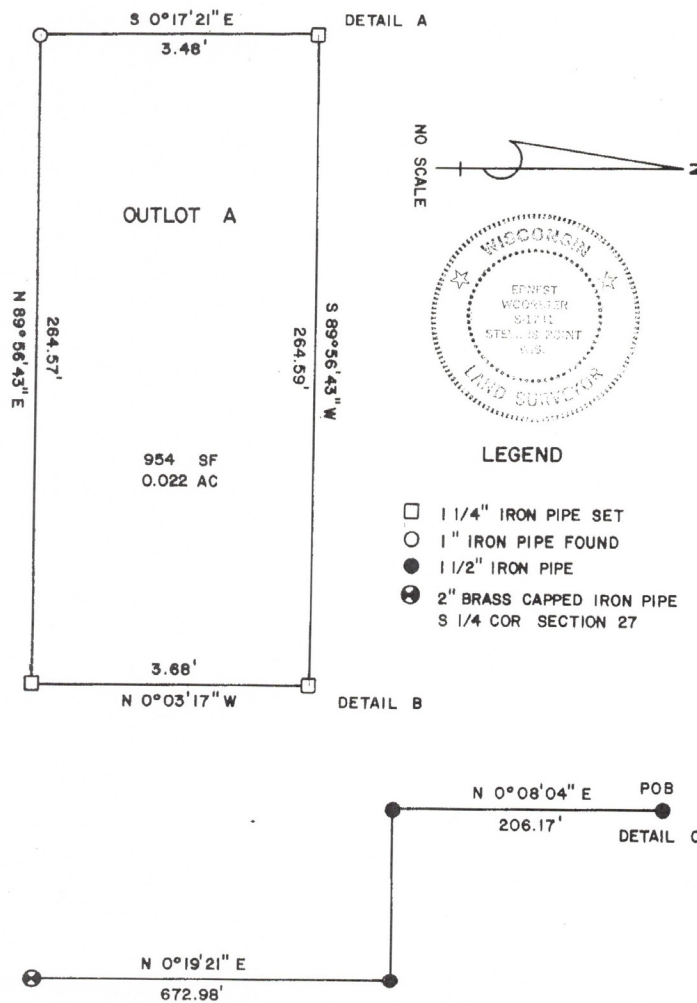
311948

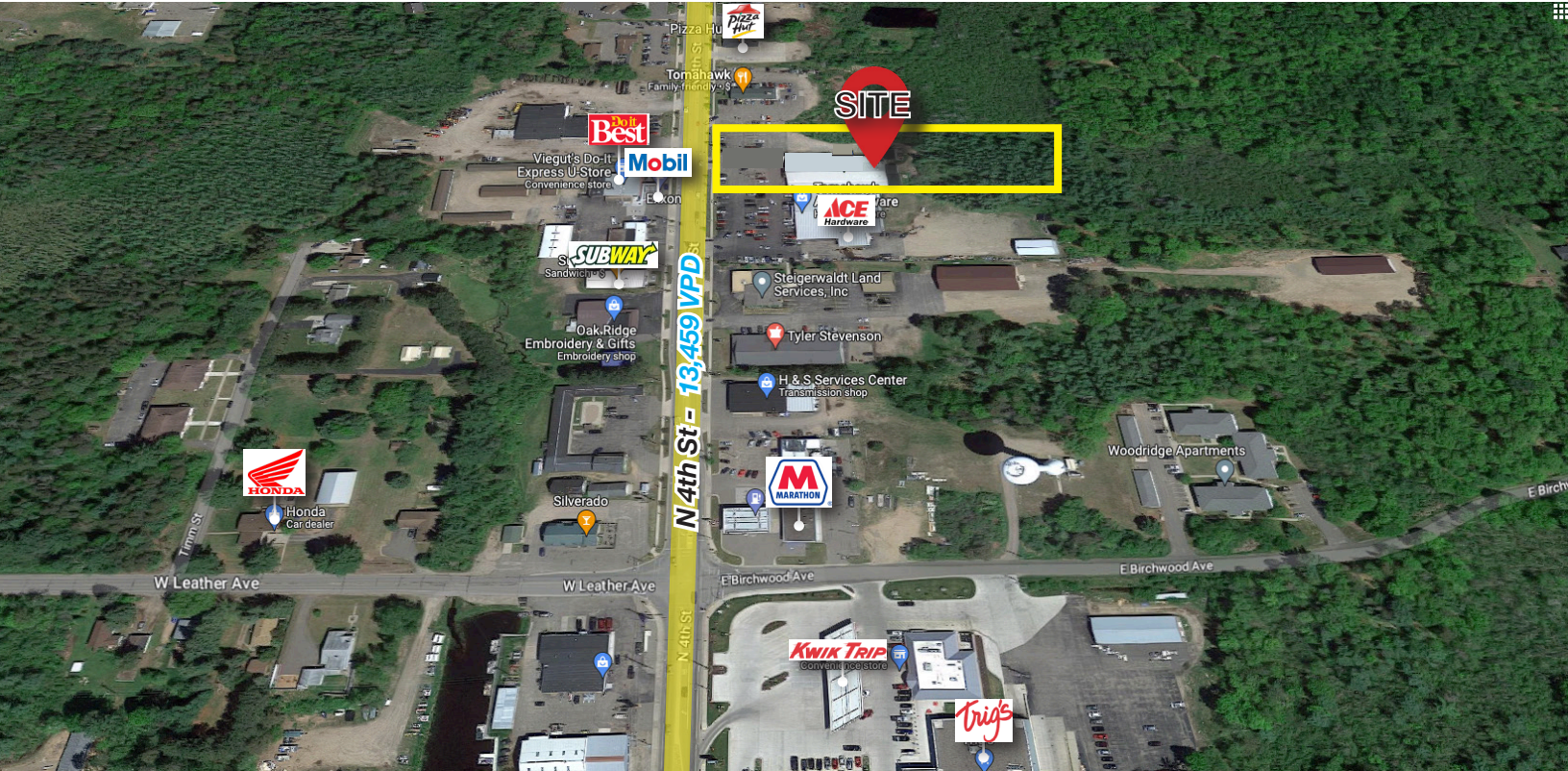
LINCOLN COUNTY, WIS.

Received for record the 18<sup>th</sup>  
day of Feb. A.D. 19 91  
8:15 o'clock A.M. and Recorded in  
Vol. 3 of records on page 99  
Glenn Callahan  
REGISTER OF DEEDS



CERTIFIED SURVEY MAP FOR COPPS CORPORATION BEING A PART OF ASSESSORS PLAT NUMBER 7 AND 192 LOCATED IN THE SE 1/4 OF THE SW 1/4 OF SECTION 27, TOWNSHIP 35 NORTH, RANGE 6 EAST, CITY OF TOMAHAWK, LINCOLN COUNTY, WISCONSIN.





## Demographics (3, 5 & 10 Mile Radius)

POPULATION		EMPLOYEES				
	3 MILES:	4,249		3 MILES:	3,296	
	5 MILES:	6,751		5 MILES:	3,373	
	10 MILES:	11,086		10 MILES:	3,796	
AVERAGE INCOME		BUSINESSES				
	3 MILES:	\$85,714		3 MILES:	269	
	5 MILES:	\$91,330		5 MILES:	286	
	10 MILES:	\$92,263		10 MILES:	342	
AVERAGE HOUSEHOLDS		TRAFFIC COUNTS				
	3 MILES:	2,012		N 4TH STREET		13,459
	5 MILES:	3,213				
	10 MILES:	5,249				

## STATE OF WISCONSIN BROKER DISCLOSURE



Wisconsin law requires all real estate licensees to give the following information about brokerage services to prospective customers.

**Prior to negotiating on your behalf the Brokerage firm, or an agent associated with the firm, must provide you the following disclosure statement.**

### Disclosure to Customers

You are a customer of NAI Pfefferle (hereinafter Firm). The Firm is either an agent of another party in the transaction or a subagent of another firm that is the agent of another party in the transaction. A broker or a salesperson acting on behalf of the Firm may provide brokerage services to you. Whenever the Firm is providing brokerage services to you, the Firm and its brokers and salespersons (hereinafter Agents) owe you, the customer, the following duties:

- The duty to provide brokerage services to you fairly and honestly.
- The duty to exercise reasonable skill and care in providing brokerage services to you.
- The duty to provide you with accurate information about market conditions within a reasonable time if you request it, unless disclosure of the information is prohibited by law.
- The duty to disclose to you in writing certain Material Adverse Facts about a Property, unless disclosure of the information is prohibited by law.
- The duty to protect your confidentiality. Unless the law requires it, the Firm and its Agents will not disclose your confidential information or the confidential information of other parties.
- The duty to safeguard trust funds and other property held by the Firm or its Agents.
- The duty, when negotiating, to present contract proposals in an objective and unbiased manner and disclose the advantages and disadvantages of the proposals.

Please review this information carefully. An Agent of the Firm can answer your questions about brokerage services, but if you need legal advice, tax advice, or a professional home inspection, contact an attorney, tax advisor, or home inspector. This disclosure is required by section 452.135 of the Wisconsin statutes and is for information only. It is a plain-language summary of the duties owed to a customer under section 452.133(1) of the Wisconsin statutes.

### Confidentiality Notice to Customers

The Firm and its Agents will keep confidential any information given to the Firm or its Agents in confidence, or any information obtained by the Firm or its Agents that a reasonable person would want to be kept confidential, unless the information must be disclosed by law or you authorize the Firm to disclose particular information. The Firm and its Agents shall continue to keep the information confidential after the Firm is no longer providing brokerage services to you.

*No representation is made as to the legal validity of any provision or the adequacy of any provision in any specific transaction.*

The following information is required to be disclosed by law:

1. Material Adverse Facts, as defined in section 452.01(5g) of the Wisconsin Statutes (see definition below).
2. Any facts known by the Firm or its Agents that contradict any information included in a written inspection report on the property or real estate that is the subject of the transaction.

To ensure that the Firm and its Agents are aware of what specific information you consider confidential, you may list that information below or provide that information to the Firm or its Agents by other means. At a later time, you may also provide the Firm or its Agents with other information you consider to be confidential.

### CONFIDENTIAL INFORMATION

---

---

### NON-CONFIDENTIAL INFORMATION

(the following information may be disclosed to the Firm and its Agents)

---

---

(Insert information you authorize to be disclosed, such as financial qualification information.)

### Definition of Material Adverse Facts

A “Material Adverse Fact” is defined in Wis. Stat. 452.01(5g) as an Adverse Fact that a party indicates is of such significance, or that is generally recognized by a competent licensee as being of such significance to a reasonable party, that it affects or would affect the party’s decision to enter into a contract or agreement concerning a transaction or affects or would affect the party’s decision about the terms of such a contract or agreement.

An “Adverse Fact” is defined in Wis. Stat. 452.01(1e) as a condition or occurrence that a competent licensee generally recognizes will significantly and adversely affect the value of the property, significantly reduce the structural integrity of improvements to real estate, or present a significant health risk to occupants of the property; or information that indicates that a party to a transaction is not able to or does not intend to meet his or her obligations under a contract or agreement made concerning the transaction.

### Notice About Sex Offender Registry

You may obtain information about the sex offender registry and persons registered with the registry by contacting the Wisconsin Department of Corrections on the Internet at <http://www.doc.wi.gov> or by telephone at 608-240-5830.