

OFFICE SPACE FOR LEASE - 18,000 SF
POLYGON PLAZA
2050 CENTER AVENUE, FORT LEE, NJ 07024



GREAT LOCATION & VALUE THAT WILL GET YOU MOVING...

This beautiful appointed building boasts immediate access to the NJ Turnpike and is located 0.6 miles from the George Washington Bridge. The building provides great amenities / special features in addition to on-site owner/ management and full-time superintendent. You won't find a better managed building in Bergen County.

The available 18,000 SF office space on the second floor offers an open floor plan with natural lighting through perimeter windows. This unit provides large conference rooms, kitchen, bathrooms, fitness room and storage room. Available immediately.

FOR MORE INFORMATION CONTACT EXCLUSIVE BROKERS:

Joe Tormen
C 201.390.7207
joe.tormen@lee-associates.com

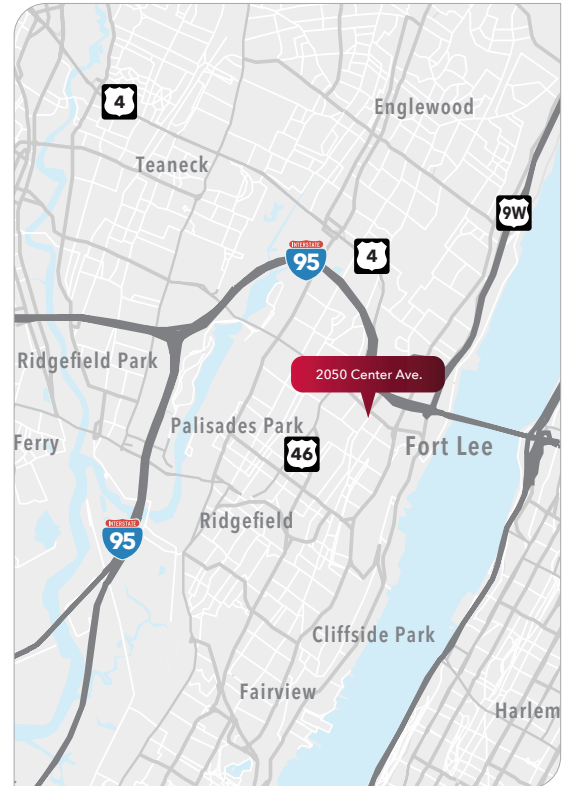
All information furnished regarding property for sale, rental or financing is from sources deemed reliable, but no warranty or representation is made to the accuracy thereof and same is submitted to errors, omissions, change of price, rental or other conditions prior to sale, lease or financing or withdrawal without notice. Buyer acknowledges that Lee & Associates of New Jersey, LLC ("Broker") has not verified the information contained herein and does not make any representation about its accuracy. Buyer should confirm information contained in the Offering using its own sources. No liability of any kind is to be imposed on Broker herein.

OFFICE SPACE FOR LEASE - 18,000 SF POLYGON PLAZA

2050 CENTER AVENUE, FORT LEE, NJ 07024

LISTING INFORMATION

- AVAILABLE SF:** 2nd Floor: 18,000 SF (divisible to 1,600SF)
3rd Floor: 2,100 SF (Suite 375)
5th Floor: 1,210 SF (Suite 510)
6th Floor: 970 SF (Suite 610)
- ON-SITE:** On-Site Manager, Full-Time Superintendent,
Full-Time Porter
- RENTAL RATE:** \$27.00 plus TE
- CLIMATE:** Floor by floor controlled HVAC, baseboard
perimeter heat
- PARKING:** 3/1,000 Covered spaces
- COMMUNICATION & ELECTRICAL:** Time Warner, Verizon FIOS
- SECURITY:** Closed circuit monitored lobby, card access
for after-hour entry
- LOCATION:** Direct access to NJ Transit buses, 171,
175,178 and 186
- CORPORATE NEIGHBORS:** Merrill Lynch, Regus, Palisade Capital
and KBIC



FOR MORE INFORMATION CONTACT EXCLUSIVE BROKERS:

Joe Tormen
C 201.390.7207
joe.tormen@lee-associates.com

All information furnished regarding property for sale, rental or financing is from sources deemed reliable, but no warranty or representation is made to the accuracy thereof and same is submitted to errors, omissions, change of price, rental or other conditions prior to sale, lease or financing or withdrawal without notice. Buyer acknowledges that Lee & Associates of New Jersey, LLC ("Broker") has not verified the information contained herein and does not make any representation about its accuracy. Buyer should confirm information contained in the Offering using its own sources. No liability of any kind is to be imposed on Broker herein.

OFFICE SPACE FOR LEASE - 18,000 SF
POLYGON PLAZA
2050 CENTER AVENUE, FORT LEE, NJ 07024

INTERIOR PHOTOS



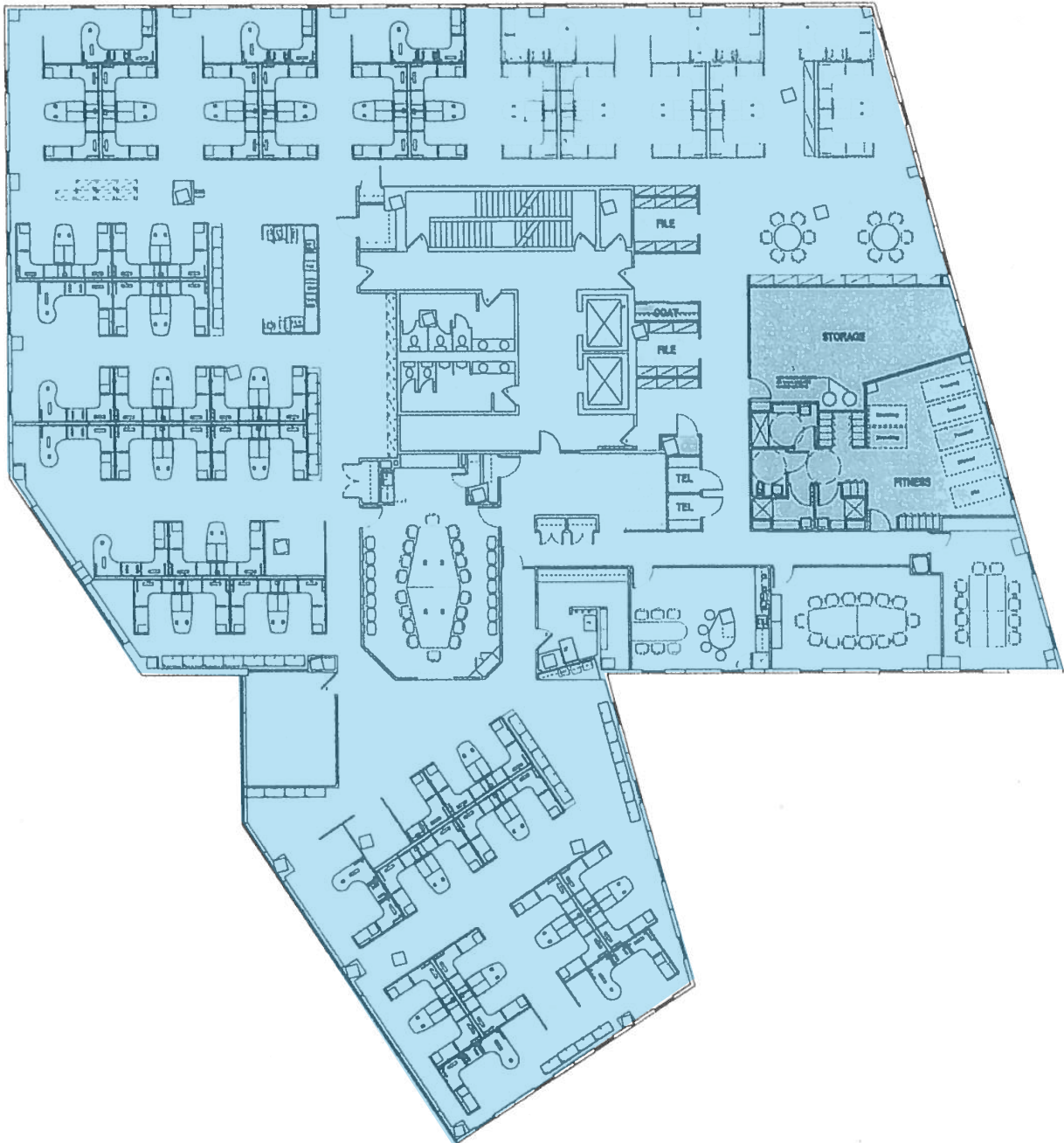
FOR MORE INFORMATION CONTACT EXCLUSIVE BROKERS:

Joe Tormen
C 201.390.7207
joe.tormen@lee-associates.com

All information furnished regarding property for sale, rental or financing is from sources deemed reliable, but no warranty or representation is made to the accuracy thereof and same is submitted to errors, omissions, change of price, rental or other conditions prior to sale, lease or financing or withdrawal without notice. Buyer acknowledges that Lee & Associates of New Jersey, LLC ("Broker") has not verified the information contained herein and does not make any representation about its accuracy. Buyer should confirm information contained in the Offering using its own sources. No liability of any kind is to be imposed on Broker herein.

OFFICE SPACE FOR LEASE - 18,000 SF
POLYGON PLAZA
2050 CENTER AVENUE, FORT LEE, NJ 07024

2ND FLOOR PLAN - 18,000 SF AVAILABLE - DIVISIBLE TO 1,600 SF

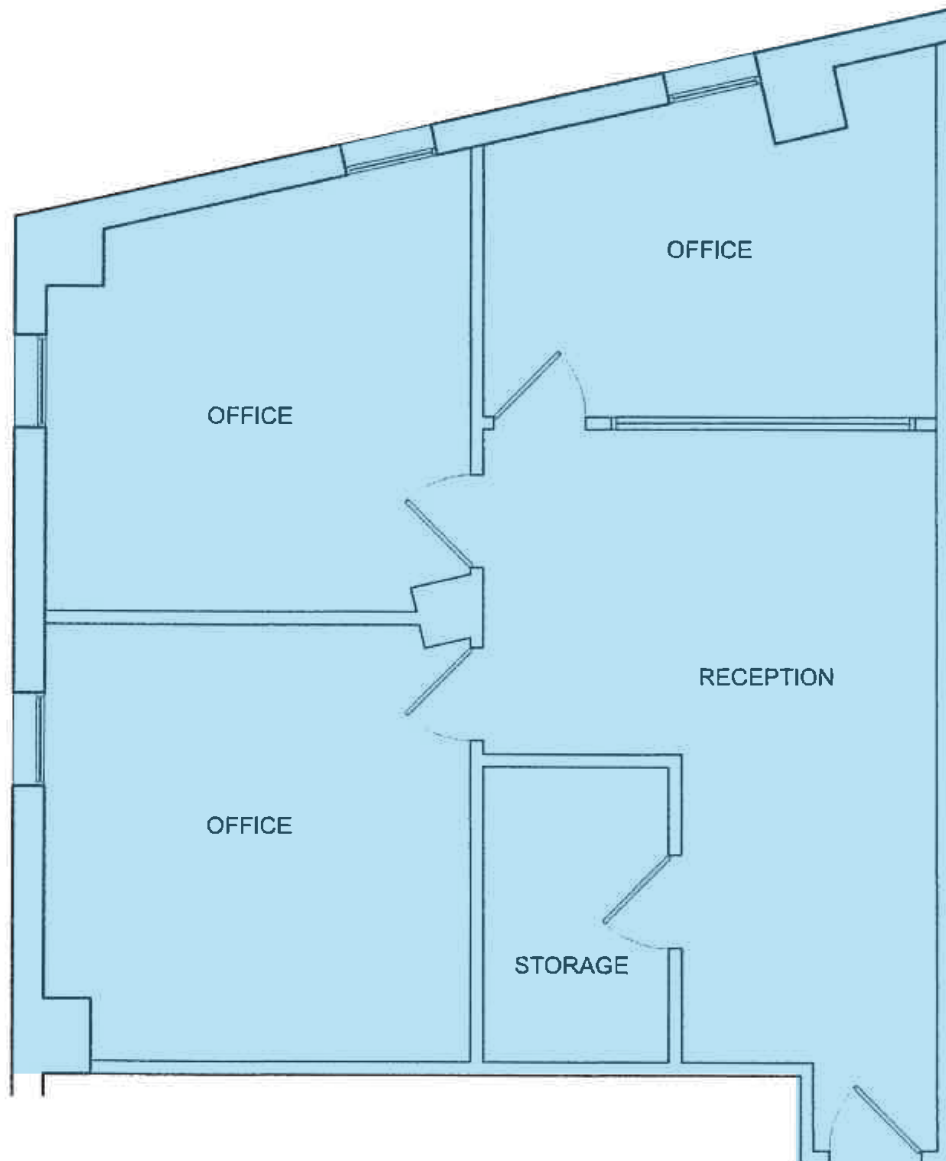


FOR MORE INFORMATION CONTACT EXCLUSIVE BROKERS:

Joe Tormen
C 201.390.7207
joe.tormen@lee-associates.com

All information furnished regarding property for sale, rental or financing is from sources deemed reliable, but no warranty or representation is made to the accuracy thereof and same is submitted to errors, omissions, change of price, rental or other conditions prior to sale, lease or financing or withdrawal without notice. Buyer acknowledges that Lee & Associates of New Jersey, LLC ("Broker") has not verified the information contained herein and does not make any representation about its accuracy. Buyer should confirm information contained in the Offering using its own sources. No liability of any kind is to be imposed on Broker herein.

5TH FLOOR PLAN SUITE 510 - 1,210 SF AVAILABLE

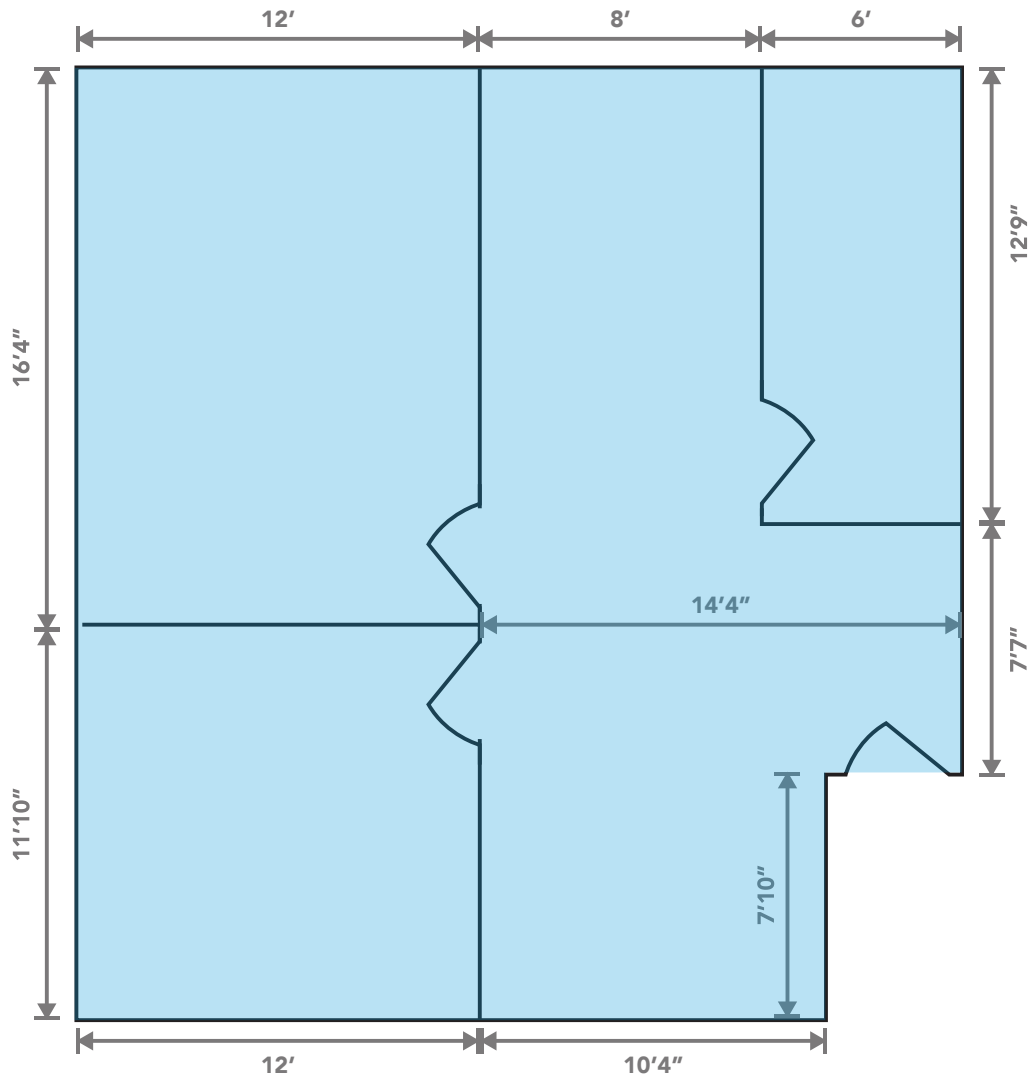


FOR MORE INFORMATION CONTACT EXCLUSIVE BROKERS:

Joe Tormen
C 201.390.7207
joe.tormen@lee-associates.com

All information furnished regarding property for sale, rental or financing is from sources deemed reliable, but no warranty or representation is made to the accuracy thereof and same is submitted to errors, omissions, change of price, rental or other conditions prior to sale, lease or financing or withdrawal without notice. Buyer acknowledges that Lee & Associates of New Jersey, LLC ("Broker") has not verified the information contained herein and does not make any representation about its accuracy. Buyer should confirm information contained in the Offering using its own sources. No liability of any kind is to be imposed on Broker herein.

6TH FLOOR PLAN SUITE 610 - 970 SF AVAILABLE



FOR MORE INFORMATION CONTACT EXCLUSIVE BROKERS:

Joe Tormen
C 201.390.7207
joe.tormen@lee-associates.com

All information furnished regarding property for sale, rental or financing is from sources deemed reliable, but no warranty or representation is made to the accuracy thereof and same is submitted to errors, omissions, change of price, rental or other conditions prior to sale, lease or financing or withdrawal without notice. Buyer acknowledges that Lee & Associates of New Jersey, LLC ("Broker") has not verified the information contained herein and does not make any representation about its accuracy. Buyer should confirm information contained in the Offering using its own sources. No liability of any kind is to be imposed on Broker herein.